

GRANT COUNTY U.S. PUBLIC LAND SURVEY MONUMENT RECORD

(A) IDENTIFY THE CORNER AS REFERENCED TO THE U.S. PUBLIC LAND SURVEY SYSTEM

● = CORNER MONUMENT RESTORED

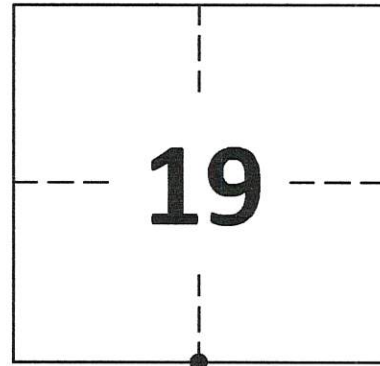
WITNESSES TO CORNER LOCATION:

DAN PETTIS
CALEB KOLANDER

GEOGRAPHIC COORDINATES
NAD 83 (2011) ADJUSTMENT

LATITUDE: 42°47'57.9079"
LONGITUDE: -90°46'17.9293"

WISCONSIN STATE PLANE SOUTH ZONE (US SF):
NORTHING: 292,323.943
EASTING: 1,761,402.553



SECTION 19
TOWNSHIP 4 NORTH, RANGE 3 WEST
TOWN OF SOUTH LANCASTER

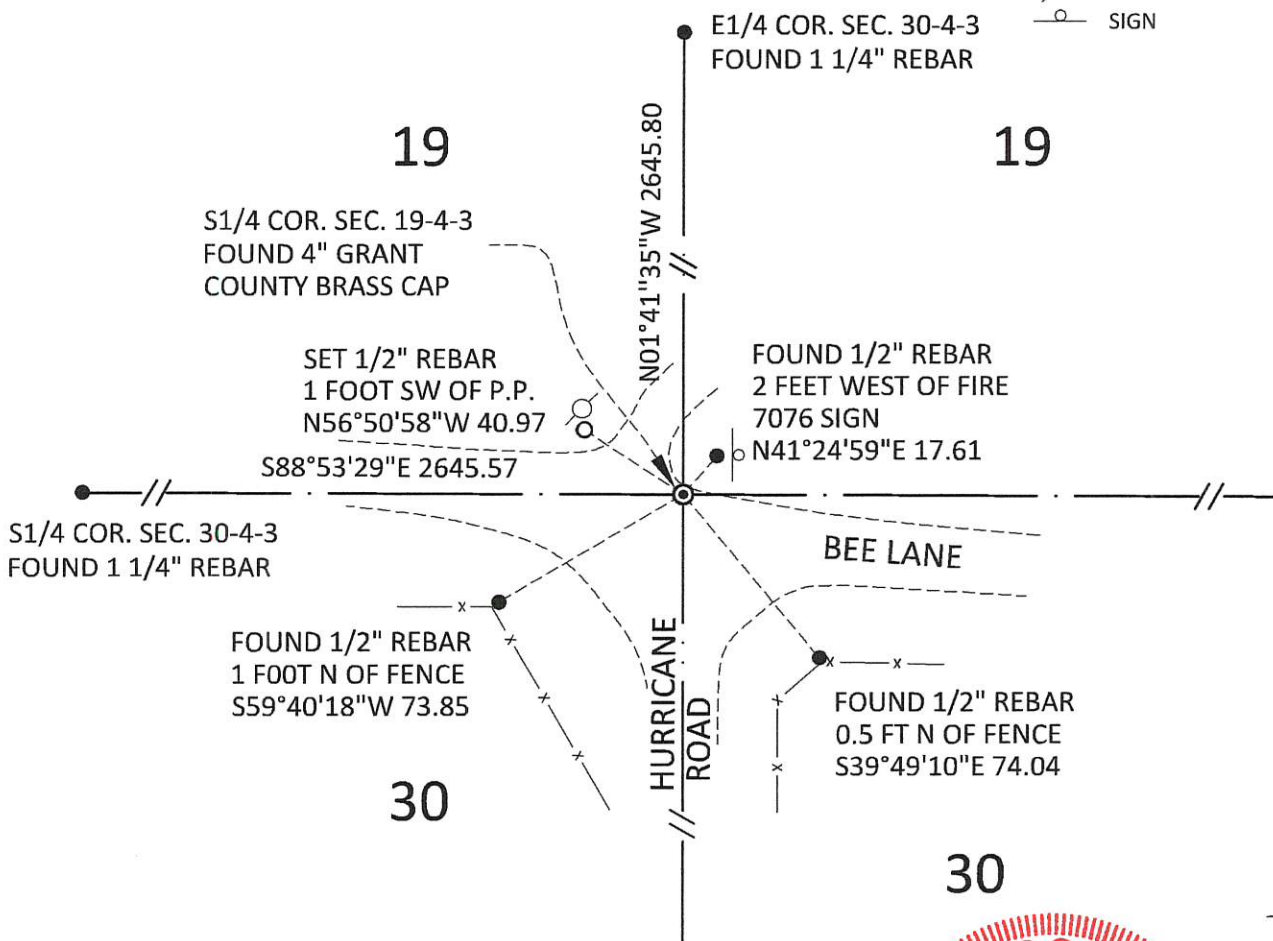
(B) DESCRIBE ANY RECORD EVIDENCE, MONUMENT EVIDENCE, OCCUPATIONAL EVIDENCE, TESTIMONIAL EVIDENCE OR ANY OTHER MATERIAL EVIDENCE YOU CONSIDERED, AND WHETHER THE MONUMENT WAS FOUND OR PLACED.

FOUND GRANT COUNTY BRASS MONUMENT SET JAY P. ADAMS IN 2018

(C) IN THE PLAN VIEW DRAWING BELOW, PROVIDE REFERENCE TIES TO AT LEAST 4 WITNESS MONUMENTS. WITNESS MONUMENTS SHALL BE MADE OF CONCRETE, NATURAL STONE, IRON, BEARING TREES OR ANY OTHER EQUALLY DURABLE MATERIAL. DEPICT THE RELEVANT MONUMENTS AND REFERENCE TIES WITH SUFFICIENT DETAIL TO ENABLE ACCURATE RELOCATION OF THE CORNER IF THE CORNER MONUMENT IS DISTURBED.

(D) LEGEND

- x — x — x — x — BARBED WIRE FENCE
- ⊙ POWER POLE
- SIGN



**GRANT COUNTY
U.S. PUBLIC LAND SURVEY MONUMENT RECORD**

(E) DESCRIBE ANY MATERIAL DISCREPANCY BETWEEN THE LOCATION OF THE CORNER AS RESTORED OR REESTABLISHED AND THE LOCATION OF THAT CORNER AS PREVIOUSLY RESTORED OR REESTABLISHED BY DISTANCE AND DIRECTION. SHOW THE DISCREPANCY ON THE PLAN VIEW DRAWING UNDER (D), ABOVE. SHOW THE DISTANCES BETWEEN THE CORNER AS PREVIOUSLY RESTORED OR REESTABLISHED AND (1) THE CORNER AS RESTORED OR REESTABLISHED, AND (2) TO AT LEAST 2 OF THE WITNESS MONUMENTS SHOWN ON THE DRAWING IN (D) ABOVE.

N/A

(F) WAS THE CORNER RESTORED THROUGH ACCEPTANCE OF (1) AN OBLITERATED EVIDENCE LOCATION, OR (2) A FOUND PERPETUATED LOCATION?

FOUND AT PERPETUATED LOCATION

(G&H) WAS THE CORNER REESTABLISHED THROUGH LOST CORNER PROPORTIONATE METHODS? IF SO, SHOW THE METHOD, INCLUDING THE DIRECTIONS AND DISTANCES TO OTHER PUBLIC LAND SURVEY CORNERS USED AS EVIDENCE OR USED FOR PROPORTIONING IN DETERMINING THE CORNER LOCATION.

N/A

1. CORNER HISTORY: ORIGINAL CORNER SET IN 1833 BY ROBERT CLARK JR.
2. IN 1840, BOOK A, PAGE 31, FREEMAN FOUND THE ORIGINAL CORNER.
3. IN 1844, BOOK A, PAGES 165 AND 198, WILTSE FOUND THE ORIGINAL CORNER.
4. IN 1848, GEORGE R. STINTZ FOUND THE ORIGINAL CORNER.
5. IN 2004, BOOK 16, PAGE 16, LARRY L. AUSTIN SET AN 1" X 30" REBAR WITH GRANT COUNTY ALUMINUM CAP AT A PROPORTIONATE MEASUREMENT BETWEEN THE SW AND SE CORNERS OF SECTION 19 ON A PLAT OF SURVEY AND RECORDED A U.S. PUBLIC LAND SURVEY MONUMENT RECORD.
6. IN 2007, BOOK 22, PAGE 19, LARRY L. AUSTIN FOUND A GRANT COUNTY ALUMINUM CAP ON A PLAT OF SURVEY.
7. IN 2008, BOOK 24, PAGE 26, LARRY L. AUSTIN FOUND A GRANT COUNTY ALUMINUM CAP ON A PLAT OF SURVEY.
8. IN 2013, BOOK 34, PAGE 68, AARON J. AUSTIN FOUND A GRANT COUNTY ALUMINUM CAP ON A PLAT OF SURVEY.
9. IN 2018, JAY P. ADAMS FOUND THE 1" REBAR SET BY LARRY L. AUSTIN IN 2004 AND REPLACED IT WITH A 2" X 30" STAINLESS STEEL PIPE WITH A 4" GRANT COUNTY BRASS CAP AND RECORDED A U.S. PUBLIC LAND SURVEY MONUMENT RECORD.
10. IN 2020 GREGG STROEING FOUND THE 4" BRASS CAP AND ACCEPTED THIS POSITION AS THE PERPETUATED GRANT COUNTY MONUMENT SET BY LARRY L. AUSTIN IN 2004 AND RE-CERTIFIED BY JAY P. ADAMS IN 2018. UPDATED AND SET NEW TIES AS SHOWN IN PART C

(I) I, GREGG STROEING P.L.S. - 2753, CERTIFY THAT THE CORNER LOCATION SHOWN ON THIS RECORD WAS DETERMINED BY ME OR UNDER MY DIRECTION AND CONTROL AND THAT THIS U.S. PUBLIC LAND SURVEY MONUMENT RECORD IS CORRECT AND COMPLETE TO THE BEST OF MY KNOWLEDGE AND BELIEF.

SIGNATURE

12/09/2020

DATE



CORNER NO. 92

REMON 43092

GRANT COUNTY U.S. PUBLIC LAND SURVEY MONUMENT RECORD

INSTRUCTIONS: THIS RECORD SHALL SHOW THE LOCATION OF THE CORNER AND SHALL INCLUDE ALL OF THE FOLLOWING ELEMENTS (A THROUGH I).

(A) IDENTIFY THE CORNER AS REFERENCED TO THE U.S. PUBLIC LAND SURVEY SYSTEM

■ = CORNER MONUMENT RESTORED

WITNESSES TO CORNER LOCATION:

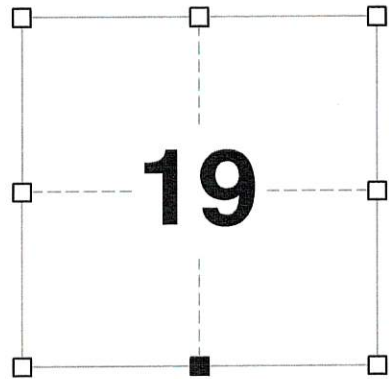
JAY P. ADAMS
PAIGE O. JELINEK

GEOGRAPHIC COORDINATES,
NAD 83 (2011) ADJUSTMENT:

LATITUDE: 42° 47' 57.90832"
LONGITUDE: 90° 46' 17.92988"

WISCONSIN COORDINATE REFERENCE SYSTEM (WISCRS),
GRANT COUNTY, NAD 83 (2011) ADJUSTMENT:

NORTHING: 505,945.67
EASTING: 802,609.90

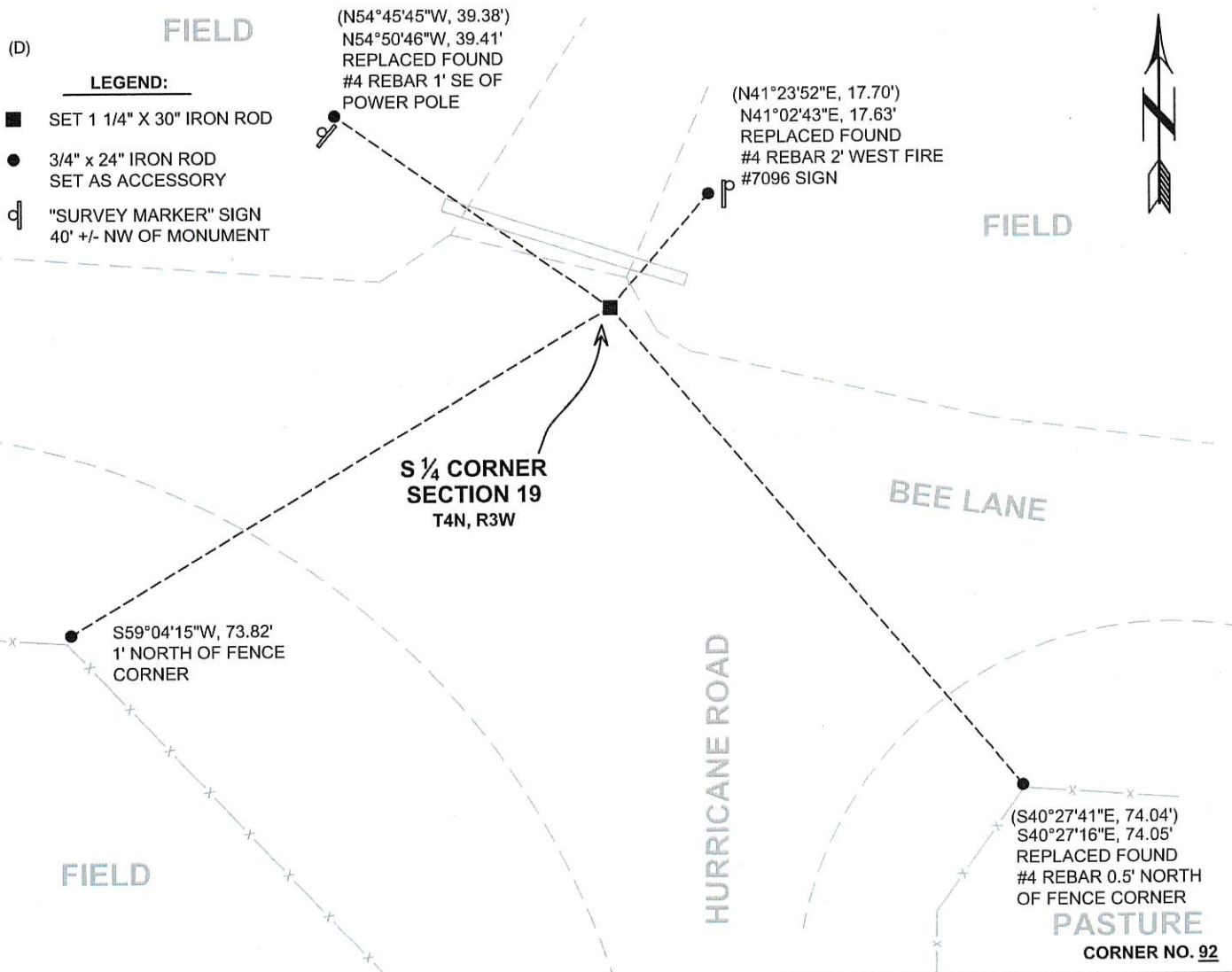


SECTION 19
TOWNSHIP 4 NORTH, RANGE 3 WEST
TOWN OF SOUTH LANCASTER

(B) DESCRIBE ANY RECORD EVIDENCE, MONUMENT EVIDENCE, OCCUPATIONAL EVIDENCE, TESTIMONIAL EVIDENCE OR ANY OTHER MATERIAL EVIDENCE YOU CONSIDERED, AND WHETHER THE MONUMENT WAS FOUND OR PLACED.

I COULD FIND NO MONUMENTS OR BEARING TREES FROM THE ORIGINAL GOVERNMENT SURVEY OR THE HISTORIC COUNTY SURVEYORS' SUBSEQUENT RESURVEYS. I RECOVERED THE #8 REBAR WITH GRANT COUNTY ALUMINUM CAP SET BY AARON AUSTIN AND ACCEPTED ITS LOCATION AS THE BEST AVAILABLE EVIDENCE OF THE ORIGINAL GOVERNMENT CORNER. I REMONUMENTED THE CORNER WITH A 2" x 30" STAINLESS STEEL PIPE WITH A 4" GRANT COUNTY BRASS CAP AS DEPICTED BELOW.

(C) IN THE PLAN VIEW DRAWING BELOW, PROVIDE REFERENCE TIES TO AT LEAST 4 WITNESS MONUMENTS. WITNESS MONUMENTS SHALL BE MADE OF CONCRETE, NATURAL STONE, IRON, BEARING TREES OR ANY OTHER EQUALLY DURABLE MATERIAL. DEPICT THE RELEVANT MONUMENTS AND REFERENCE TIES WITH SUFFICIENT DETAIL TO ENABLE ACCURATE RELOCATION OF THE CORNER IF THE CORNER MONUMENT IS DISTURBED.



(E) DESCRIBE ANY MATERIAL DISCREPANCY BETWEEN THE LOCATION OF THE CORNER AS RESTORED OR REESTABLISHED AND THE LOCATION OF THAT CORNER AS PREVIOUSLY RESTORED OR REESTABLISHED BY DISTANCE AND DIRECTION. SHOW THE DISCREPANCY ON THE PLAN VIEW DRAWING UNDER (D), ABOVE. SHOW THE DISTANCES BETWEEN THE CORNER AS PREVIOUSLY RESTORED OR REESTABLISHED AND (1) THE CORNER AS RESTORED OR REESTABLISHED, AND (2) TO AT LEAST 2 OF THE WITNESS MONUMENTS SHOWN ON THE DRAWING IN (D) ABOVE.

N/A

(F) WAS THE CORNER RESTORED THROUGH ACCEPTANCE OF (1) AN OBLITERATED EVIDENCE LOCATION, OR (2) A FOUND PERPETUATED LOCATION?

(2) A FOUND PERPETUATED LOCATION.

(G&H) WAS THE CORNER REESTABLISHED THROUGH LOST CORNER PROPORTIONATE METHODS? IF SO, SHOW THE METHOD, INCLUDING THE DIRECTIONS AND DISTANCES TO OTHER PUBLIC LAND SURVEY CORNERS USED AS EVIDENCE OR USED FOR PROPORTIONING IN DETERMINING THE CORNER LOCATION.

N/A

CORNER HISTORY

THE ORIGINAL GOVERNMENT CORNER WAS ESTABLISHED BY ROBERT CLARK JR. IN THE FIRST QUARTER OF 1833.

IN A SURVEY DATED 15 MAY 1840, FREEMAN WAS AT THE CORNER.

IN TWO SURVEYS IN 1844, WILTSE VISITED THE CORNER.

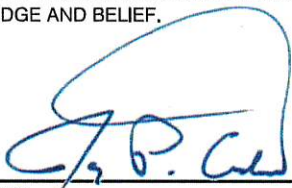
IN A SURVEY DATED 1848, GEO STUNTZ WAS AT THE CORNER.

IN A TIE SHEET DATED 14 DECEMBER 2004, LARRY AUSTIN SET A #8 x 30" REBAR WITH A GRANT COUNTY ALUMINUM CAP AT AN OCCUPIED LOCATION.

IN NUMEROUS SURVEYS SINCE THAT TIME, LARRY AUSTIN AND AARON AUSTIN REPORT FINDING THE #8 REBAR AND ALUMINUM CAP.

AFFIX LAND SURVEYOR SEAL

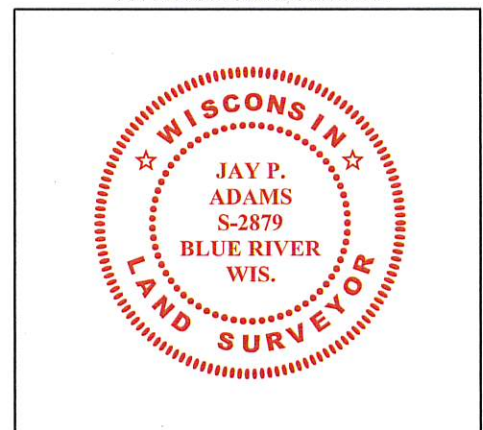
(I) I, JAY P. ADAMS, P.L.S. - 2879, CERTIFY THAT THE CORNER LOCATION SHOWN ON THIS RECORD WAS DETERMINED BY ME OR UNDER MY DIRECTION AND CONTROL AND THAT THIS U.S. PUBLIC LAND SURVEY MONUMENT RECORD IS CORRECT AND COMPLETE TO THE BEST OF MY KNOWLEDGE AND BELIEF.



30 MAY 2018

SIGNATURE

DATE



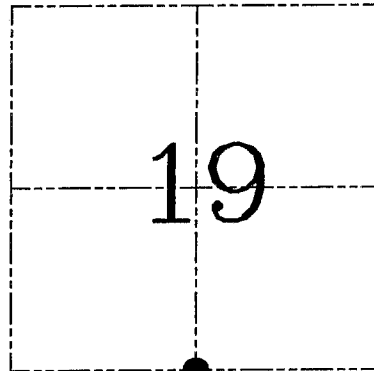
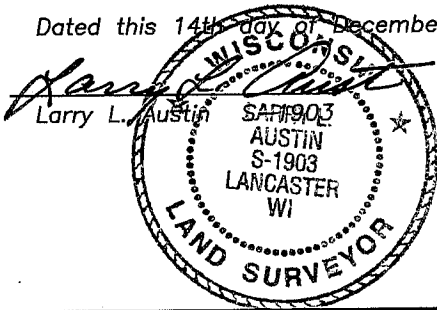
U.S. PUBLIC LAND SURVEY MONUMENT RECORD – GRANT COUNTY, WI

Section 19, Town 4 North Range 3 West, Town of South Lancaster

CERTIFICATE

I, Larry L. Austin, do hereby certify that the corner location on this record was determined by me and/or under my direct supervision and that this U.S. public land survey monument record is correct and complete to the best of my knowledge and belief.

Dated this 14th day of December, 2004



● = CORNER LOCATION

HISTORY OF CORNER ESTABLISHMENT

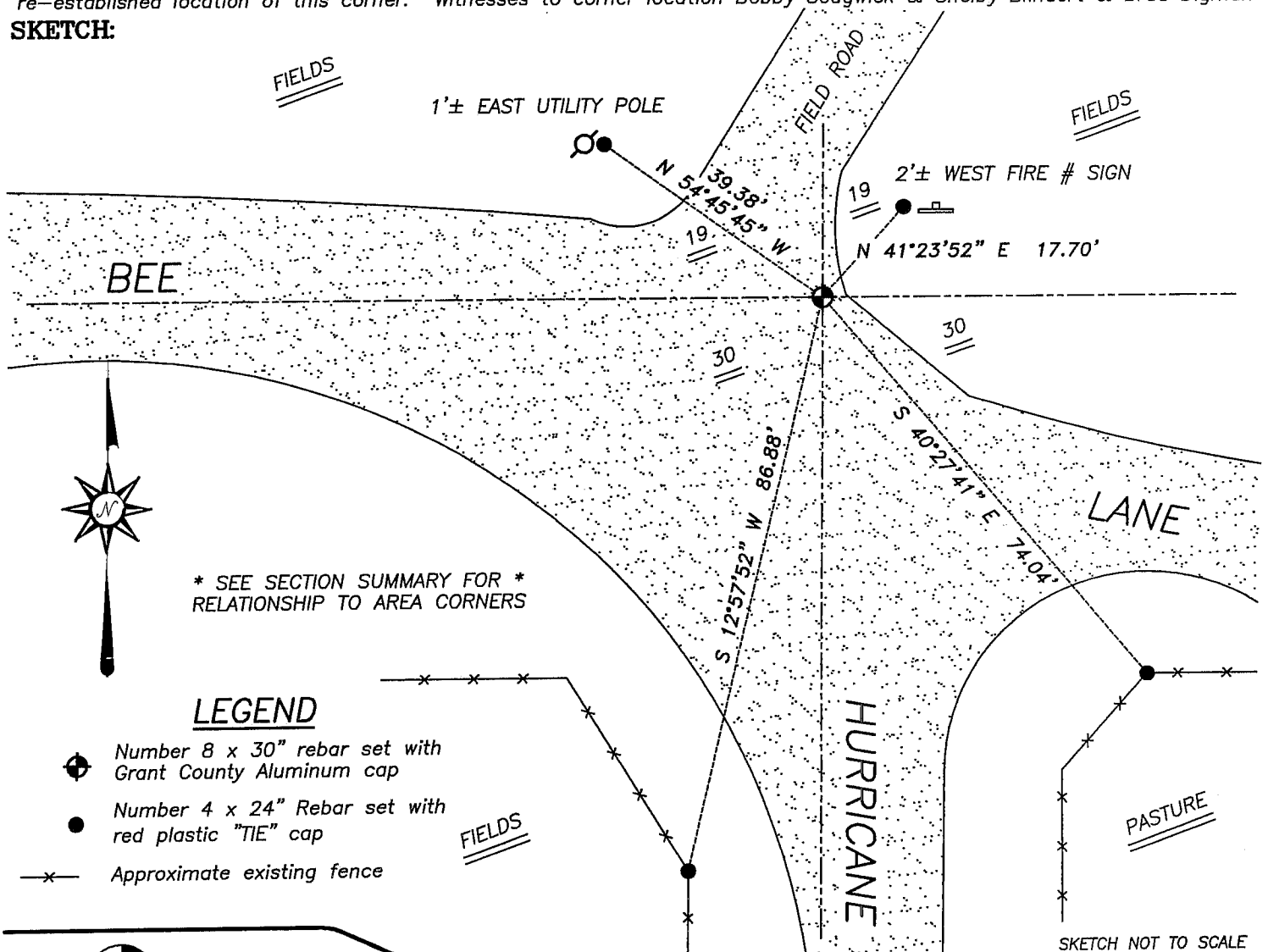
Corner was originally set in 1833 by Clark. Wiltse tied to the corner in 1844 with no mention of monument. No other record of the corner was found.

DESCRIPTION OF CORNER EVIDENCE FOUND

I reset the corner proportionately between the Southwest and Southeast corners of Section 19. Verified this location using EDM & GPS methods.

DESCRIPTION OF CORNER AND WITNESS MONUMENTS, references and accessories used to perpetuate the original or re-established location of this corner. Witnesses to corner location Bobby Sedgwick & Shelby Blindert & Brad Digman

SKETCH:

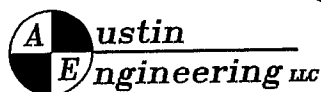


* SEE SECTION SUMMARY FOR *
RELATIONSHIP TO AREA CORNERS

LEGEND

- Number 8 x 30" rebar set with Grant County Aluminum cap
- Number 4 x 24" Rebar set with red plastic "TIE" cap
- x— Approximate existing fence

SKETCH NOT TO SCALE



4211 HWY 81 E, LANCASTER, WI 53813
PHONE 608-723-6363 FAX 608-723-6702

JOB NUMBER 04S249
FIELDBOOK: TSDR, 2417
G:\T4NR3W\17
H:\TIE\T4NR3W\92

DRAWN BY: SW AUSTIN
APPROVED: LL AUSTIN