

## GRANT COUNTY U.S. PUBLIC LAND SURVEY MONUMENT RECORD

INSTRUCTIONS: THIS RECORD SHALL SHOW THE LOCATION OF THE CORNER AND SHALL INCLUDE ALL OF THE FOLLOWING ELEMENTS (A THROUGH I).

(A) IDENTIFY THE CORNER AS REFERENCED TO THE U.S. PUBLIC LAND SURVEY SYSTEM

■ = CORNER MONUMENT RESTORED

WITNESSES TO CORNER LOCATION:

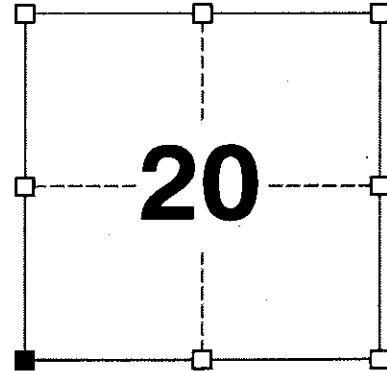
JAY P. ADAMS  
PAIGE O. JELINEK

GEOGRAPHIC COORDINATES,  
NAD 83 (2011) ADJUSTMENT:

LATITUDE: 42° 47' 57.39322"  
LONGITUDE: 90° 45' 42.56607"

WISCONSIN COORDINATE REFERENCE SYSTEM (WISCRS),  
GRANT COUNTY, NAD 83 (2011) ADJUSTMENT:

NORTHING: 505,894.56  
EASTING: 805,246.50



SECTION 20  
TOWNSHIP 4 NORTH, RANGE 3 WEST  
TOWN OF SOUTH LANCASTER

(B) DESCRIBE ANY RECORD EVIDENCE, MONUMENT EVIDENCE, OCCUPATIONAL EVIDENCE, TESTIMONIAL EVIDENCE OR ANY OTHER MATERIAL EVIDENCE YOU CONSIDERED, AND WHETHER THE MONUMENT WAS FOUND OR PLACED.

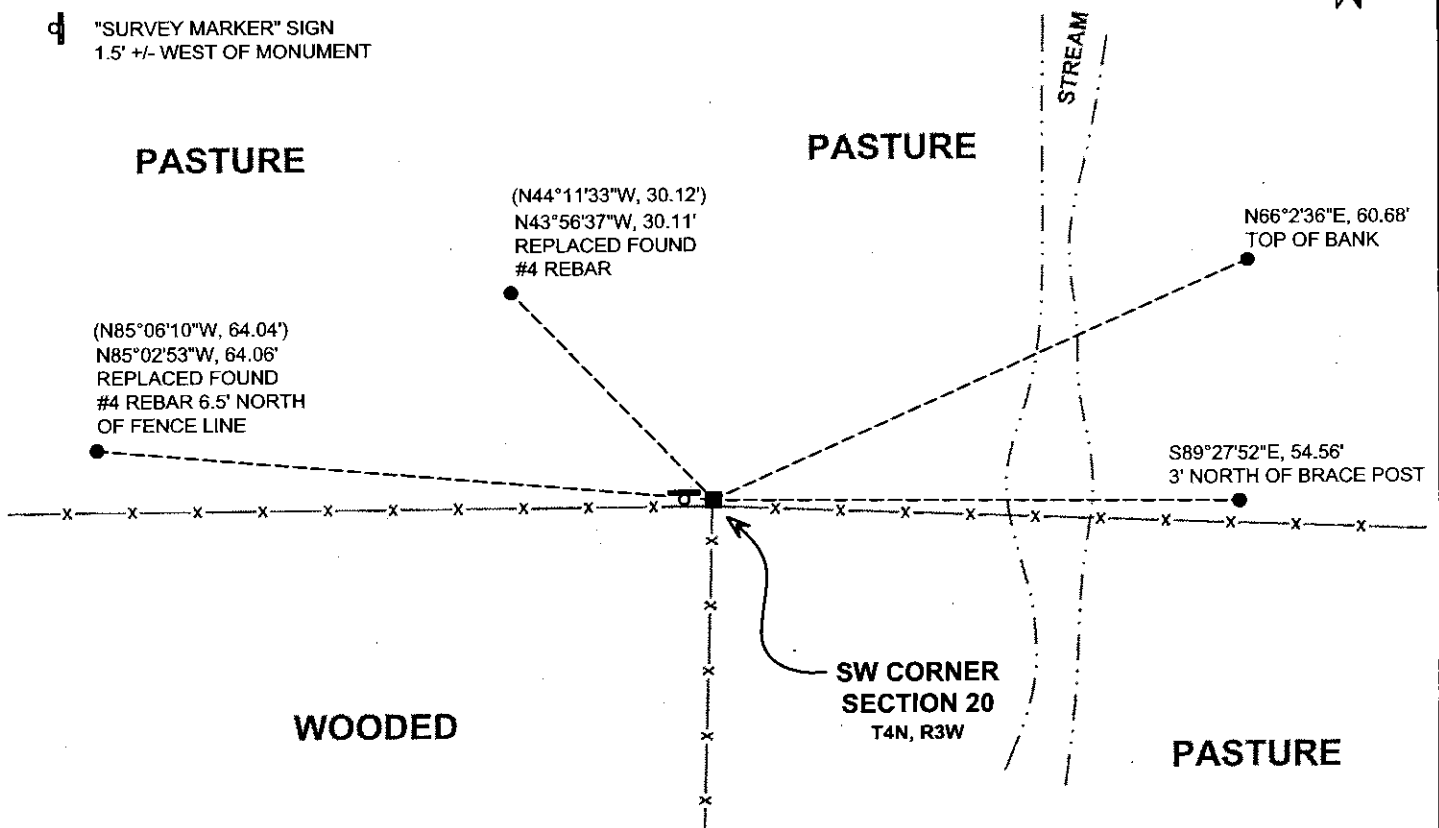
I COULD FIND NO MONUMENTS OR BEARING TREES FROM THE ORIGINAL GOVERNMENT SURVEY OR THE HISTORIC COUNTY SURVEYORS' SUBSEQUENT RESURVEYS. I DID RECOVER A PYRAMIDAL STONE DISTURBED AND DOWNHILL FROM THE FENCE CORNER THAT MAY HAVE BEEN THE ONE REFERENCED BY BARBER. I RECOVERED THE 1/4" DRILL HOLE IN THE CONCRETE FENCE POST BASE SET BY LARRY AUSTIN AND ACCEPTED ITS LOCATION AS THE BEST AVAILABLE EVIDENCE OF THE ORIGINAL GOVERNMENT CORNER. I REMONUMENTED THE CORNER WITH A 1.25" BRASS MARKER DRILLED IN PLACE OF THE 1/4" DRILL HOLE.

(C) IN THE PLAN VIEW DRAWING BELOW, PROVIDE REFERENCE TIES TO AT LEAST 4 WITNESS MONUMENTS. WITNESS MONUMENTS SHALL BE MADE OF CONCRETE, NATURAL STONE, IRON, BEARING TREES OR ANY OTHER EQUALLY DURABLE MATERIAL. DEPICT THE RELEVANT MONUMENTS AND REFERENCE TIES WITH SUFFICIENT DETAIL TO ENABLE ACCURATE RELOCATION OF THE CORNER IF THE CORNER MONUMENT IS DISTURBED.

(D)

**LEGEND:**

- SET 1.25" BRASS MARKER IN CONCRETE FENCE POST BASE
- 3/4" x 24" IRON ROD SET AS ACCESSORY
- ⊓ "SURVEY MARKER" SIGN 1.5' +/- WEST OF MONUMENT



# Remonumentation

(E) DESCRIBE ANY MATERIAL DISCREPANCY BETWEEN THE LOCATION OF THE CORNER AS RESTORED OR REESTABLISHED AND THE LOCATION OF THAT CORNER AS PREVIOUSLY RESTORED OR REESTABLISHED BY DISTANCE AND DIRECTION. SHOW THE DISCREPANCY ON THE PLAN VIEW DRAWING UNDER (D), ABOVE. SHOW THE DISTANCES BETWEEN THE CORNER AS PREVIOUSLY RESTORED OR REESTABLISHED AND (1) THE CORNER AS RESTORED OR REESTABLISHED, AND (2) TO AT LEAST 2 OF THE WITNESS MONUMENTS SHOWN ON THE DRAWING IN (D) ABOVE.

N/A

(F) WAS THE CORNER RESTORED THROUGH ACCEPTANCE OF (1) AN OBLITERATED EVIDENCE LOCATION, OR (2) A FOUND PERPETUATED LOCATION?

**(2) A FOUND PERPETUATED LOCATION.**

(G&H) WAS THE CORNER REESTABLISHED THROUGH LOST CORNER PROPORTIONATE METHODS? IF SO, SHOW THE METHOD, INCLUDING THE DIRECTIONS AND DISTANCES TO OTHER PUBLIC LAND SURVEY CORNERS USED AS EVIDENCE OR USED FOR PROPORTIONING IN DETERMINING THE CORNER LOCATION.

N/A

#### CORNER HISTORY

THE ORIGINAL GOVERNMENT CORNER WAS ESTABLISHED BY ROBERT CLARK JR. IN THE FIRST QUARTER OF 1833.

IN SURVEYS DATED 15 MAY 1840 AND 18 MARCH 1842, FREEMAN WAS AT THE CORNER.

IN TWO SURVEYS DATED FEBRUARY 1844, WILTSE VISITED THE CORNER.

IN A SURVEY DATED 10 AUGUST 1848, GEO STUNTZ WAS AT THE CORNER.

IN A SURVEY DATED 1 DECEMBER 1878 JOEL BARBER FOUND A STONE AND TOOK 2 WHITE OAK BEARING TREES.


IN A CERTIFIED SURVEY MAP DATED 17 APRIL 2000, LARRY AUSTIN REPORTS SETTING A #8 x 30" REBAR WITH A GRANT COUNTY ALUMINUM CAP.

IN A TIE SHEET 12 MAY 2000, LARRY AUSTIN REPORTS SETTING A 1/4" DRILL HOLE IN THE BASE OF AN "I" BEAM IN CONCRETE.

IN A PLAT OF SURVEY DATED 25 OCTOBER 2004, LARRY AUSTIN FOUND A DRILL HOLE IN CONCRETE BASE OF "I" BEAM POST.

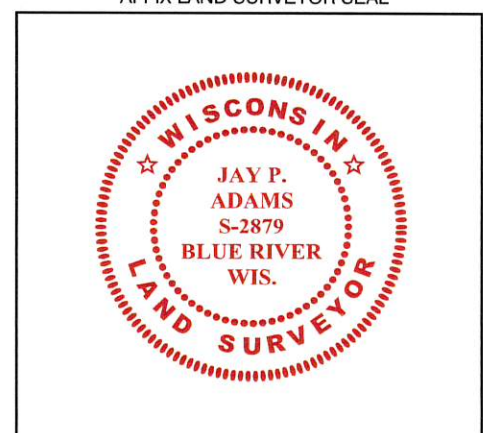
AFFIX LAND SURVEYOR SEAL

(I) I, JAY P. ADAMS, P.L.S. - 2879, CERTIFY THAT THE CORNER LOCATION SHOWN ON THIS RECORD WAS DETERMINED BY ME OR UNDER MY DIRECTION AND CONTROL AND THAT THIS U.S. PUBLIC LAND SURVEY MONUMENT RECORD IS CORRECT AND COMPLETE TO THE BEST OF MY KNOWLEDGE AND BELIEF.

  
SIGNATURE

**20 NOVEMBER 2018**

DATE



# GRANT COUNTY CERTIFIED LAND CORNER

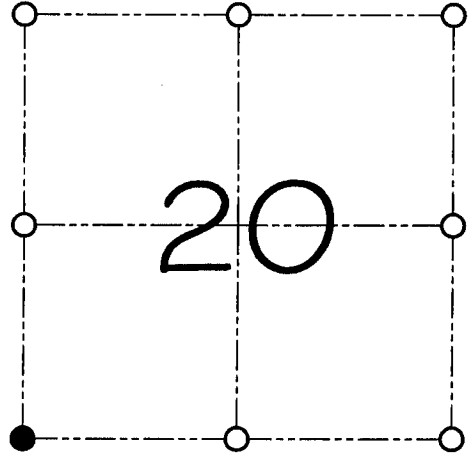
CORNER NUMBER 91

**CERTIFICATE:**

I, Larry L. Austin, do hereby certify that on the 5th day of May, 2000, I found evidence of the Southwest corner of Section 20, Town 4 North, Range 3 West, of the 4th Principal Meridian, and I re-established said corner according to the Wisconsin statutes as shown and described hereon.

Dated this 12th day of May 2000

*Larry L. Austin*  
Larry L. Austin S-1903



● = CORNER LOCATION

SOUTHWEST CORNER OF SECTION 20, T 4 N R 3 W TOWN OF SOUTH LANCASTER

**HISTORY OF ORIGINAL CORNER ESTABLISHMENT:**

Corner was originally set in 1833 by Robert Clark.  
In 1878 Joel Barber tied to the corner and found a Stone.

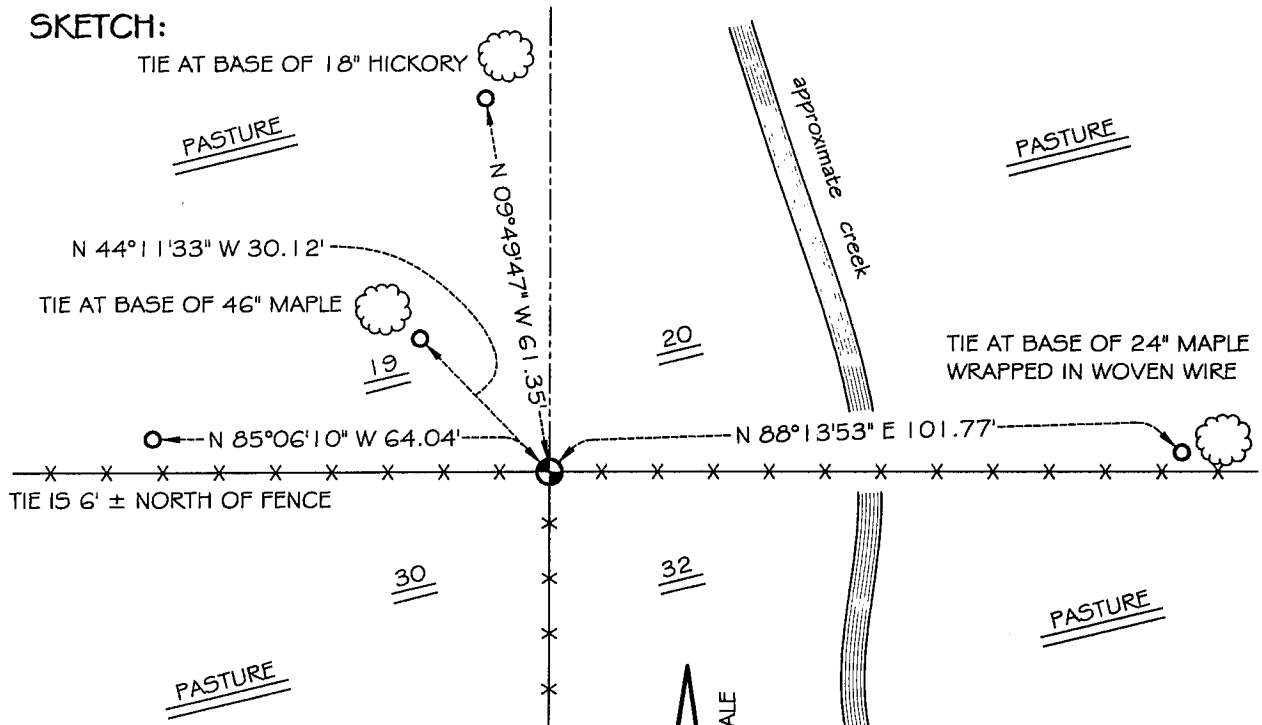
**DESCRIPTION OF CORNER EVIDENCE FOUND:**

I found no evidence of Barber's location of the corner. I found an existing fence corner and accepted it's location after an E.D.M. & G.P.S. traverse of the area

**DESCRIPTION OF CORNER AND WITNESS MONUMENTS, references and accessories used to perpetuate the original or re-established location of this corner**

WITNESS TO THE CORNER LOCATION: SHANE AUSTIN & SHELBY BLINDERT

**SKETCH:**



\* SEE SECTION SUMMARY FOR \*  
RELATIONSHIP TO AREA CORNERS

**LEGEND**

- 1/4" Hole placed in the base of 1" beam in concrete
- Number 4 by 24" rebar set with red plastic cap
- X— Existing fence location