

GRANT COUNTY U.S. PUBLIC LAND SURVEY MONUMENT RECORD

INSTRUCTIONS: THIS RECORD SHALL SHOW THE LOCATION OF THE CORNER AND SHALL INCLUDE ALL OF THE FOLLOWING ELEMENTS (A THROUGH I).

(A) IDENTIFY THE CORNER AS REFERENCED TO THE U.S. PUBLIC LAND SURVEY SYSTEM

■ = CORNER MONUMENT RESTORED

WITNESSES TO CORNER LOCATION:

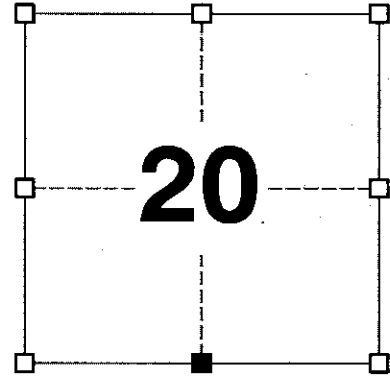
JAY P. ADAMS
PAIGE O. JELINEK

GEOGRAPHIC COORDINATES,
NAD 83 (2011) ADJUSTMENT:

LATITUDE: 42° 47' 56.90889"
LONGITUDE: 90° 45' 07.00120"

WISCONSIN COORDINATE REFERENCE SYSTEM (WISCRS),
GRANT COUNTY, NAD 83 (2011) ADJUSTMENT:

NORTHING: 505,846.88
EASTING: 807,898.09



SECTION 20
TOWNSHIP 4 NORTH, RANGE 3 WEST
TOWN OF SOUTH LANCASTER

(B) DESCRIBE ANY RECORD EVIDENCE, MONUMENT EVIDENCE, OCCUPATIONAL EVIDENCE, TESTIMONIAL EVIDENCE OR ANY OTHER MATERIAL EVIDENCE YOU CONSIDERED, AND WHETHER THE MONUMENT WAS FOUND OR PLACED.

I COULD FIND NO MONUMENTS OR BEARING TREES FROM THE ORIGINAL GOVERNMENT SURVEY. I RECOVERED THE #8 REBAR AND ALUMINUM CAP SET BY AUSTIN APPROXIMATELY 4 FEET NORTH OF A LONG-STANDING EAST/WEST FENCELINE. I EXCAVATED THE AREA AND LOCATED BARBER'S 24" x 24" x 10" STONE SET IN 1878 APPROXIMATELY 8" UNDER THE GROUND. I ACCEPTED THIS LOCATION AS THE BEST AVAILABLE EVIDENCE OF THE ORIGINAL GOVERNMENT CORNER AND LEFT THE STONE IN PLACE. I PLACED A 3/4" x 24" IRON ROD ON THE EAST SIDE OF THE STONE TO AID IN MAGNETIC LOCATION. I ALSO REMOVED THE ALUMINUM CAP FROM THE #8 REBAR SET BY AUSTIN.

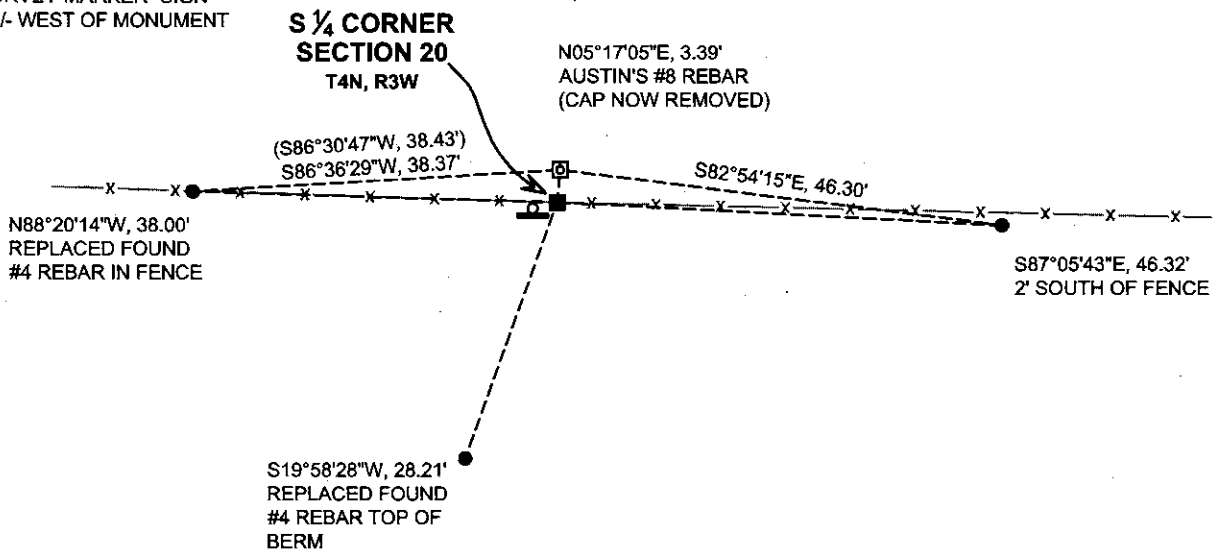
(C) IN THE PLAN VIEW DRAWING BELOW, PROVIDE REFERENCE TIES TO AT LEAST 4 WITNESS MONUMENTS. WITNESS MONUMENTS SHALL BE MADE OF CONCRETE, NATURAL STONE, IRON, BEARING TREES OR ANY OTHER EQUALLY DURABLE MATERIAL. DEPICT THE RELEVANT MONUMENTS AND REFERENCE TIES WITH SUFFICIENT DETAIL TO ENABLE ACCURATE RELOCATION OF THE CORNER IF THE CORNER MONUMENT IS DISTURBED.

(D)

LEGEND:

- FOUND BARBER'S 1878 24" x 24" x 10" STONE
- 3/4" x 24" IRON ROD SET AS ACCESSORY
- "SURVEY MARKER" SIGN 1' +/- WEST OF MONUMENT

PASTURE



PASTURE

PASTURE

Remonumentation

- (E) DESCRIBE ANY MATERIAL DISCREPANCY BETWEEN THE LOCATION OF THE CORNER AS RESTORED OR REESTABLISHED AND THE LOCATION OF THAT CORNER AS PREVIOUSLY RESTORED OR REESTABLISHED BY DISTANCE AND DIRECTION. SHOW THE DISCREPANCY ON THE PLAN VIEW DRAWING UNDER (D), ABOVE. SHOW THE DISTANCES BETWEEN THE CORNER AS PREVIOUSLY RESTORED OR REESTABLISHED AND (1) THE CORNER AS RESTORED OR REESTABLISHED, AND (2) TO AT LEAST 2 OF THE WITNESS MONUMENTS SHOWN ON THE DRAWING IN (D) ABOVE.

THIS CORNER WAS PREVIOUSLY REMONUMENTED WITH A #8 x 30" IRON ROD WITH A GRANT COUNTY ALUMINUM CAP. THIS LOCATION VARIES FROM THE 24" x 24" x 10" STONE PLACED BY BARBER IN 1878 THAT WAS SUBSEQUENTLY RECOVERED DURING REMONUMENTATION OF THIS CORNER.

- (F) WAS THE CORNER RESTORED THROUGH ACCEPTANCE OF (1) AN OBLITERATED EVIDENCE LOCATION, OR (2) A FOUND PERPETUATED LOCATION?

(2) A FOUND PERPETUATED LOCATION.

- (G&H) WAS THE CORNER REESTABLISHED THROUGH LOST CORNER PROPORTIONATE METHODS? IF SO, SHOW THE METHOD, INCLUDING THE DIRECTIONS AND DISTANCES TO OTHER PUBLIC LAND SURVEY CORNERS USED AS EVIDENCE OR USED FOR PROPORTIONING IN DETERMINING THE CORNER LOCATION.

N/A

CORNER HISTORY

THE ORIGINAL GOVERNMENT CORNER WAS ESTABLISHED BY ROBERT CLARK JR. IN THE FIRST QUARTER OF 1833.

IN A SURVEY DATED 18 MARCH 1842, FREEMAN WAS AT THE CORNER.

IN TWO SURVEYS DATED 6 FEBRUARY 1844, WILTSE WAS AT THE CORNER.

IN A SURVEY DATED 1 DECEMBER 1878, JOEL BARBER FOUND THE ORIGINAL CORNER AND SET A STONE 24" x 24" x 10" AND TOOK A WHITE OAK BEARING TREE.

IN A TIE SHEET DATED 12 MAY 2000, LARRY AUSTIN WAS UNABLE TO LOCATE BARBER'S STONE AND SET A #8 x 30" REBAR WITH GRANT COUNTY ALUMINUM CAP AT A PROPORTIONATE LOCATION. THIS MONUMENT WAS USED IN A CERTIFIED SURVEY MAP RECORDED IN VOLUME 5, PAGE 66.



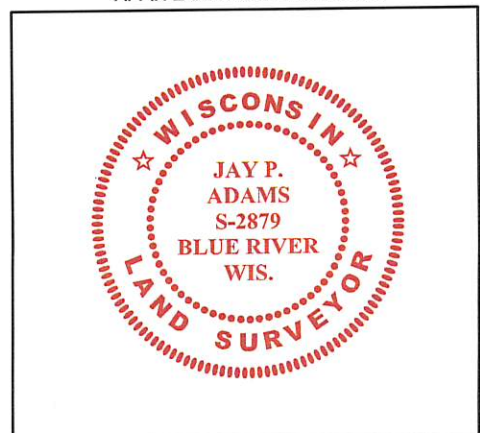
- (I) I, JAY P. ADAMS, P.L.S. - 2879, CERTIFY THAT THE CORNER LOCATION SHOWN ON THIS RECORD WAS DETERMINED BY ME OR UNDER MY DIRECTION AND CONTROL AND THAT THIS U.S. PUBLIC LAND SURVEY MONUMENT RECORD IS CORRECT AND COMPLETE TO THE BEST OF MY KNOWLEDGE AND BELIEF.

SIGNATURE

8 NOVEMBER 2018

DATE

AFFIX LAND SURVEYOR SEAL



GRANT COUNTY CERTIFIED LAND CORNER

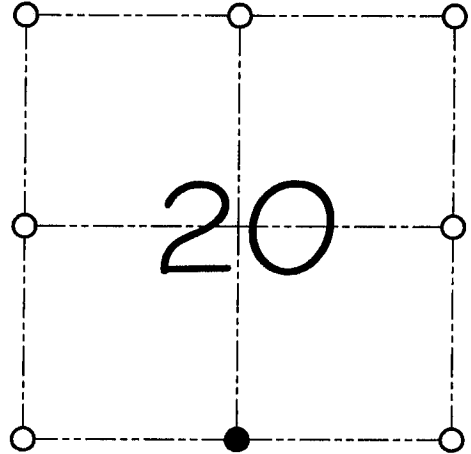
CORNER NUMBER 90

CERTIFICATE:

I, Larry L. Austin, do hereby certify that on the 5th day of May, 2000, I found evidence of the South 1/4 corner of Section 20, Town 4 North, Range 3 West, of the 4th Principal Meridian, and I re-established said corner according to the Wisconsin statutes as shown and described hereon.

Dated this 12th day of May, 2000

Larry L. Austin
Larry L. Austin S-1903



● = CORNER LOCATION
SOUTH 1/4 CORNER OF SECTION 20, T 4 N R 3 W TOWN OF SOUTH LANCASTER

HISTORY OF ORIGINAL CORNER ESTABLISHMENT:

Corner was originally set in 1833 by Robert Clark.
In 1878 Joel Barber set a Stone at this location.

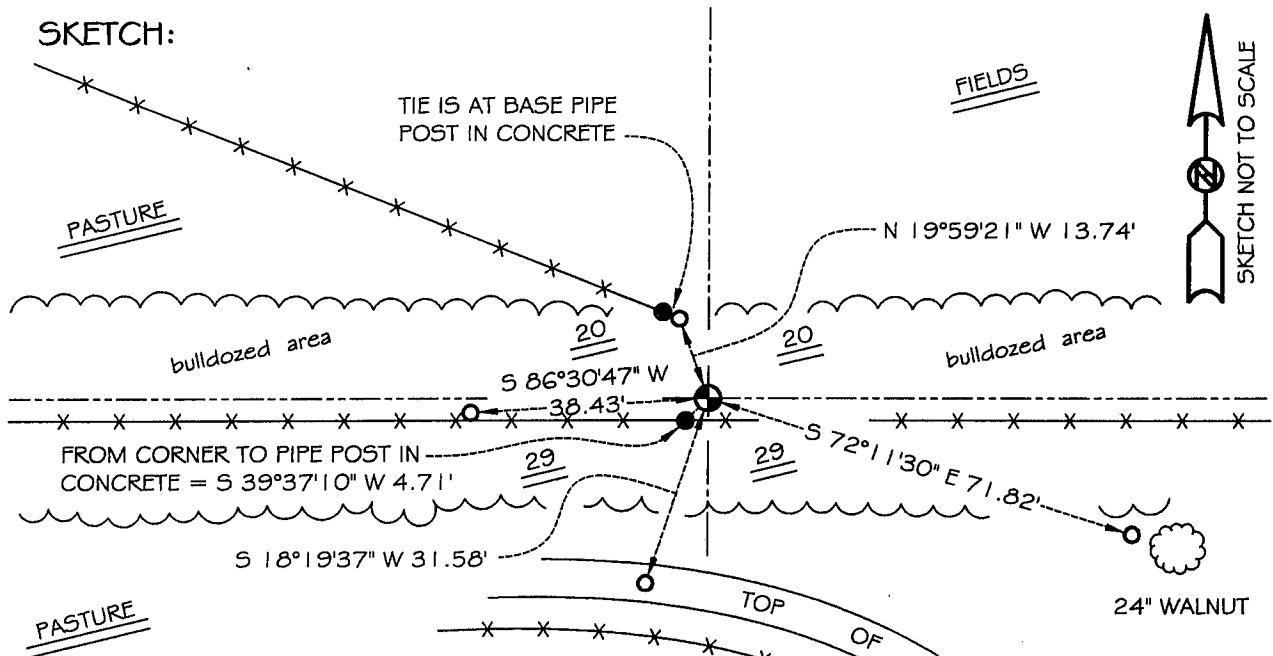
DESCRIPTION OF CORNER EVIDENCE FOUND:

I found no evidence to the location of the Stone. I reset the corner based on proportionate measurement to the Barber survey. Verified this location using E.D.M. & G.P.S. methods.

DESCRIPTION OF CORNER AND WITNESS MONUMENTS, references and accessories used to perpetuate the original or re-established location of this corner

WITNESS TO THE CORNER LOCATION: SHANE AUSTIN & SHELBY BLINDERT

SKETCH:



SKETCH NOT TO SCALE

LEGEND

- Number 8 by 30" rebar set with Grant County aluminum cap
- Number 4 by 24" rebar set with red plastic cap
- x- Existing fence location
- 3" Pipe post in concrete

* SEE SECTION SUMMARY FOR *
RELATIONSHIP TO AREA CORNERS