

## GRANT COUNTY U.S. PUBLIC LAND SURVEY MONUMENT RECORD

INSTRUCTIONS: THIS RECORD SHALL SHOW THE LOCATION OF THE CORNER AND SHALL INCLUDE ALL OF THE FOLLOWING ELEMENTS (A THROUGH I).

(A) IDENTIFY THE CORNER AS REFERENCED TO THE U.S. PUBLIC LAND SURVEY SYSTEM

■ = CORNER MONUMENT RESTORED

WITNESSES TO CORNER LOCATION:

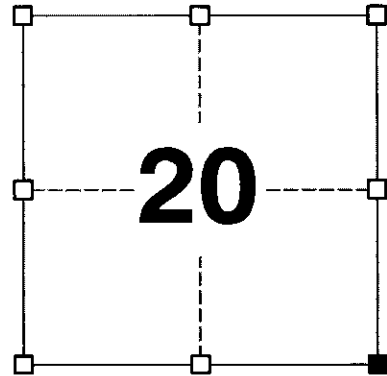
JAY P. ADAMS  
PAIGE O. JELINEK

GEOGRAPHIC COORDINATES,  
NAD 83 (2011) ADJUSTMENT:

LATITUDE: 42° 47' 56.48955"  
LONGITUDE: 90° 44' 31.46842"

WISCONSIN COORDINATE REFERENCE SYSTEM (WISCRS),  
GRANT COUNTY, NAD 83 (2011) ADJUSTMENT:

NORTHING: 505,806.09  
EASTING: 810,547.30



SECTION 20  
TOWNSHIP 4 NORTH, RANGE 3 WEST  
TOWN OF SOUTH LANCASTER

(B) DESCRIBE ANY RECORD EVIDENCE, MONUMENT EVIDENCE, OCCUPATIONAL EVIDENCE, TESTIMONIAL EVIDENCE OR ANY OTHER MATERIAL EVIDENCE YOU CONSIDERED, AND WHETHER THE MONUMENT WAS FOUND OR PLACED.

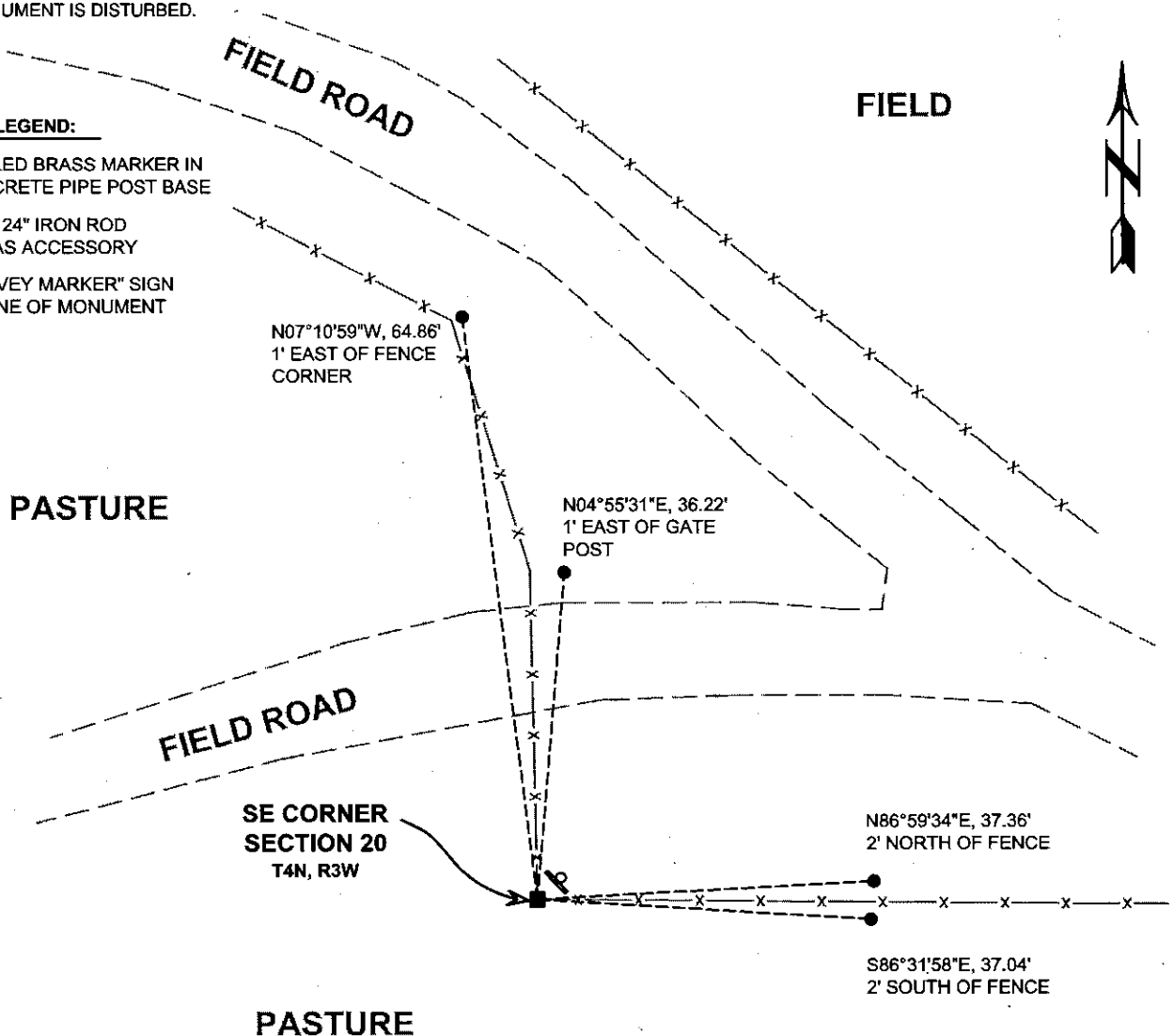
I COULD FIND NO MONUMENTS OR BEARING TREES FROM THE ORIGINAL GOVERNMENT SURVEY OR THE HISTORIC COUNTY SURVEYORS' SUBSEQUENT RESURVEYS. I RECOVERED THE DRILL HOLE IN THE CONCRETE BASE REFERENCED BY AUSTIN. THIS LOCATION WAS ACCEPTED AS THE BEST AVAILABLE EVIDENCE OF THE ORIGINAL GOVERNMENT CORNER AND I UPGRADED THE MONUMENT TO A BRASS CONCRETE MARKER DRILLED INTO THE BASE OF THE PIPE FENCE POST.

(C) IN THE PLAN VIEW DRAWING BELOW, PROVIDE REFERENCE TIES TO AT LEAST 4 WITNESS MONUMENTS. WITNESS MONUMENTS SHALL BE MADE OF CONCRETE, NATURAL STONE, IRON, BEARING TREES OR ANY OTHER EQUALLY DURABLE MATERIAL. DEPICT THE RELEVANT MONUMENTS AND REFERENCE TIES WITH SUFFICIENT DETAIL TO ENABLE ACCURATE RELOCATION OF THE CORNER IF THE CORNER MONUMENT IS DISTURBED.

(D)

**LEGEND:**

- DRILLED BRASS MARKER IN CONCRETE PIPE POST BASE
- 3/4" x 24" IRON ROD SET AS ACCESSORY
- Ⓧ "SURVEY MARKER" SIGN 1' +/- NE OF MONUMENT



## Remonumentation

- (E) DESCRIBE ANY MATERIAL DISCREPANCY BETWEEN THE LOCATION OF THE CORNER AS RESTORED OR REESTABLISHED AND THE LOCATION OF THAT CORNER AS PREVIOUSLY RESTORED OR REESTABLISHED BY DISTANCE AND DIRECTION. SHOW THE DISCREPANCY ON THE PLAN VIEW DRAWING UNDER (D), ABOVE. SHOW THE DISTANCES BETWEEN THE CORNER AS PREVIOUSLY RESTORED OR REESTABLISHED AND (1) THE CORNER AS RESTORED OR REESTABLISHED, AND (2) TO AT LEAST 2 OF THE WITNESS MONUMENTS SHOWN ON THE DRAWING IN (D) ABOVE.

N/A

- (F) WAS THE CORNER RESTORED THROUGH ACCEPTANCE OF (1) AN OBLITERATED EVIDENCE LOCATION, OR (2) A FOUND PERPETUATED LOCATION?

**(2) A FOUND PERPETUATED LOCATION.**

- (G&H) WAS THE CORNER REESTABLISHED THROUGH LOST CORNER PROPORTIONATE METHODS? IF SO, SHOW THE METHOD, INCLUDING THE DIRECTIONS AND DISTANCES TO OTHER PUBLIC LAND SURVEY CORNERS USED AS EVIDENCE OR USED FOR PROPORTIONING IN DETERMINING THE CORNER LOCATION.

N/A

### CORNER HISTORY

THE ORIGINAL GOVERNMENT CORNER WAS ESTABLISHED BY ROBERT CLARK JR. IN THE FIRST QUARTER OF 1833.

IN TWO SURVEYS DATED 6 FEBRUARY 1844, WILTSE WAS AT THE CORNER.

IN A SURVEY DATED 1 DECEMBER 1878, JOEL BARBER FOUND THE ORIGINAL CORNER AND SET A STONE AT THE CORNER.

IN A SURVEY DATED 20 JULY 1984, JOHN CEJKA MEASURED TO THE CORNER WITH NO MENTION OF A MONUMENT.

IN A TIE SHEET DATED 12 MAY 2000, LARRY AUSTIN WAS UNABLE TO LOCATE BARBER'S STONE AND HE PUT A DRILL HOLE IN A CONCRETE BASE OF A PIPE FENCE POST. THIS CORNER WAS NOTED IN A CERTIFIED SURVEY MAP RECORDED IN VOLUME 5, PAGE 66 AS BEING A #8 x 30" REBAR WITH GRANT COUNTY ALUMINUM CAP.

AFFIX LAND SURVEYOR SEAL

- (I) I, JAY P. ADAMS, P.L.S. - 2879, CERTIFY THAT THE CORNER LOCATION SHOWN ON THIS RECORD WAS DETERMINED BY ME OR UNDER MY DIRECTION AND CONTROL AND THAT THIS U.S. PUBLIC LAND SURVEY MONUMENT RECORD IS CORRECT AND COMPLETE TO THE BEST OF MY KNOWLEDGE AND BELIEF.



SIGNATURE

**8 NOVEMBER 2018**

DATE



# GRANT COUNTY CERTIFIED LAND CORNER

CORNER NUMBER 89

**CERTIFICATE:**

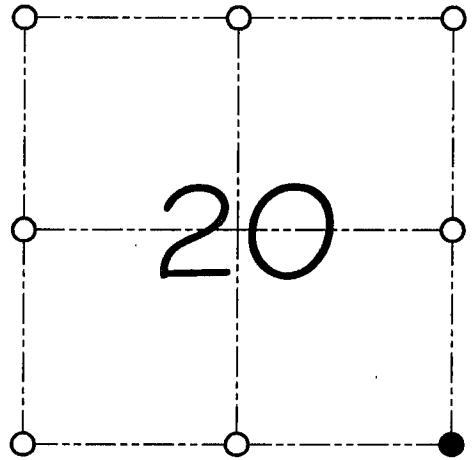
I, Larry L. Austin, do hereby certify that on the 5th day of May 2000, I found evidence of the Southeast corner of Section 20, Town 4 North, Range 3 West, of the 4th Principal Meridian, and I re-established said corner according to the Wisconsin statutes as shown and described hereon.

Dated this 12th day of May, 2000

*Larry L. Austin*  
Larry L. Austin S-1903



SEAL



● = CORNER LOCATION

SOUTHEAST CORNER OF  
SECTION 20, T 4 N R 3 W  
TOWN OF SOUTH LANCASTER

**HISTORY OF ORIGINAL CORNER ESTABLISHMENT:**

Corner was originally set in 1833 by Robert Clark.  
In 1878 Joel Barber tied to and set a Stone.

**DESCRIPTION OF CORNER EVIDENCE FOUND:**

I found an existing pipe post in concrete and accepted its location after an E.D.M. & G.P.S. traverse of the area.

**DESCRIPTION OF CORNER AND WITNESS MONUMENTS, references and accessories used to perpetuate the original or re-established location of this corner**

WITNESS TO THE CORNER LOCATION: SHANE AUSTIN & SHELBY BLINDERT

**SKETCH:**

