

## GRANT COUNTY U.S. PUBLIC LAND SURVEY MONUMENT RECORD

INSTRUCTIONS: THIS RECORD SHALL SHOW THE LOCATION OF THE CORNER AND SHALL INCLUDE ALL OF THE FOLLOWING ELEMENTS (A THROUGH I).

(A) IDENTIFY THE CORNER AS REFERENCED TO THE U.S. PUBLIC LAND SURVEY SYSTEM

■ = CORNER MONUMENT RESTORED

WITNESSES TO CORNER LOCATION:

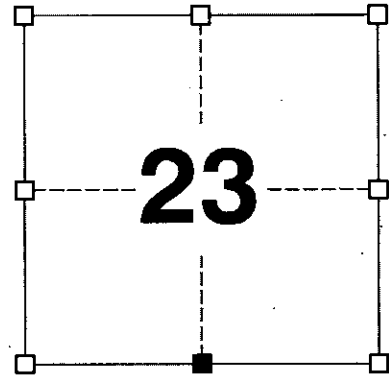
JAY P. ADAMS  
PAIGE O. JELINEK

GEOGRAPHIC COORDINATES,  
NAD 83 (2011) ADJUSTMENT:

LATITUDE: 42° 47' 55.95820"  
LONGITUDE: 90° 41' 34.84074"

WISCONSIN COORDINATE REFERENCE SYSTEM (WISCRS),  
GRANT COUNTY, NAD 83 (2011) ADJUSTMENT:

NORTHING: 505,765.17  
EASTING: 823,716.04



SECTION 23  
TOWNSHIP 4 NORTH, RANGE 3 WEST  
TOWN OF SOUTH LANCASTER

(B) DESCRIBE ANY RECORD EVIDENCE, MONUMENT EVIDENCE, OCCUPATIONAL EVIDENCE, TESTIMONIAL EVIDENCE OR ANY OTHER MATERIAL EVIDENCE YOU CONSIDERED, AND WHETHER THE MONUMENT WAS FOUND OR PLACED.

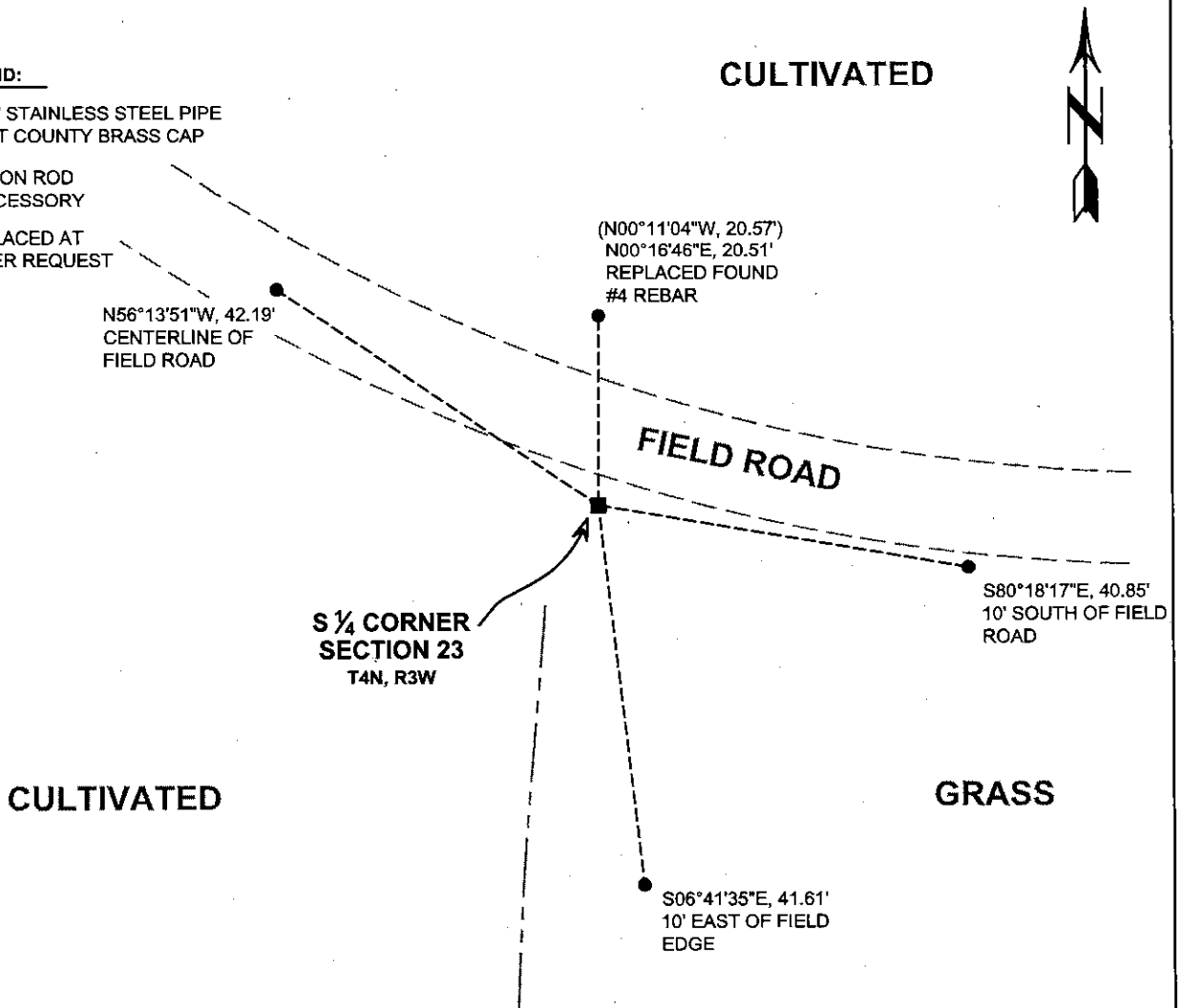
I COULD FIND NO MONUMENTS OR BEARING TREES FROM THE ORIGINAL GOVERNMENT SURVEY OR THE HISTORIC COUNTY SURVEYORS' SUBSEQUENT RESURVEYS. I RECOVERED THE ALUMINUM MONUMENT REFERENCED MOST RECENTLY BY AUSTIN. THIS LOCATION WAS FOUND TO BE LESS THAN 0.5 FEET FROM A SINGLE PROPORTIONATE LOCATION HALFWAY BETWEEN THE SOUTHEAST AND SOUTHWEST CORNERS OF SECTION 23. THIS MONUMENT REASONABLY MATCHES OCCUPATION AND HAS BEEN UTILIZED IN NUMEROUS AREA SURVEYS. I ACCEPTED THIS LOCATION OF THE CORNER AND REPLACED THE ALUMINUM MONUMENT WITH A 2" x 30" STAINLESS STEEL PIPE WITH A 4" GRANT COUNTY BRASS CAP.

(C) IN THE PLAN VIEW DRAWING BELOW, PROVIDE REFERENCE TIES TO AT LEAST 4 WITNESS MONUMENTS. WITNESS MONUMENTS SHALL BE MADE OF CONCRETE, NATURAL STONE, IRON, BEARING TREES OR ANY OTHER EQUALLY DURABLE MATERIAL. DEPICT THE RELEVANT MONUMENTS AND REFERENCE TIES WITH SUFFICIENT DETAIL TO ENABLE ACCURATE RELOCATION OF THE CORNER IF THE CORNER MONUMENT IS DISTURBED.

(D)

**LEGEND:**

- SET 2" x 30" STAINLESS STEEL PIPE w/ 4" GRANT COUNTY BRASS CAP
- 3/4" x 24" IRON ROD SET AS ACCESSORY
- d NO SIGN PLACED AT LANDOWNER REQUEST



# Remonumentation

(E) DESCRIBE ANY MATERIAL DISCREPANCY BETWEEN THE LOCATION OF THE CORNER AS RESTORED OR REESTABLISHED AND THE LOCATION OF THAT CORNER AS PREVIOUSLY RESTORED OR REESTABLISHED BY DISTANCE AND DIRECTION. SHOW THE DISCREPANCY ON THE PLAN VIEW DRAWING UNDER (D), ABOVE. SHOW THE DISTANCES BETWEEN THE CORNER AS PREVIOUSLY RESTORED OR REESTABLISHED AND (1) THE CORNER AS RESTORED OR REESTABLISHED, AND (2) TO AT LEAST 2 OF THE WITNESS MONUMENTS SHOWN ON THE DRAWING IN (D) ABOVE.

N/A

(F) WAS THE CORNER RESTORED THROUGH ACCEPTANCE OF (1) AN OBLITERATED EVIDENCE LOCATION, OR (2) A FOUND PERPETUATED LOCATION?

(2) A FOUND PERPETUATED LOCATION.

(G&H) WAS THE CORNER REESTABLISHED THROUGH LOST CORNER PROPORTIONATE METHODS? IF SO, SHOW THE METHOD, INCLUDING THE DIRECTIONS AND DISTANCES TO OTHER PUBLIC LAND SURVEY CORNERS USED AS EVIDENCE OR USED FOR PROPORTIONING IN DETERMINING THE CORNER LOCATION.

N/A

#### CORNER HISTORY

THE ORIGINAL GOVERNMENT CORNER WAS ESTABLISHED BY ROBERT CLARK JR. IN THE FIRST QUARTER OF 1833.

IN A SURVEY DATED FEBRUARY 1844, WILTSE WAS AT THE CORNER.

IN A SURVEY DATED OCTOBER 1849, STUNTZ PRORATED THE CORNER AND TOOK TWO BEARING TREES.

IN A SURVEY DATED 22 JUNE 1857, HAYDEN WAS AT THE CORNER.

IN A PLAT OF SURVEY DATED 12 APRIL 1996, DAVID BURBACH FOUND AN ALUMINUM MONUMENT AT THE CORNER.

IN AN ALTA SURVEY DATED 12 NOVEMBER 2012, JIMMY ROSE FOUND AN ALUMINUM MONUMENT AT THE CORNER.

IN A PLAT OF SURVEY AND TIE SHEET DATED 15 DECEMBER 2015, AARON AUSTIN FOUND AN ALUMINUM MONUMENT AT THE CORNER.

AFFIX LAND SURVEYOR SEAL

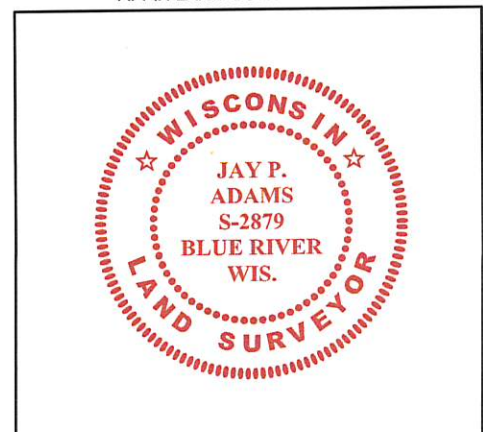
(I) I, JAY P. ADAMS, P.L.S. - 2879, CERTIFY THAT THE CORNER LOCATION SHOWN ON THIS RECORD WAS DETERMINED BY ME OR UNDER MY DIRECTION AND CONTROL AND THAT THIS U.S. PUBLIC LAND SURVEY MONUMENT RECORD IS CORRECT AND COMPLETE TO THE BEST OF MY KNOWLEDGE AND BELIEF.



SIGNATURE

12 NOVEMBER 2018

DATE



# U.S. PUBLIC LAND SURVEY MONUMENT RECORD - GRANT COUNTY, WI

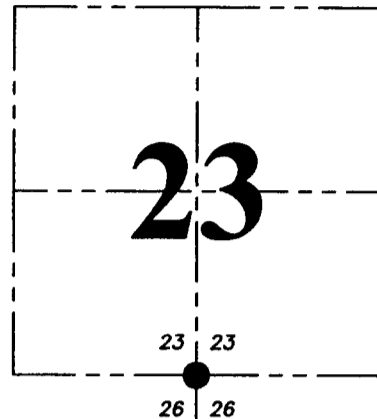
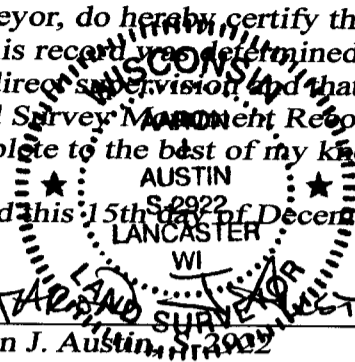
Section 23, Town 4 North Range 3 West, Town of South Lancaster

**CERTIFICATE:**

I, Aaron J. Austin, Wisconsin Professional Land Surveyor, do hereby certify that the corner location on this record was determined by me and/or under my direct supervision and that this U.S. Public Land Survey Monument Record is correct and complete to the best of my knowledge and belief.

Dated this 15th day of December 2015.

*Aaron J. Austin*  
 Aaron J. Austin, Wisconsin Professional Land Surveyor  
 S 2922  
 LANCASTER, WI



● = CORNER LOCATION

HISTORY OF CORNER ESTABLISHMENT:

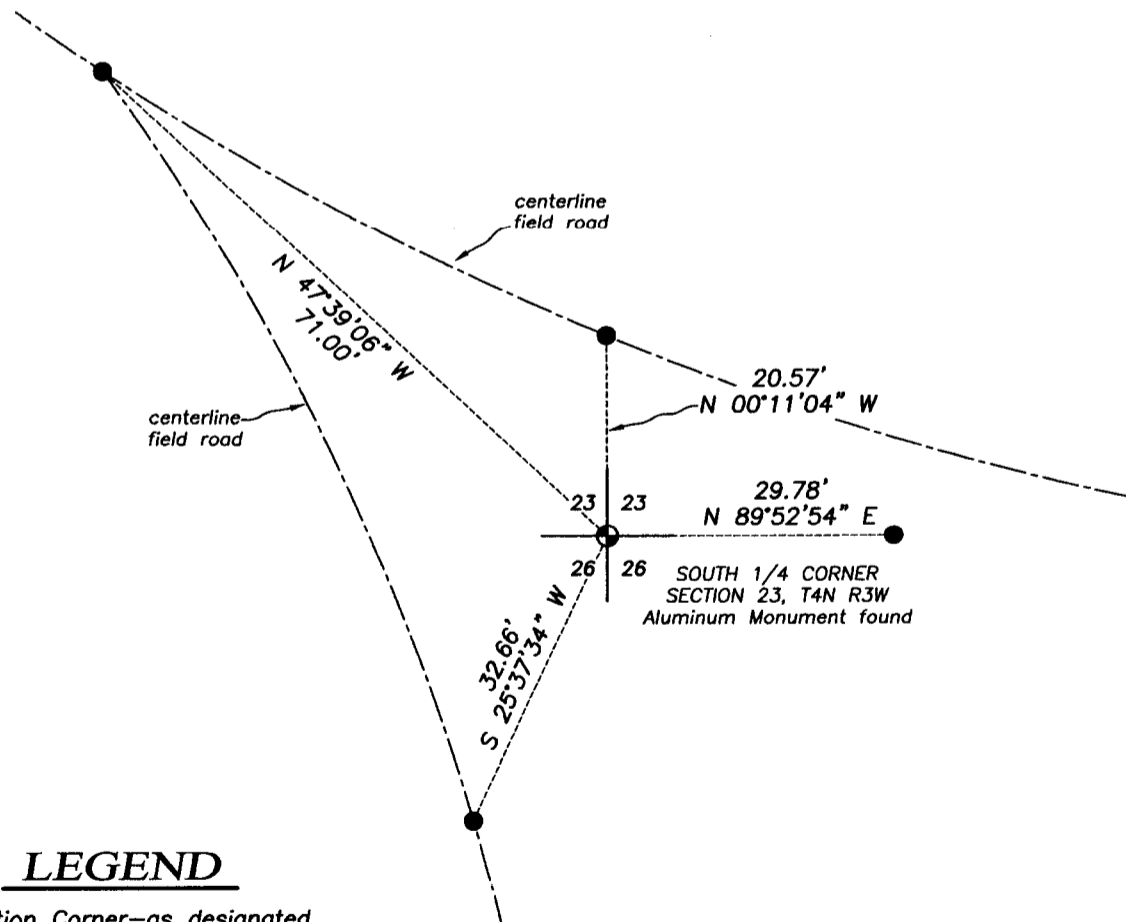
- 1833-Robert Clark set original corner.
- 2012-Jimmy Rose tied to the corner on a Survey filed in Book 32, Page 48.
- 1844-Wiltse tied to the corner on a Survey in Book A, Page 175.
- 1849-Stuntz tied to the corner on a Survey in Book B, Page 183.
- 1858-Hayden tied to the corner on a Survey filed in Book C, Page 183.
- 1996-Burbach tied to the corner on a Survey in Book Y, Page 19.

DESCRIPTION OF CORNER EVIDENCE FOUND:

I found the Monument in place and set four witness corners after I verified its location with E.D.M. and G.P.S. methods.

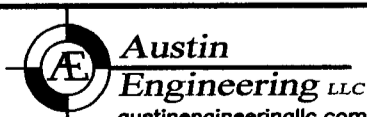
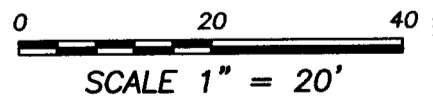
DESCRIPTION OF CORNER AND WITNESS MONUMENTS, references and accessories used to perpetuate the original or re-established location of this corner. Witnesses to corner location Shane Austin.

SKETCH:



LEGEND

- ⊕ Section Corner—as designated
- 1/2" x 12" Rebar set



4211 HWY 81 E, LANCASTER, WI 53813  
 PHONE: 608-723-6363 FAX: 608-723-6702

JOB NO: 15s053  
 H:\CRD\15s053  
 H:\TIE\T4NR3W\84

FIELDBOOK: TDSR  
 DRAWN BY: AJ AUSTIN  
 CREW: SW AUSTIN