

GRANT COUNTY U.S. PUBLIC LAND SURVEY MONUMENT RECORD

INSTRUCTIONS: THIS RECORD SHALL SHOW THE LOCATION OF THE CORNER AND SHALL INCLUDE ALL OF THE FOLLOWING ELEMENTS (A THROUGH I).

(A) IDENTIFY THE CORNER AS REFERENCED TO THE U.S. PUBLIC LAND SURVEY SYSTEM

■ = CORNER MONUMENT RESTORED

WITNESSES TO CORNER LOCATION:

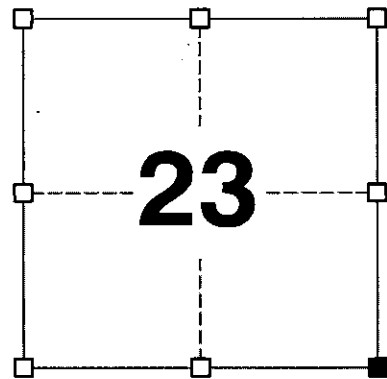
JAY P. ADAMS
BRADLEY R. BOMKAMP

GEOGRAPHIC COORDINATES,
NAD 83 (2011) ADJUSTMENT:

LATITUDE: 42° 47' 55.76193"
LONGITUDE: 90° 40' 59.16122"

WISCONSIN COORDINATE REFERENCE SYSTEM (WISCRS),
GRANT COUNTY, NAD 83 (2011) ADJUSTMENT:

NORTHING: 505,748.83
EASTING: 826,376.20



SECTION 23
TOWNSHIP 4 NORTH, RANGE 3 WEST
TOWN OF SOUTH LANCASTER

(B) DESCRIBE ANY RECORD EVIDENCE, MONUMENT EVIDENCE, OCCUPATIONAL EVIDENCE, TESTIMONIAL EVIDENCE OR ANY OTHER MATERIAL EVIDENCE YOU CONSIDERED, AND WHETHER THE MONUMENT WAS FOUND OR PLACED.

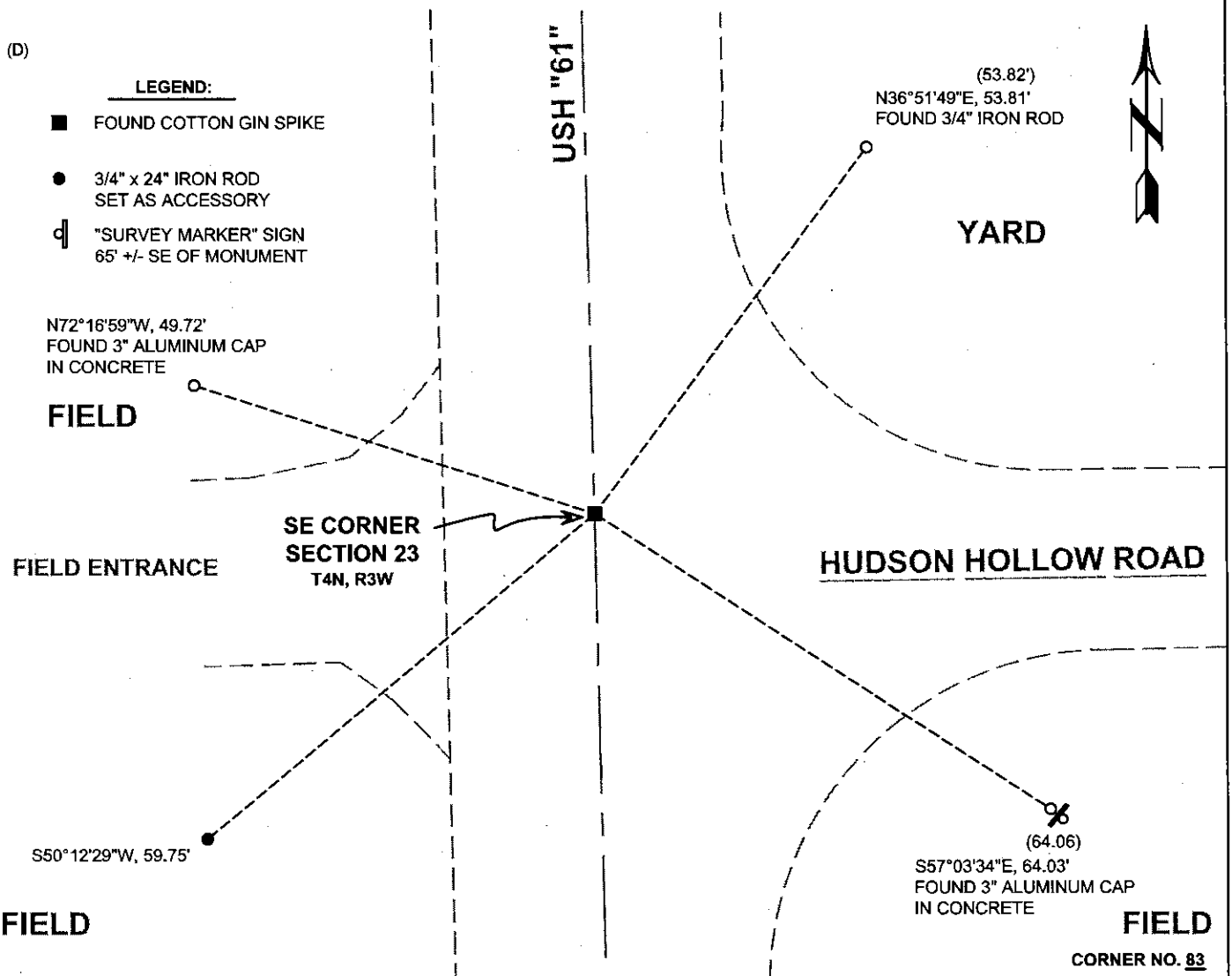
I COULD FIND NO MONUMENTS OR BEARING TREES FROM THE ORIGINAL GOVERNMENT SURVEY OR THE HISTORIC COUNTY SURVEYORS' SUBSEQUENT RESURVEYS. I RECOVERED THE COTTON GIN SPIKE SET BY KREBS AS REPORTED ON HIS TIE SHEET. THIS LOCATION WAS ACCEPTED AS THE BEST AVAILABLE EVIDENCE OF THE ORIGINAL GOVERNMENT CORNER AND THE MONUMENT WAS LEFT IN PLACE BECAUSE OF EXCEPTIONAL STABILITY.

(C) IN THE PLAN VIEW DRAWING BELOW, PROVIDE REFERENCE TIES TO AT LEAST 4 WITNESS MONUMENTS. WITNESS MONUMENTS SHALL BE MADE OF CONCRETE, NATURAL STONE, IRON, BEARING TREES OR ANY OTHER EQUALLY DURABLE MATERIAL. DEPICT THE RELEVANT MONUMENTS AND REFERENCE TIES WITH SUFFICIENT DETAIL TO ENABLE ACCURATE RELOCATION OF THE CORNER IF THE CORNER MONUMENT IS DISTURBED.

(D)

LEGEND:

- FOUND COTTON GIN SPIKE
- 3/4" x 24" IRON ROD SET AS ACCESSORY
- ⊥ "SURVEY MARKER" SIGN 65' +/- SE OF MONUMENT



Remonumentation

(E) DESCRIBE ANY MATERIAL DISCREPANCY BETWEEN THE LOCATION OF THE CORNER AS RESTORED OR REESTABLISHED AND THE LOCATION OF THAT CORNER AS PREVIOUSLY RESTORED OR REESTABLISHED BY DISTANCE AND DIRECTION. SHOW THE DISCREPANCY ON THE PLAN VIEW DRAWING UNDER (D), ABOVE. SHOW THE DISTANCES BETWEEN THE CORNER AS PREVIOUSLY RESTORED OR REESTABLISHED AND (1) THE CORNER AS RESTORED OR REESTABLISHED, AND (2) TO AT LEAST 2 OF THE WITNESS MONUMENTS SHOWN ON THE DRAWING IN (D) ABOVE.

N/A

(F) WAS THE CORNER RESTORED THROUGH ACCEPTANCE OF (1) AN OBLITERATED EVIDENCE LOCATION, OR (2) A FOUND PERPETUATED LOCATION?

(2) A FOUND PERPETUATED LOCATION.

(G&H) WAS THE CORNER REESTABLISHED THROUGH LOST CORNER PROPORTIONATE METHODS? IF SO, SHOW THE METHOD, INCLUDING THE DIRECTIONS AND DISTANCES TO OTHER PUBLIC LAND SURVEY CORNERS USED AS EVIDENCE OR USED FOR PROPORTIONING IN DETERMINING THE CORNER LOCATION.

N/A

CORNER HISTORY

THE ORIGINAL GOVERNMENT CORNER WAS ESTABLISHED BY ROBERT CLARK JR. IN THE FIRST QUARTER OF 1833.

IN A SURVEY DATED OCTOBER 1849 GEO STUNTZ FOUND THE CORNER.

IN A SURVEY DATED 22 JUNE 1857 HAYDEN WAS AT THE CORNER.

IN A TIE SHEET DATED 9 MARCH 1988, TIMOTHY MOORE SET 3/4" IRON ROD WITH CAP AFTER EXAMINING OCCUPATIONAL EVIDENCE AND MEASURING TO OTHER AREA SECTION CORNERS.

IN A PLAT OF SURVEY DATED 12 MARCH 1996, DAVID BURBACH FOUND AN ALUMINUM MONUMENT.

IN A PLAT OF SURVEY DATED 11 MAY 1998, THOMAS BUCK FOUND AN IRON ROD.

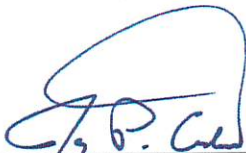
IN A PLAT OF SURVEY DATED 14 MARCH 2012, AARON AUSTIN STATES A COTTON GIN SPIKE IS TO BE SET.

IN A TIE SHEET DATED 23 APRIL 2012, JOHN KREBS SET A COTTON PIN AT THE CORNER LOCATION REPORTED BY TIMOTHY MOORE FOLLOWING ROAD CONSTRUCTION.

IN AN ALTA SURVEY DATED 12 NOVEMBER 2012, JIMMY ROSE FOUND A "COTTON SPINDLE."

AFFIX LAND SURVEYOR SEAL

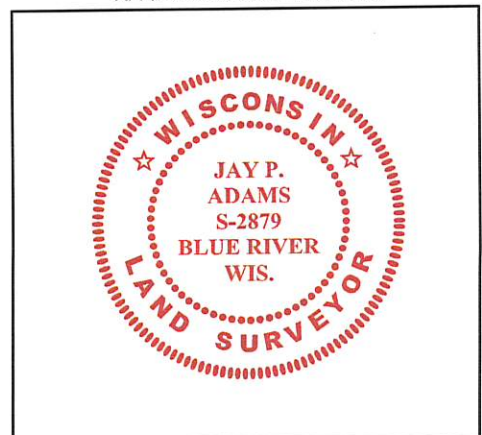
(I) I, JAY P. ADAMS, P.L.S. - 2879, CERTIFY THAT THE CORNER LOCATION SHOWN ON THIS RECORD WAS DETERMINED BY ME OR UNDER MY DIRECTION AND CONTROL AND THAT THIS U.S. PUBLIC LAND SURVEY MONUMENT RECORD IS CORRECT AND COMPLETE TO THE BEST OF MY KNOWLEDGE AND BELIEF.



SIGNATURE

12 NOVEMBER 2018

DATE



U.S. PUBLIC LAND SURVEY MONUMENT RECORD - GRANT COUNTY, WI

Section 23, Town 4 North, Range 3 West, Town of South Lancaster

(a)

NOTE: This form is intended and designed to fulfill all requirements of Wisconsin Administrative Code, Chapter A-E 7.08, U.S. Public Land Survey Monument Record (3) (a) (b) (c) (d) (e) (f) (g) (h) (i). "An additional sheet may be added if necessary to conform with said requirements."

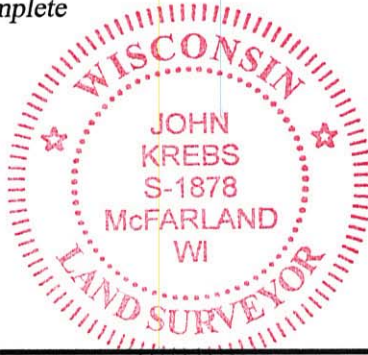
CERTIFICATE:

(i)

I, John Krebs, do hereby certify that the corner location on this record was determined by me and/or under my direct supervision and that this U.S. Public Land Survey Monument Record is correct and complete to the best of my knowledge and belief.

Dated this 4th day of April, 2012.

John Krebs 4-23-12
 John Krebs, S-1878



CORNER LOCATION

HISTORY OF CORNER ESTABLISHMENT:

Monument set by Timothy J. Moore as shown on a tie sheet dated March 9, 1988. Michael S. O'Keefe, S-2743, located corner on July 6, 2011, before road construction began.

DESCRIPTION OF CORNER EVIDENCE FOUND:

(b) (f) (g) (h)

Monument was removed during road construction. Replaced corner per location by Michael S. O'Keefe. Found two ties per tie sheet by Timothy J. Moore, S-1830, dated March 9, 1988. Set cotton pin at Section corner, found two additional ties and set one tie as shown hereon.

Witnesses to corner location _____

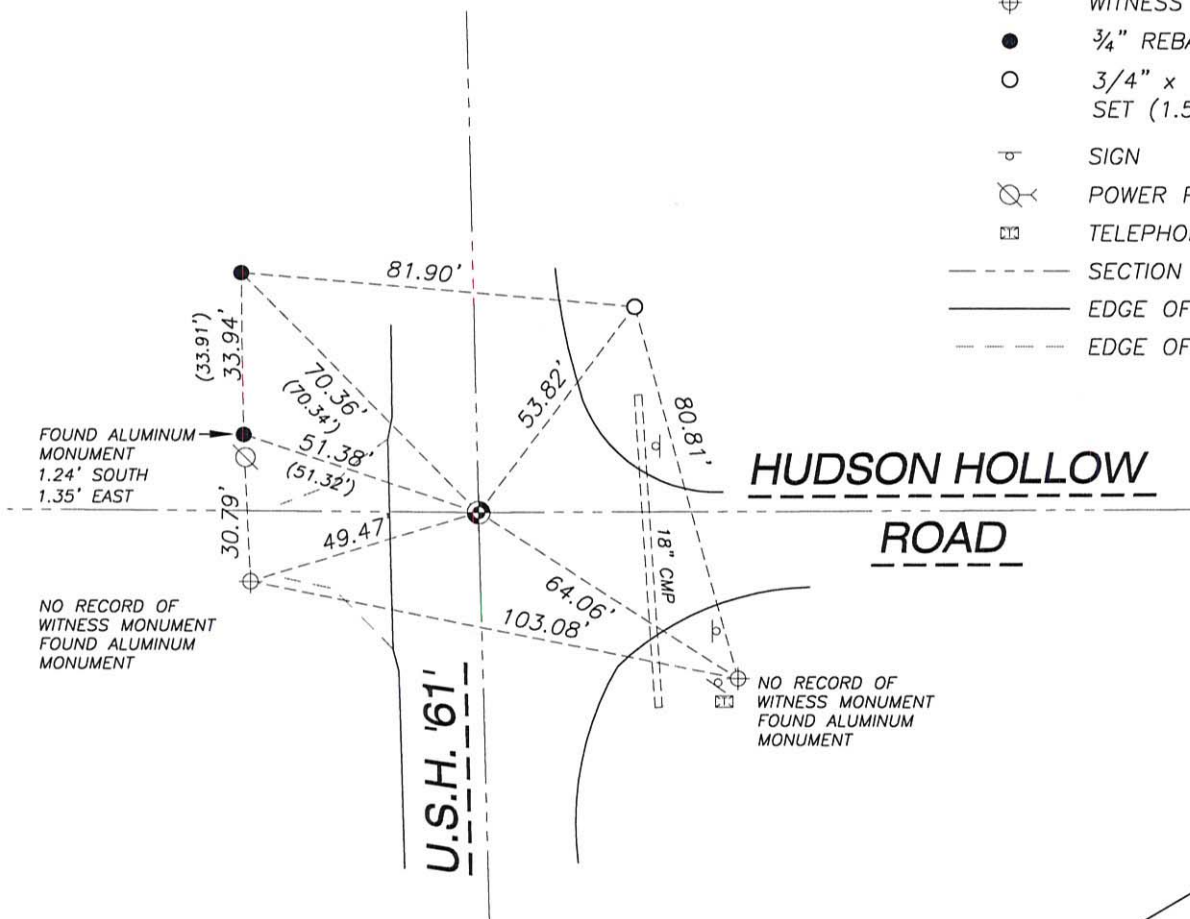
DESCRIPTION OF CORNER AND WITNESS MONUMENTS: references and accessories used to perpetuate the original or re-established location of this corner.

(c) (d) (e)

SKETCH:

LEGEND

- GOVERNMENT CORNER
- WITNESS MONUMENT FOUND
- 3/4" REBAR FOUND
- 3/4" x 24" REBAR SET (1.50 LBS/LF)
- SIGN
- POWER POLE W/GUY
- TELEPHONE PEDESTAL
- SECTION LINE
- EDGE OF PAVEMENT
- EDGE OF GRAVEL



SCALE: 1" = 40'

SHEET 1 OF 1

83

J:\2011\114660\dwg\11-4660 WisDOT Dickeyville.dwg

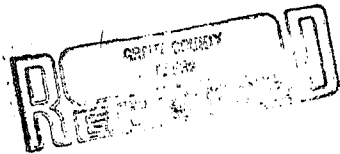
U. S. PUBLIC LAND SURVEY MONUMENT RECORD

INSTRUCTIONS: This record shall show the location of the corner and shall include all of the following nine elements (a through i).

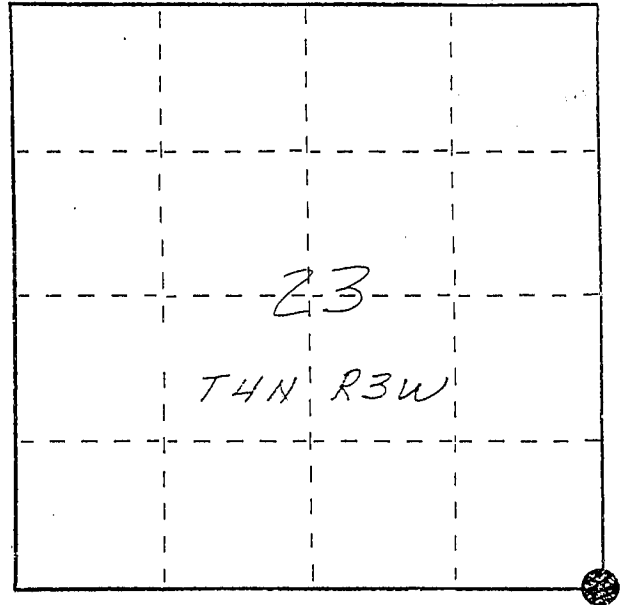
(a) Identify the corner by reference to the U.S. public land survey system.

● = Corner monument restored.

SE corner section 23
T4N R3W of the
4th P.M.
Town of South Lancaster
Grant County, Wisconsin.



APR 27 1998



(b) Describe any record evidence, monument evidence, occupational evidence, testimonial evidence or any other material evidence you considered, and whether the monument was found or placed.

Monument set by intersecting south line of section 23 with the E of U.S. hwy 61. The E of 61 was held as shown on the 1935 hwy R/W plat. The south line of section 23 was set by extending a line easterly from the reestablished SW corner of said section 23 through an ancient fence corner post at the SW-SE-SE. The established corner location fits well with other reestablished corners in the section and also occupation fences to the south and east.

Due to planned construction, Berntsen monument was not set.

(c) In the plan view drawing below, provide reference ties to at least 4 witness monuments, or, if the location is within a municipality, to at least 2 witness monuments. (Witness monuments shall be made of concrete, natural stone, iron or other equally durable material, ~~except~~ ~~wood~~.) Describe witness monuments.

(d) Show a plan view drawing depicting the relevant monuments and reference ties which is sufficient in detail to enable accurate relocation of the corner monument if the corner monument is disturbed. Indicate north.

