

GRANT COUNTY U.S. PUBLIC LAND SURVEY MONUMENT RECORD

INSTRUCTIONS: THIS RECORD SHALL SHOW THE LOCATION OF THE CORNER AND SHALL INCLUDE ALL OF THE FOLLOWING ELEMENTS (A THROUGH I).

(A) IDENTIFY THE CORNER AS REFERENCED TO THE U.S. PUBLIC LAND SURVEY SYSTEM

■ = CORNER MONUMENT RESTORED

WITNESSES TO CORNER LOCATION:

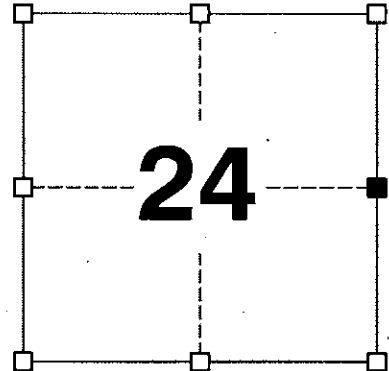
JAMIE L. BRANDT
STEVEN A. ALT

GEOGRAPHIC COORDINATES,
NAD 83 (2011) ADJUSTMENT:

LATITUDE: 42° 48' 22.52480"
LONGITUDE: 90° 39' 49.04712"

WISCONSIN COORDINATE REFERENCE SYSTEM (WISCRS),
GRANT COUNTY, NAD 83 (2011) ADJUSTMENT:

NORTHING: 508,466.25
EASTING: 831,599.27



SECTION 24
TOWNSHIP 4 NORTH, RANGE 3 WEST
TOWN OF SOUTH LANCASTER

(B) DESCRIBE ANY RECORD EVIDENCE, MONUMENT EVIDENCE, OCCUPATIONAL EVIDENCE, TESTIMONIAL EVIDENCE OR ANY OTHER MATERIAL EVIDENCE YOU CONSIDERED, AND WHETHER THE MONUMENT WAS FOUND OR PLACED.

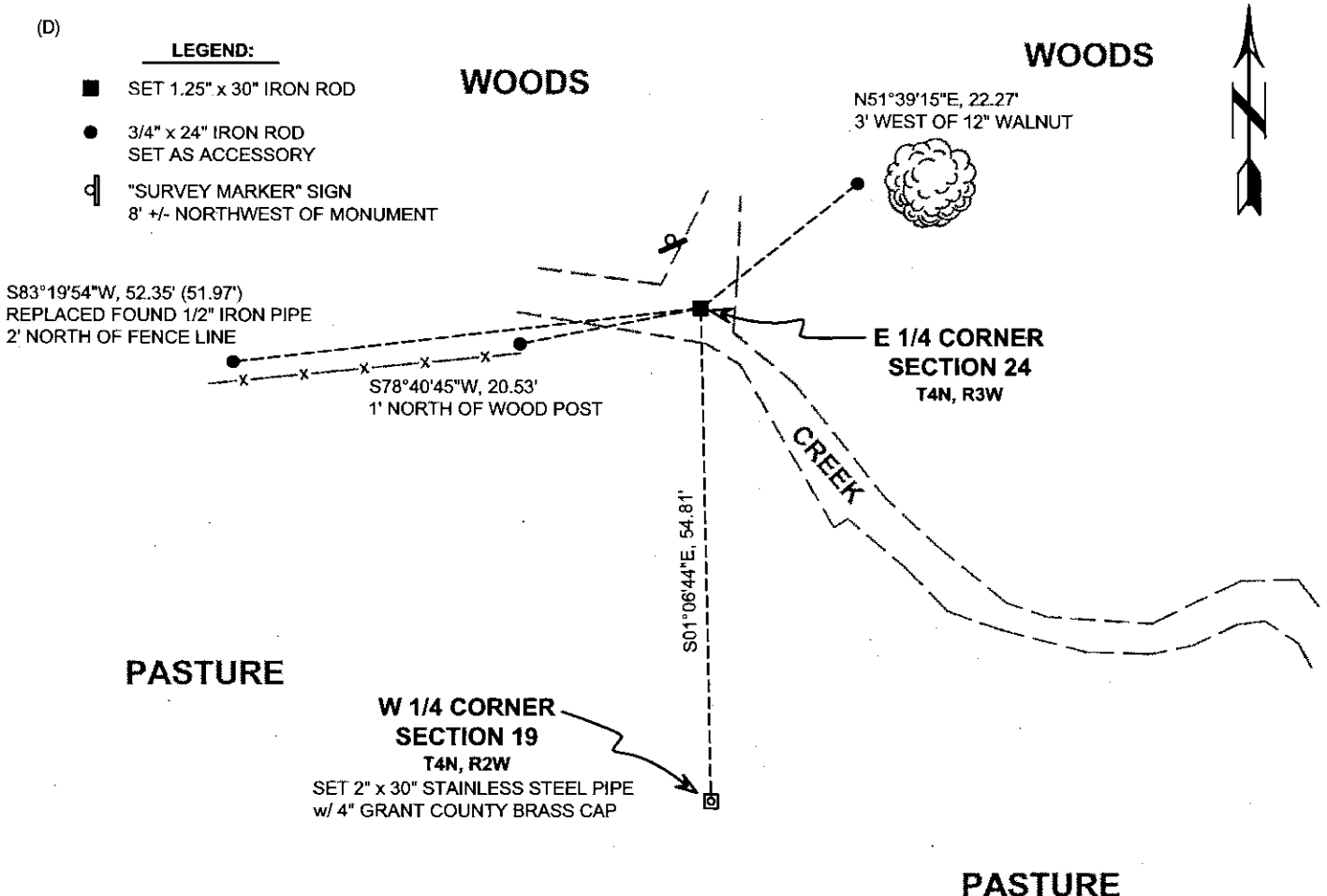
I COULD FIND NO MONUMENTS OR BEARING TREES FROM THE ORIGINAL GOVERNMENT SURVEY. I RECOVERED THE 3/4" x 24" REBAR REFERENCED BY LARRY AUSTIN. THIS PROPORTIONATE LOCATION REASONABLY MATCHES THE ORIGINAL GOVERNMENT TOPOGRAPHIC CALL TO A CREEK 10 LINKS NORTH OF THE CORNER GIVEN REASONABLE ALLOWANCE FOR MOVEMENT OF THE STREAM SINCE THAT TIME. BECAUSE THE CORNER FALLS IN THE CREEK, I REPLACED THE 3/4" REBAR WITH A 1.25" x 30" REBAR AS DEPICTED HEREON.

(C) IN THE PLAN VIEW DRAWING BELOW, PROVIDE REFERENCE TIES TO AT LEAST 4 WITNESS MONUMENTS. WITNESS MONUMENTS SHALL BE MADE OF CONCRETE, NATURAL STONE, IRON, BEARING TREES OR ANY OTHER EQUALLY DURABLE MATERIAL. DEPICT THE RELEVANT MONUMENTS AND REFERENCE TIES WITH SUFFICIENT DETAIL TO ENABLE ACCURATE RELOCATION OF THE CORNER IF THE CORNER MONUMENT IS DISTURBED.

(D)

LEGEND:

- SET 1.25" x 30" IRON ROD
- 3/4" x 24" IRON ROD SET AS ACCESSORY
- "SURVEY MARKER" SIGN 8' +/- NORTHWEST OF MONUMENT



Remonumentation

- (E) DESCRIBE ANY MATERIAL DISCREPANCY BETWEEN THE LOCATION OF THE CORNER AS RESTORED OR REESTABLISHED AND THE LOCATION OF THAT CORNER AS PREVIOUSLY RESTORED OR REESTABLISHED BY DISTANCE AND DIRECTION. SHOW THE DISCREPANCY ON THE PLAN VIEW DRAWING UNDER (D), ABOVE. SHOW THE DISTANCES BETWEEN THE CORNER AS PREVIOUSLY RESTORED OR REESTABLISHED AND (1) THE CORNER AS RESTORED OR REESTABLISHED, AND (2) TO AT LEAST 2 OF THE WITNESS MONUMENTS SHOWN ON THE DRAWING IN (D) ABOVE.

N/A

- (F) WAS THE CORNER RESTORED THROUGH ACCEPTANCE OF (1) AN OBLITERATED EVIDENCE LOCATION, OR (2) A FOUND PERPETUATED LOCATION?

(2) A FOUND PERPETUATED LOCATION.

- (G&H) WAS THE CORNER REESTABLISHED THROUGH LOST CORNER PROPORTIONATE METHODS? IF SO, SHOW THE METHOD, INCLUDING THE DIRECTIONS AND DISTANCES TO OTHER PUBLIC LAND SURVEY CORNERS USED AS EVIDENCE OR USED FOR PROPORTIONING IN DETERMINING THE CORNER LOCATION.

N/A

CORNER HISTORY

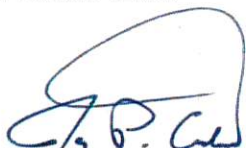
THE ORIGINAL GOVERNMENT CORNER WAS ESTABLISHED BY SYLVESTER SIBLEY IN THE SECOND QUARTER OF 1832.

IN A TIE SHEET DATED 12 JANUARY 1998, LARRY AUSTIN REPORTS SETTING A 0.75" x 24" IRON ROD AT A SINGLE PROPORTIONATE LOCATION.

AUSTIN REPORTS FINDING A 3/4" REBAR IN SUBSEQUENT PLATS OF SURVEY DATED 9 OCTOBER 1999 AND 31 OCTOBER 2003.

AFFIX LAND SURVEYOR SEAL

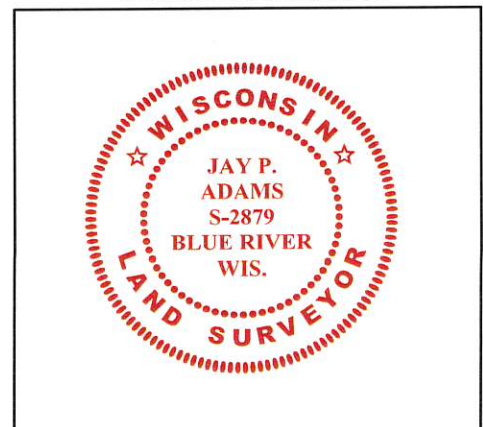
- (I) I, JAY P. ADAMS, P.L.S. - 2879, CERTIFY THAT THE CORNER LOCATION SHOWN ON THIS RECORD WAS DETERMINED BY ME OR UNDER MY DIRECTION AND CONTROL AND THAT THIS U.S. PUBLIC LAND SURVEY MONUMENT RECORD IS CORRECT AND COMPLETE TO THE BEST OF MY KNOWLEDGE AND BELIEF.



27 NOVEMBER 2018

SIGNATURE

DATE

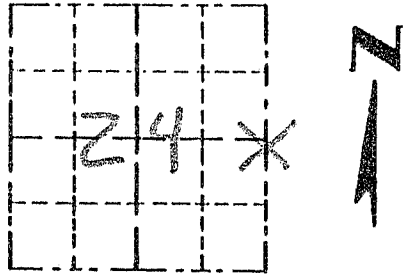


Survey Monument Record

TYPE OF MONUMENT 3/4" X 24" IRON
BAR SET

CORNER NO. 80
SECTION 24
TOWN 4N
RANGE 3W

FIELD BOOK: 97-02
PAGE _____



LOCATION
(Indicated by "X")

BASIS FOR MONUMENT LOCATION

(Use reverse side if necessary)

Show info such as: History of corner, with reference to Vol. and pg, dates, surveyor; exact description of monument replaced; if location computed, by taped or EDM traverse; landowner, remarks, etc.

SEAL:

CORNER SET IN 1832 BY SIBLEY. NO RECORD OF CORNER FOUND SINCE ORIGINAL SURVEY; CORNER LOCATION ESTABLISHED BY PROPORTIONATE METHODS FROM THE NE CORNER AND THE SE CORNER. VERIFIED THIS LOCATION USING EDM METHODS.



CERTIFIED CORRECT

Larry L. Austin
Registered Land Surveyor

DATE: 1-12-98

TIE SKETCH

Show at least three (3) ties and monument

LEGEND

- 3/4" X 24" IRON BAR SET
- 1/2" X 15" IRON BAR SET
- ** EXISTING FENCE

