

GRANT COUNTY U.S. PUBLIC LAND SURVEY MONUMENT RECORD

INSTRUCTIONS: THIS RECORD SHALL SHOW THE LOCATION OF THE CORNER AND SHALL INCLUDE ALL OF THE FOLLOWING ELEMENTS (A THROUGH I).

(A) IDENTIFY THE CORNER AS REFERENCED TO THE U.S. PUBLIC LAND SURVEY SYSTEM

■ = CORNER MONUMENT RESTORED

WITNESSES TO CORNER LOCATION:

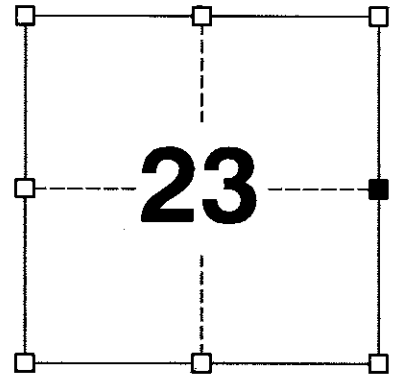
JAY P. ADAMS
BRADLEY R. BOMKAMP

GEOGRAPHIC COORDINATES,
NAD 83 (2011) ADJUSTMENT:

LATITUDE: 42° 48' 21.96646"
LONGITUDE: 90° 41' 00.04297"

WISCONSIN COORDINATE REFERENCE SYSTEM (WISCRS),
GRANT COUNTY, NAD 83 (2011) ADJUSTMENT:

NORTHING: 508,401.78
EASTING: 826,306.79



SECTION 23
TOWNSHIP 4 NORTH, RANGE 3 WEST
TOWN OF SOUTH LANCASTER

(B) DESCRIBE ANY RECORD EVIDENCE, MONUMENT EVIDENCE, OCCUPATIONAL EVIDENCE, TESTIMONIAL EVIDENCE OR ANY OTHER MATERIAL EVIDENCE YOU CONSIDERED, AND WHETHER THE MONUMENT WAS FOUND OR PLACED.

I COULD FIND NO MONUMENTS OR BEARING TREES FROM THE ORIGINAL GOVERNMENT SURVEY. I RECOVERED THE COTTON GIN SPIKE SET BY KREBS AND ACCEPTED THIS LOCATION AS THE BEST AVAILABLE EVIDENCE OF THE ORIGINAL GOVERNMENT CORNER AND THE MONUMENT WAS LEFT IN PLACE BECAUSE OF EXCEPTIONAL STABILITY AND THE AMOUNT OF VEHICULAR TRAFFIC.

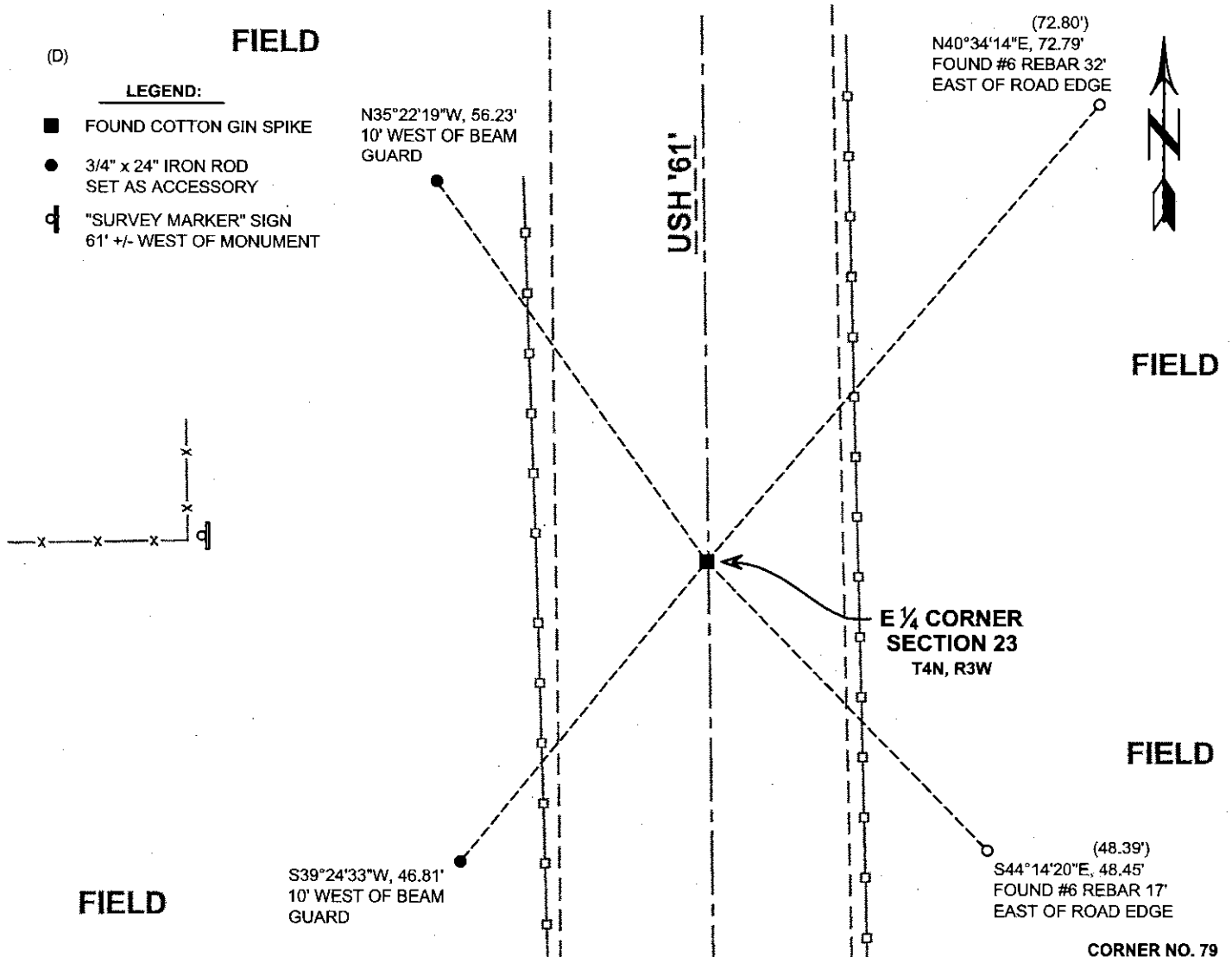
(C) IN THE PLAN VIEW DRAWING BELOW, PROVIDE REFERENCE TIES TO AT LEAST 4 WITNESS MONUMENTS. WITNESS MONUMENTS SHALL BE MADE OF CONCRETE, NATURAL STONE, IRON, BEARING TREES OR ANY OTHER EQUALLY DURABLE MATERIAL. DEPICT THE RELEVANT MONUMENTS AND REFERENCE TIES WITH SUFFICIENT DETAIL TO ENABLE ACCURATE RELOCATION OF THE CORNER IF THE CORNER MONUMENT IS DISTURBED.

(D)

FIELD

LEGEND:

- FOUND COTTON GIN SPIKE
- 3/4" x 24" IRON ROD SET AS ACCESSORY
- ⊕ "SURVEY MARKER" SIGN 61' +/- WEST OF MONUMENT



Remonumentation

- (E) DESCRIBE ANY MATERIAL DISCREPANCY BETWEEN THE LOCATION OF THE CORNER AS RESTORED OR REESTABLISHED AND THE LOCATION OF THAT CORNER AS PREVIOUSLY RESTORED OR REESTABLISHED BY DISTANCE AND DIRECTION. SHOW THE DISCREPANCY ON THE PLAN VIEW DRAWING UNDER (D), ABOVE. SHOW THE DISTANCES BETWEEN THE CORNER AS PREVIOUSLY RESTORED OR REESTABLISHED AND (1) THE CORNER AS RESTORED OR REESTABLISHED, AND (2) TO AT LEAST 2 OF THE WITNESS MONUMENTS SHOWN ON THE DRAWING IN (D) ABOVE.

N/A

- (F) WAS THE CORNER RESTORED THROUGH ACCEPTANCE OF (1) AN OBLITERATED EVIDENCE LOCATION, OR (2) A FOUND PERPETUATED LOCATION?

(2) A FOUND PERPETUATED LOCATION.

- (G&H) WAS THE CORNER REESTABLISHED THROUGH LOST CORNER PROPORTIONATE METHODS? IF SO, SHOW THE METHOD, INCLUDING THE DIRECTIONS AND DISTANCES TO OTHER PUBLIC LAND SURVEY CORNERS USED AS EVIDENCE OR USED FOR PROPORTIONING IN DETERMINING THE CORNER LOCATION.

N/A

CORNER HISTORY

THE ORIGINAL GOVERNMENT CORNER WAS ESTABLISHED BY ROBERT CLARK, JR. IN THE FIRST QUARTER OF 1833.

IN A TIE SHEET DATED 9 MARCH 1988, TIMOTHY MOORE SET A 3/4" x 24" REBAR WITH ALUMINUM CAP JUST BELOW THE ROADWAY SURFACE AT A LOCATION THAT MATCHED AN EAST-WEST FENCE LINE AND ONLINE BETWEEN THE NORTHEAST AND SOUTHEAST CORNERS OF SECTION 23.

THE ALUMINUM MONUMENT WAS RECOVERED BY DAVID BURBACH IN 1996 AND THOMAS BUCK IN 1998.

IN A PLAT OF SURVEY DATED 14 MARCH 2012, AARON AUSTIN REPORTS THAT A COTTON GIN SPIKE IS TO BE SET AT THIS LOCATION.

IN A TIE SHEET DATED 4 APRIL 2012, JOHN KREBS SET A COTTON GIN SPIKE FOLLOWING ROAD CONSTRUCTION USING TWO TIES LEFT FROM MOORE'S TIE SHEET.

IN AN ALTA SURVEY DATED 12 NOVEMBER 2012, JIMMY ROSE REPORTS FINDING THE COTTON GIN SPIKE.

- (I) I, JAY P. ADAMS, P.L.S. - 2879, CERTIFY THAT THE CORNER LOCATION SHOWN ON THIS RECORD WAS DETERMINED BY ME OR UNDER MY DIRECTION AND CONTROL AND THAT THIS U.S. PUBLIC LAND SURVEY MONUMENT RECORD IS CORRECT AND COMPLETE TO THE BEST OF MY KNOWLEDGE AND BELIEF.

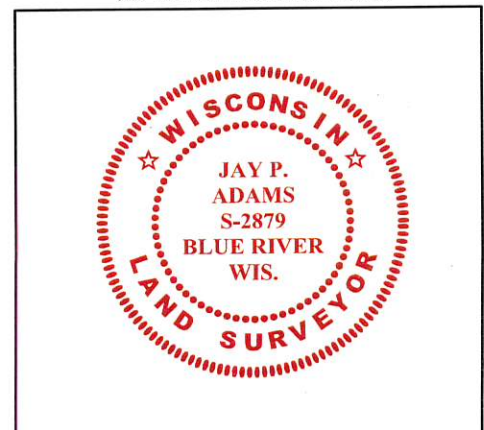


SIGNATURE

20 NOVEMBER 2018

DATE

AFFIX LAND SURVEYOR SEAL



U.S. PUBLIC LAND SURVEY MONUMENT RECORD - GRANT COUNTY, WI

Section 23, Town 4 North, Range 3 West, Town of South Lancaster

(a)

NOTE: This form is intended and designed to fulfill all requirements of Wisconsin Administrative Code Chapter A-E 7.08, U.S. Public Land Survey Monument Record (3) (a) (b) (c) (d) (e) (f) (g) (h) (i). "An additional sheet may be added if necessary to conform with said requirements."

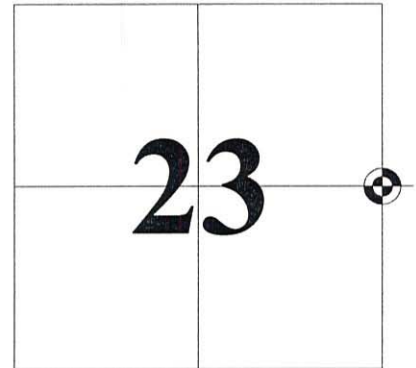
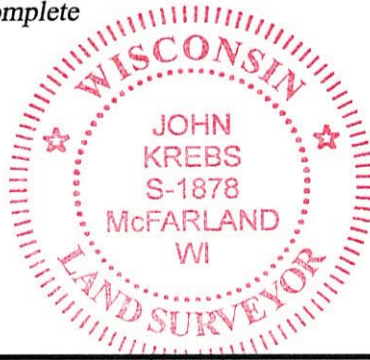
CERTIFICATE:

(i)

I, John Krebs, do hereby certify that the corner location on this record was determined by me and/or under my direct supervision and that this U.S. Public Land Survey Monument Record is correct and complete to the best of my knowledge and belief.

Dated this 4th day of April, 2012.

John Krebs 4-23-12
 John Krebs, S-1878



CORNER LOCATION

HISTORY OF CORNER ESTABLISHMENT:

Timothy J. Moore set a 3/4" rebar with an aluminum cap at the Section corner on March 9, 1988. Michael S. O'Keefe, S-2743, located corner on July 6, 2011, before road construction began.

DESCRIPTION OF CORNER EVIDENCE FOUND:

(b) (f) (g) (h)

Corner was removed during construction. Replaced corner per location by Michael S. O'Keefe. Found 2 ties per tie sheet by Tomothy J. Moore, S-1830, dated March 9, 1988. I set a cotton pin at the Section corner and another tie and found two additional ties as shown hereon.

Witnesses to corner location _____

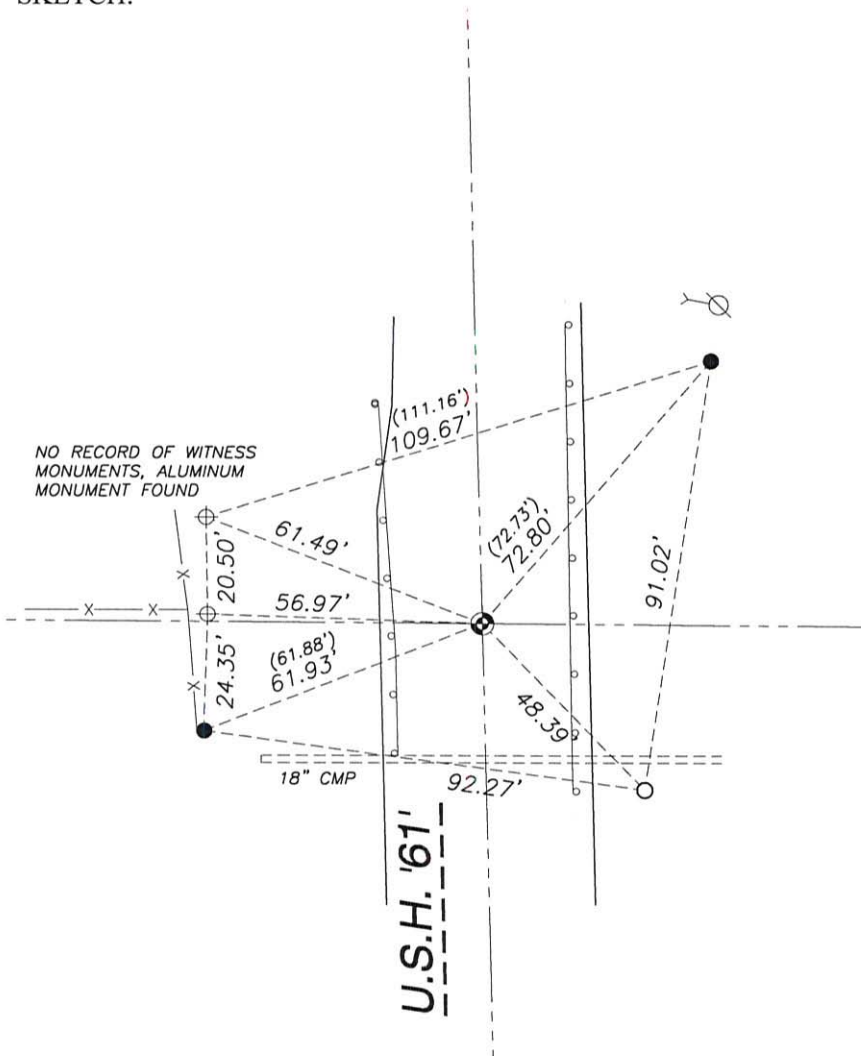
DESCRIPTION OF CORNER AND WITNESS MONUMENTS: references and accessories used to perpetuate the original or re-established location of this corner.

(c) (d) (e)

SKETCH:

LEGEND

- GOVERNMENT CORNER
- WITNESS MONUMENT FOUND
- 3/4" REBAR FOUND
- 3/4" x 24" REBAR SET (1.50 LBS/LF)
- POWER POLE W/GUY
- SECTION LINE
- EDGE OF PAVEMENT
- FENCE LINE
- GUARD OR SAFETY RAIL



SCALE: 1" = 40'

SHEET 1 OF 1

79

J:\2011\114660\dwg\11-4660 WisDOT Dickeyville.dwg

JSD Professional Services, Inc.
 • Engineers • Surveyors • Planners

161 HORIZON DRIVE, SUITE 101
 VERONA, WISCONSIN 53593
 PHONE: (608)-848-5060

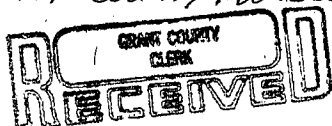
U. S. PUBLIC LAND SURVEY MONUMENT RECORD

INSTRUCTIONS: This record shall show the location of the corner and shall include all of the following nine elements (a through i).

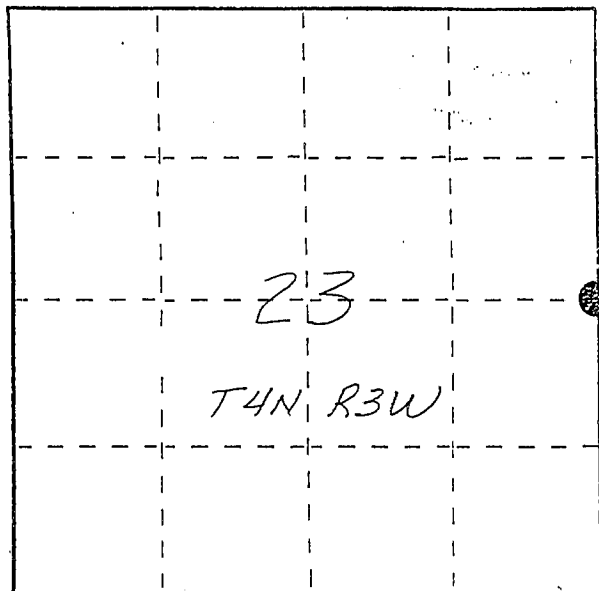
(a) Identify the corner by reference to the U.S. public land survey system.

● = Corner monument restored.

E 1/4 corner section 23
T4N R3W of the
4th P.M.
Town of South Lancaster
Grant County, Wisconsin.



APR 27 1988

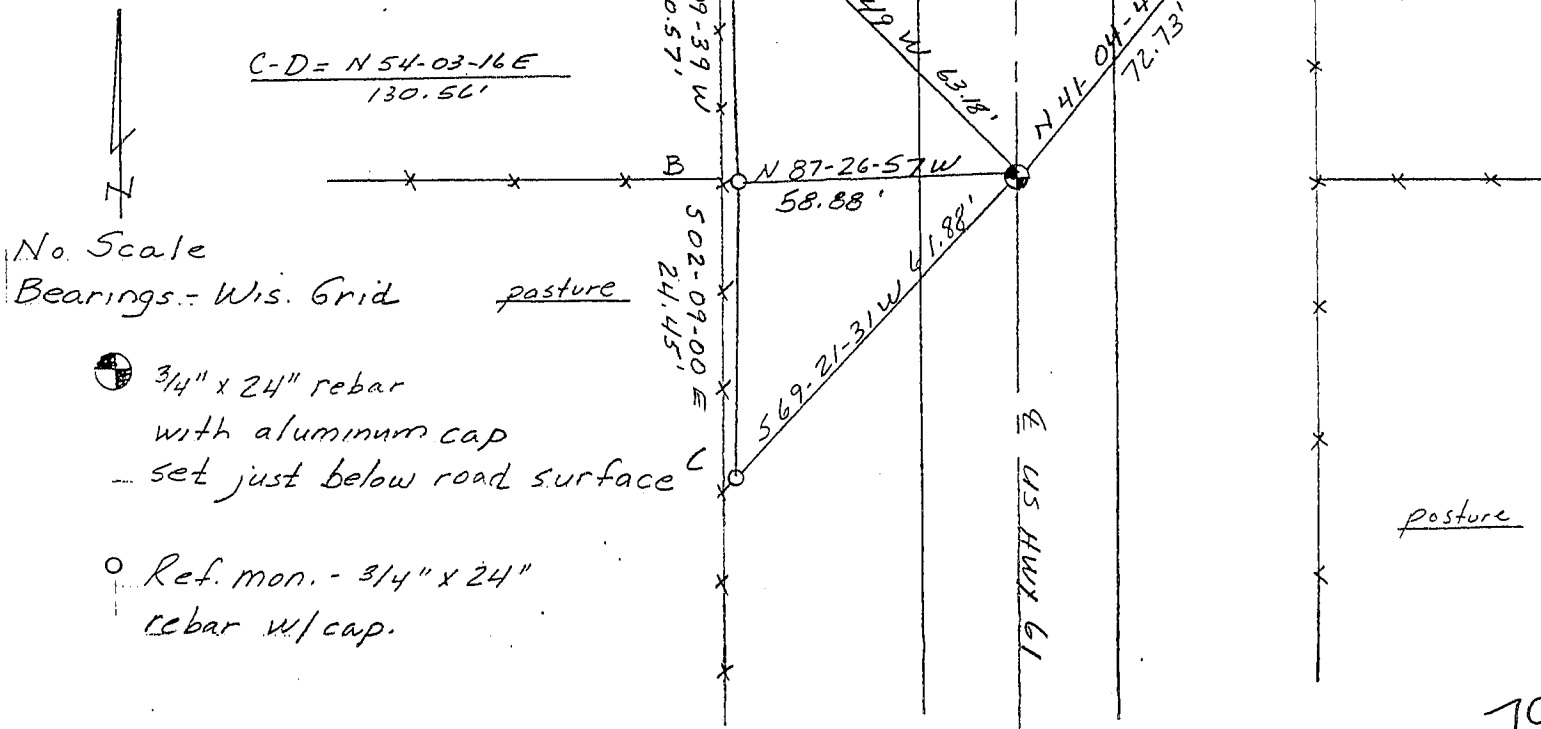


(b) Describe any record evidence, monument evidence, occupational evidence, testimonial evidence or any other material evidence you considered, and whether the monument was found or placed.

Monument was set at existing east-west fence line intersection and on line with the reestablished SE and NE corners of section 23. Corner also falls on the E of U.S. Hwy 61 as shown on the 1935 hwy R/W plat. No other evidence was found. Due to planned construction a Berntsen monument was not set.

(c) In the plan view drawing below, provide reference ties to at least 4 witness monuments, or, if the location is within a municipality, to at least 2 witness monuments. (Witness monuments shall be made of concrete, natural stone, iron or other equally durable material, ~~except~~ wood.) Describe witness monuments.

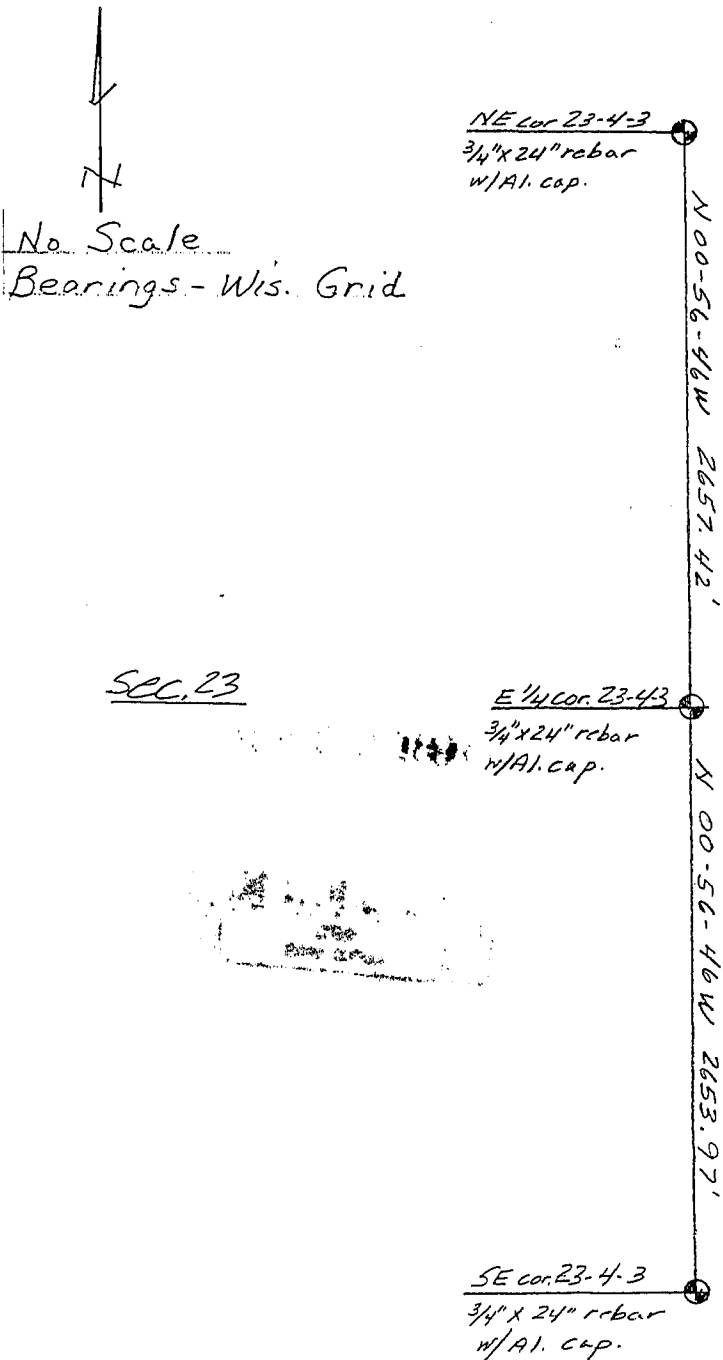
(d) Show a plan view drawing depicting the relevant monuments and reference ties which is sufficient in detail to enable accurate relocation of the corner monument if the corner monument is disturbed. Indicate north.



(e) Describe any material discrepancy between the location of the corner as restored or reestablished and the location of that corner as previously restored or reestablished by distance and direction. Show the discrepancy on the plan view drawing under (d), above. Show the distances between the corner as previously restored or reestablished and (1) the corner as restored or reestablished, and (2) to at least 2 of the witness monuments shown on the drawing in (d), above.

(f) Was the corner restored through acceptance of (1) an obliterated evidence location, or, (2) a found perpetuated location?

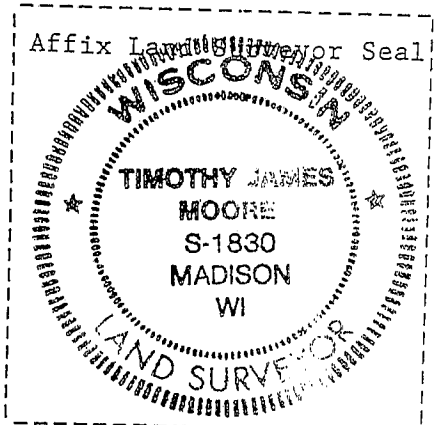
(g&h) Was the corner reestablished through lost corner proportionate methods? If so, show the method, including the directions and distances to other public land survey corners used as evidence or used for proportioning in determining the corner location?



No Scale
Bearings - Wis. Grid

Sec. 23

Sec. 24



(i) I, Timothy J. Moore
(type or print name) certify that the corner location shown on this record was determined by me or under my direction and control and that this U.S. Public Land Survey Monument Record is correct and complete to the best of my knowledge and belief.

Timothy J. Moore 3-9-88
Signature Date