

## GRANT COUNTY U.S. PUBLIC LAND SURVEY MONUMENT RECORD

INSTRUCTIONS: THIS RECORD SHALL SHOW THE LOCATION OF THE CORNER AND SHALL INCLUDE ALL OF THE FOLLOWING ELEMENTS (A THROUGH I).

(A) IDENTIFY THE CORNER AS REFERENCED TO THE U.S. PUBLIC LAND SURVEY SYSTEM

■ = CORNER MONUMENT RESTORED

WITNESSES TO CORNER LOCATION:

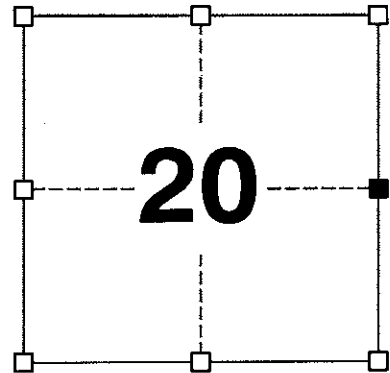
**JAY P. ADAMS**  
**PAIGE O. JELINEK**

GEOGRAPHIC COORDINATES,  
NAD 83 (2011) ADJUSTMENT:

**LATITUDE:** 42° 48' 22.53716"  
**LONGITUDE:** 90° 44' 32.11242"

WISCONSIN COORDINATE REFERENCE SYSTEM (WISCRS),  
GRANT COUNTY, NAD 83 (2011) ADJUSTMENT:

**NORTHING:** 508,443.21  
**EASTING:** 810,497.48



**SECTION 20**  
TOWNSHIP 4 NORTH, RANGE 3 WEST  
TOWN OF SOUTH LANCASTER

(B) DESCRIBE ANY RECORD EVIDENCE, MONUMENT EVIDENCE, OCCUPATIONAL EVIDENCE, TESTIMONIAL EVIDENCE OR ANY OTHER MATERIAL EVIDENCE YOU CONSIDERED, AND WHETHER THE MONUMENT WAS FOUND OR PLACED.

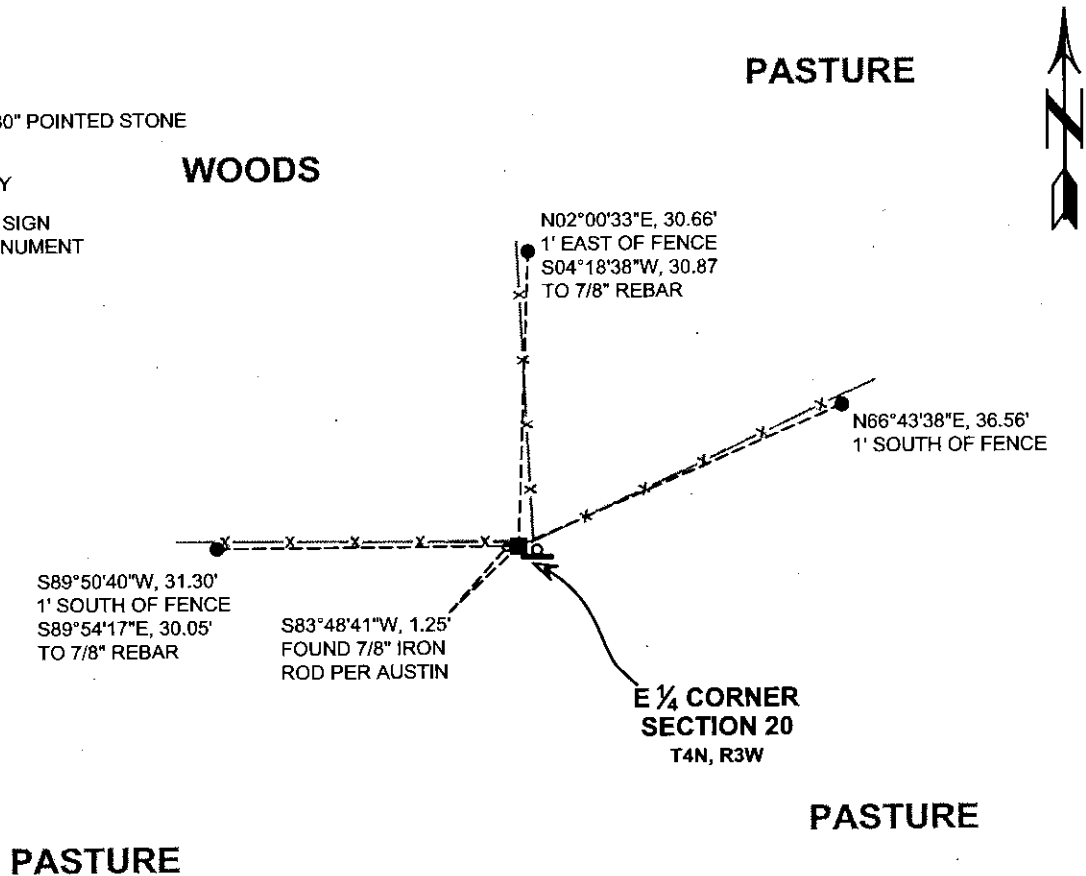
I COULD FIND NO MONUMENTS OR BEARING TREES FROM THE ORIGINAL GOVERNMENT SURVEY. I RECOVERED THE 7/8" REBAR NOTED BY AUSTIN. I ALSO RECOVERED A 3.5" x 12" x 30" POINTED STONE TIPPED DOWNHILL 1.5' SOUTHWEST OF A LONG-STANDING FENCE CORNER. GIVEN THE HISTORY OF WILTSE AND BARBER BEING AT THE CORNER AND THE PREVALENCE OF OTHER STONES IN THE AREA, I ACCEPTED THIS STONE MONUMENT AS THE BEST AVAILABLE EVIDENCE OF THE CORNER. THE STONE WAS RESET VERTICALLY AND REMONUMENTED AS DEPICTED HEREON.

(C) IN THE PLAN VIEW DRAWING BELOW, PROVIDE REFERENCE TIES TO AT LEAST 4 WITNESS MONUMENTS. WITNESS MONUMENTS SHALL BE MADE OF CONCRETE, NATURAL STONE, IRON, BEARING TREES OR ANY OTHER EQUALLY DURABLE MATERIAL. DEPICT THE RELEVANT MONUMENTS AND REFERENCE TIES WITH SUFFICIENT DETAIL TO ENABLE ACCURATE RELOCATION OF THE CORNER IF THE CORNER MONUMENT IS DISTURBED.

(D)

**LEGEND:**

- FOUND 3.5" x 12" x 30" POINTED STONE
- 3/4" x 24" IRON ROD SET AS ACCESSORY
- d "SURVEY MARKER" SIGN 0.5' +/- EAST OF MONUMENT



# Remonumentation

- (E) DESCRIBE ANY MATERIAL DISCREPANCY BETWEEN THE LOCATION OF THE CORNER AS RESTORED OR REESTABLISHED AND THE LOCATION OF THAT CORNER AS PREVIOUSLY RESTORED OR REESTABLISHED BY DISTANCE AND DIRECTION. SHOW THE DISCREPANCY ON THE PLAN VIEW DRAWING UNDER (D), ABOVE. SHOW THE DISTANCES BETWEEN THE CORNER AS PREVIOUSLY RESTORED OR REESTABLISHED AND (1) THE CORNER AS RESTORED OR REESTABLISHED, AND (2) TO AT LEAST 2 OF THE WITNESS MONUMENTS SHOWN ON THE DRAWING IN (D) ABOVE.

**THIS CORNER HAS PREVIOUSLY BEEN REMONUMENTED WITH A 7/8" x 24" REBAR. I RECOVERED A 3.5" x 12" x 30" POINTED STONE TIPPED DOWNHILL 1.5' SOUTHWEST OF A LONG-STANDING FENCE CORNER. THE STONE WAS ACCEPTED AS THE BEST AVAILABLE EVIDENCE OF THE CORNER. I RESET THE STONE VERTICALLY AND TIED IT TO WITNESS MONUMENTS AS DEPICTED IN SECTION (D) OF THIS MONUMENT RECORD.**

- (F) WAS THE CORNER RESTORED THROUGH ACCEPTANCE OF (1) AN OBLITERATED EVIDENCE LOCATION, OR (2) A FOUND PERPETUATED LOCATION?

**(2) A FOUND PERPETUATED LOCATION.**

- (G&H) WAS THE CORNER REESTABLISHED THROUGH LOST CORNER PROPORTIONATE METHODS? IF SO, SHOW THE METHOD, INCLUDING THE DIRECTIONS AND DISTANCES TO OTHER PUBLIC LAND SURVEY CORNERS USED AS EVIDENCE OR USED FOR PROPORTIONING IN DETERMINING THE CORNER LOCATION.

**N/A**

#### CORNER HISTORY

**THE ORIGINAL GOVERNMENT CORNER WAS ESTABLISHED BY ROBERT CLARK, JR. IN THE FIRST QUARTER OF 1833.**

**IN A FOUR SURVEYS DATED FEBRUARY 1844, WILTSE WAS AT THIS CORNER.**

**IN A SURVEY DATED 1 DECEMBER 1878, JOEL BARBER FOUND BOTH ORIGINAL BEARING TREES.**

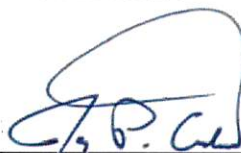
**IN A TIE SHEET DATED 22 NOVEMBER 1990, LARRY AUSTIN SET A 7/8" x 24" REBAR AT AN OCCUPIED LOCATION.**

**LARRY AUSTIN HAS USED THE 7/8" REBAR IN A PLAT OF SURVEY DATED 20 NOVEMBER 1990 AND CERTIFIED SURVEY MAPS DATED 17 APRIL 2000 AND 15 MAY 2003.**



AFFIX LAND SURVEYOR SEAL

- (I) I, JAY P. ADAMS, P.L.S. - 2879, CERTIFY THAT THE CORNER LOCATION SHOWN ON THIS RECORD WAS DETERMINED BY ME OR UNDER MY DIRECTION AND CONTROL AND THAT THIS U.S. PUBLIC LAND SURVEY MONUMENT RECORD IS CORRECT AND COMPLETE TO THE BEST OF MY KNOWLEDGE AND BELIEF.

  
SIGNATURE

**19 NOVEMBER 2018**

DATE

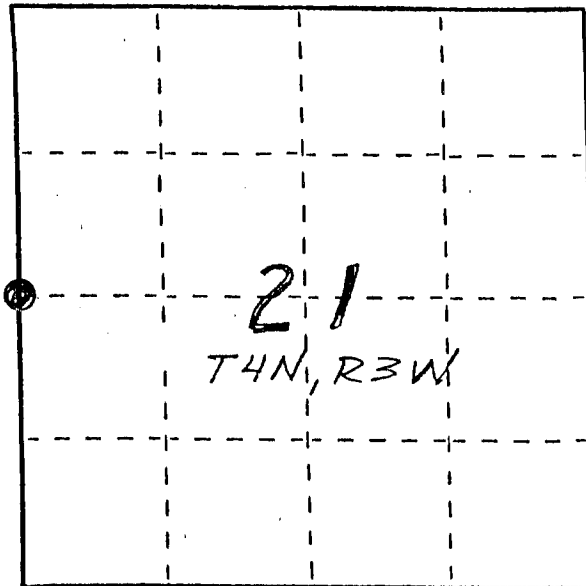


# U. S. PUBLIC LAND SURVEY MONUMENT RECORD

**INSTRUCTIONS:** This record shall show the location of the corner and shall include all of the following nine elements (a through i).

- (a) Identify the corner by reference to the U.S. public land survey system.  
 O = Corner monument restored.

WEST 1/4 CORNER,  
SEC 21, T4N, R3W  
GRANT CO., WI

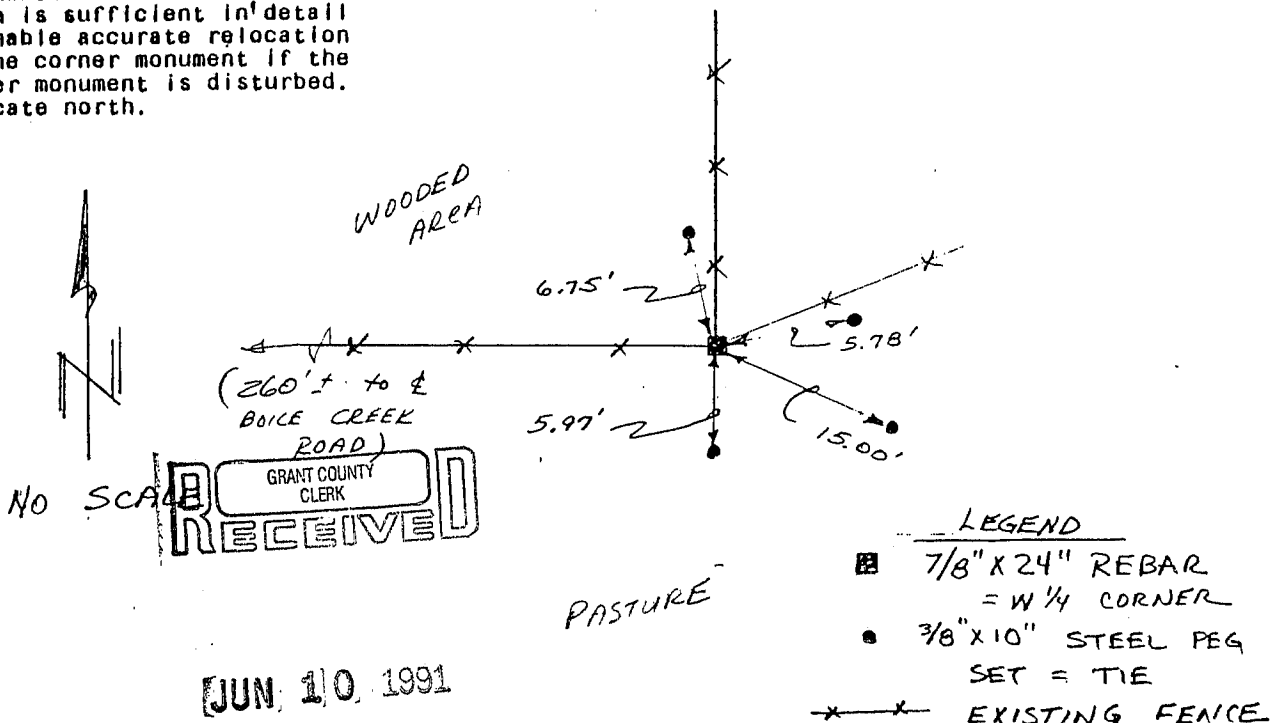


- (b) Describe any record evidence, monument evidence, occupational evidence, testimonial evidence or any other material evidence you considered, and whether the monument was found or placed.

MONUMENT WAS PLACED BASED ON OCCUPATIONAL EVIDENCE AT FENCE INTERSECTION & VERIFIED BY EDM TRAVERSE

- (c) In the plan view drawing below, provide reference ties to at least 4 witness monuments, or, if the location is within a municipality, to at least 2 witness monuments. (Witness monuments shall be made of concrete, natural stone, iron or other equally durable material, ~~except~~ wood.) Describe witness monuments.

- (d) Show a plan view drawing depicting the relevant monuments and reference ties which is sufficient in detail to enable accurate relocation of the corner monument if the corner monument is disturbed. Indicate north.



JUN 10 1991

NO SCALE RECEIVED GRANT COUNTY CLERK

76

(e) Describe any material discrepancy between the location of the corner as restored or reestablished and the location of that corner as previously restored or reestablished by distance and direction. Show the discrepancy on the plan view drawing under (d), above. Show the distances between the corner as previously restored or reestablished and (1) the corner as restored or reestablished, and (2) to at least 2 of the witness monuments shown on the drawing in (d), above.

NONE

(f) Was the corner restored through acceptance of (1) an obliterated evidence location, or, (2) a found perpetuated location?

(2) FOUND PERPETUATED LOCATION

(g&h) Was the corner reestablished through lost corner proportionate methods? If so, show the method, including the directions and distances to other public land survey corners used as evidence or used for proportioning in determining the corner location?

NO

(1) I, LARRY L. AUSTIN  
(type or print name) certify that the corner shown on this record was determined by me or under my direction and control and that this U.S. Public Land Survey Monument Record is correct and complete to the best of my knowledge and belief.

*Larry L. Austin*

11/22/90

