

GRANT COUNTY U.S. PUBLIC LAND SURVEY MONUMENT RECORD

INSTRUCTIONS: THIS RECORD SHALL SHOW THE LOCATION OF THE CORNER AND SHALL INCLUDE ALL OF THE FOLLOWING ELEMENTS (A THROUGH I).

(A) IDENTIFY THE CORNER AS REFERENCED TO THE U.S. PUBLIC LAND SURVEY SYSTEM

■ = CORNER MONUMENT RESTORED

WITNESSES TO CORNER LOCATION:

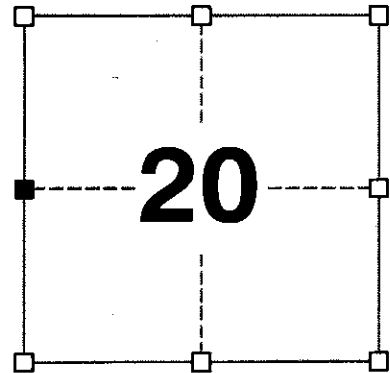
JAY P. ADAMS
STEVE A. ALT

GEOGRAPHIC COORDINATES,
NAD 83 (2011) ADJUSTMENT:

LATITUDE: 42° 48' 23.43248"
LONGITUDE: 90° 45' 43.40381"

WISCONSIN COORDINATE REFERENCE SYSTEM (WISCRS),
GRANT COUNTY, NAD 83 (2011) ADJUSTMENT:

NORTHING: 508,530.84
EASTING: 805,182.85



SECTION 20
TOWNSHIP 4 NORTH, RANGE 3 WEST
TOWN OF SOUTH LANCASTER

(B) DESCRIBE ANY RECORD EVIDENCE, MONUMENT EVIDENCE, OCCUPATIONAL EVIDENCE, TESTIMONIAL EVIDENCE OR ANY OTHER MATERIAL EVIDENCE YOU CONSIDERED, AND WHETHER THE MONUMENT WAS FOUND OR PLACED.

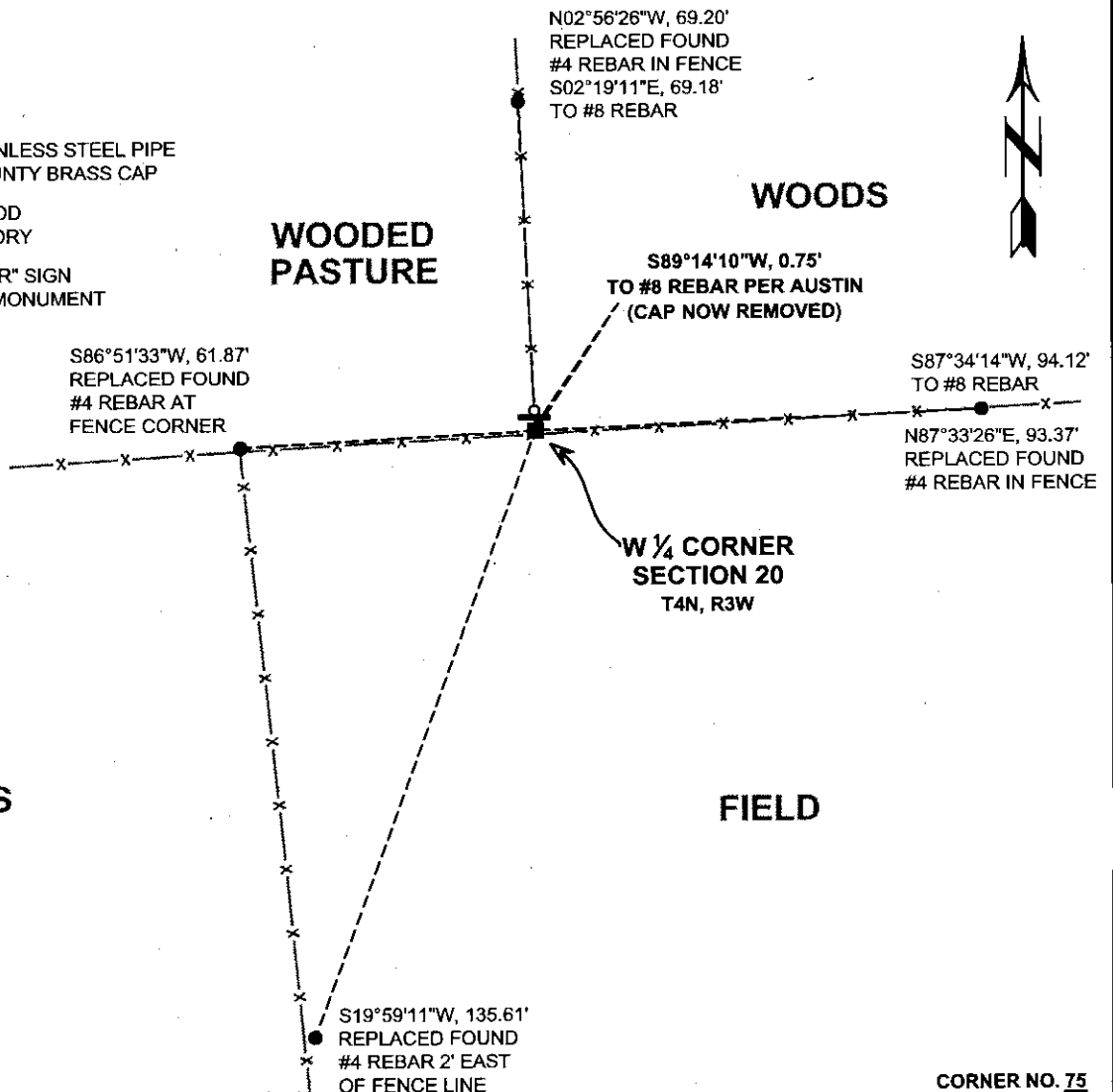
I COULD FIND NO MONUMENTS OR BEARING TREES FROM THE ORIGINAL GOVERNMENT SURVEY, HOWEVER AFTER EXCAVATING AROUND THE FENCE CORNER, I RECOVERED A 6" x 6" x 11" PYRAMIDAL STONE 1' SOUTH-SOUTHEAST OF THE FENCE CORNER AND 0.75' EAST OF THE REBAR AND ALUMINUM CAP SET BY AUSTIN. I ACCEPTED THIS STONE AS THE BEST AVAILABLE EVIDENCE OF THE ORIGINAL GOVERNMENT CORNER. I SET A 2" x 30" STAINLESS STEEL PIPE WITH A 4" BRASS CAP IN PLACE OF THE STONE AND RELOCATED THE STONE 1' SOUTH OF THE BRASS CAP FOR REFERENCE. I ALSO REMOVED THE ALUMINUM CAP FROM THE REBAR SET BY AUSTIN.

(C) IN THE PLAN VIEW DRAWING BELOW, PROVIDE REFERENCE TIES TO AT LEAST 4 WITNESS MONUMENTS. WITNESS MONUMENTS SHALL BE MADE OF CONCRETE, NATURAL STONE, IRON, BEARING TREES OR ANY OTHER EQUALLY DURABLE MATERIAL. DEPICT THE RELEVANT MONUMENTS AND REFERENCE TIES WITH SUFFICIENT DETAIL TO ENABLE ACCURATE RELOCATION OF THE CORNER IF THE CORNER MONUMENT IS DISTURBED.

(D)

LEGEND:

- SET 2" x 30" STAINLESS STEEL PIPE w/ 4" GRANT COUNTY BRASS CAP
- 3/4" x 24" IRON ROD SET AS ACCESSORY
- ⊓ "SURVEY MARKER" SIGN 1' +/- NORTH OF MONUMENT



Remonumentation

(E) DESCRIBE ANY MATERIAL DISCREPANCY BETWEEN THE LOCATION OF THE CORNER AS RESTORED OR REESTABLISHED AND THE LOCATION OF THAT CORNER AS PREVIOUSLY RESTORED OR REESTABLISHED BY DISTANCE AND DIRECTION. SHOW THE DISCREPANCY ON THE PLAN VIEW DRAWING UNDER (D), ABOVE. SHOW THE DISTANCES BETWEEN THE CORNER AS PREVIOUSLY RESTORED OR REESTABLISHED AND (1) THE CORNER AS RESTORED OR REESTABLISHED, AND (2) TO AT LEAST 2 OF THE WITNESS MONUMENTS SHOWN ON THE DRAWING IN (D) ABOVE.

THIS CORNER HAS PREVIOUSLY BEEN REMONUMENTED WITH A #8 REBAR WITH A GRANT COUNTY ALUMINUM CAP. I DID NOT ACCEPT THIS LOCATION AS I RECOVERED A 6" x 6" x 11" PYRAMIDAL STONE MONUMENT SET AT A 3-WAY FENCE CORNER I BELIEVE TO BE BETTER EVIDENCE OF THE ORIGINAL GOVERNMENT CORNER.

(F) WAS THE CORNER RESTORED THROUGH ACCEPTANCE OF (1) AN OBLITERATED EVIDENCE LOCATION, OR (2) A FOUND PERPETUATED LOCATION?

(2) A FOUND PERPETUATED LOCATION

(G&H) WAS THE CORNER REESTABLISHED THROUGH LOST CORNER PROPORTIONATE METHODS? IF SO, SHOW THE METHOD, INCLUDING THE DIRECTIONS AND DISTANCES TO OTHER PUBLIC LAND SURVEY CORNERS USED AS EVIDENCE OR USED FOR PROPORTIONING IN DETERMINING THE CORNER LOCATION.

N/A

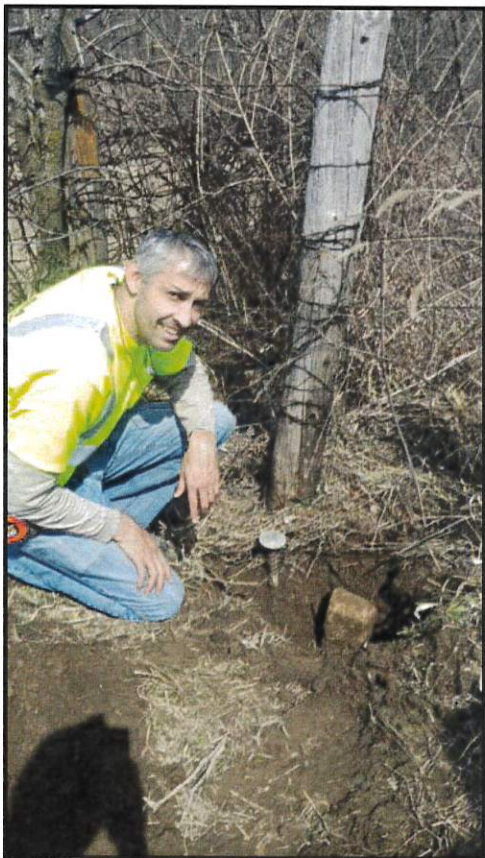
CORNER HISTORY

THE ORIGINAL GOVERNMENT CORNER WAS SET BY ROBERT CLARK, JR IN THE FIRST QUARTER OF 1833.

IN A FOUR SEPARATE SURVEYS IN FEBRUARY AND MARCH 1844, WILTSE WAS AT THIS CORNER.

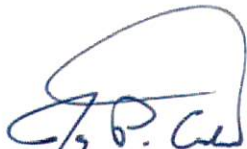
IN A SURVEY DATED 10 AUGUST 1848, STUNTZ WAS AT THIS CORNER.

IN A PLAT OF SURVEY DATED 17 APRIL 2000 AND SUBSEQUENT TIE SHEET, LARRY AUSTIN SET A #8 x 30" REBAR WITH A GRANT COUNTY ALUMINUM CAP AT A 3-WAY FENCE CORNER. AUSTIN RECOVERED THIS MONUMENT IN A PLAT OF SURVEY DATED 25 OCTOBER 2004.



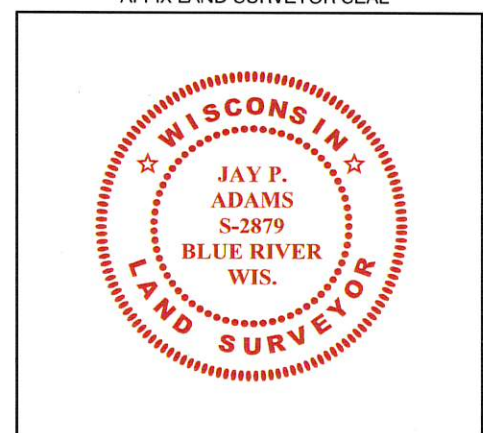
AFFIX LAND SURVEYOR SEAL

(I) I, JAY P. ADAMS, P.L.S. - 2879, CERTIFY THAT THE CORNER LOCATION SHOWN ON THIS RECORD WAS DETERMINED BY ME OR UNDER MY DIRECTION AND CONTROL AND THAT THIS U.S. PUBLIC LAND SURVEY MONUMENT RECORD IS CORRECT AND COMPLETE TO THE BEST OF MY KNOWLEDGE AND BELIEF.


SIGNATURE

19 NOVEMBER 2018

DATE



GRANT COUNTY CERTIFIED LAND CORNER

CORNER NUMBER 75

CERTIFICATE:

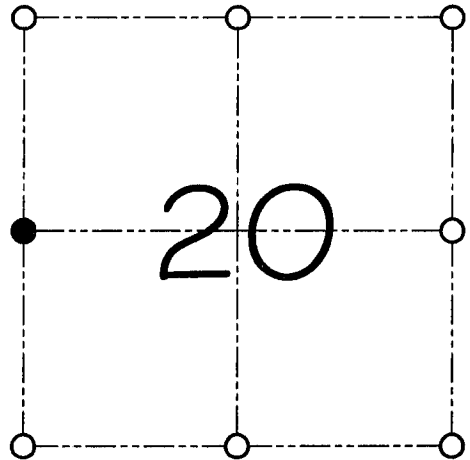
I, Larry L. Austin, do hereby certify that on the 5th day of May, 2000, I found evidence of the West 1/4 corner of Section 20, Town 4 North, Range 3 West, of the 4th Principal Meridian, and I re-established said corner according to the Wisconsin statutes as shown and described hereon.

Dated this 12th day of May, 2000

Larry L. Austin
 Larry L. Austin S-1903



SEAL



● = CORNER LOCATION

WEST 1/4 CORNER OF
SECTION 20, T 4 N R 3 W
TOWN OF SOUTH LANCASTER

HISTORY OF ORIGINAL CORNER ESTABLISHMENT:

Corner was originally set in 1833 by Robert Clark

DESCRIPTION OF CORNER EVIDENCE FOUND:

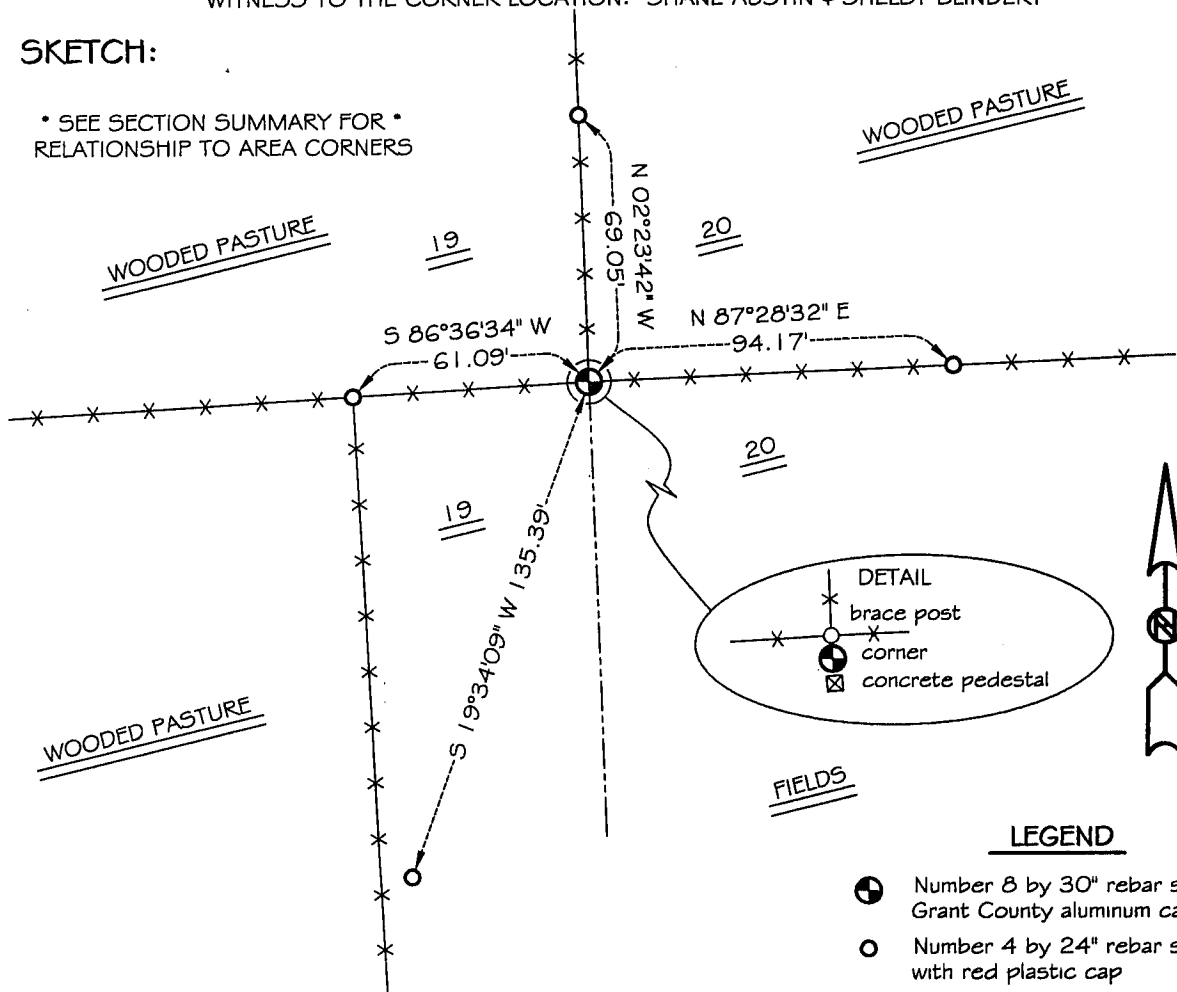
I found an existing fence corner and accepted it's location after an E.D.M. & G.P.S. traverse of the area.

DESCRIPTION OF CORNER AND WITNESS MONUMENTS, references and accessories used to perpetuate the original or re-established location of this corner

WITNESS TO THE CORNER LOCATION: SHANE AUSTIN & SHELBY BLINDERT

SKETCH:

• SEE SECTION SUMMARY FOR •
RELATIONSHIP TO AREA CORNERS



LEGEND

- Number 8 by 30" rebar set with Grant County aluminum cap
- Number 4 by 24" rebar set with red plastic cap
- X— Existing fence location