

REMON 43072

## GRANT COUNTY U.S. PUBLIC LAND SURVEY MONUMENT RECORD

INSTRUCTIONS: THIS RECORD SHALL SHOW THE LOCATION OF THE CORNER AND SHALL INCLUDE ALL OF THE FOLLOWING ELEMENTS (A THROUGH I).

(A) IDENTIFY THE CORNER AS REFERENCED TO THE U.S. PUBLIC LAND SURVEY SYSTEM

■ = CORNER MONUMENT RESTORED

WITNESSES TO CORNER LOCATION:

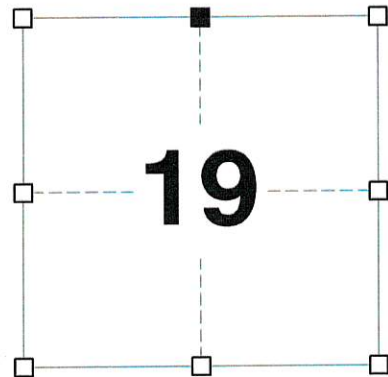
JAY P. ADAMS  
STEVEN A. ALT  
TYLER D. ATKINSON

GEOGRAPHIC COORDINATES,  
NAD 83 (2011) ADJUSTMENT:

LATITUDE: 42° 48' 49.90884"  
LONGITUDE: 90° 46' 19.63813"

WISCONSIN COORDINATE REFERENCE SYSTEM (WISCRS),  
GRANT COUNTY, NAD 83 (2011) ADJUSTMENT:

NORTHING: 511,210.35  
EASTING: 802,480.80



SECTION 19  
TOWNSHIP 4 NORTH, RANGE 3 WEST  
TOWN OF SOUTH LANCASTER

(B) DESCRIBE ANY RECORD EVIDENCE, MONUMENT EVIDENCE, OCCUPATIONAL EVIDENCE, TESTIMONIAL EVIDENCE OR ANY OTHER MATERIAL EVIDENCE YOU CONSIDERED, AND WHETHER THE MONUMENT WAS FOUND OR PLACED.

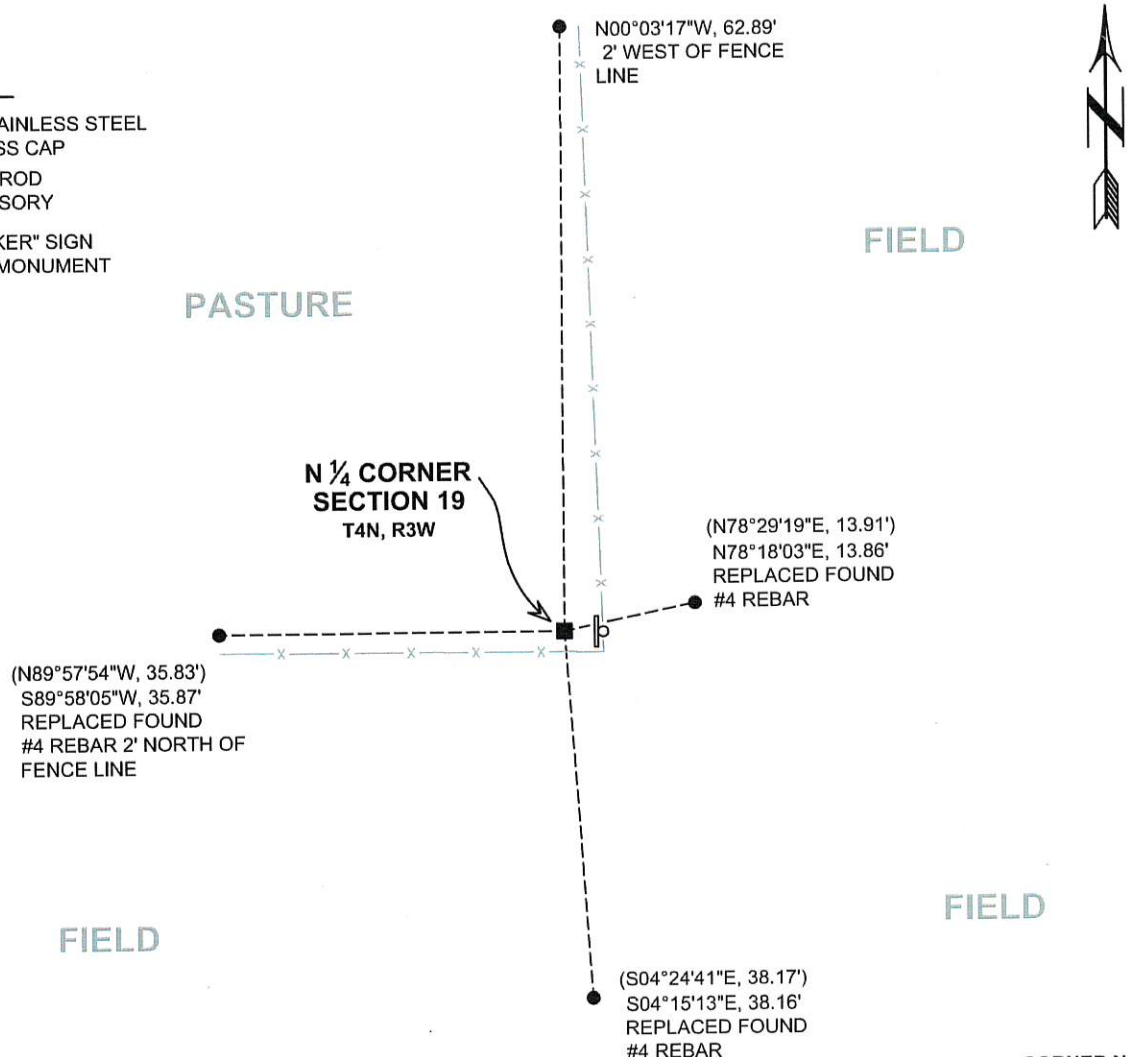
I COULD FIND NO MONUMENTS OR BEARING TREES FROM THE ORIGINAL GOVERNMENT SURVEY OR THE HISTORIC COUNTY SURVEYOR'S SUBSEQUENT RESURVEYS. I RECOVERED THE #8 REBAR WITH GRANT COUNTY ALUMINUM CAP SET BY AARON AUSTIN AND ACCEPTED ITS LOCATION AS THE BEST AVAILABLE EVIDENCE OF THE ORIGINAL GOVERNMENT CORNER. I REMONUMENTED THE CORNER WITH A 2" x 30" STAINLESS STEEL PIPE WITH A 4" GRANT COUNTY BRASS CAP AS DEPICTED BELOW.

(C) IN THE PLAN VIEW DRAWING BELOW, PROVIDE REFERENCE TIES TO AT LEAST 4 WITNESS MONUMENTS. WITNESS MONUMENTS SHALL BE MADE OF CONCRETE, NATURAL STONE, IRON, BEARING TREES OR ANY OTHER EQUALLY DURABLE MATERIAL. DEPICT THE RELEVANT MONUMENTS AND REFERENCE TIES WITH SUFFICIENT DETAIL TO ENABLE ACCURATE RELOCATION OF THE CORNER IF THE CORNER MONUMENT IS DISTURBED.

(D)

**LEGEND:**

- SET 2" x 30" STAINLESS STEEL PIPE w/ 4" BRASS CAP
- 3/4" x 24" IRON ROD SET AS ACCESSORY
- ⊓ "SURVEY MARKER" SIGN 4' +/- EAST OF MONUMENT



(E) DESCRIBE ANY MATERIAL DISCREPANCY BETWEEN THE LOCATION OF THE CORNER AS RESTORED OR REESTABLISHED AND THE LOCATION OF THAT CORNER AS PREVIOUSLY RESTORED OR REESTABLISHED BY DISTANCE AND DIRECTION. SHOW THE DISCREPANCY ON THE PLAN VIEW DRAWING UNDER (D), ABOVE. SHOW THE DISTANCES BETWEEN THE CORNER AS PREVIOUSLY RESTORED OR REESTABLISHED AND (1) THE CORNER AS RESTORED OR REESTABLISHED, AND (2) TO AT LEAST 2 OF THE WITNESS MONUMENTS SHOWN ON THE DRAWING IN (D) ABOVE.

N/A

(F) WAS THE CORNER RESTORED THROUGH ACCEPTANCE OF (1) AN OBLITERATED EVIDENCE LOCATION, OR (2) A FOUND PERPETUATED LOCATION?

(2) A FOUND PERPETUATED LOCATION.

(G&H) WAS THE CORNER REESTABLISHED THROUGH LOST CORNER PROPORTIONATE METHODS? IF SO, SHOW THE METHOD, INCLUDING THE DIRECTIONS AND DISTANCES TO OTHER PUBLIC LAND SURVEY CORNERS USED AS EVIDENCE OR USED FOR PROPORTIONING IN DETERMINING THE CORNER LOCATION.

N/A

CORNER HISTORY

THE ORIGINAL GOVERNMENT CORNER WAS ESTABLISHED BY ROBERT CLARK JR. IN THE FIRST QUARTER OF 1833.

IN THREE SURVEYS IN 1844, WILTSE VISITED THE CORNER.

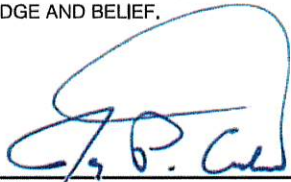
IN A TIE SHEET DATED 14 DECEMBER 2004, LARRY AUSTIN SET A #8 x 30" REBAR WITH A GRANT COUNTY ALUMINUM CAP AT AN OCCUPIED LOCATION.

IN NUMEROUS SURVEYS SINCE THAT TIME, LARRY AUSTIN UTILIZED THE CORNER.

IN A TIE SHEET DATED 25 OCTOBER 2013, AARON AUSTIN REPORTED THE CORNER AND REFERENCE TIES OBLITERATED BY APPARENT FENCING OPERATIONS. HE REMONUMENTED THE CORNER WITH A #8 x 30" REBAR WITH A GRANT COUNTY ALUMINUM CAP.

AFFIX LAND SURVEYOR SEAL

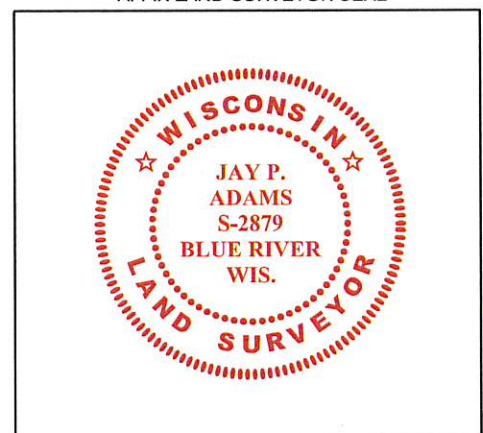
(I) I, JAY P. ADAMS, P.L.S. - 2879, CERTIFY THAT THE CORNER LOCATION SHOWN ON THIS RECORD WAS DETERMINED BY ME OR UNDER MY DIRECTION AND CONTROL AND THAT THIS U.S. PUBLIC LAND SURVEY MONUMENT RECORD IS CORRECT AND COMPLETE TO THE BEST OF MY KNOWLEDGE AND BELIEF.



30 MAY 2018

SIGNATURE

DATE



# U.S. PUBLIC LAND SURVEY MONUMENT RECORD - GRANT COUNTY, WI

Section 19, Town 4 North Range 3 West, Town of South Lancaster

**CERTIFICATE:**

I, Aaron J. Austin, do hereby certify that the corner location on this record was determined by me and/or under my direct supervision and that this U.S. Public Land Survey Monument Record is correct and complete to the best of my knowledge and belief.

Dated this 25th day of October, 2013.

*Aaron J. Austin*  
 Aaron J. Austin, S-2922



● = CORNER LOCATION

HISTORY OF CORNER ESTABLISHMENT:

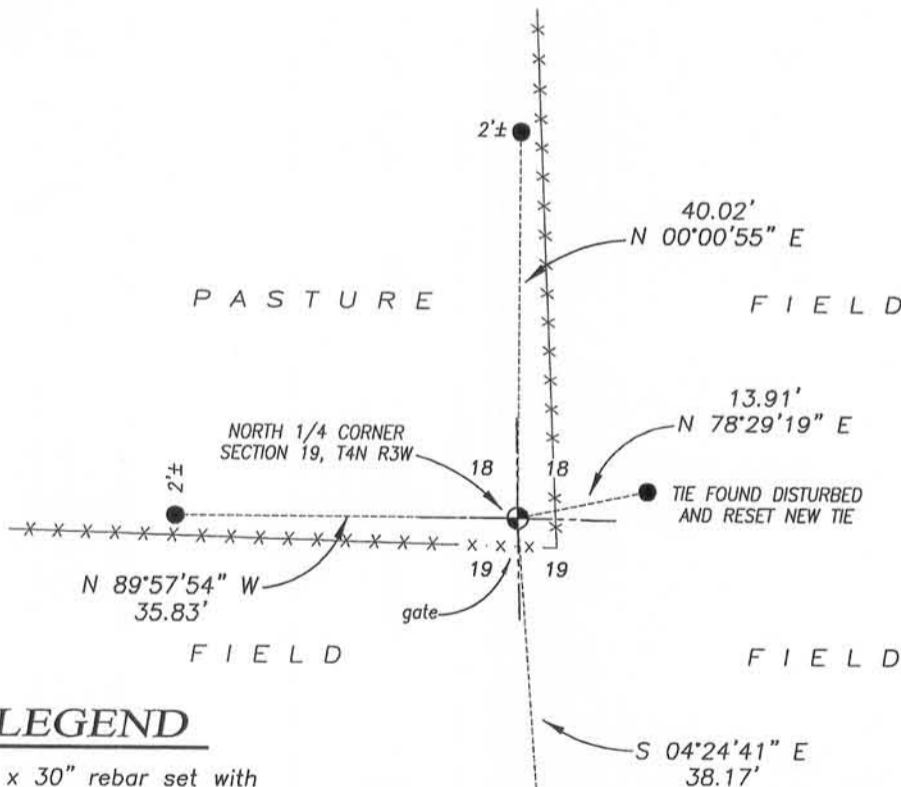
- 1833-Clark set original corner.
- 1844-Wiltse tied to the corner on a survey filed in Book A, Page 235.
- 1844-Wiltse tied to the corner on a survey filed in Book A, Page 165.
- 1844-Wiltse tied to the corner on a survey filed in Book A, Page 198.
- 2004-L. Austin the reset corner on a Survey filed in Book 16, Page 16.
- 2006-L. Austin tied to this corner on a Survey filed in Book 20, Page 50.
- 2007-L. Austin tied to this corner on a Survey filed in Book 22, Page 19.
- 2008-L. Austin tied to this corner on a Survey filed in Book 24, Page 26.

DESCRIPTION OF CORNER EVIDENCE FOUND:

Larry Austin prepared a U.S. Public Land Survey Monument Record for the corner in 2004. It appears the monument was removed with a fence line replacement. I was also unable to recover any reference monuments for this corner. I reset the corner by measuring to area monuments set by Larry Austin on a Survey filed in Book 22, Page 19. I verified its location by G.P.S. methods.

DESCRIPTION OF CORNER AND WITNESS MONUMENTS, references and accessories used to perpetuate the original or re-established location of this corner. Witnesses to corner location Shane Austin.

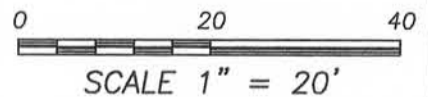
SKETCH:



Bearings referenced to the Grant County Coordinate System (2011 adjustment) which was determined by G.P.S. observation.

**LEGEND**

- No. 8 x 30" rebar set with Grant County Aluminum Cap
- Number 6 x 18" Rebar set with yellow plastic cap
- x-x- Approximate existing fence



4211 HWY 81 E, LANCASTER, WI 53813  
 PHONE: 608-723-6363 FAX: 608-723-6702

JOB NO: 13s164  
 G:\13s164  
 H:\TIE\T4NR3W\72(A)

FIELDBOOK: TDSR  
 DRAWN BY: AJ AUSTIN  
 CREW: SW AUSTIN

72(A)

DEC 27 2013

# U.S. PUBLIC LAND SURVEY MONUMENT RECORD - GRANT COUNTY, WI

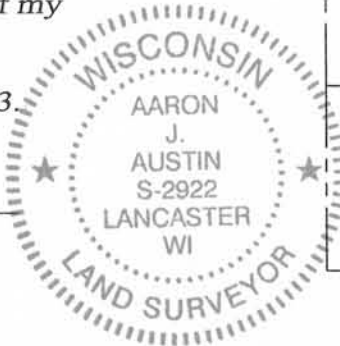
Section 19, Town 4 North Range 3 West, Town of South Lancaster

**CERTIFICATE:**

I, Aaron J. Austin, do hereby certify that the corner location on this record was determined by me and/or under my direct supervision and that this U.S. Public Land Survey Monument Record is correct and complete to the best of my knowledge and belief.

Dated this 25th day of October, 2013

*Aaron J. Austin*  
 Aaron J. Austin, S-2922



● = CORNER LOCATION

**HISTORY OF CORNER ESTABLISHMENT:**

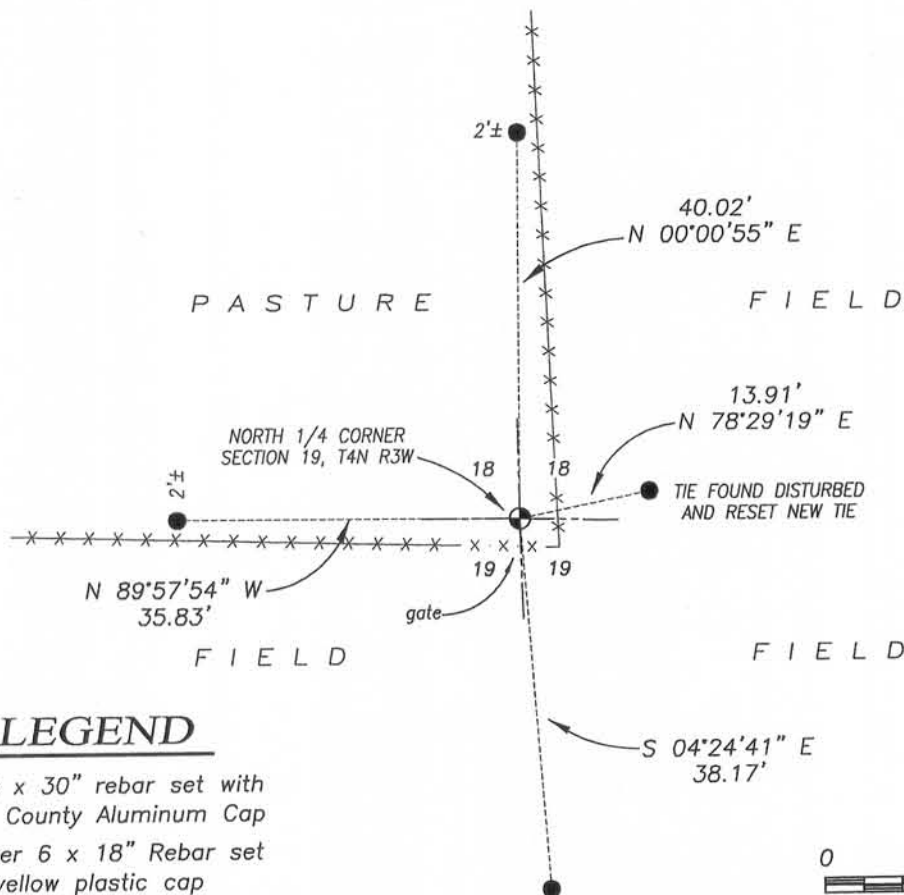
- 1833-Clark set original corner.
- 1844-Wiltse tied to the corner on a survey filed in Book A, Page 235.
- 1844-Wiltse tied to the corner on a survey filed in Book A, Page 165.
- 1844-Wiltse tied to the corner on a survey filed in Book A, Page 198.
- 2004-L. Austin the reset corner on a Survey filed in Book 16, Page 16.
- 2006-L. Austin tied to this corner on a Survey filed in Book 20, Page 50.
- 2007-L. Austin tied to this corner on a Survey filed in Book 22, Page 19.
- 2008-L. Austin tied to this corner on a Survey filed in Book 24, Page 26.

**DESCRIPTION OF CORNER EVIDENCE FOUND:**

Larry Austin prepared a U.S. Public Land Survey Monument Record for the corner in 2004. It appears the monument was removed with a fence line replacement. I was also unable to recover any reference monuments for this corner. I reset the corner by measuring to area monuments set by Larry Austin on a Survey filed in Book 22, Page 19. I verified its location by G.P.S. methods.

**DESCRIPTION OF CORNER AND WITNESS MONUMENTS, references and accessories used to perpetuate the original or re-established location of this corner. Witnesses to corner location Shane Austin.**

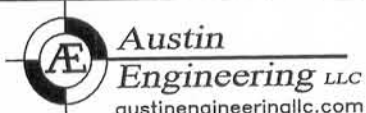
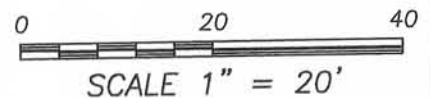
**SKETCH:**



Bearings referenced to the Grant County Coordinate System (2011 adjustment) which was determined by G.P.S. observation.

**LEGEND**

- No. 8 x 30" rebar set with Grant County Aluminum Cap
- Number 6 x 18" Rebar set with yellow plastic cap
- x-x- Approximate existing fence



4211 HWY 81 E, LANCASTER, WI 53813  
 PHONE: 608-723-6363 FAX: 608-723-6702

JOB NO: 13s164  
 G:\13s164  
 H:\TIE\T4NR3W\72(A)

FIELDBOOK: TDSR  
 DRAWN BY: AJ AUSTIN  
 CREW: SW AUSTIN

72(A)

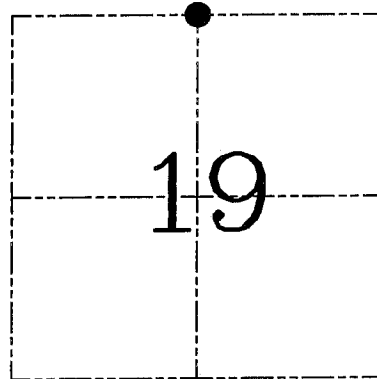
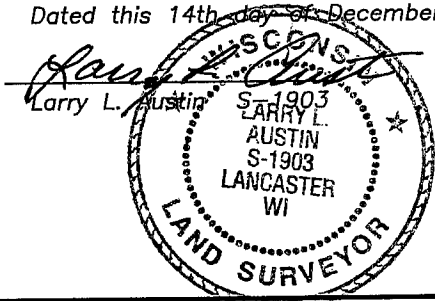
**U.S. PUBLIC LAND SURVEY MONUMENT RECORD – GRANT COUNTY, WI**

**Section 19, Town 4 North Range 3 West, Town of South Lancaster**

CERTIFICATE

I, Larry L. Austin, do hereby certify that the corner location on this record was determined by me and/or under my direct supervision and that this U.S. public land survey monument record is correct and complete to the best of my knowledge and belief.

Dated this 14th day of December, 2004



● = CORNER LOCATION

HISTORY OF CORNER ESTABLISHMENT

Corner was originally set in 1833 by Clark. Wiltse tied to the corner in 1844 with no mention of monument. No other record of the corner was found.

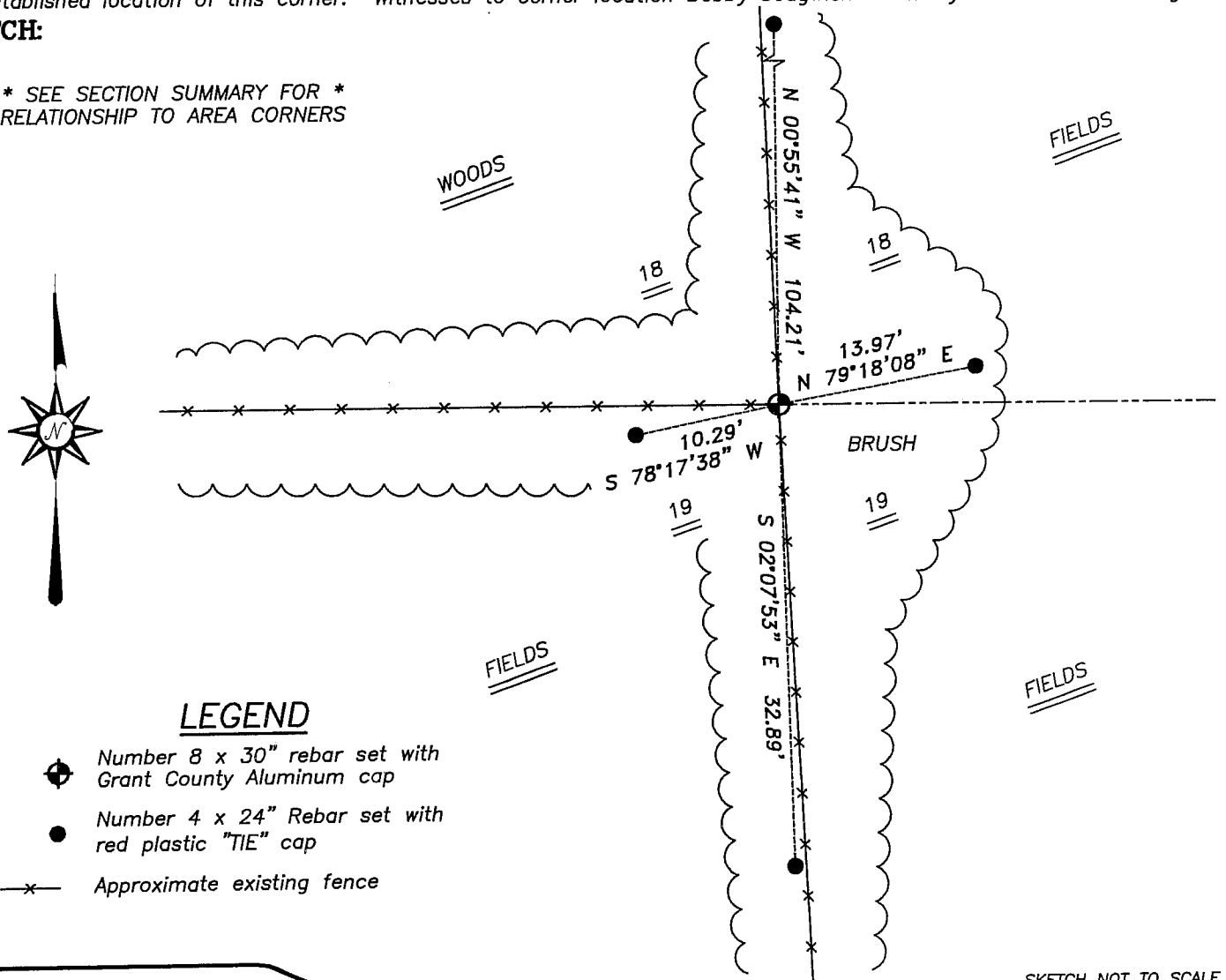
DESCRIPTION OF CORNER EVIDENCE FOUND

I found and accepted an occupied fence intersection at this location. Verified this location using EDM & GPS methods.

DESCRIPTION OF CORNER AND WITNESS MONUMENTS, references and accessories used to perpetuate the original or re-established location of this corner. Witnesses to corner location Bobby Sedgwick & Shelby Blindert & Brad Digman

**SKETCH:**

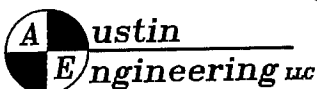
\* SEE SECTION SUMMARY FOR \*  
RELATIONSHIP TO AREA CORNERS



LEGEND

- Number 8 x 30" rebar set with Grant County Aluminum cap
- Number 4 x 24" Rebar set with red plastic "TIE" cap
- x- Approximate existing fence

SKETCH NOT TO SCALE



4211 HWY 81 E, LANCASTER, WI 53813  
PHONE 608-723-6363 FAX 608-723-6702

JOB NUMBER 04S249  
FIELDBOOK: TSDR, 2417  
G:\T4NR3W\17  
H:\TIE\T4NR3W\72

DRAWN BY: SW AUSTIN  
APPROVED: LL AUSTIN