

## GRANT COUNTY U.S. PUBLIC LAND SURVEY MONUMENT RECORD

INSTRUCTIONS: THIS RECORD SHALL SHOW THE LOCATION OF THE CORNER AND SHALL INCLUDE ALL OF THE FOLLOWING ELEMENTS (A THROUGH I).

(A) IDENTIFY THE CORNER AS REFERENCED TO THE U.S. PUBLIC LAND SURVEY SYSTEM

■ = CORNER MONUMENT RESTORED

WITNESSES TO CORNER LOCATION:

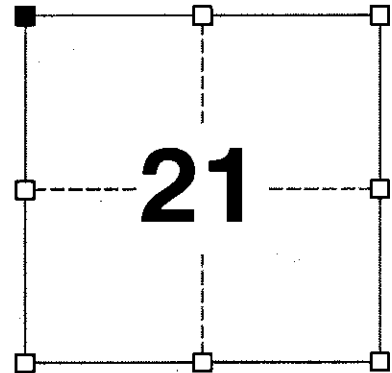
JAY P. ADAMS  
PAIGE O. JELINEK

GEOGRAPHIC COORDINATES,  
NAD 83 (2011) ADJUSTMENT:

LATITUDE: 42° 48' 48.79670"  
LONGITUDE: 90° 44' 33.14623"

WISCONSIN COORDINATE REFERENCE SYSTEM (WISCRS),  
GRANT COUNTY, NAD 83 (2011) ADJUSTMENT:

NORTHING: 511,101.77  
EASTING: 810,418.60



SECTION 21  
TOWNSHIP 4 NORTH, RANGE 3 WEST  
TOWN OF SOUTH LANCASTER

(B) DESCRIBE ANY RECORD EVIDENCE, MONUMENT EVIDENCE, OCCUPATIONAL EVIDENCE, TESTIMONIAL EVIDENCE OR ANY OTHER MATERIAL EVIDENCE YOU CONSIDERED, AND WHETHER THE MONUMENT WAS FOUND OR PLACED.

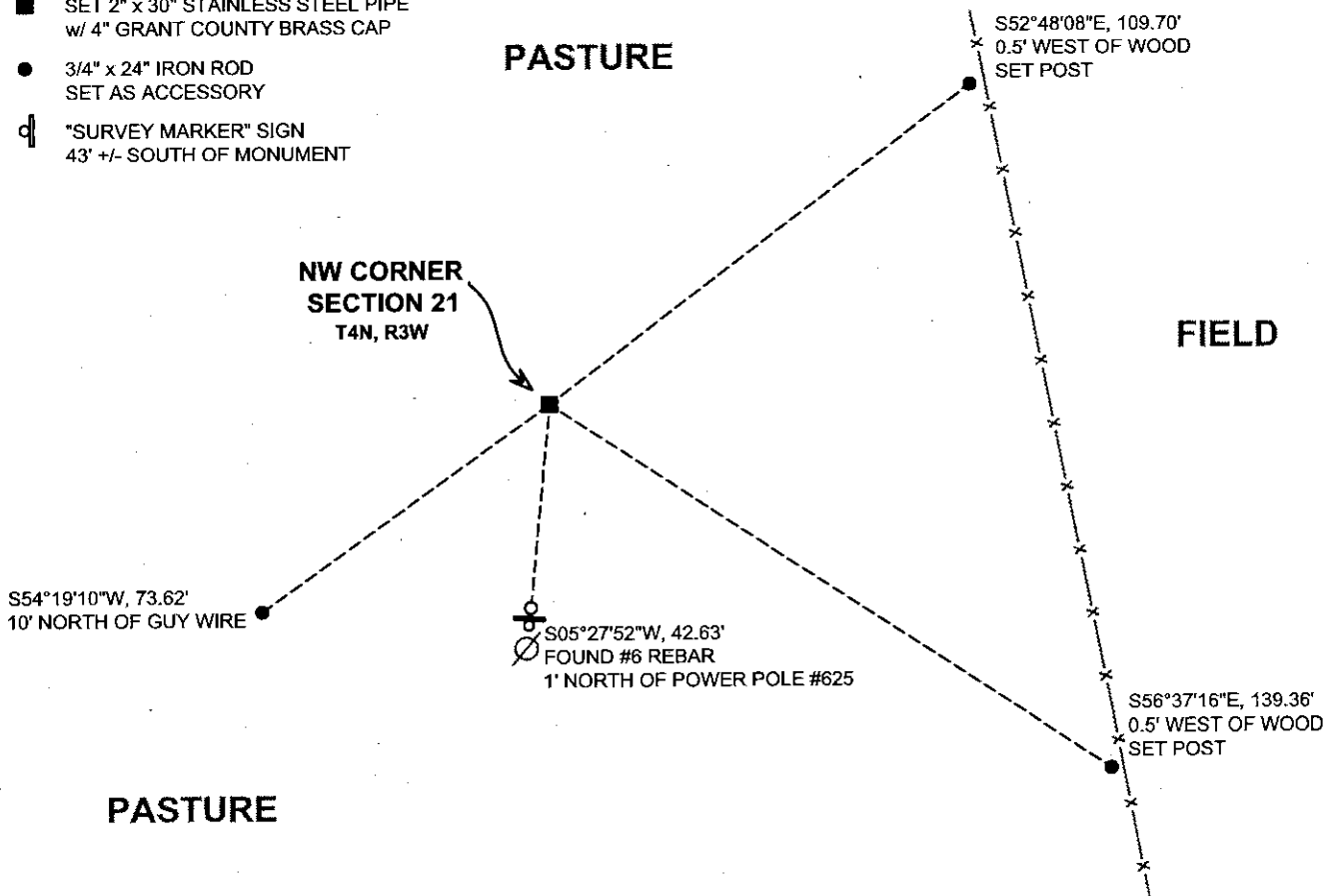
I COULD FIND NO MONUMENTS OR BEARING TREES FROM THE ORIGINAL GOVERNMENT SURVEY OR THE HISTORIC COUNTY SURVEYORS' SUBSEQUENT RESURVEYS. I RECOVERED THE 1.25" x 24" IRON ROD SET BY AUSTIN. AFTER VERIFYING THIS CORNER AGREES WITH OCCUPATIONAL EVIDENCE IN THE AREA, THIS LOCATION WAS ACCEPTED AS THE BEST AVAILABLE EVIDENCE OF THE CORNER AND THE MONUMENT WAS REPLACED WITH A 2" x 30" STAINLESS STEEL PIPE WITH A 4" GRANT COUNTY BRASS CAP.

(C) IN THE PLAN VIEW DRAWING BELOW, PROVIDE REFERENCE TIES TO AT LEAST 4 WITNESS MONUMENTS. WITNESS MONUMENTS SHALL BE MADE OF CONCRETE, NATURAL STONE, IRON, BEARING TREES OR ANY OTHER EQUALLY DURABLE MATERIAL. DEPICT THE RELEVANT MONUMENTS AND REFERENCE TIES WITH SUFFICIENT DETAIL TO ENABLE ACCURATE RELOCATION OF THE CORNER IF THE CORNER MONUMENT IS DISTURBED.

(D)

**LEGEND:**

- SET 2" x 30" STAINLESS STEEL PIPE w/ 4" GRANT COUNTY BRASS CAP
- 3/4" x 24" IRON ROD SET AS ACCESSORY
- ⊕ "SURVEY MARKER" SIGN 43' +/- SOUTH OF MONUMENT



# Remonumentation

(E) DESCRIBE ANY MATERIAL DISCREPANCY BETWEEN THE LOCATION OF THE CORNER AS RESTORED OR REESTABLISHED AND THE LOCATION OF THAT CORNER AS PREVIOUSLY RESTORED OR REESTABLISHED BY DISTANCE AND DIRECTION. SHOW THE DISCREPANCY ON THE PLAN VIEW DRAWING UNDER (D), ABOVE. SHOW THE DISTANCES BETWEEN THE CORNER AS PREVIOUSLY RESTORED OR REESTABLISHED AND (1) THE CORNER AS RESTORED OR REESTABLISHED, AND (2) TO AT LEAST 2 OF THE WITNESS MONUMENTS SHOWN ON THE DRAWING IN (D) ABOVE.

N/A

(F) WAS THE CORNER RESTORED THROUGH ACCEPTANCE OF (1) AN OBLITERATED EVIDENCE LOCATION, OR (2) A FOUND PERPETUATED LOCATION?

(2) A FOUND PERPETUATED LOCATION

(G&H) WAS THE CORNER REESTABLISHED THROUGH LOST CORNER PROPORTIONATE METHODS? IF SO, SHOW THE METHOD, INCLUDING THE DIRECTIONS AND DISTANCES TO OTHER PUBLIC LAND SURVEY CORNERS USED AS EVIDENCE OR USED FOR PROPORTIONING IN DETERMINING THE CORNER LOCATION.

N/A

#### CORNER HISTORY

THE ORIGINAL GOVERNMENT CORNER WAS SET BY ROBERT CLARK, JR IN THE FIRST QUARTER OF 1833.

IN THREE SURVEYS DATED FEBRUARY 1844, WILTSE WAS AT THE CORNER.


IN A PLAT OF SURVEY DATED 20 SEPTEMBER 1984, JOHN CEJKA WAS AT THE CORNER WITH NO MENTION OF A MONUMENT.

IN A TIE SHEET DATED 20 NOVEMBER 1990, LARRY AUSTIN SET A 1.25" x 24" REBAR AT A SINGLE PROPORTIONATE LOCATION. AUSTIN USED THIS CORNER IN A PLAT OF SURVEY ON THE SAME DATE.

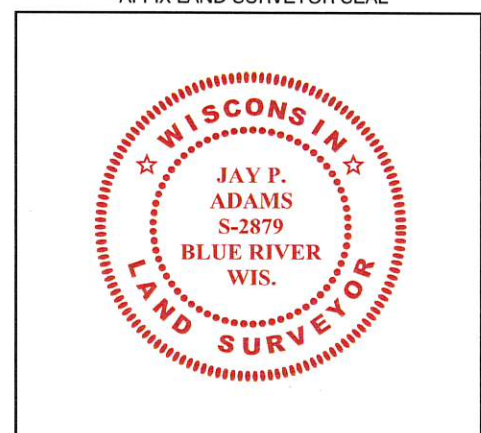
AUSTIN HAS UTILIZED THIS CORNER SEVERAL TIMES SINCE 1990.

AFFIX LAND SURVEYOR SEAL

(I) I, JAY P. ADAMS, P.L.S. - 2879, CERTIFY THAT THE CORNER LOCATION SHOWN ON THIS RECORD WAS DETERMINED BY ME OR UNDER MY DIRECTION AND CONTROL AND THAT THIS U.S. PUBLIC LAND SURVEY MONUMENT RECORD IS CORRECT AND COMPLETE TO THE BEST OF MY KNOWLEDGE AND BELIEF.

  
SIGNATURE

20 NOVEMBER 2018  
DATE

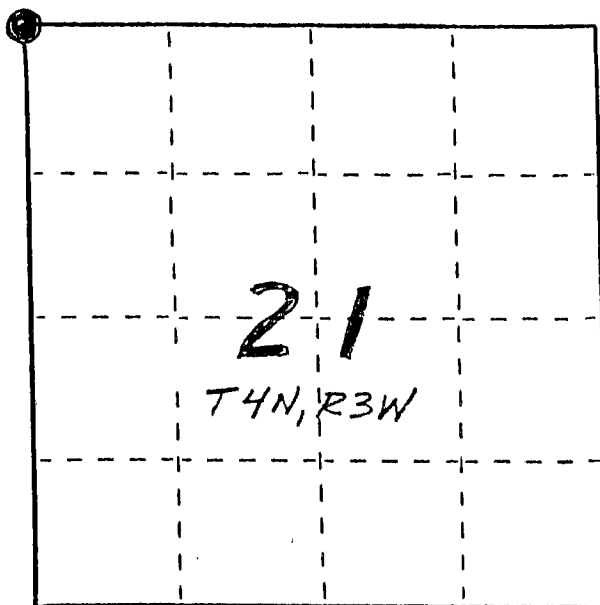


# U. S. PUBLIC LAND SURVEY MONUMENT RECORD

**INSTRUCTIONS:** This record shall show the location of the corner and shall include all of the following nine elements (a through i).

- (a) Identify the corner by reference to the U.S. public land survey system.
- = Corner monument restored.

NW CORNER, SEC 21  
 T4N, R3W, GRANT CO. WI



- (b) Describe any record evidence, monument evidence, occupational evidence, testimonial evidence or any other material evidence you considered, and whether the monument was found or placed.

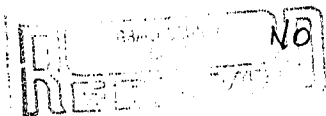
MONUMENT WAS PLACED

BASED ON PHYSICAL EVIDENCE & EDM TRAVERSE OF THE AREA.

NO RECORD FOUND SINCE ORIG SURVEYS -

- (c) In the plan view drawing below, provide reference ties to at least 4 witness monuments, or, if the location is within a municipality, to at least 2 witness monuments. (Witness monuments shall be made of concrete, natural stone, iron or other equally durable material, ~~except~~ wood.) Describe witness monuments.

- (d) Show a plan view drawing depicting the relevant monuments and reference ties which is sufficient in detail to enable accurate relocation of the corner monument if the corner monument is disturbed. Indicate north.

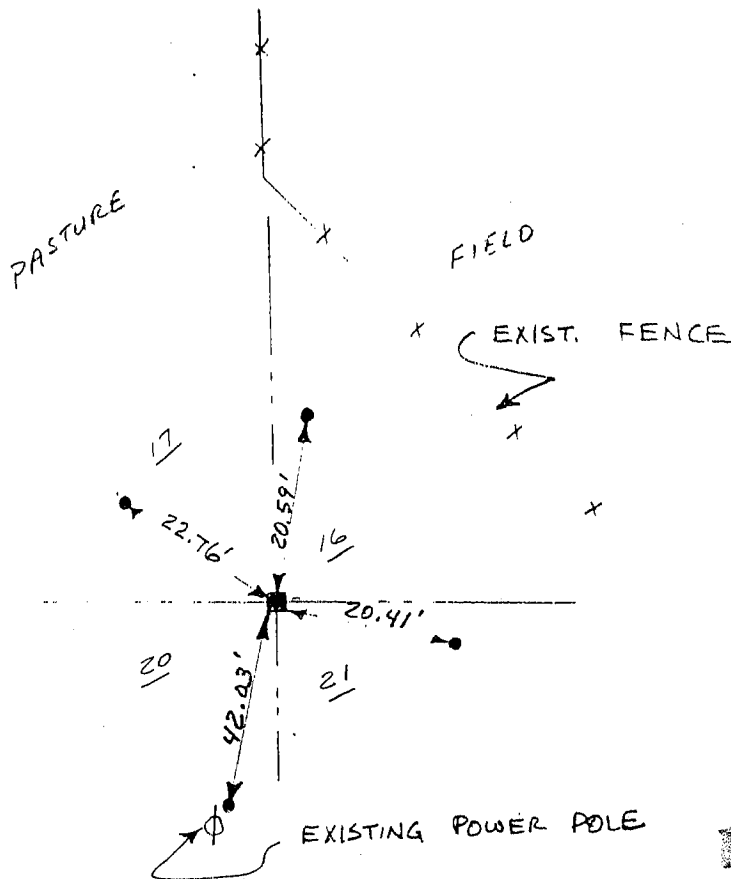


SCALE



JUN 10 1991

- 1/4" x 24" REBAR = NW COR SEC 21
- 3/8" x 10" STEEL SPIKE = TIE



0.69

(e) Describe any material discrepancy between the location of the corner as restored or reestablished and the location of that corner as previously restored or reestablished by distance and direction. Show the discrepancy on the plan view drawing under (d), above. Show the distances between the corner as previously restored or reestablished and (1) the corner as restored or reestablished, and (2) to at least 2 of the witness monuments shown on the drawing in (d), above.

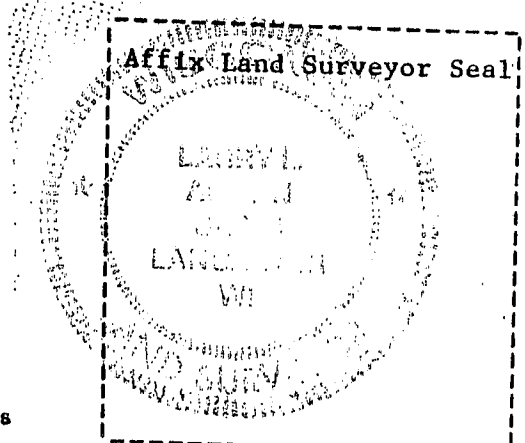
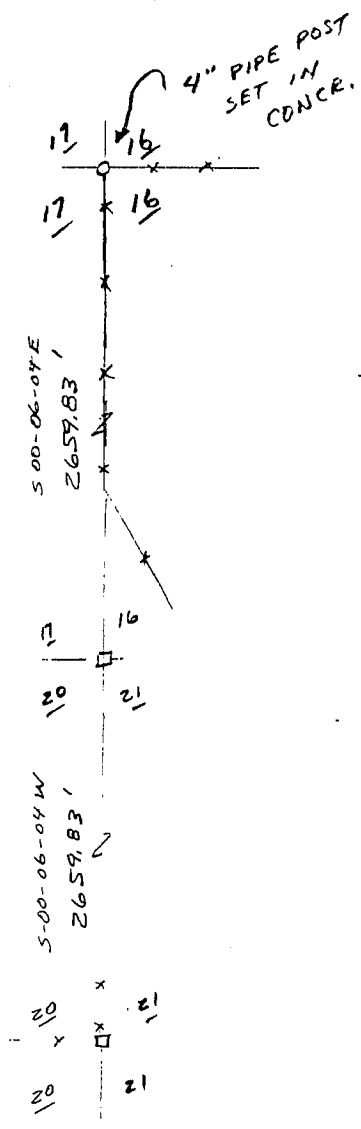
NONE

(f) Was the corner restored through acceptance of (1) an obliterated evidence location, or, (2) a found perpetuated location?

NO

(g&h) Was the corner reestablished through lost corner proportionate methods? If so, show the method, including the directions and distances to other public land survey corners used as evidence or used for proportioning in determining the corner location?

YES



(1) I, LARRY AUSTIN  
 (type or print name) certify that the corner location shown on this record was determined by me or under my direction and control and that this U.S. Public Land Survey Monument Record is correct and complete to the best of my knowledge and belief.

Larry S. Austin 11/20/90