

43063

GRANT COUNTY U.S. PUBLIC LAND SURVEY MONUMENT RECORD

DATUM: WISCONSIN COORDINATE REFERENCE SYSTEM (WISCRS), GRANT COUNTY, NAD 83 (2011) ADJ.

GRANT COUNTY COORDINATES

NORTH 511,058.18

EAST 826,237.60

GEOGRAPHIC COORDINATES

LONG. 90°41'00.92190"

LAT. 42°48'48.20503"

CONTROL: MULTIPLE GPS OBSERVATIONS

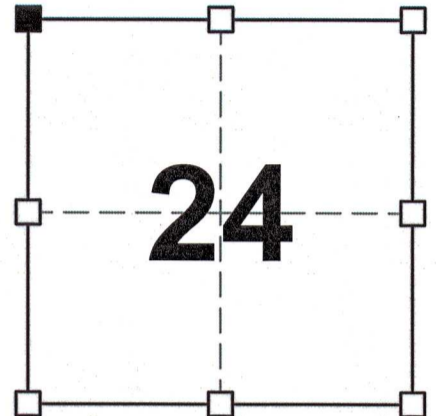
THE NORTHWEST CORNER OF SECTION 24,
TOWNSHIP 4 NORTH, RANGE 3 WEST, TOWN OF
SOUTH LANCASTER, GRANT COUNTY, WISCONSIN.

(A) IDENTIFY THE CORNER BY REFERENCE TO THE U.S. PUBLIC LAND SURVEY SYSTEM

■ = CORNER MONUMENT RESTORED

WITNESS TO CORNER LOCATION:

JEREMY F. KRACHEY
PAIGE O. JELINEK



SECTION 24
TOWNSHIP 4 NORTH, RANGE 3 WEST
TOWN OF SOUTH LANCASTER

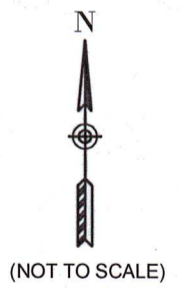
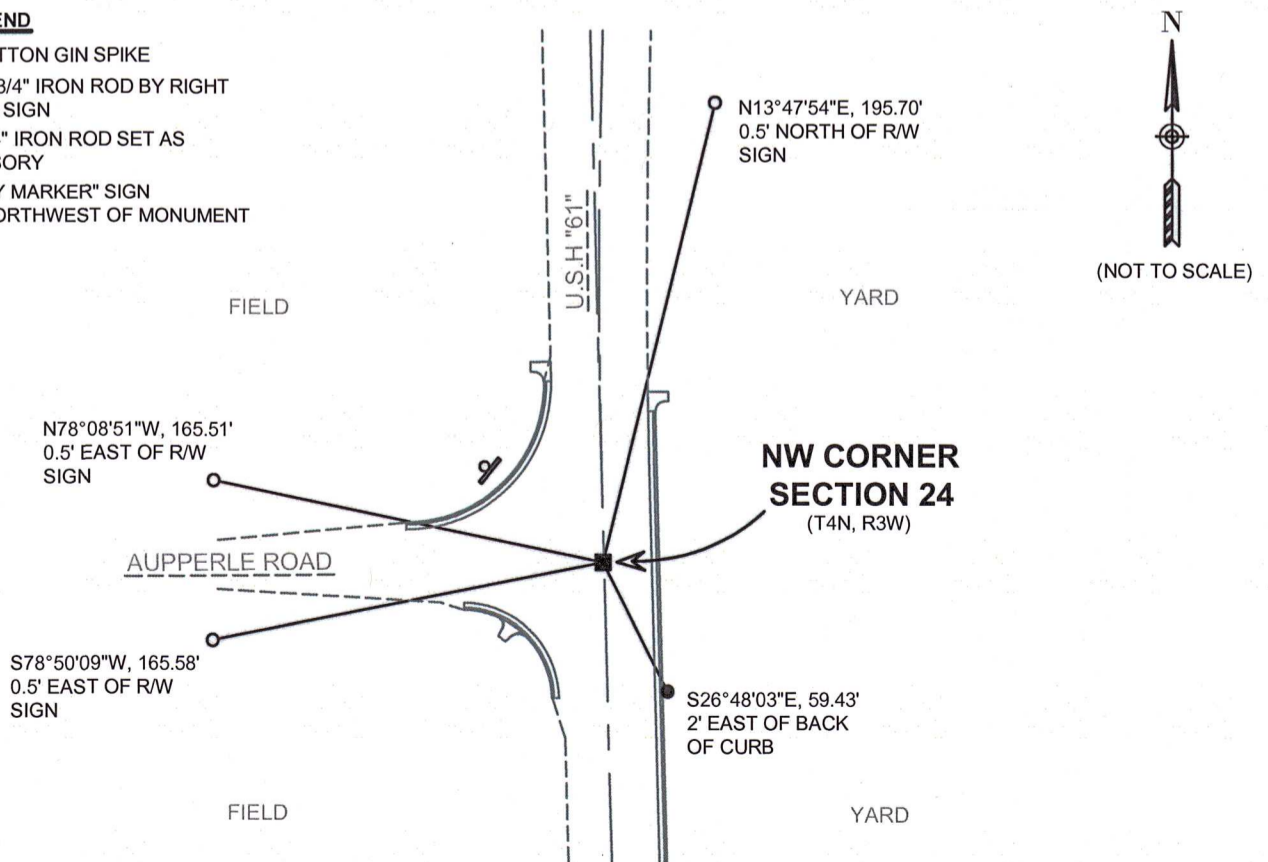
(B) DESCRIBE ANY RECORD EVIDENCE, MONUMENT EVIDENCE, OCCUPATIONAL EVIDENCE, TESTIMONIAL EVIDENCE OR ANY OTHER MATERIAL EVIDENCE YOU CONSIDERED, AND WHETHER THE MONUMENT WAS FOUND OR PLACED.

I COULD FIND NO MONUMENTS OR BEARING TREES FROM THE ORIGINAL GOVERNMENT SURVEY OR THE COUNTY SURVEYOR'S SUBSEQUENT RESURVEYS. DURING THE CONSTRUCTION OF U.S.H. "61" THE CAST IRON MANHOLE WAS RECOVERED AS WELL AS THE ALUMINUM MONUMENT INSIDE THE MANHOLE. AS STATED BY JAY ADAMS PREVIOUSLY, THE LID TO THE MANHOLE WAS SEIZED AND WE WERE UNABLE TO OPEN THE LID WITHOUT DESTRUCTION TO IT. UPON FINDING THE ALUMINUM MONUMENT, WE SHOT THE MONUMENT AND SET A COTTON GIN SPIKE AT THE CORNER LOCATION ONCE CONSTRUCTION WAS COMPLETED ON 11-10-23. I ACCEPTED THIS LOCATION AS THE BEST AVAILABLE EVIDENCE OF THE ORIGINAL GOVERNMENT CORNER BASED ON PAST OCCUPATIONAL EVIDENCE.

(C) IN THE PLAN VIEW DRAWING BELOW, PROVIDE REFERENCE TIES TO AT LEAST 4 WITNESS MONUMENTS OR, IF THE LOCATION IS WITHIN A MUNICIPALITY, TO AT LEAST 2 WITNESS MONUMENTS. (WITNESS MONUMENTS SHALL BE MADE ON CONCRETE, NATURAL STONE, IRON, OR OTHER EQUALLY DURABLE MATERIAL.) DESCRIBE WITNESS MONUMENTS.

LEGEND

- SET COTTON GIN SPIKE
- FOUND 3/4" IRON ROD BY RIGHT OF WAY SIGN
- 3/4" X 24" IRON ROD SET AS ACCESSORY
- ⊞ "SURVEY MARKER" SIGN 63' +/- NORTHWEST OF MONUMENT



(D) DESCRIBE ANY MATERIAL DISCREPANCY BETWEEN THE LOCATION OF THE CORNER AS RESTORED OR ESTABLISHED AND THE LOCATION OF THAT CORNER AS PREVIOUSLY RESTORED OR REESTABLISHED BY DISTANCE AND DIRECTION. SHOW THE DISCREPANCY ON THE PLAN VIEW DRAWING UNDER (C), ABOVE. SHOW THE DISTANCES BETWEEN THE CORNER AS PREVIOUSLY RESTORED OR REESTABLISHED AND (1) THE CORNER AS RESTORED OR REESTABLISHED, AND (2) TO AT LEAST 2 OF THE WITNESS MONUMENTS AS SHOWN ON THE DRAWING IN (C), ABOVE.

N/A

(E) WAS THE CORNER RESTORED THROUGH ACCEPTANCE OF (1) AN OBLITERATED EVIDENCE LOCATION, OR (2) A FOUND PERPETUATED LOCATION?

(2) A FOUND PERPETUATED LOCATION

(F & G) WAS THE CORNER REESTABLISHED THROUGH LOST CORNER PROPORTIONATE METHODS? IF SO SHOW THE METHOD, INCLUDING THE DIRECTION AND DISTANCED TO OTHER PUBLIC LAND SURVEY CORNERS USED AS EVIDENCE OR USED FOR PROPORTIONING IN DETERMINING THE CORNER LOCATION.

N/A

CORNER HISTORY:

ORIGINAL GOVERNMENT CORNER ESTABLISHED BY ROBERT CLARK JR. IN THE FIRST QUARTER OF 1833.

GEORGE STUNTZ PERFORMED A SURVEY DATED JANUARY 17, 1846 AND VISITED THE CORNER.

PLAT OF SURVEY DATED MAY 20, 1968, HOMER RALPH VISTED THE CORNER WITH NO MENTION OF A MONUMENT.

PLAT OF SURVEY DATED APRIL 14, 1981, DAVID DAVIS REPORTED A RAILROAD SPIKE AT THE CORNER.

TIE SHEET 3-9-1988, TIMOTHY MOORE SET A 3/4" x 24" REBAR WITH AN ALUMINUM CAP IN PLACE OF A FOUND RAILROAD SPIKE REFERENCE IN A 1981 SURVEY BY DAVE DAVIS.

PLAT OF SURVEYS DATED JULY 2, 2008 AND JULY 31, 2008, LARRY AUSTIN FOUND AN ALUMINUM CAP IN A MANHOLE.

CERTIFIED SURVEY MAP DATED MARCH 14, 2008, LARRY AUSTIN REPORTED A NO. 6 REBAR WITH AN ALUMINUM CAP AT THE CORNER.

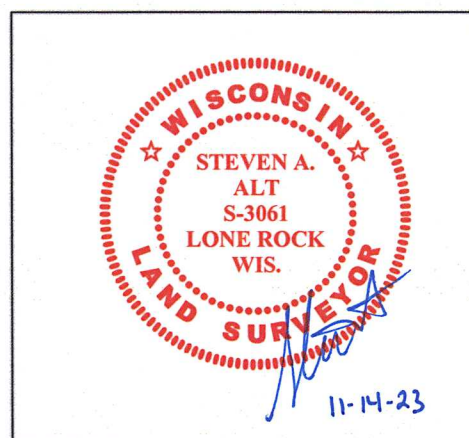
PLAT OF SURVEY DATED MARCH 14, 2012, AARON AUSTIN REPORTED A COTTON GIN SPIKE IS TO BE SET AT THE CORNER LOCATION.

TIE SHEET 4-23-2012, JOHN KREBS FOUND AN ALUMINUM CAP IN A MONUMENT BOX AND TWO TIES FROM THE TIMOTHY MOORE TIE SHEET.

TIE SHEET 11-28-2018, JAY ADAMS REPORTED FINDING THE CAST IRON MANHOLE OF WHICH THE COVER WAS SEIZED PREVENTING A DIRECT OBSERVATION OF THE MONUMENT AND REPORTED COORDINATES FROM TIES.

PLAT OF SURVEY DATED JANUARY 15, 2019, AARON AUSTIN FOUND AN ALUMINUM MONUMENT AT THE CORNER.

AFFIX LAND SURVEYOR SEAL



(H) I, STEVEN A. ALT, P.L.S 3061 CERTIFY THAT THE CORNER LOCATION SHOWN ON THIS RECORD WAS DETERMINED BY ME OR UNDER MY DIRECTION AND CONTROL AND THAT THIS U.S. PUBLIC LAND SURVEY MONUMENT RECORD IS CORRECT AND COMPLETE TO THE BEST OF MY KNOWLEDGE AND BELIEF.

SIGNATURE

11-14-2023

DATE

GRANT COUNTY U.S. PUBLIC LAND SURVEY MONUMENT RECORD

INSTRUCTIONS: THIS RECORD SHALL SHOW THE LOCATION OF THE CORNER AND SHALL INCLUDE ALL OF THE FOLLOWING ELEMENTS (A THROUGH I).

(A) IDENTIFY THE CORNER AS REFERENCED TO THE U.S. PUBLIC LAND SURVEY SYSTEM

■ = CORNER MONUMENT RESTORED

WITNESSES TO CORNER LOCATION:

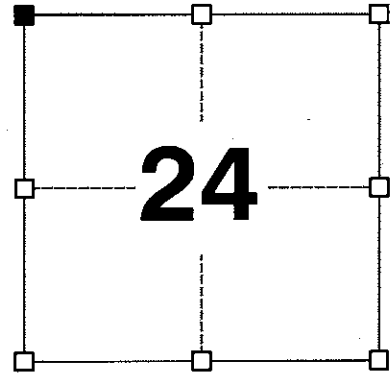
JAY P. ADAMS
STEVEN A. ALT

GEOGRAPHIC COORDINATES,
NAD 83 (2011) ADJUSTMENT:

LATITUDE: 42° 48' 48.20504"
LONGITUDE: 90° 41' 00.92458"

WISCONSIN COORDINATE REFERENCE SYSTEM (WISCRS),
GRANT COUNTY, NAD 83 (2011) ADJUSTMENT:

NORTHING: 511,058.18
EASTING: 826,237.40



SECTION 24
TOWNSHIP 4 NORTH, RANGE 3 WEST
TOWN OF SOUTH LANCASTER

(B) DESCRIBE ANY RECORD EVIDENCE, MONUMENT EVIDENCE, OCCUPATIONAL EVIDENCE, TESTIMONIAL EVIDENCE OR ANY OTHER MATERIAL EVIDENCE YOU CONSIDERED, AND WHETHER THE MONUMENT WAS FOUND OR PLACED.

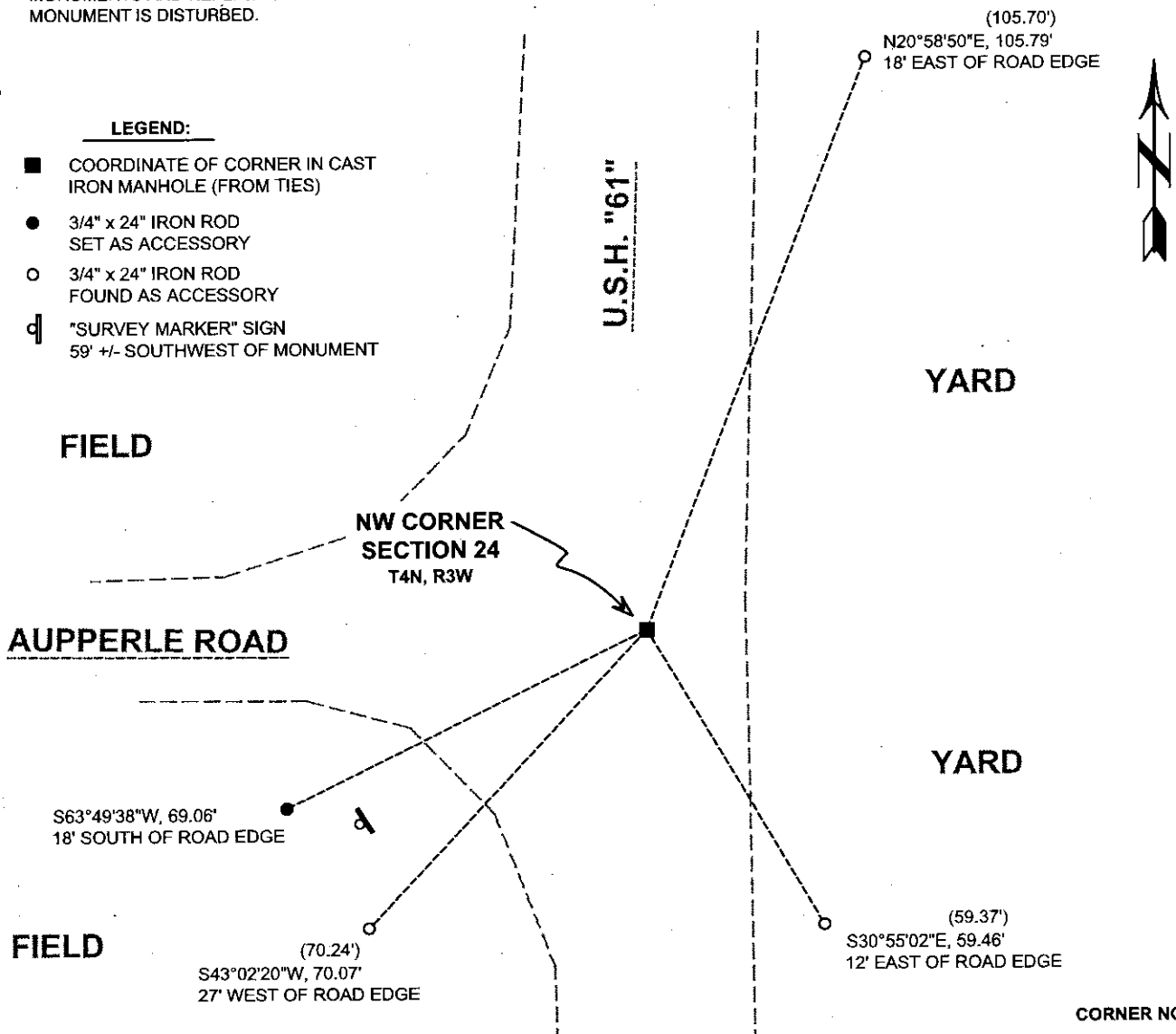
I COULD FIND NO MONUMENTS OR BEARING TREES FROM THE ORIGINAL GOVERNMENT SURVEY OR THE HISTORIC COUNTY SURVEYOR'S SUBSEQUENT RESURVEY. I RECOVERED THE CAST IRON MANHOLE MOST RECENTLY REFERENCED BY KREBS. HOWEVER, THE MANHOLE COVER IS SEIZED ON THE CASTING PREVENTING A DIRECT OBSERVATION OF THE CORNER. THE COORDINATE PROVIDED HAS BEEN ESTABLISHED FROM TIES.

(C) IN THE PLAN VIEW DRAWING BELOW, PROVIDE REFERENCE TIES TO AT LEAST 4 WITNESS MONUMENTS. WITNESS MONUMENTS SHALL BE MADE OF CONCRETE, NATURAL STONE, IRON, BEARING TREES OR ANY OTHER EQUALLY DURABLE MATERIAL. DEPICT THE RELEVANT MONUMENTS AND REFERENCE TIES WITH SUFFICIENT DETAIL TO ENABLE ACCURATE RELOCATION OF THE CORNER IF THE CORNER MONUMENT IS DISTURBED.

(D)

LEGEND:

- COORDINATE OF CORNER IN CAST IRON MANHOLE (FROM TIES)
- 3/4" x 24" IRON ROD SET AS ACCESSORY
- 3/4" x 24" IRON ROD FOUND AS ACCESSORY
- Ⓧ "SURVEY MARKER" SIGN 59' +/- SOUTHWEST OF MONUMENT



Remonumentation

(E) DESCRIBE ANY MATERIAL DISCREPANCY BETWEEN THE LOCATION OF THE CORNER AS RESTORED OR REESTABLISHED AND THE LOCATION OF THAT CORNER AS PREVIOUSLY RESTORED OR REESTABLISHED BY DISTANCE AND DIRECTION. SHOW THE DISCREPANCY ON THE PLAN VIEW DRAWING UNDER (D), ABOVE. SHOW THE DISTANCES BETWEEN THE CORNER AS PREVIOUSLY RESTORED OR REESTABLISHED AND (1) THE CORNER AS RESTORED OR REESTABLISHED, AND (2) TO AT LEAST 2 OF THE WITNESS MONUMENTS SHOWN ON THE DRAWING IN (D) ABOVE.

N/A

(F) WAS THE CORNER RESTORED THROUGH ACCEPTANCE OF (1) AN OBLITERATED EVIDENCE LOCATION, OR (2) A FOUND PERPETUATED LOCATION?

(2) A FOUND PERPETUATED LOCATION.

(G&H) WAS THE CORNER REESTABLISHED THROUGH LOST CORNER PROPORTIONATE METHODS? IF SO, SHOW THE METHOD, INCLUDING THE DIRECTIONS AND DISTANCES TO OTHER PUBLIC LAND SURVEY CORNERS USED AS EVIDENCE OR USED FOR PROPORTIONING IN DETERMINING THE CORNER LOCATION.

N/A

CORNER HISTORY

THE ORIGINAL GOVERNMENT CORNER WAS ESTABLISHED BY ROBERT CLARK JR. IN THE FIRST QUARTER OF 1833.

IN A SURVEY DATED 17 JANUARY 1846, GEORGE STUNTZ WAS AT THE CORNER.

IN A PLAT OF SURVEY DATED 20 MAY 1968, HOMER RALPH WAS AT THE CORNER WITH NO MENTION OF A MONUMENT.

IN A TIE SHEET DATED 9 MARCH 1988, TIMOTHY MOORE SET A 3/4" x 24" REBAR WITH AN ALUMINUM CAP IN PLACE OF A FOUND RAILROAD SPIKE REFERENCED IN A 1981 SURVEY BY DAVE DAVIS.

IN PLATS OF SURVEY DATED 2 JULY 2007 AND 31 JULY 2008, LARRY AUSTIN FOUND AN ALUMINUM CAP IN A MANHOLE.

IN A CERTIFIED SURVEY MAP DATED 14 MARCH 2008, LARRY AUSTIN REPORTS AND #6 REBAR WITH AN ALUMINUM CAP.

IN A PLAT OF SURVEY DATED 14 MARCH 2012, AARON AUSTIN REPORTS THAT A COTTON GIN SPIKE IS TO BE SET HERE.

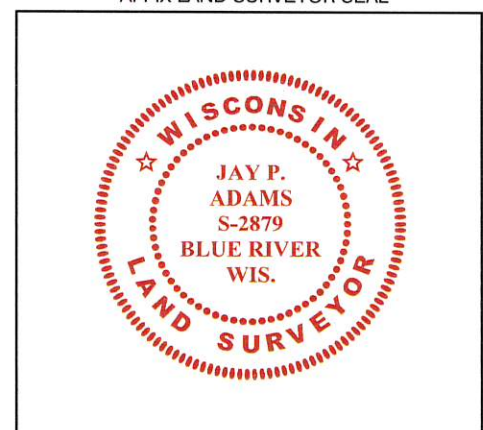
IN A TIE SHEET DATED 23 APRIL 2012, JOHN KREBS FOUND AN ALUMINUM CAP IN A MONUMENT BOX AND TWO TIES FROM THE TIMOTHY MOORE TIE SHEET.

AFFIX LAND SURVEYOR SEAL

(I) I, JAY P. ADAMS, P.L.S. - 2879, CERTIFY THAT THE CORNER LOCATION SHOWN ON THIS RECORD WAS DETERMINED BY ME OR UNDER MY DIRECTION AND CONTROL AND THAT THIS U.S. PUBLIC LAND SURVEY MONUMENT RECORD IS CORRECT AND COMPLETE TO THE BEST OF MY KNOWLEDGE AND BELIEF.


SIGNATURE

28 NOVEMBER 2018
DATE



U.S. PUBLIC LAND SURVEY MONUMENT RECORD - GRANT COUNTY, WI

Section 23, Town 4 North, Range 3 West, Town of South Lancaster

(a)

NOTE: This form is intended and designed to fulfill all requirements of Wisconsin Administrative Code, Chapter A-E 7.08, U.S. Public Land Survey Monument Record (3) (a) (b) (c) (d) (e) (f) (g) (h) (i). "An additional sheet may be added if necessary to conform with said requirements."

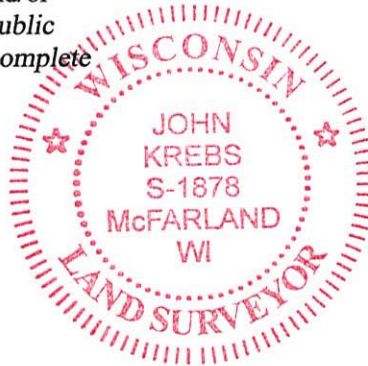
CERTIFICATE:

(i)

I, John Krebs, do hereby certify that the corner location on this record was determined by me and/or under my direct supervision and that this U.S. Public Land Survey Monument Record is correct and complete to the best of my knowledge and belief.

Dated this 4th day of April, 2012.

John Krebs 4-23-12
 John Krebs, S-1878



HISTORY OF CORNER ESTABLISHMENT:

Homer Ralph did a survey in 1968 that tied to the section corner.
 Dave A. Davis did a survey in 1981 showing a RR Spike at the Section corner.
 Timothy J. Moore set a 3/4" rebar with aluminum cap at the Section corner.
 Michael S. O'Keefe, S-2743, located corner on July 6, 2011, before road construction began.

DESCRIPTION OF CORNER EVIDENCE FOUND:

(b) (f) (g) (h)

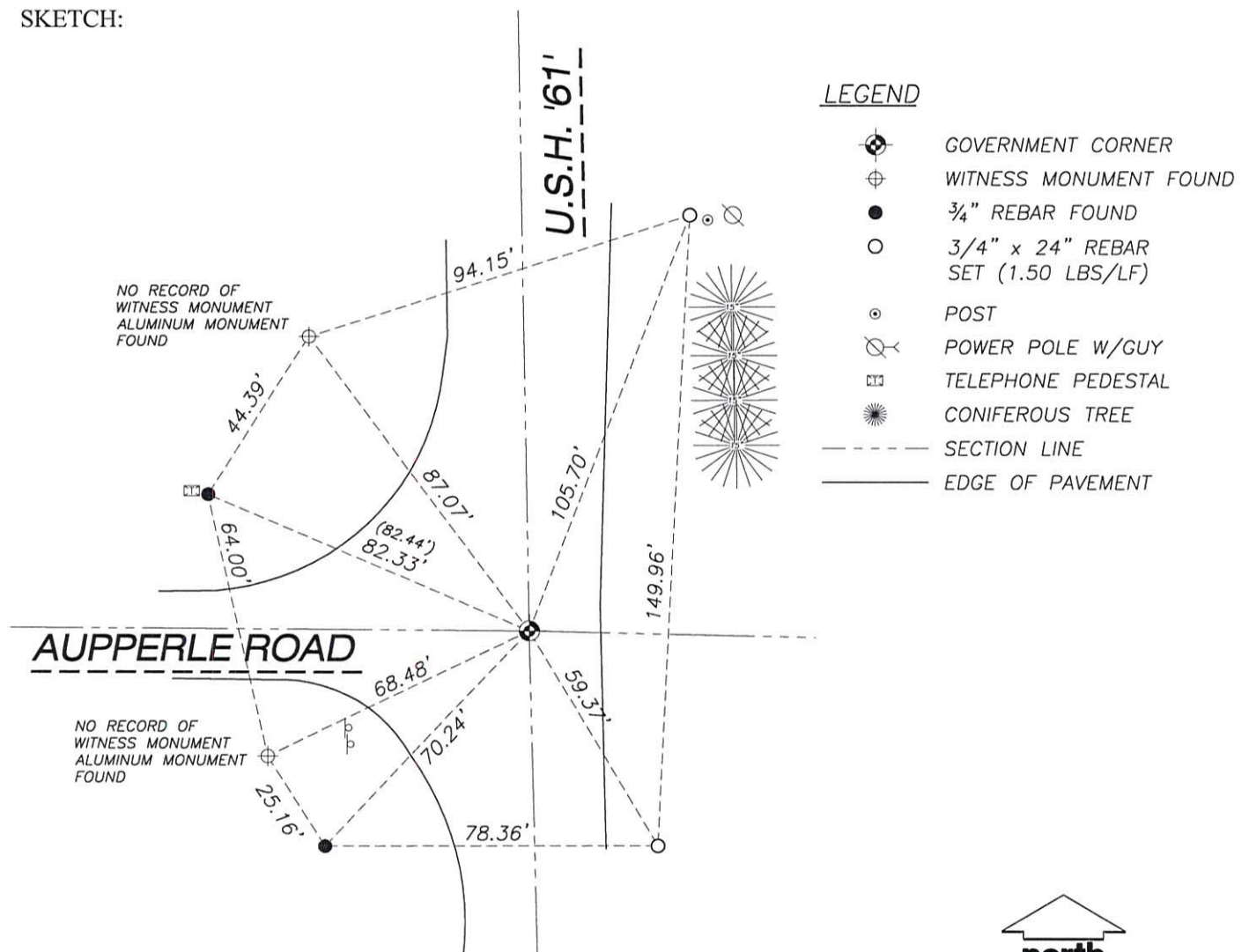
Found aluminum monument in monument box and 2 ties of record on a tie sheet by Timothy J. Moore, S-1830, dated March 9, 1988. Found two additional ties and set two additional ties as shown.

Witnesses to corner location _____

DESCRIPTION OF CORNER AND WITNESS MONUMENTS: references and accessories used to perpetuate the original or re-established location of this corner.

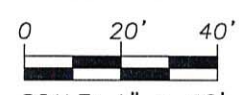
(c) (d) (e)

SKETCH:



LEGEND

- GOVERNMENT CORNER
- WITNESS MONUMENT FOUND
- 3/4" REBAR FOUND
- 3/4" x 24" REBAR SET (1.50 LBS/LF)
- POST
- POWER POLE W/GUY
- TELEPHONE PEDESTAL
- CONIFEROUS TREE
- SECTION LINE
- EDGE OF PAVEMENT



SHEET 1 OF 1

SCALE: 1" = 40'

63

J:\2011\114660\dwg\11-4660 WisDOT Dickeyville.dwg

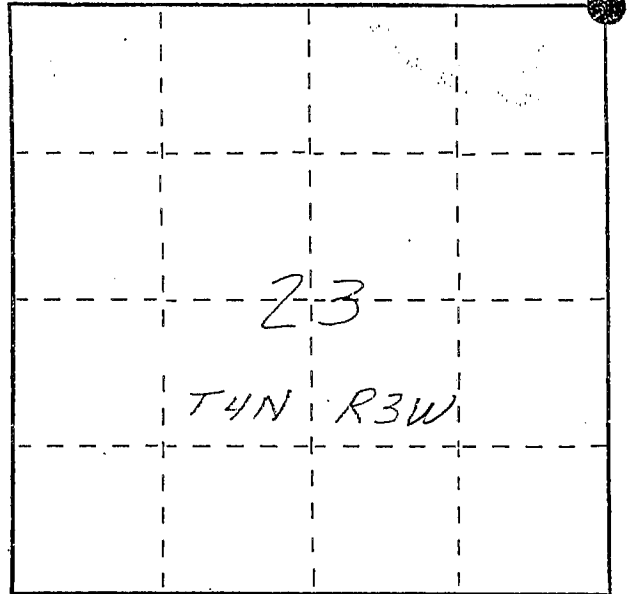
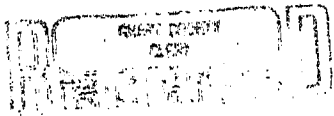
U. S. PUBLIC LAND SURVEY MONUMENT RECORD

INSTRUCTIONS: This record shall show the location of the corner and shall include all of the following nine elements (a through i).

(a) Identify the corner by reference to the U.S. public land survey system.

● = Corner monument restored.

NE corner section 23
T4N R3W of the
4th P.M.
Town of South Lancaster.
Grant County, Wisconsin.



APR 27 1988

(b) Describe any record evidence, monument evidence, occupational evidence, testimonial evidence or any other material evidence you considered, and whether the monument was found or placed.

Accepted RR spike of record. RR spike is referred to in a 1981 Dave A. Davis Survey. Homer Ralph did a survey in 1968 that tied to the NE corner of 23 but there was no call for a specific kind of monument. Location fits other reestablished corners in the area and agrees well with the 1935 hwy R/W plat and existing roadway centerlines. Due to planned construction a Berntsen monument was not set.

(c) In the plan view drawing below, provide reference ties to at least 4 witness monuments, or, if the location is within a municipality, to at least 2 witness monuments. (Witness monuments shall be made of concrete, natural stone, iron or other equally durable material, ~~except wood~~.) Describe witness monuments.

(d) Show a plan view drawing depicting the relevant monuments and reference ties which is sufficient in detail to enable accurate relocation of the corner monument if the corner monument is disturbed. Indicate north.

