

GRANT COUNTY U.S. PUBLIC LAND SURVEY MONUMENT RECORD

INSTRUCTIONS: THIS RECORD SHALL SHOW THE LOCATION OF THE CORNER AND SHALL INCLUDE ALL OF THE FOLLOWING ELEMENTS (A THROUGH I).

(A) IDENTIFY THE CORNER AS REFERENCED TO THE U.S. PUBLIC LAND SURVEY SYSTEM

■ = CORNER MONUMENT RESTORED

WITNESSES TO CORNER LOCATION:

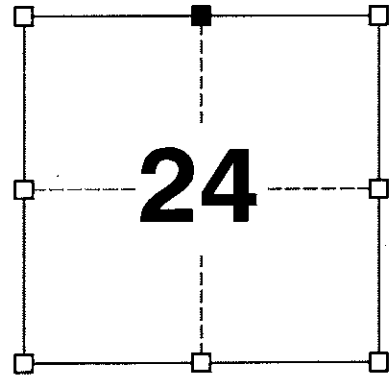
JAMIE L. BRANDT
STEVEN A. ALT

GEOGRAPHIC COORDINATES,
NAD 83 (2011) ADJUSTMENT:

LATITUDE: 42° 48' 48.57752"
LONGITUDE: 90° 40' 25.42811"

WISCONSIN COORDINATE REFERENCE SYSTEM (WISCRS),
GRANT COUNTY, NAD 83 (2011) ADJUSTMENT:

NORTHING: 511,099.70
EASTING: 828,883.21



SECTION 24
TOWNSHIP 4 NORTH, RANGE 3 WEST
TOWN OF SOUTH LANCASTER

(B) DESCRIBE ANY RECORD EVIDENCE, MONUMENT EVIDENCE, OCCUPATIONAL EVIDENCE, TESTIMONIAL EVIDENCE OR ANY OTHER MATERIAL EVIDENCE YOU CONSIDERED, AND WHETHER THE MONUMENT WAS FOUND OR PLACED.

I COULD FIND NO MONUMENTS OR BEARING TREES FROM THE ORIGINAL GOVERNMENT SURVEY. I RECOVERED THE BERNTSEN ALUMINUM MONUMENT SET BY MOORE. HOWEVER, I FOUND THIS LOCATION TO PUT A CONSIDERABLE BEND IN THE NORTH LINE OF SECTION 24. FURTHER, EAST-WEST OCCUPATION LINES LOCATED BOTH NORTH AND SOUTH OF THE CORNER DID NOT SUPPORT THE LOCATION OF THIS CORNER. I REESTABLISHED THIS CORNER ON A STRAIGHT LINE BETWEEN THE NORTHWEST AND NORTHEAST CORNERS OF SECTION 24 IN A NORTH-SOUTH FENCE LINE. I SET A 2" x 30" STAINLESS STEEL PIPE WITH A 4" GRANT COUNTY BRASS CAP AT THIS CORNER.

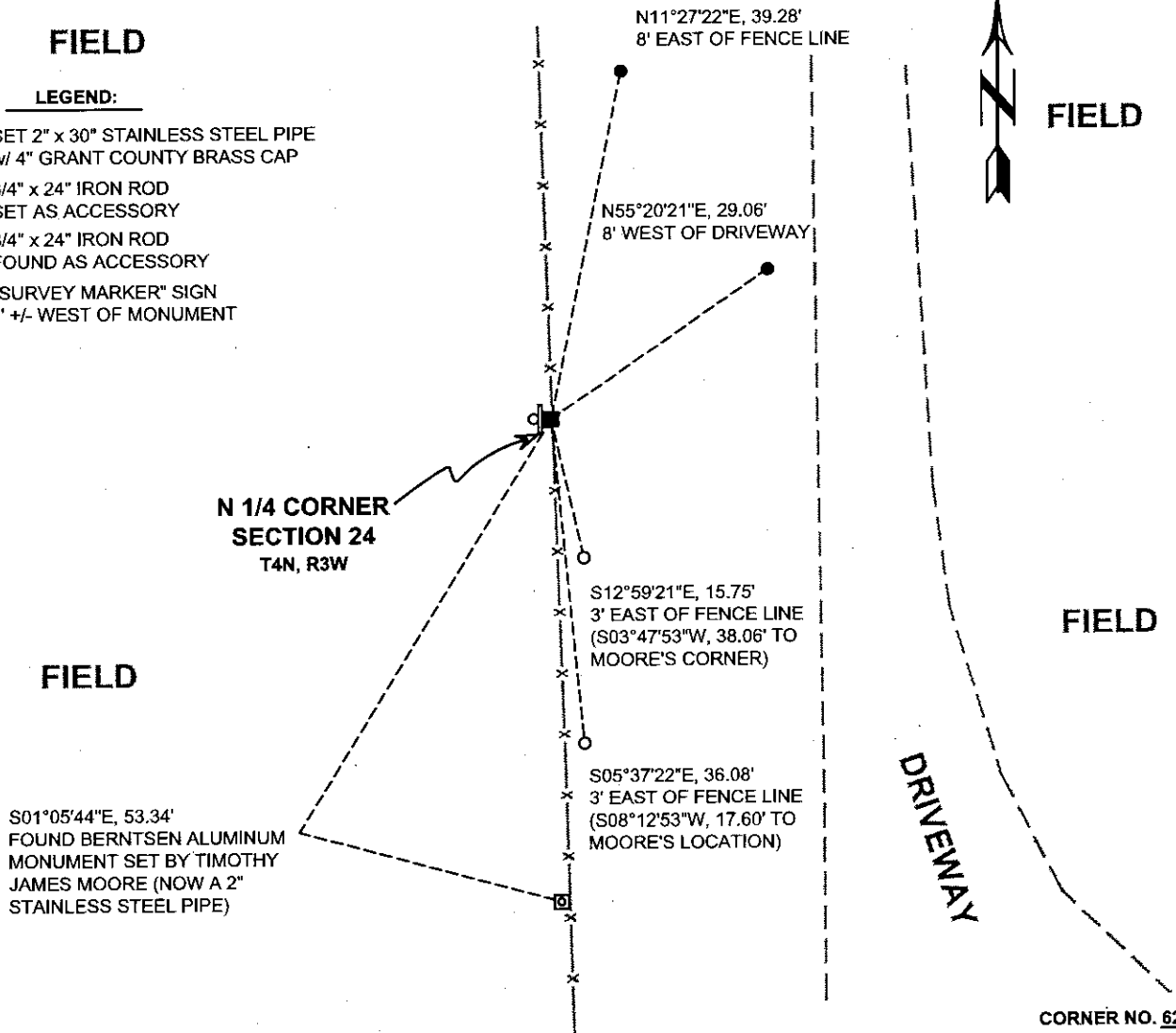
NOTE: I INITIALLY REMONUMENTED THE BERNTSEN MONUMENT WITH A 2" STAINLESS STEEL PIPE BEFORE REFUTING THAT CORNER LOCATION. THAT STAINLESS STEEL PIPE HAS BEEN LEFT IN PLACE FOR REFERENCE.

(C) IN THE PLAN VIEW DRAWING BELOW, PROVIDE REFERENCE TIES TO AT LEAST 4 WITNESS MONUMENTS. WITNESS MONUMENTS SHALL BE MADE OF CONCRETE, NATURAL STONE, IRON, BEARING TREES OR ANY OTHER EQUALLY DURABLE MATERIAL. DEPICT THE RELEVANT MONUMENTS AND REFERENCE TIES WITH SUFFICIENT DETAIL TO ENABLE ACCURATE RELOCATION OF THE CORNER IF THE CORNER MONUMENT IS DISTURBED.

(D) **FIELD**

LEGEND:

- SET 2" x 30" STAINLESS STEEL PIPE w/ 4" GRANT COUNTY BRASS CAP
- 3/4" x 24" IRON ROD SET AS ACCESSORY
- 3/4" x 24" IRON ROD FOUND AS ACCESSORY
- ⊞ "SURVEY MARKER" SIGN 1' +/- WEST OF MONUMENT



Remonumentation

- (E) DESCRIBE ANY MATERIAL DISCREPANCY BETWEEN THE LOCATION OF THE CORNER AS RESTORED OR REESTABLISHED AND THE LOCATION OF THAT CORNER AS PREVIOUSLY RESTORED OR REESTABLISHED BY DISTANCE AND DIRECTION. SHOW THE DISCREPANCY ON THE PLAN VIEW DRAWING UNDER (D), ABOVE. SHOW THE DISTANCES BETWEEN THE CORNER AS PREVIOUSLY RESTORED OR REESTABLISHED AND (1) THE CORNER AS RESTORED OR REESTABLISHED, AND (2) TO AT LEAST 2 OF THE WITNESS MONUMENTS SHOWN ON THE DRAWING IN (D) ABOVE.

THIS CORNER WAS PREVIOUSLY REMONUMENTED WITH A BERNTSEN ALUMINUM MONUMENT BY TIMOTHY MOORE.

- (F) WAS THE CORNER RESTORED THROUGH ACCEPTANCE OF (1) AN OBLITERATED EVIDENCE LOCATION, OR (2) A FOUND PERPETUATED LOCATION?

(1) AN OBLITERATED EVIDENCE LOCATION.

- (G&H) WAS THE CORNER REESTABLISHED THROUGH LOST CORNER PROPORTIONATE METHODS? IF SO, SHOW THE METHOD, INCLUDING THE DIRECTIONS AND DISTANCES TO OTHER PUBLIC LAND SURVEY CORNERS USED AS EVIDENCE OR USED FOR PROPORTIONING IN DETERMINING THE CORNER LOCATION.

N/A

CORNER HISTORY

THE ORIGINAL GOVERNMENT CORNER WAS ESTABLISHED BY ROBERT CLARK JR. IN THE FIRST QUARTER OF 1833.

IN A TIE SHEET DATED 9 MARCH 1988, TIMOTHY MOORE SET A BERNTSEN ALUMINUM MONUMENT AT THE CORNER AT A LOCATION HE PURPORTS TO MATCH OCCUPATION AS WELL AS TIES TO A 1950 HIGHWAY RIGHT-OF-WAY PLAT FOR STH '81.'

IN A CERTIFIED SURVEY MAP DATED 14 MARCH 2008, LARRY AUSTIN FOUND A BERNTSEN A-1 MONUMENT

- (I) I, JAY P. ADAMS, P.L.S. - 2879, CERTIFY THAT THE CORNER LOCATION SHOWN ON THIS RECORD WAS DETERMINED BY ME OR UNDER MY DIRECTION AND CONTROL AND THAT THIS U.S. PUBLIC LAND SURVEY MONUMENT RECORD IS CORRECT AND COMPLETE TO THE BEST OF MY KNOWLEDGE AND BELIEF.

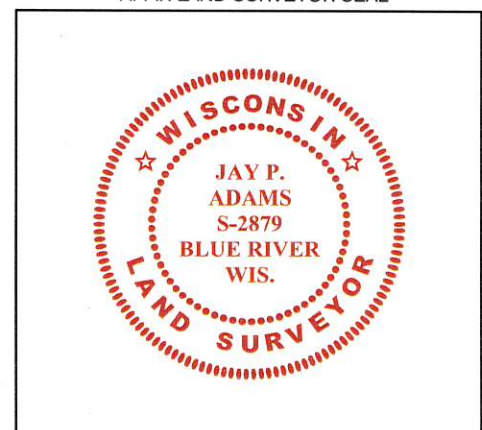


SIGNATURE

28 NOVEMBER 2018

DATE

AFFIX LAND SURVEYOR SEAL



62

U. S. PUBLIC LAND SURVEY MONUMENT RECORD

INSTRUCTIONS: This record shall show the location of the corner and shall include all of the following nine elements (a through i).

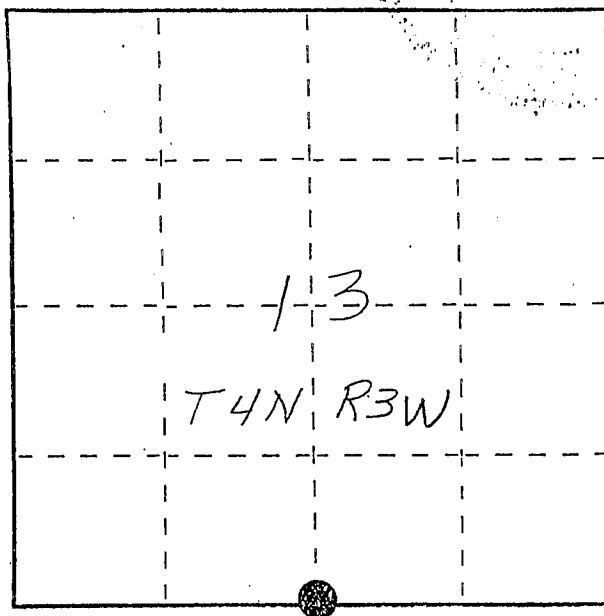
(a) Identify the corner by reference to the U.S. public land survey system.

● = Corner monument restored.

S¹/₄ corner section 13
T4N. R3W of the
4th P.M.
Town of South Lancaster
Grant County, Wisconsin.



APR 27 1988



(b) Describe any record evidence, monument evidence, occupational evidence, testimonial evidence or any other material evidence you considered, and whether the monument was found or placed.

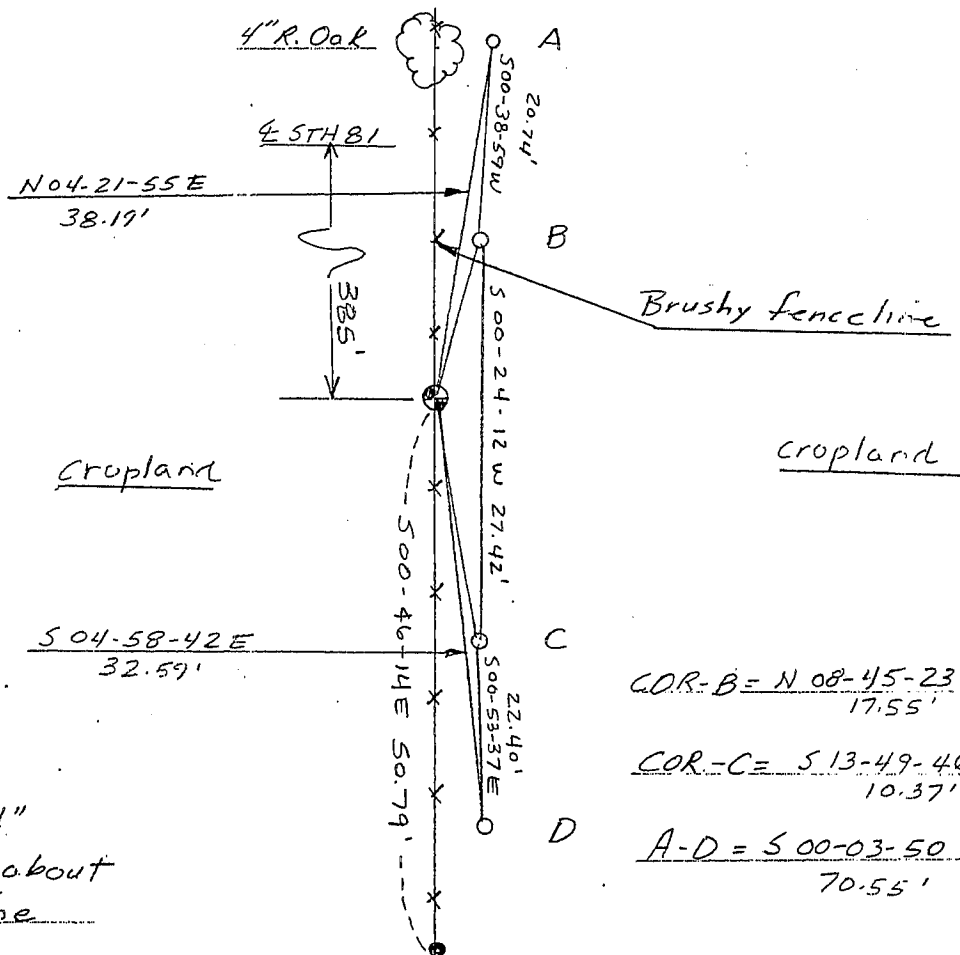
Monument set on line with found 1" iron pipes, not of record, and record distance south of the centerline of S.T.H. 81 as shown on the 1950 hwy. R/W plat. This location fits existing occupation lines. The approximate SE corner of section 13 was determined as shown on the 1950 R/W plat and it was found that the S¹/₄ corner is within a foot of being on line between the SW and SE corners. No other evidence found.

(c) In the plan view drawing below, provide reference ties to at least 4 witness monuments, or, if the location is within a municipality, to at least 2 witness monuments. (Witness monuments shall be made of concrete, natural stone, iron or other equally durable material, ~~except~~ ~~wood~~.) Describe witness monuments.

(d) Show a plan view drawing depicting the relevant monuments and reference ties which is sufficient in detail to enable accurate relocation of the corner monument if the corner monument is disturbed. Indicate north.



No Scale
Bearings - Wis. Grid.



● Berntsen A-1 mon.
set at grade

○ Ref. mon. - 3/4" x 24"
rebar w/cap.; set about
3' east of fence line

62

(e) Describe any material discrepancy between the location of the corner as restored or reestablished and the location of that corner as previously restored or reestablished by distance and direction. Show the discrepancy on the plan view drawing under (d), above. Show the distances between the corner as previously restored or reestablished and (1) the corner as restored or reestablished, and (2) to at least 2 of the witness monuments shown on the drawing in (d), above.

Monument set is 50.79' north of a 1" iron pipe which may have been intended to be the south 1/4 corner of section 13-4-3. There is no record of this iron being set so corner was reestablished as shown on the 1950 R/W plat

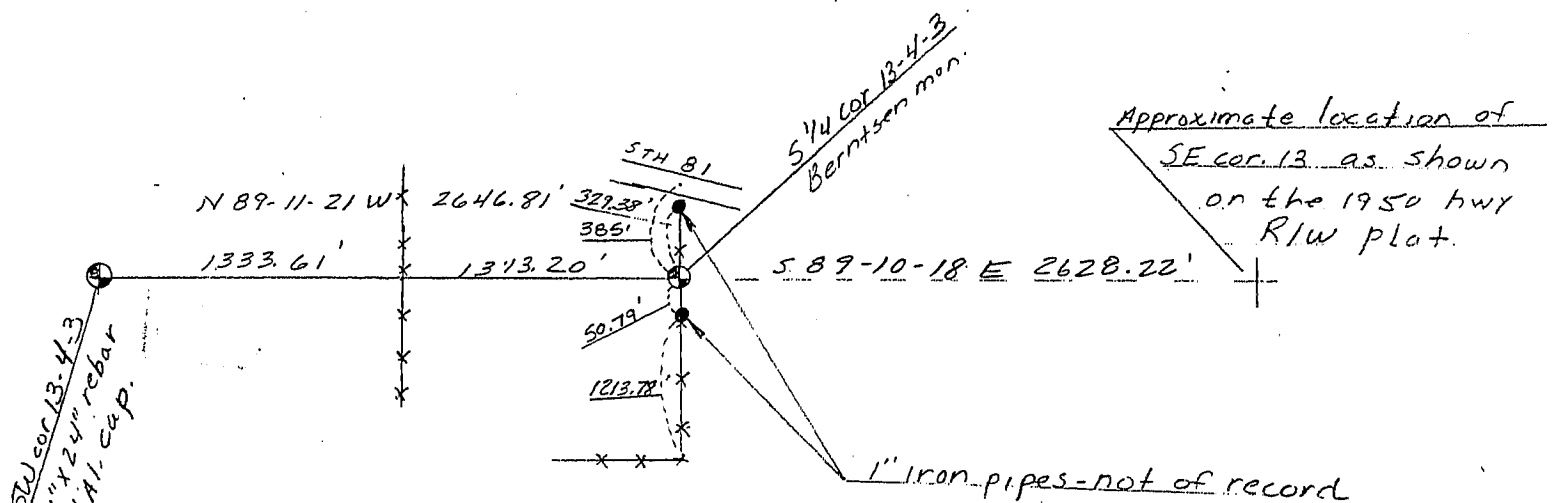
(f) Was the corner restored through acceptance of (1) an obliterated evidence location, or, (2) a found perpetuated location?

(g&h) Was the corner reestablished through lost corner proportionate methods? If so, show the method, including the directions and distances to other public land survey corners used as evidence or used for proportioning in determining the corner location?

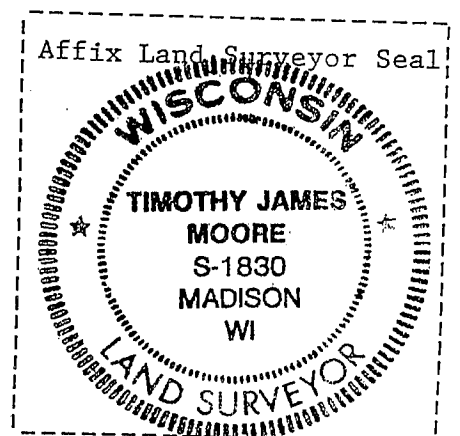


No Scale
Bearings - Wis Grid.

Sec. 13



Sec. 24



(i) I, Timothy J. Moore
(type or print name) certify that the corner location shown on this record was determined by me or under my direction and control and that this U.S. Public Land Survey Monument Record is correct and complete to the best of my knowledge and belief.

Timothy J. Moore

3-9-88