

Remonumentation

(E) DESCRIBE ANY MATERIAL DISCREPANCY BETWEEN THE LOCATION OF THE CORNER AS RESTORED OR REESTABLISHED AND THE LOCATION OF THAT CORNER AS PREVIOUSLY RESTORED OR REESTABLISHED BY DISTANCE AND DIRECTION. SHOW THE DISCREPANCY ON THE PLAN VIEW DRAWING UNDER (D), ABOVE. SHOW THE DISTANCES BETWEEN THE CORNER AS PREVIOUSLY RESTORED OR REESTABLISHED AND (1) THE CORNER AS RESTORED OR REESTABLISHED, AND (2) TO AT LEAST 2 OF THE WITNESS MONUMENTS SHOWN ON THE DRAWING IN (D) ABOVE.

N/A

(F) WAS THE CORNER RESTORED THROUGH ACCEPTANCE OF (1) AN OBLITERATED EVIDENCE LOCATION, OR (2) A FOUND PERPETUATED LOCATION?

(2) A FOUND PERPETUATED LOCATION.

(G&H) WAS THE CORNER REESTABLISHED THROUGH LOST CORNER PROPORTIONATE METHODS? IF SO, SHOW THE METHOD, INCLUDING THE DIRECTIONS AND DISTANCES TO OTHER PUBLIC LAND SURVEY CORNERS USED AS EVIDENCE OR USED FOR PROPORTIONING IN DETERMINING THE CORNER LOCATION.

N/A

CORNER HISTORY

THE ORIGINAL GOVERNMENT CORNER WAS ESTABLISHED BY SYLVESTER SIBLEY IN THE SECOND QUARTER OF 1832.

IN A CERTIFIED SURVEY MAP DATED 14 MARCH 2008, LARRY AUSTIN REPORTED FINDING A 1" REBAR WITH ALUMINUM CAP.

IN A TIE SHEET DATED 10 MAY 2008 LARRY AUSTIN SET A 1" x 30" REBAR WITH A GRANT COUNTY ALUMINUM CAP AT A LOCATION OF OCCUPATIONAL EVIDENCE.

IN A PLAT OF SURVEY LAST REVISED 23 AUGUST 2012, AARON AUSTIN FOUND A 1" REBAR WITH ALUMINUM CAP AT THE CORNER.

AFFIX LAND SURVEYOR SEAL

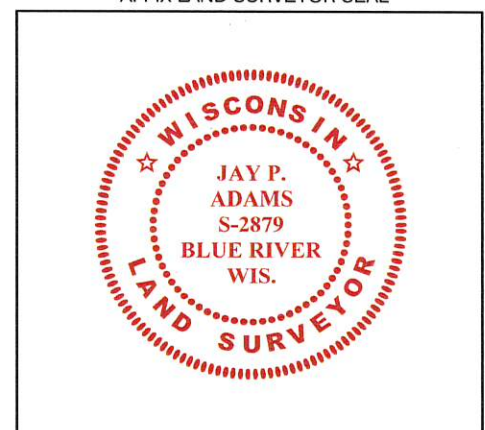
(I) I, JAY P. ADAMS, P.L.S. - 2879, CERTIFY THAT THE CORNER LOCATION SHOWN ON THIS RECORD WAS DETERMINED BY ME OR UNDER MY DIRECTION AND CONTROL AND THAT THIS U.S. PUBLIC LAND SURVEY MONUMENT RECORD IS CORRECT AND COMPLETE TO THE BEST OF MY KNOWLEDGE AND BELIEF.



28 NOVEMBER 2018

SIGNATURE

DATE



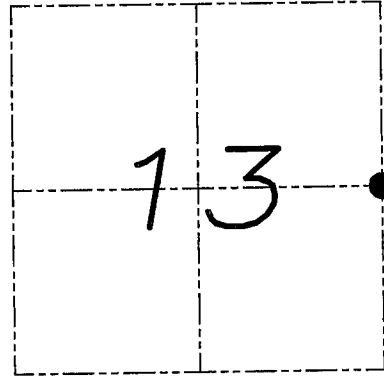
U.S. PUBLIC LAND SURVEY MONUMENT RECORD

Section 13, Town 4 North Range 3 West, Town of South Lancaster, Grant County, Wisconsin

CERTIFICATE

I, Larry L. Austin, do hereby certify that the corner location on this record was determined by me and/or under my direct supervision and that this U.S. public land survey monument record is correct and complete to the best of my knowledge and belief.

Larry L. Austin
 Larry L. Austin, 5-3903 903
 LANCASTER, WI
 LAND SURVEYOR
 5.10.08
 date



● = CORNER LOCATION

HISTORY OF CORNER

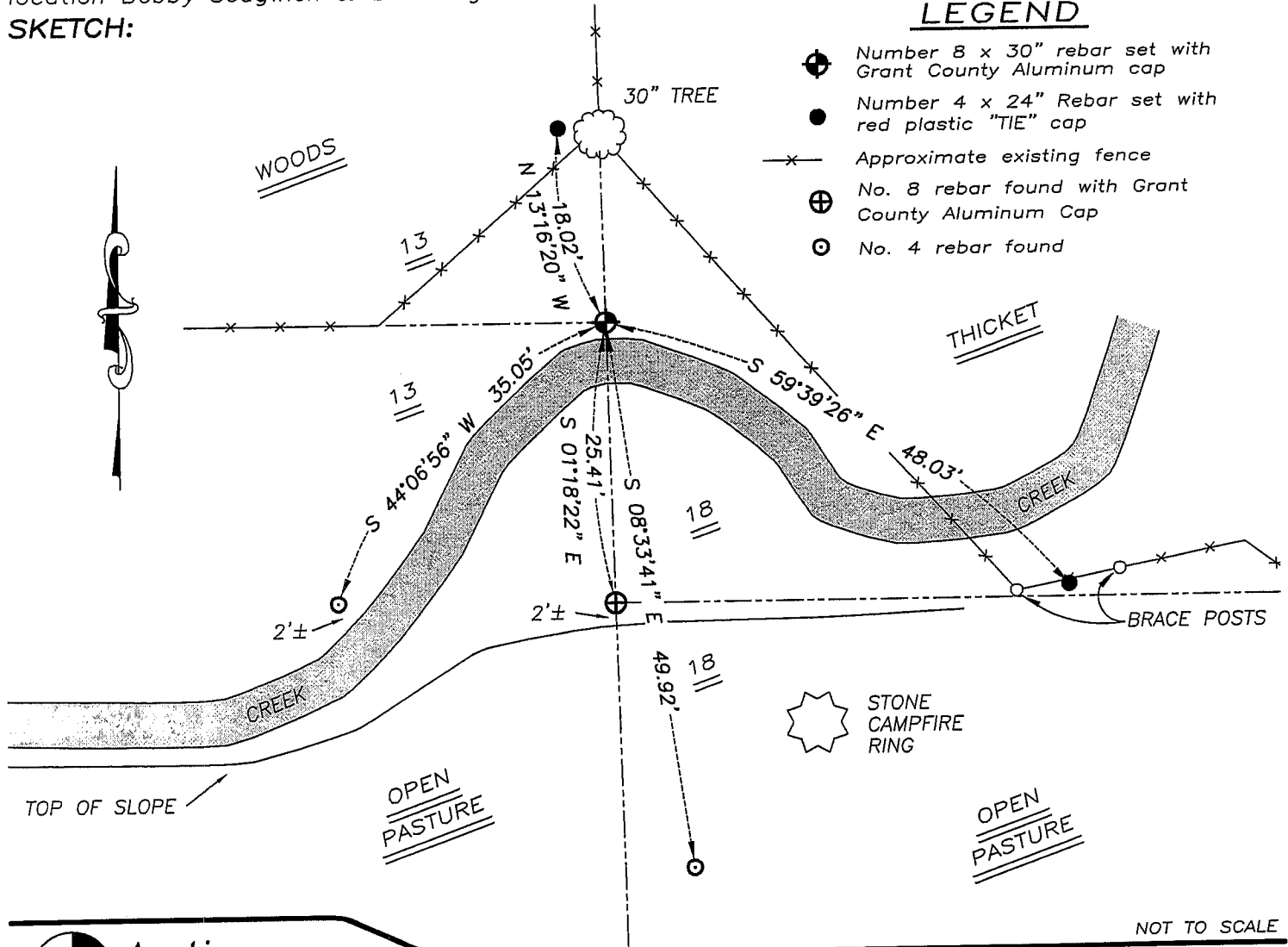
Corner was originally set by Lyon.
 No other record of the corner was found.

CORNER EVIDENCE FOUND

I reset the corner at the projection of occupied lines.
 Verified this location using EDM & GPS methods.

DESCRIPTION OF CORNER AND WITNESS MONUMENTS, references and accessories used to perpetuate the original or re-established location of this corner. Witnesses to monument location Bobby Sedgwick & Brad Digman & Shane Austin

SKETCH:



LEGEND

- Number 8 x 30" rebar set with Grant County Aluminum cap
- Number 4 x 24" Rebar set with red plastic "TIE" cap
- x- Approximate existing fence
- ⊕ No. 8 rebar found with Grant County Aluminum Cap
- No. 4 rebar found



Austin Engineering LLC

4211 HWY 81 E, LANCASTER, WI 53813
 PHONE 608-723-6363 FAX 608-723-6702

JOB NUMBER 07S295
 FIELDBOOK: TDSR, 2802
 G:\T4NR2W\T4NR2W
 H:\TIE\T4NR3W\60

DRAWN BY: SW AUSTIN
 APPROVED: LL AUSTIN

NOT TO SCALE