

GRANT COUNTY U.S. PUBLIC LAND SURVEY MONUMENT RECORD

INSTRUCTIONS: THIS RECORD SHALL SHOW THE LOCATION OF THE CORNER AND SHALL INCLUDE ALL OF THE FOLLOWING ELEMENTS (A THROUGH I).

(A) IDENTIFY THE CORNER AS REFERENCED TO THE U.S. PUBLIC LAND SURVEY SYSTEM

■ = CORNER MONUMENT RESTORED

WITNESSES TO CORNER LOCATION:

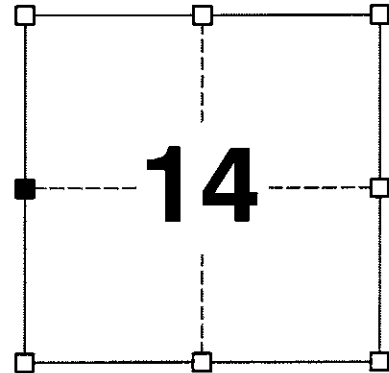
JAY P. ADAMS
STEVEN A. ALT

GEOGRAPHIC COORDINATES,
NAD 83 (2011) ADJUSTMENT:

LATITUDE: 42° 49' 14.72285"
LONGITUDE: 90° 42' 13.53241"

WISCONSIN COORDINATE REFERENCE SYSTEM (WISCRS),
GRANT COUNTY, NAD 83 (2011) ADJUSTMENT:

NORTHING: 513,736.12
EASTING: 820,822.23



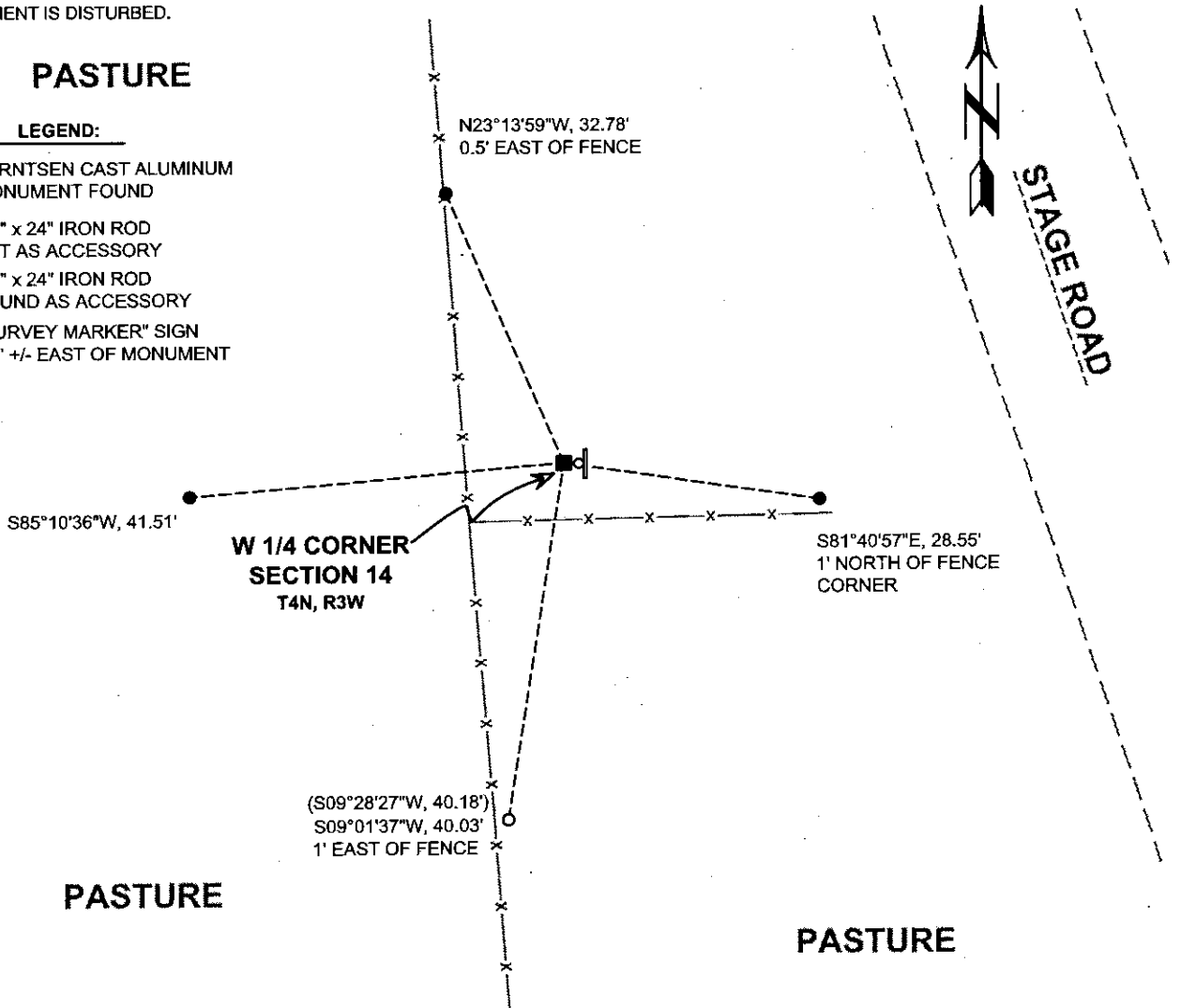
SECTION 14
TOWNSHIP 4 NORTH, RANGE 3 WEST
TOWN OF SOUTH LANCASTER

(B) DESCRIBE ANY RECORD EVIDENCE, MONUMENT EVIDENCE, OCCUPATIONAL EVIDENCE, TESTIMONIAL EVIDENCE OR ANY OTHER MATERIAL EVIDENCE YOU CONSIDERED, AND WHETHER THE MONUMENT WAS FOUND OR PLACED.

I COULD FIND NO MONUMENTS OR BEARING TREES FROM THE ORIGINAL GOVERNMENT SURVEY OR THE HISTORIC COUNTY SURVEYORS' SUBSEQUENT RESURVEYS. I SEARCHED THE AREA FOR THE STONE REPORTED BY BARBER BUT WAS UNABLE RECOVER IT. EXAMINING HISTORICAL AERIAL PHOTOS, IT APPEARS THAT THIS AREA WAS HEAVILY PASTURED WHICH COULD HAVE LEAD TO THE DISTURBANCE OF THE STONE. I RECOVERED THE BERNTSEN CAST ALUMINUM MONUMENT AND ACCEPTED THIS LOCATION AS THE BEST AVAILABLE EVIDENCE OF THE CORNER AND LEFT IT IN PLACE BECAUSE OF ADEQUATE STABILITY.

(C) IN THE PLAN VIEW DRAWING BELOW, PROVIDE REFERENCE TIES TO AT LEAST 4 WITNESS MONUMENTS. WITNESS MONUMENTS SHALL BE MADE OF CONCRETE, NATURAL STONE, IRON, BEARING TREES OR ANY OTHER EQUALLY DURABLE MATERIAL. DEPICT THE RELEVANT MONUMENTS AND REFERENCE TIES WITH SUFFICIENT DETAIL TO ENABLE ACCURATE RELOCATION OF THE CORNER IF THE CORNER MONUMENT IS DISTURBED.

- (D) **PASTURE**
- LEGEND:**
- BERNTSEN CAST ALUMINUM MONUMENT FOUND
 - 3/4" x 24" IRON ROD SET AS ACCESSORY
 - 3/4" x 24" IRON ROD FOUND AS ACCESSORY
 - ⊞ "SURVEY MARKER" SIGN 0.5' +/- EAST OF MONUMENT



Remonumentation

(E) DESCRIBE ANY MATERIAL DISCREPANCY BETWEEN THE LOCATION OF THE CORNER AS RESTORED OR REESTABLISHED AND THE LOCATION OF THAT CORNER AS PREVIOUSLY RESTORED OR REESTABLISHED BY DISTANCE AND DIRECTION. SHOW THE DISCREPANCY ON THE PLAN VIEW DRAWING UNDER (D), ABOVE. SHOW THE DISTANCES BETWEEN THE CORNER AS PREVIOUSLY RESTORED OR REESTABLISHED AND (1) THE CORNER AS RESTORED OR REESTABLISHED, AND (2) TO AT LEAST 2 OF THE WITNESS MONUMENTS SHOWN ON THE DRAWING IN (D) ABOVE.

N/A

(F) WAS THE CORNER RESTORED THROUGH ACCEPTANCE OF (1) AN OBLITERATED EVIDENCE LOCATION, OR (2) A FOUND PERPETUATED LOCATION?

(2) A FOUND PERPETUATED LOCATION.

(G&H) WAS THE CORNER REESTABLISHED THROUGH LOST CORNER PROPORTIONATE METHODS? IF SO, SHOW THE METHOD, INCLUDING THE DIRECTIONS AND DISTANCES TO OTHER PUBLIC LAND SURVEY CORNERS USED AS EVIDENCE OR USED FOR PROPORTIONING IN DETERMINING THE CORNER LOCATION.

N/A

CORNER HISTORY

THE ORIGINAL GOVERNMENT CORNER WAS ESTABLISHED BY ROBERT CLARK JR. IN THE FIRST QUARTER OF 1833.

IN A SURVEY DATED 17 JANUARY 1846 GEO STUNTZ SET THE CORNER SINGLE PROPORTIONATELY.

IN A SURVEY DATED 9 SEPTEMBER 1878, JOEL BARBER FOUND A STONE AND REPLACED IT WITH A BETTER ONE.

IN A TIE SHEET DATED 9 MARCH 1988 TIMOTHY MOORE SET A BERNTSEN CAST ALUMINUM MONUMENT HALFWAY BETWEEN THE NORTHWEST AND SOUTHWEST CORNERS OF SECTION 14 AT THE INTERSECTION WITH A PROJECTED FENCELINE FROM THE EAST.

LARRY AUSTIN RECOVERED A BERNTSEN A-1 MONUMENT IN PLATS OF SURVEY DATED 2 JULY 2008 AS WELL AS IN CERTIFIED SURVEY MAPS DATED 13 MARCH 2003, 6 JULY 2009 AND 22 APRIL 2010.

IN A CERTIFIED SURVEY MAP DATED 25 APRIL 2011, AARON AUSTIN FOUND A BERNTSEN CAST ALUMINUM MONUMENT.

(I) I, JAY P. ADAMS, P.L.S. - 2879, CERTIFY THAT THE CORNER LOCATION SHOWN ON THIS RECORD WAS DETERMINED BY ME OR UNDER MY DIRECTION AND CONTROL AND THAT THIS U.S. PUBLIC LAND SURVEY MONUMENT RECORD IS CORRECT AND COMPLETE TO THE BEST OF MY KNOWLEDGE AND BELIEF.

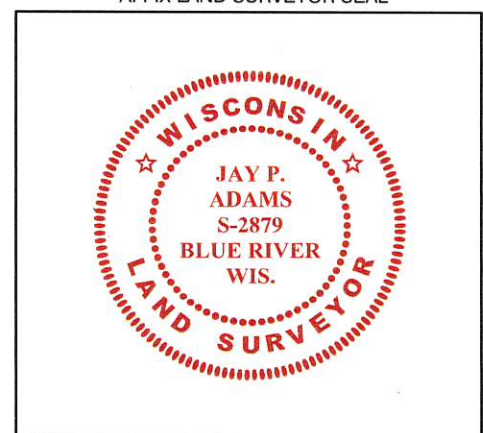


SIGNATURE

28 NOVEMBER 2018

DATE

AFFIX LAND SURVEYOR SEAL



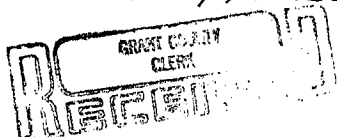
U. S. PUBLIC LAND SURVEY MONUMENT RECORD

INSTRUCTIONS: This record shall show the location of the corner and shall include all of the following nine elements (a through i).

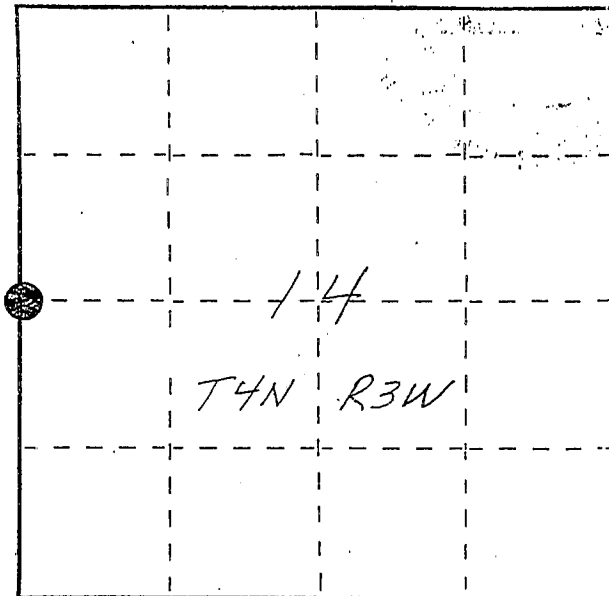
(a) Identify the corner by reference to the U.S. public land survey system.

● = Corner monument restored.

W 1/4 corner section 14
 T4N R3W of the
 4th P.M.
 Town of South Lancaster
 Grant County, Wisconsin.



APR 27 1988

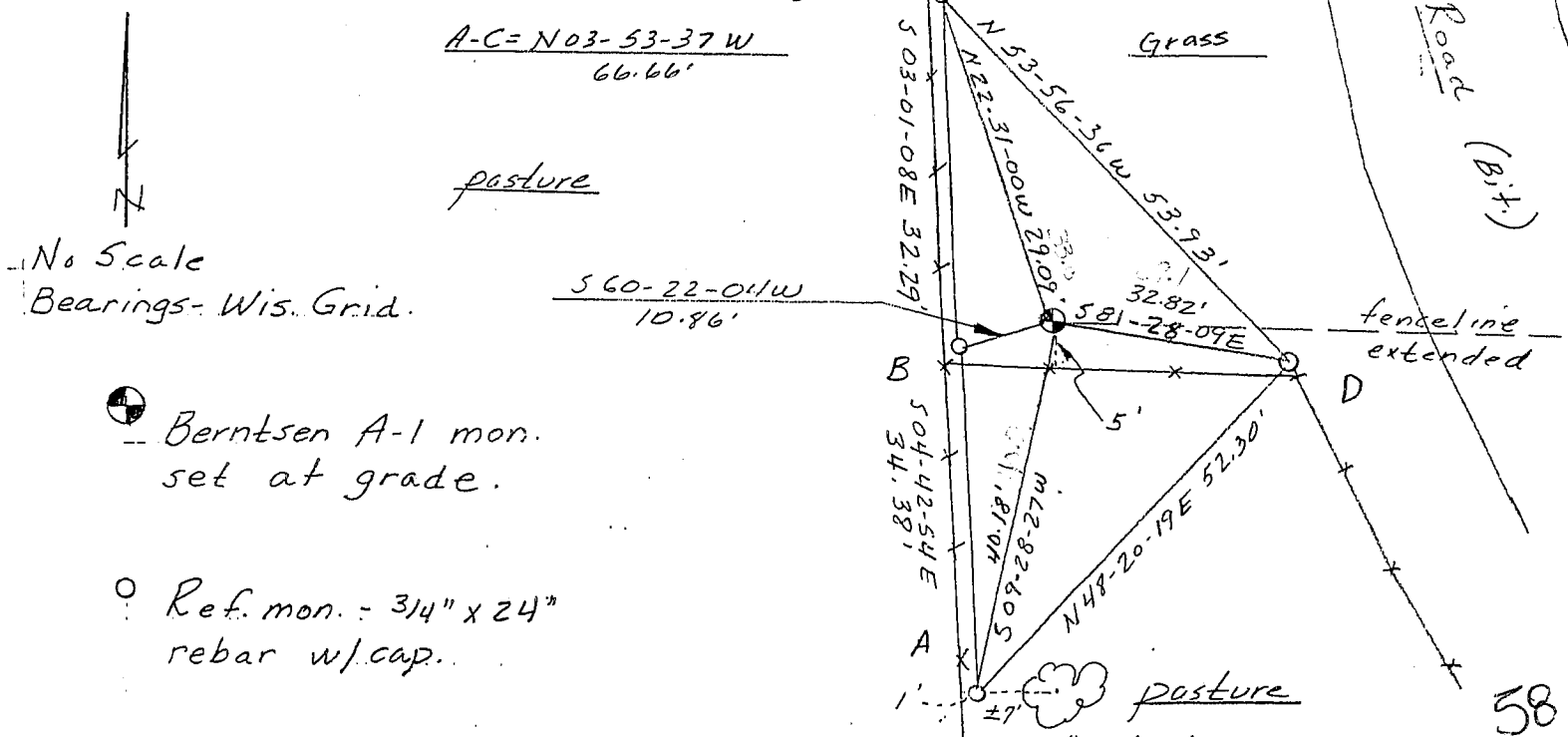


(b) Describe any record evidence, monument evidence, occupational evidence, testimonial evidence or any other material evidence you considered, and whether the monument was found or placed.

Monument set on line between reestablished NW corner and SW corner of section 14 and at the intersection with fence line extended from the east. This location fits well with other reestablished corners of the section. Some remains of an ancient fence running east-west were found about 45' southerly of corner and the distance measured to the creek to south was 264'. Recorded dist. is 231'. Chose to hold existing evidence because it fit better.

(c) In the plan view drawing below, provide reference ties to at least 4 witness monuments, or, if the location is within a municipality, to at least 2 witness monuments. (Witness monuments shall be made of concrete, natural stone, iron or other equally durable material, ~~except~~ overall wood.) Describe witness monuments.

(d) Show a plan view drawing depicting the relevant monuments and reference ties which is sufficient in detail to enable accurate relocation of the corner monument if the corner monument is disturbed. Indicate north.



No Scale
 Bearings - Wis. Grid.

● Berntsen A-1 mon. set at grade.

○ Ref. mon. - 3/4" x 24" rebar w/cap.

