

GRANT COUNTY U.S. PUBLIC LAND SURVEY MONUMENT RECORD

INSTRUCTIONS: THIS RECORD SHALL SHOW THE LOCATION OF THE CORNER AND SHALL INCLUDE ALL OF THE FOLLOWING ELEMENTS (A THROUGH I).

(A) IDENTIFY THE CORNER AS REFERENCED TO THE U.S. PUBLIC LAND SURVEY SYSTEM

■ = CORNER MONUMENT RESTORED

WITNESSES TO CORNER LOCATION:

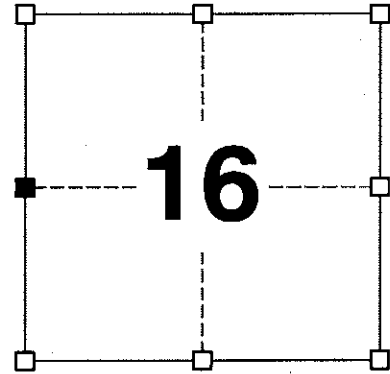
JAY P. ADAMS
TYLER D. ATKINSON

GEOGRAPHIC COORDINATES,
NAD 83 (2011) ADJUSTMENT:

LATITUDE: 42° 49' 15.06007"
LONGITUDE: 90° 44' 34.03274"

WISCONSIN COORDINATE REFERENCE SYSTEM (WISCRS),
GRANT COUNTY, NAD 83 (2011) ADJUSTMENT:

NORTHING: 513,760.73
EASTING: 810,350.72



SECTION 16
TOWNSHIP 4 NORTH, RANGE 3 WEST
TOWN OF SOUTH LANCASTER

(B) DESCRIBE ANY RECORD EVIDENCE, MONUMENT EVIDENCE, OCCUPATIONAL EVIDENCE, TESTIMONIAL EVIDENCE OR ANY OTHER MATERIAL EVIDENCE YOU CONSIDERED, AND WHETHER THE MONUMENT WAS FOUND OR PLACED.

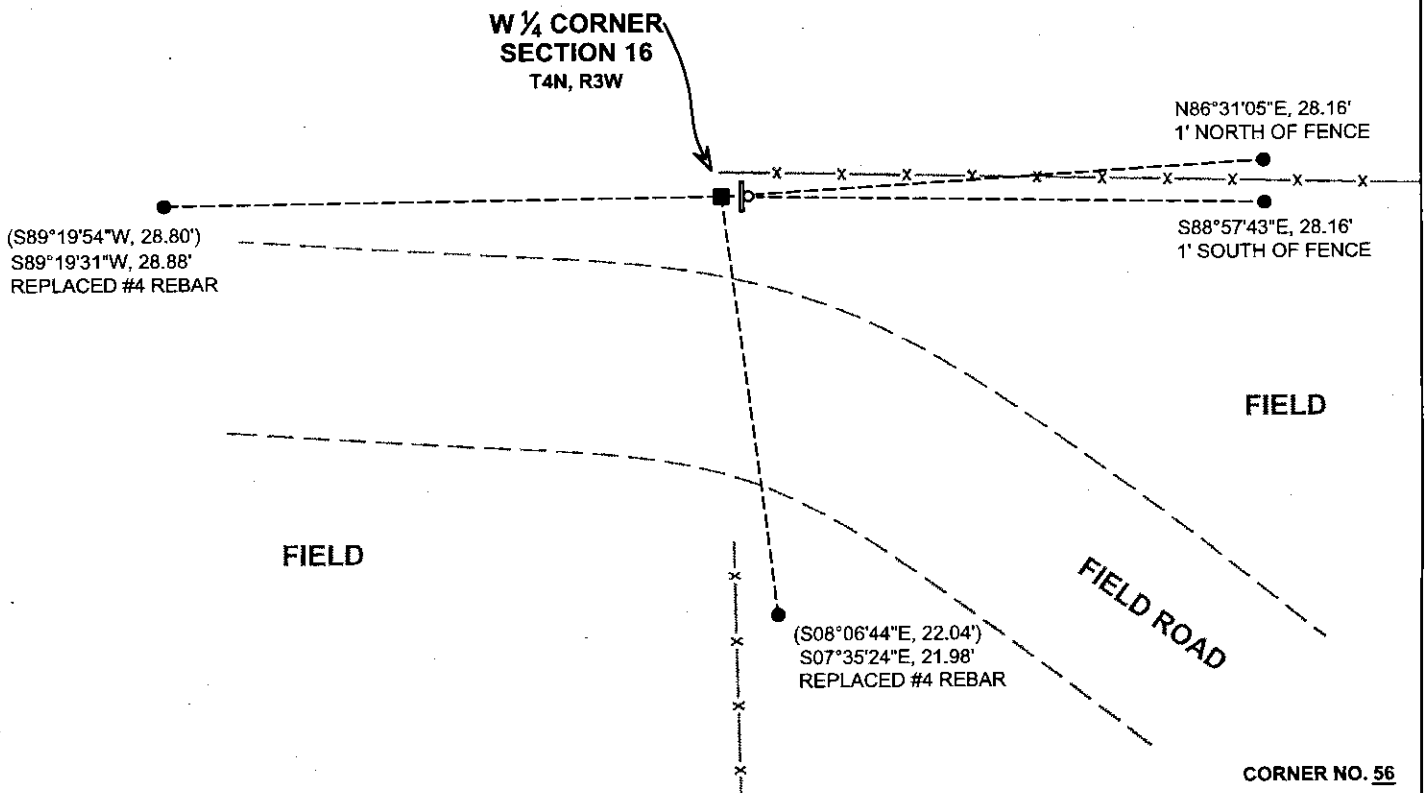
I COULD FIND NO MONUMENTS OR BEARING TREES FROM THE ORIGINAL GOVERNMENT SURVEY OR THE HISTORIC COUNTY SURVEYOR'S SUBSEQUENT RESURVEY OR THE PIPE POST IN CONCRETE NOTED BY KROHN AND AUSTIN. I UTILIZED TWO EXISTING TIES AND MEASUREMENTS TO AREA SECTION CORNERS TO REESTABLISH THIS CORNER. I ACCEPTED THIS LOCATION AS THE BEST AVAILABLE EVIDENCE OF THE ORIGINAL GOVERNMENT CORNER AND REMONUMENTED IT WITH A 2" x 30" STAINLESS STEEL PIPE WITH A 4" GRANT COUNTY BRASS CAP.

(C) IN THE PLAN VIEW DRAWING BELOW, PROVIDE REFERENCE TIES TO AT LEAST 4 WITNESS MONUMENTS. WITNESS MONUMENTS SHALL BE MADE OF CONCRETE, NATURAL STONE, IRON, BEARING TREES OR ANY OTHER EQUALLY DURABLE MATERIAL. DEPICT THE RELEVANT MONUMENTS AND REFERENCE TIES WITH SUFFICIENT DETAIL TO ENABLE ACCURATE RELOCATION OF THE CORNER IF THE CORNER MONUMENT IS DISTURBED.

(D)

LEGEND:

- SET 2" x 30" STAINLESS STEEL PIPE w/ 4" GRANT COUNTY BRASS CAP
- 3/4" x 24" IRON ROD SET AS ACCESSORY
- ⊓ "SURVEY MARKER" SIGN 1' +/- EAST OF MONUMENT



CORNER NO. 56

Remonumentation

(E) DESCRIBE ANY MATERIAL DISCREPANCY BETWEEN THE LOCATION OF THE CORNER AS RESTORED OR REESTABLISHED AND THE LOCATION OF THAT CORNER AS PREVIOUSLY RESTORED OR REESTABLISHED BY DISTANCE AND DIRECTION. SHOW THE DISCREPANCY ON THE PLAN VIEW DRAWING UNDER (D), ABOVE. SHOW THE DISTANCES BETWEEN THE CORNER AS PREVIOUSLY RESTORED OR REESTABLISHED AND (1) THE CORNER AS RESTORED OR REESTABLISHED, AND (2) TO AT LEAST 2 OF THE WITNESS MONUMENTS SHOWN ON THE DRAWING IN (D) ABOVE.

N/A

(F) WAS THE CORNER RESTORED THROUGH ACCEPTANCE OF (1) AN OBLITERATED EVIDENCE LOCATION, OR (2) A FOUND PERPETUATED LOCATION?

(2) A FOUND PERPETUATED LOCATION.

(G&H) WAS THE CORNER REESTABLISHED THROUGH LOST CORNER PROPORTIONATE METHODS? IF SO, SHOW THE METHOD, INCLUDING THE DIRECTIONS AND DISTANCES TO OTHER PUBLIC LAND SURVEY CORNERS USED AS EVIDENCE OR USED FOR PROPORTIONING IN DETERMINING THE CORNER LOCATION.

N/A

CORNER HISTORY

THE ORIGINAL GOVERNMENT CORNER WAS ESTABLISHED BY ROBERT CLARK, JR. IN THE FIRST QUARTER OF 1833.

IN A SURVEY DATED 16 DECEMBER 1842, FREEMAN WAS AT THE CORNER.

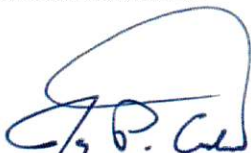
IN A SURVEY DATED 25 MAY 1976, DAVID KROHN NOTES A 3" DIAMETER PIPE POST IN CONCRETE.

IN A CERTIFIED SURVEY MAP DATED 20 AUGUST 1998 AND A SUBSEQUENT TIE SHEET DATED 10 OCTOBER 1998, LARRY AUSTIN NOTES A PIPE POST IN CONCRETE.

IN PLATS OF SURVEY DATED 13 FEBRUARY AND 21 JULY 2008, LARRY AUSTIN AGAIN REPORTS FINDING THE PIPE POST IN CONCRETE.

AFFIX LAND SURVEYOR SEAL

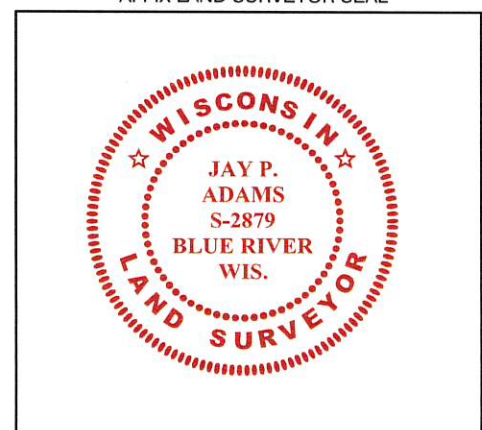
(I) I, JAY P. ADAMS, P.L.S. - 2879, CERTIFY THAT THE CORNER LOCATION SHOWN ON THIS RECORD WAS DETERMINED BY ME OR UNDER MY DIRECTION AND CONTROL AND THAT THIS U.S. PUBLIC LAND SURVEY MONUMENT RECORD IS CORRECT AND COMPLETE TO THE BEST OF MY KNOWLEDGE AND BELIEF.



SIGNATURE

20 NOVEMBER 2018

DATE



GRANT COUNTY CERTIFIED LAND CORNER

CORNER NO. 56

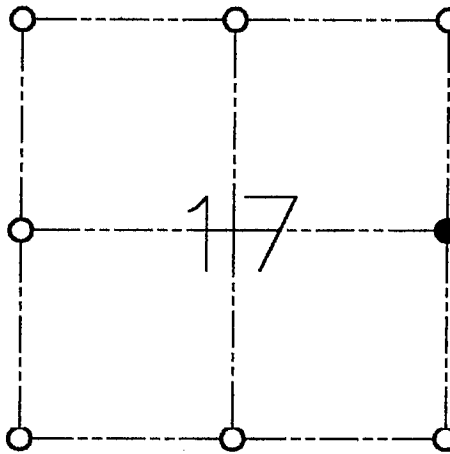
CERTIFICATE:

I, LARRY L. AUSTIN, DO HEREBY CERTIFY THAT ON 11 DAY OF NOVEMBER, 1998, I FOUND OCCUPATIONAL EVIDENCE OF THE EAST 1/4 CORNER OF SECTION 17, TOWN 4 NORTH, RANGE 3 WEST OF THE FOURTH PRINCIPAL MERIDIAN, AND I RE-ESTABLISHED SAID CORNER ACCORDING TO THE WISCONSIN STATUTES AS SHOWN AND DESCRIBED HEREON.

DATED THIS 10 DAY OF OCT 1998

Larry L. Austin
LARRY L. AUSTIN S-1903

T 4 N R 3 W
TOWN OF SOUTH LANCASTER



● = CORNER LOCATION



SEAL

HISTORY OF ORIGINAL CORNER ESTABLISHMENT:

CORNER SET IN 1833 BY ROBERT CLARK.
HOMER RALPH TIED TO CORNER (NO MONUMENT).

DESCRIPTION OF CORNER EVIDENCE FOUND:

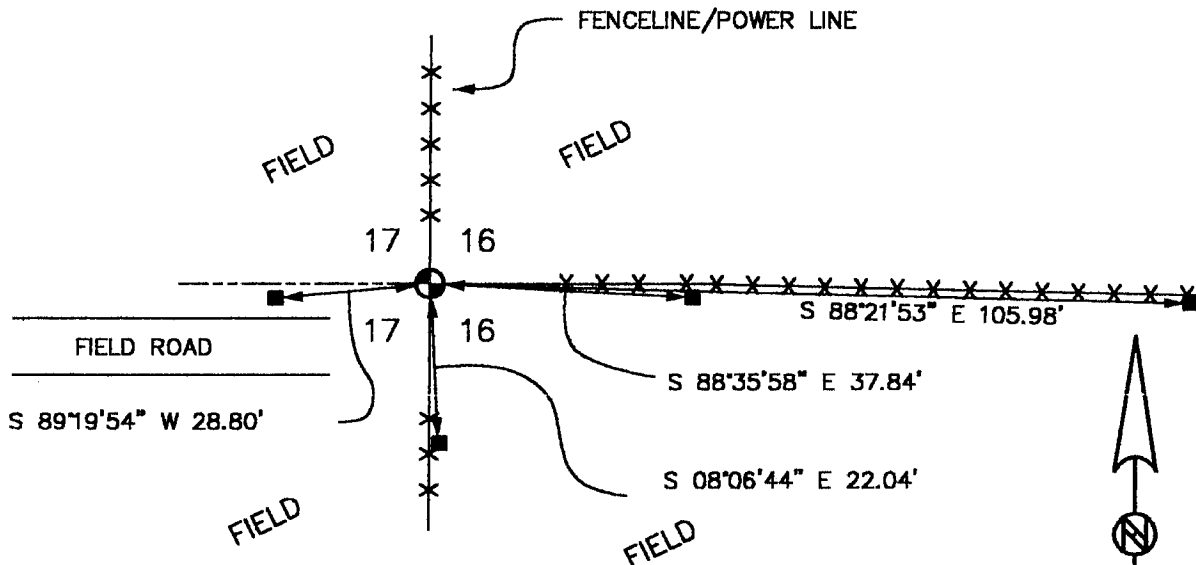
A PIPE POST AT AN OCCUPIED FENCE CORNER. VERIFIED
LOCATION USING G.P.S. AND E.D.M. METHODS.

DESCRIPTION OF CORNER AND WITNESS MONUMENTS, REFERENCES AND ACCESSORIES USED TO PERPETUATE THE ORIGINAL OR RE-ESTABLISHED LOCATION OF THIS CORNER:

WITNESS TO THE CORNER LOCATION:

BOBBY SEDGWICK
SHELBY BLINDERT

SKETCH:



LEGEND

● PIPE POST IN CONCRETE FOUND

■ NO. 4 X 16" REBAR SET

NOT TO SCALE



C:\EPSA\PROGRAM\TIE\T4NR3W\17E