

## GRANT COUNTY U.S. PUBLIC LAND SURVEY MONUMENT RECORD

INSTRUCTIONS: THIS RECORD SHALL SHOW THE LOCATION OF THE CORNER AND SHALL INCLUDE ALL OF THE FOLLOWING ELEMENTS (A THROUGH I).

(A) IDENTIFY THE CORNER AS REFERENCED TO THE U.S. PUBLIC LAND SURVEY SYSTEM

■ = CORNER MONUMENT RESTORED

WITNESSES TO CORNER LOCATION:

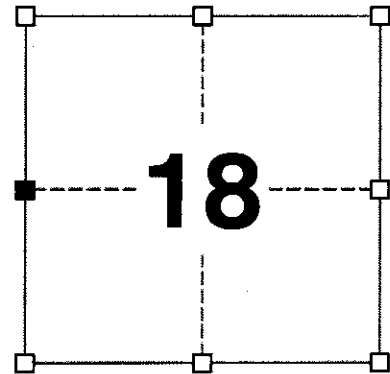
JAY P. ADAMS  
TYLER D. ATKINSON

GEOGRAPHIC COORDINATES,  
NAD 83 (2011) ADJUSTMENT:

LATITUDE: 42° 49' 16.90776"  
LONGITUDE: 90° 46' 57.93392"

WISCONSIN COORDINATE REFERENCE SYSTEM (WISCRS),  
GRANT COUNTY, NAD 83 (2011) ADJUSTMENT:

NORTHING: 513,943.06  
EASTING: 799,625.74



SECTION 18  
TOWNSHIP 4 NORTH, RANGE 3 WEST  
TOWN OF SOUTH LANCASTER

(B) DESCRIBE ANY RECORD EVIDENCE, MONUMENT EVIDENCE, OCCUPATIONAL EVIDENCE, TESTIMONIAL EVIDENCE OR ANY OTHER MATERIAL EVIDENCE YOU CONSIDERED, AND WHETHER THE MONUMENT WAS FOUND OR PLACED.

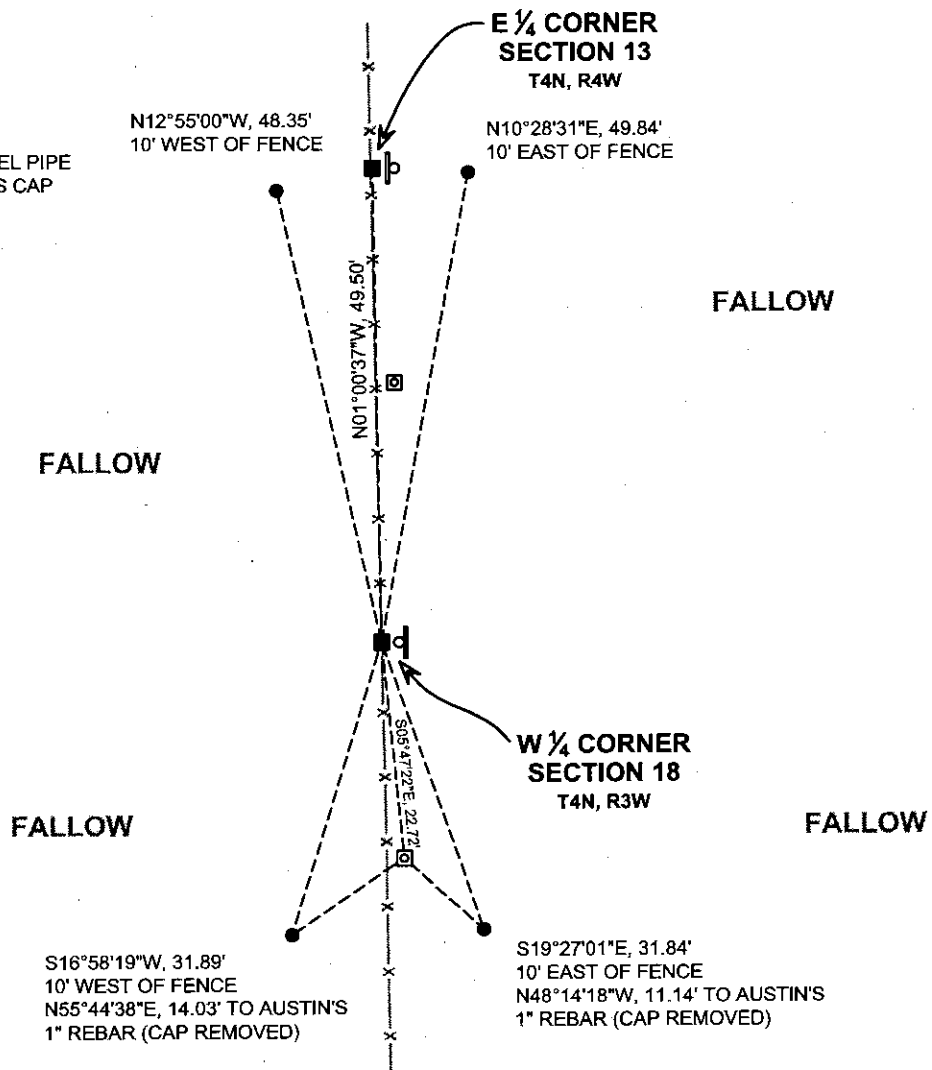
I COULD FIND NO MONUMENTS OR BEARING TREES FROM THE HISTORIC COUNTY SURVEYOR'S SURVEY. I RECOVERED THE 1" REBAR AND ALUMINUM CAP REFERENCED BY AUSTIN. THE LOCATION OF THIS CORNER ALONG WITH THE EAST QUARTER CORNER OF SECTION 13, T4N, R4W DO NOT COINCIDE WITH OCCUPATIONAL EVIDENCE. EAST-WEST OCCUPATIONAL EVIDENCE LOCATED NORTH, SOUTH AND WEST OF THIS CORNER WAS USED TO REESTABLISH THIS CORNER IN A NORTH-SOUTH FENCE. I REMONUMENTED THIS CORNER WITH A 2" x 30" STAINLESS STEEL PIPE WITH A 4" GRANT COUNTY BRASS CAP. AUSTIN'S MONUMENT WAS LEFT IN PLACE BUT I REMOVED THE ALUMINUM CAP FROM IT.

(C) IN THE PLAN VIEW DRAWING BELOW, PROVIDE REFERENCE TIES TO AT LEAST 4 WITNESS MONUMENTS. WITNESS MONUMENTS SHALL BE MADE OF CONCRETE, NATURAL STONE, IRON, BEARING TREES OR ANY OTHER EQUALLY DURABLE MATERIAL. DEPICT THE RELEVANT MONUMENTS AND REFERENCE TIES WITH SUFFICIENT DETAIL TO ENABLE ACCURATE RELOCATION OF THE CORNER IF THE CORNER MONUMENT IS DISTURBED.

(D)

**LEGEND:**

- SET 2" x 30" STAINLESS STEEL PIPE w/ 4" GRANT COUNTY BRASS CAP
- ⊠ FOUND 1" REBAR (CAP NOW REMOVED)
- 3/4" x 24" IRON ROD SET AS ACCESSORY
- Ⓧ "SURVEY MARKER" SIGN 1' +/- EAST OF MONUMENT



# Remonumentation

- (E) DESCRIBE ANY MATERIAL DISCREPANCY BETWEEN THE LOCATION OF THE CORNER AS RESTORED OR REESTABLISHED AND THE LOCATION OF THAT CORNER AS PREVIOUSLY RESTORED OR REESTABLISHED BY DISTANCE AND DIRECTION. SHOW THE DISCREPANCY ON THE PLAN VIEW DRAWING UNDER (D), ABOVE. SHOW THE DISTANCES BETWEEN THE CORNER AS PREVIOUSLY RESTORED OR REESTABLISHED AND (1) THE CORNER AS RESTORED OR REESTABLISHED, AND (2) TO AT LEAST 2 OF THE WITNESS MONUMENTS SHOWN ON THE DRAWING IN (D) ABOVE.

**LARRY AUSTIN PREVIOUSLY REMONUMENTED THIS CORNER WITH A 1" x 30" REBAR WITH A GRANT COUNTY ALUMINUM CAP AT A PROPORTIONATE LOCATION. I LEFT THAT MONUMENT IN PLACE BUT REMOVED THE ALUMINUM CAP.**

- (F) WAS THE CORNER RESTORED THROUGH ACCEPTANCE OF (1) AN OBLITERATED EVIDENCE LOCATION, OR (2) A FOUND PERPETUATED LOCATION?

**(1) AN OBLITERATED EVIDENCE LOCATION.**

- (G&H) WAS THE CORNER REESTABLISHED THROUGH LOST CORNER PROPORTIONATE METHODS? IF SO, SHOW THE METHOD, INCLUDING THE DIRECTIONS AND DISTANCES TO OTHER PUBLIC LAND SURVEY CORNERS USED AS EVIDENCE OR USED FOR PROPORTIONING IN DETERMINING THE CORNER LOCATION.

N/A

#### CORNER HISTORY

**THIS CORNER WAS NOT ESTABLISHED BY THE ORIGINAL GOVERNMENT SURVEY.**

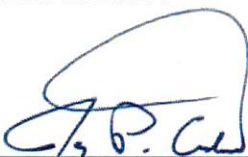
**IN A SURVEY DATED 18 JUNE 1844, WILTSE WAS AT THE CORNER.**

**IN A SURVEY DATED 23 DECEMBER 1875, JOEL BARBER WAS AT THE CORNER.**

**IN A TIE SHEET DATED 18 FEBRUARY 2008, LARRY AUSTIN SET A 1" x 30" REBAR WITH A GRANT COUNTY ALUMINUM CAP AT A PROPORTIONATE LOCATION. AUSTIN HAS USED THIS MONUMENT IN PLATS OF SURVEY DATED 19 DECEMBER 2006, 21 NOVEMBER 2007 AND 20 NOVEMBER 2008.**

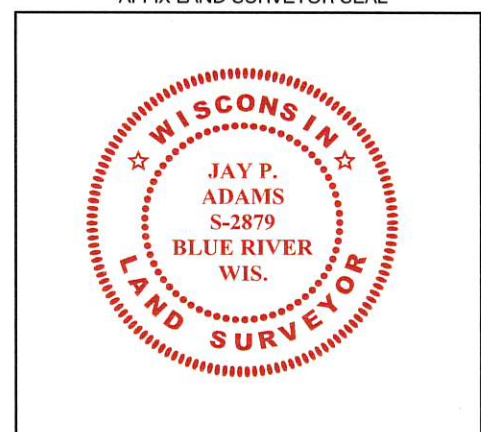
AFFIX LAND SURVEYOR SEAL

- (I) I, JAY P. ADAMS, P.L.S. - 2879, CERTIFY THAT THE CORNER LOCATION SHOWN ON THIS RECORD WAS DETERMINED BY ME OR UNDER MY DIRECTION AND CONTROL AND THAT THIS U.S. PUBLIC LAND SURVEY MONUMENT RECORD IS CORRECT AND COMPLETE TO THE BEST OF MY KNOWLEDGE AND BELIEF.

  
SIGNATURE

**29 NOVEMBER 2018**

DATE

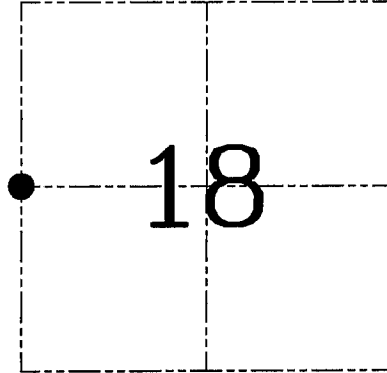


**U.S. PUBLIC LAND SURVEY MONUMENT RECORD – GRANT COUNTY, WI**  
**Section 18, Town 4 North Range 3 West, Town of South Lancaster**

CERTIFICATE

I, Larry L. Austin, do hereby certify that the corner location on this record was determined by me and/or under my direct supervision and that this U.S. public land survey monument record is correct and complete to the best of my knowledge and belief.

*Larry L. Austin*  
 Larry L. Austin, S-1903



● = CORNER LOCATION

HISTORY OF CORNER ESTABLISHMENT

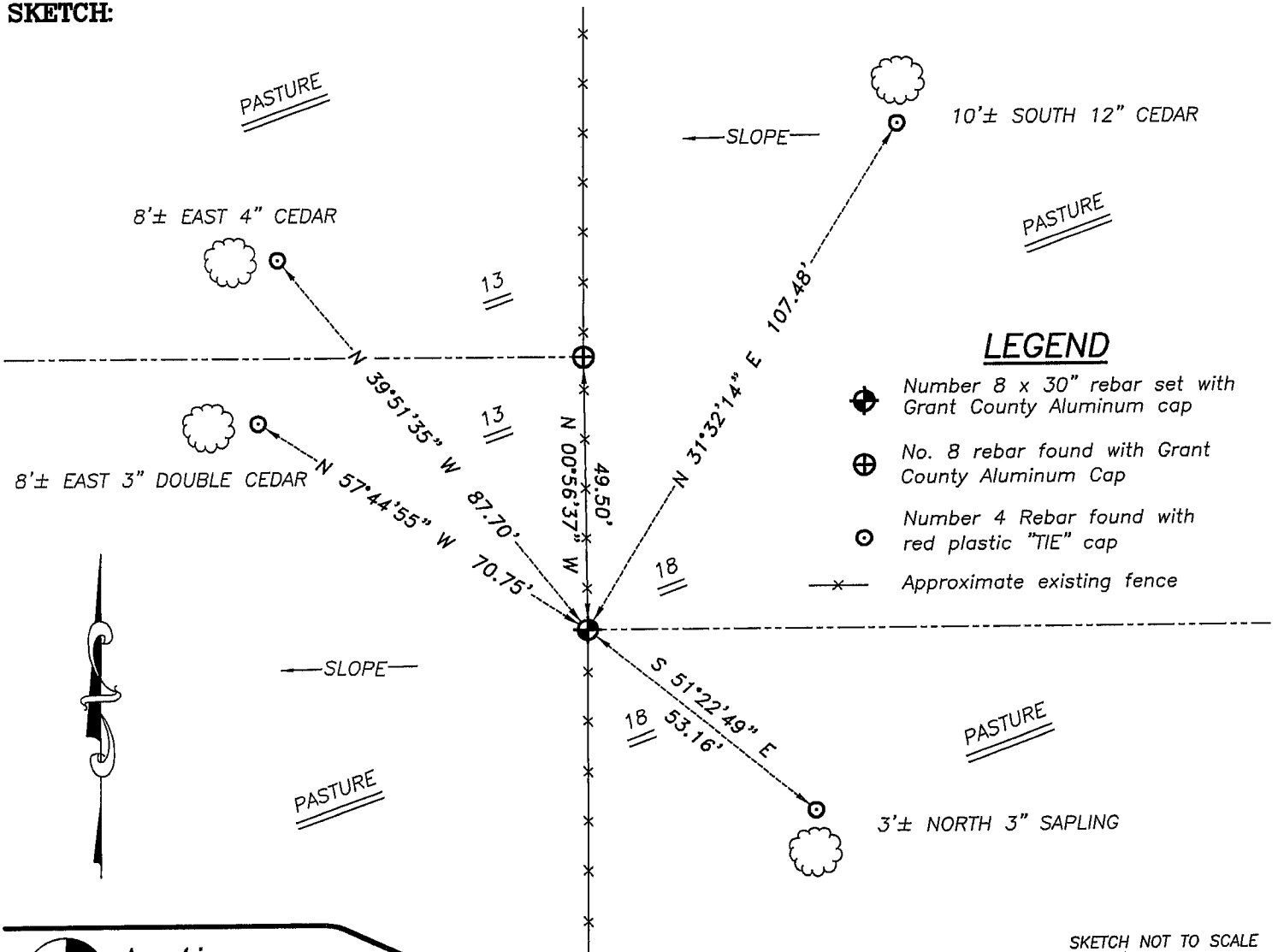
Corner was never originally set.  
 No other record of the corner was found.

DESCRIPTION OF CORNER EVIDENCE FOUND

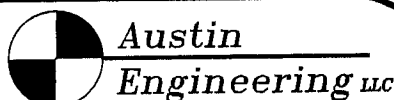
I set the corner at the proportioned offset and on-line between the East 1/4 and Southeast corner of Section 13, T4N R4W. Verified this location using EDM & GPS methods.

DESCRIPTION OF CORNER AND WITNESS MONUMENTS, references and accessories used to perpetuate the original or re-established location of this corner. Witnesses to corner location Bobby Sedgwick & Brad Digman & Shelby Blindert

**SKETCH:**



SKETCH NOT TO SCALE



4211 HWY 81 E, LANCASTER, WI 53813  
 PHONE 608-723-6363 FAX 608-723-6702

JOB NUMBER 06S075  
 FIELDBOOK: TDSR, 2608  
 G:\T4NR3W\17  
 H:\TIE\T4NR3W\54

DRAWN BY: SW AUSTIN  
 APPROVED: LL AUSTIN