

GRANT COUNTY U.S. PUBLIC LAND SURVEY MONUMENT RECORD

INSTRUCTIONS: THIS RECORD SHALL SHOW THE LOCATION OF THE CORNER AND SHALL INCLUDE ALL OF THE FOLLOWING ELEMENTS (A THROUGH I).

(A) IDENTIFY THE CORNER AS REFERENCED TO THE U.S. PUBLIC LAND SURVEY SYSTEM

■ = CORNER MONUMENT RESTORED

WITNESSES TO CORNER LOCATION:

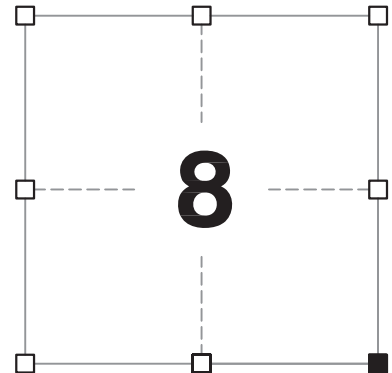
JAY P. ADAMS
TYLER D. ATKINSON

GEOGRAPHIC COORDINATES,
NAD 83 (2011) ADJUSTMENT:

LATITUDE: 42° 49' 41.12732"
LONGITUDE: 90° 44' 34.67294"

WISCONSIN COORDINATE REFERENCE SYSTEM (WISCRS),
GRANT COUNTY, NAD 83 (2011) ADJUSTMENT:

NORTHING: 516,399.85
EASTING: 810,301.22



SECTION 8
TOWNSHIP 4 NORTH, RANGE 3 WEST
TOWN OF SOUTH LANCASTER

(B) DESCRIBE ANY RECORD EVIDENCE, MONUMENT EVIDENCE, OCCUPATIONAL EVIDENCE, TESTIMONIAL EVIDENCE OR ANY OTHER MATERIAL EVIDENCE YOU CONSIDERED, AND WHETHER THE MONUMENT WAS FOUND OR PLACED.

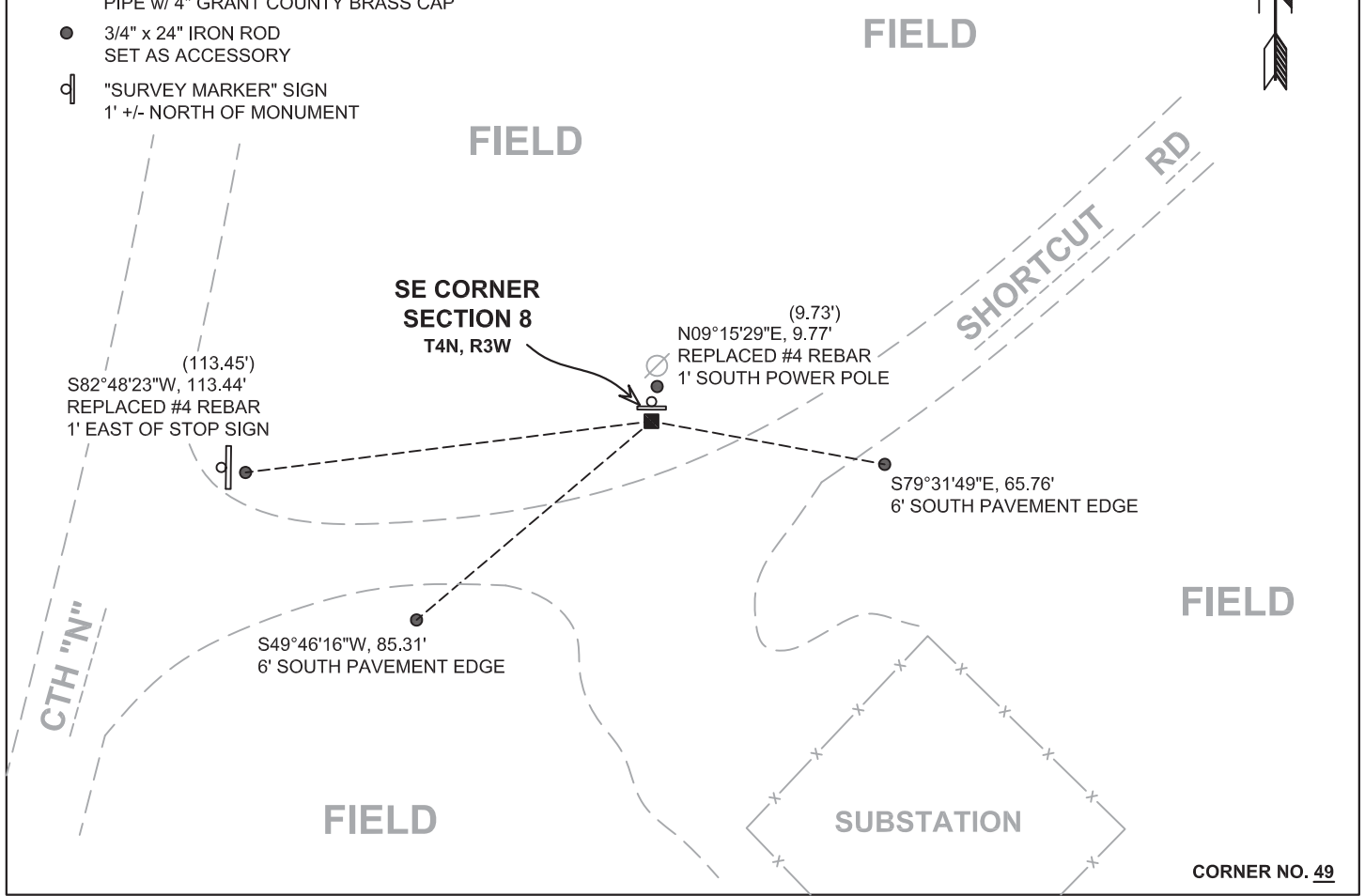
I COULD FIND NO MONUMENTS OR BEARING TREES FROM THE ORIGINAL GOVERNMENT SURVEY OR THE HISTORIC COUNTY SURVEYOR'S SUBSEQUENT RESURVEYS. I RECOVERED THE #8 x 30" REBAR AND ALUMINUM CAP REFERENCED BY AUSTIN. I ACCEPTED THIS LOCATION AS THE BEST AVAILABLE EVIDENCE OF THE CORNER AND REMONUMENTED IT WITH A 2" x 30" STAINLESS STEEL PIPE WITH A 4" GRANT COUNTY BRASS CAP.

(C) IN THE PLAN VIEW DRAWING BELOW, PROVIDE REFERENCE TIES TO AT LEAST 4 WITNESS MONUMENTS. WITNESS MONUMENTS SHALL BE MADE OF CONCRETE, NATURAL STONE, IRON, BEARING TREES OR ANY OTHER EQUALLY DURABLE MATERIAL. DEPICT THE RELEVANT MONUMENTS AND REFERENCE TIES WITH SUFFICIENT DETAIL TO ENABLE ACCURATE RELOCATION OF THE CORNER IF THE CORNER MONUMENT IS DISTURBED.

(D)

LEGEND:

- SET 2" x 30" STAINLESS STEEL PIPE w/ 4" GRANT COUNTY BRASS CAP
- 3/4" x 24" IRON ROD SET AS ACCESSORY
- ⊓ "SURVEY MARKER" SIGN 1' +/- NORTH OF MONUMENT



Remonumentation

(E) DESCRIBE ANY MATERIAL DISCREPANCY BETWEEN THE LOCATION OF THE CORNER AS RESTORED OR REESTABLISHED AND THE LOCATION OF THAT CORNER AS PREVIOUSLY RESTORED OR REESTABLISHED BY DISTANCE AND DIRECTION. SHOW THE DISCREPANCY ON THE PLAN VIEW DRAWING UNDER (D), ABOVE. SHOW THE DISTANCES BETWEEN THE CORNER AS PREVIOUSLY RESTORED OR REESTABLISHED AND (1) THE CORNER AS RESTORED OR REESTABLISHED, AND (2) TO AT LEAST 2 OF THE WITNESS MONUMENTS SHOWN ON THE DRAWING IN (D) ABOVE.

N/A

(F) WAS THE CORNER RESTORED THROUGH ACCEPTANCE OF (1) AN OBLITERATED EVIDENCE LOCATION, OR (2) A FOUND PERPETUATED LOCATION?

(2) A FOUND PERPETUATED LOCATION.

(G&H) WAS THE CORNER REESTABLISHED THROUGH LOST CORNER PROPORTIONATE METHODS? IF SO, SHOW THE METHOD, INCLUDING THE DIRECTIONS AND DISTANCES TO OTHER PUBLIC LAND SURVEY CORNERS USED AS EVIDENCE OR USED FOR PROPORTIONING IN DETERMINING THE CORNER LOCATION.

N/A

CORNER HISTORY

THE ORIGINAL GOVERNMENT CORNER WAS ESTABLISHED BY ROBERT CLARK, JR. IN THE FIRST QUARTER OF 1833.

A SURVEYS DATED 24 OCTOBER 1840 AND 16 DECEMBER 1842, FREEMAN WAS AT THE CORNER.

IN A SURVEY DATED 25 MAY 1976, DAVID KROHN NOTES THAT THE CORNER IS 2640' NORTH OF THE EAST QUARTER CORNER.

IN A PLAT OF SURVEY AND A TIE SHEET DATED 5 NOVEMBER 1986, PAUL CHAFER NOTES A 1" IRON PIPE.

IN A TIE SHEET DATED 10 OCTOBER 1998 LARRY AUSTIN FOUND CHAFER'S TIES AND DID NOT ACCEPT HIS LOCATION. AUSTIN REMONUMENTED THE CORNER BY PROJECTING AN EAST/WEST FENCE FROM THE WEST INTO AN EXISTING NORTH/SOUTH FENCE AT THE CORNER. HE SET A #8 x 30" REBAR WITH A GRANT COUNTY ALUMINUM CAP AT THIS LOCATION.

VARIOUS SURVEYORS HAVE REPORTED SETTING OR FINDING A #8 REBAR WITH GRANT COUNTY ALUMINUM CAP SINCE THAT TIME BUT NO NEW TIE SHEET OF RECORD EXISTS.

(I) I, JAY P. ADAMS, P.L.S. - 2879, CERTIFY THAT THE CORNER LOCATION SHOWN ON THIS RECORD WAS DETERMINED BY ME OR UNDER MY DIRECTION AND CONTROL AND THAT THIS U.S. PUBLIC LAND SURVEY MONUMENT RECORD IS CORRECT AND COMPLETE TO THE BEST OF MY KNOWLEDGE AND BELIEF.

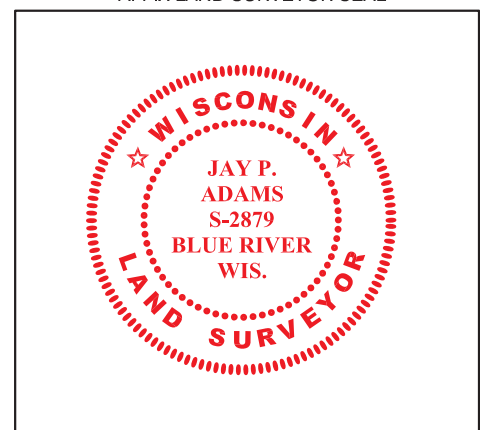


8 JANUARY 2019

SIGNATURE

DATE

AFFIX LAND SURVEYOR SEAL



GRANT COUNTY CERTIFIED LAND CORNER

CORNER NO. 49

CERTIFICATE:

I, LARRY L. AUSTIN, DO HEREBY CERTIFY THAT ON 11 DAY OF NOVEMBER, 1998, I FOUND EVIDENCE OF THE NORTHEAST CORNER OF SECTION 17, TOWN 4 NORTH, RANGE 3 WEST, OF THE FOURTH PRINCIPAL MERIDIAN, AND I RE-ESTABLISHED SAID CORNER ACCORDING TO THE WISCONSIN STATUTES AS SHOWN AND DESCRIBED HEREON.

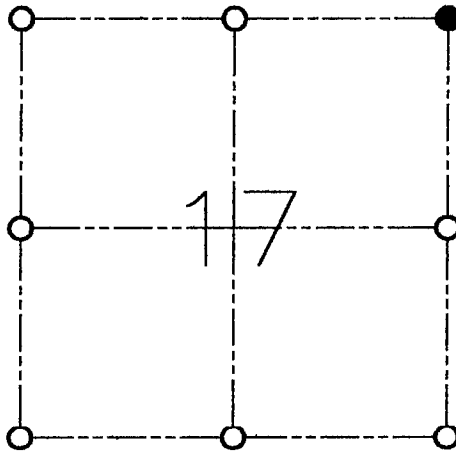
DATED THIS 10 DAY OF OCT 1998

Larry L. Austin
LARRY L. AUSTIN S-1903



SEAL

T 4 N R 3 W
TOWN OF SOUTH LANCASTER



● = CORNER LOCATION

NORTHEAST CORNER OF SECTION 17

HISTORY OF ORIGINAL CORNER ESTABLISHMENT:

CORNER SET IN 1833 BY ROBERT CLARK.
CORNER RESET IN 1986 BY PAUL CHAFER.

DESCRIPTION OF CORNER EVIDENCE FOUND:

I FOUND THE TIES SET BY CHAFER AND RESET HIS LOCATION. I FOUND THIS LOCATION TO BE INCORRECT. I FOUND AN EXISTING NORTH/SOUTH FENCE AND PROJECTED A FENCE FROM THE WEST. THIS LOCATION FIT WELL WITH THE REST OF THE SECTION. VERIFIED LOCATION USING E.D.M. AND G.P.S. METHODS.

DESCRIPTION OF CORNER AND WITNESS MONUMENTS, REFERENCES AND ACCESSORIES USED TO PERPETUATE THE ORIGINAL OR RE-ESTABLISHED LOCATION OF THIS CORNER:

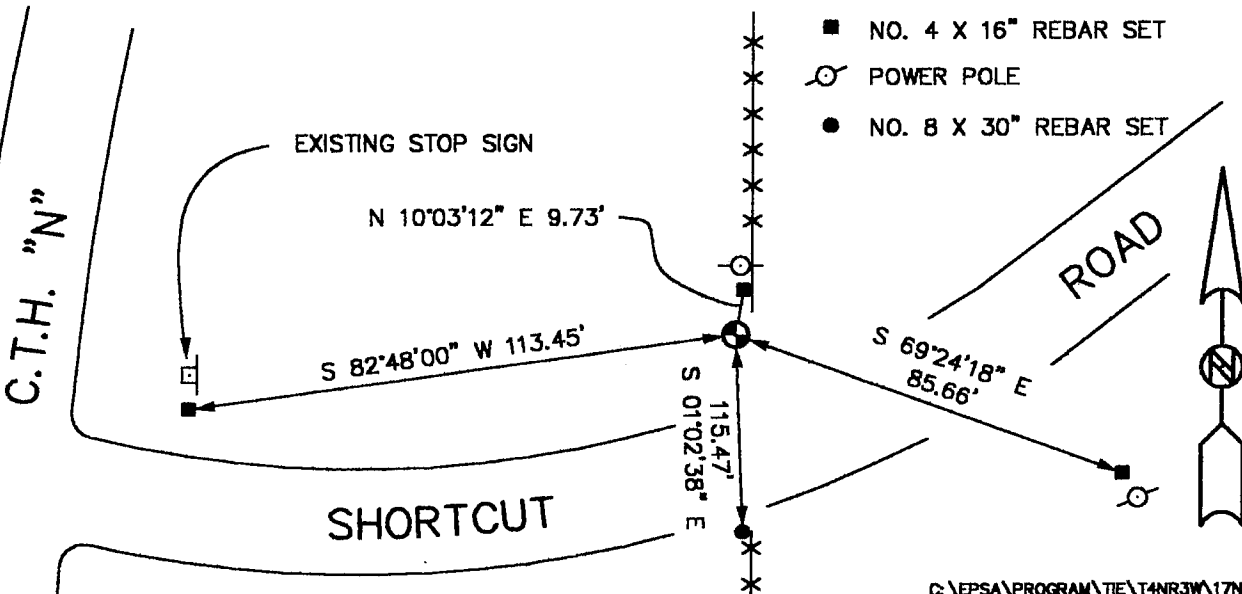
WITNESS TO THE CORNER LOCATION:

BOBBY SEDGWICK
SHELBY BLINDERT

SKETCH:

LEGEND

- ⊕ NO. 8 X 30" REBAR SET WITH GRANT COUNTY ALUMINUM CAP
- NO. 4 X 16" REBAR SET
- ⊙ POWER POLE
- NO. 8 X 30" REBAR SET



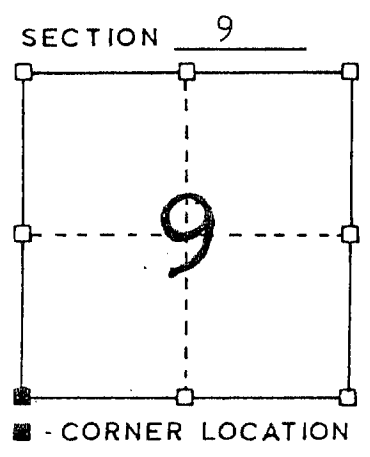
C:\EPSA\PROGRAM\TIE\T4NR3W\17NE

RECORD OF CORNER MONUMENTATION TIE SHEET

SOUTHWEST CORNER, SECTION 9, T. 4 N., R. 3 W.
GRANT COUNTY, WISCONSIN

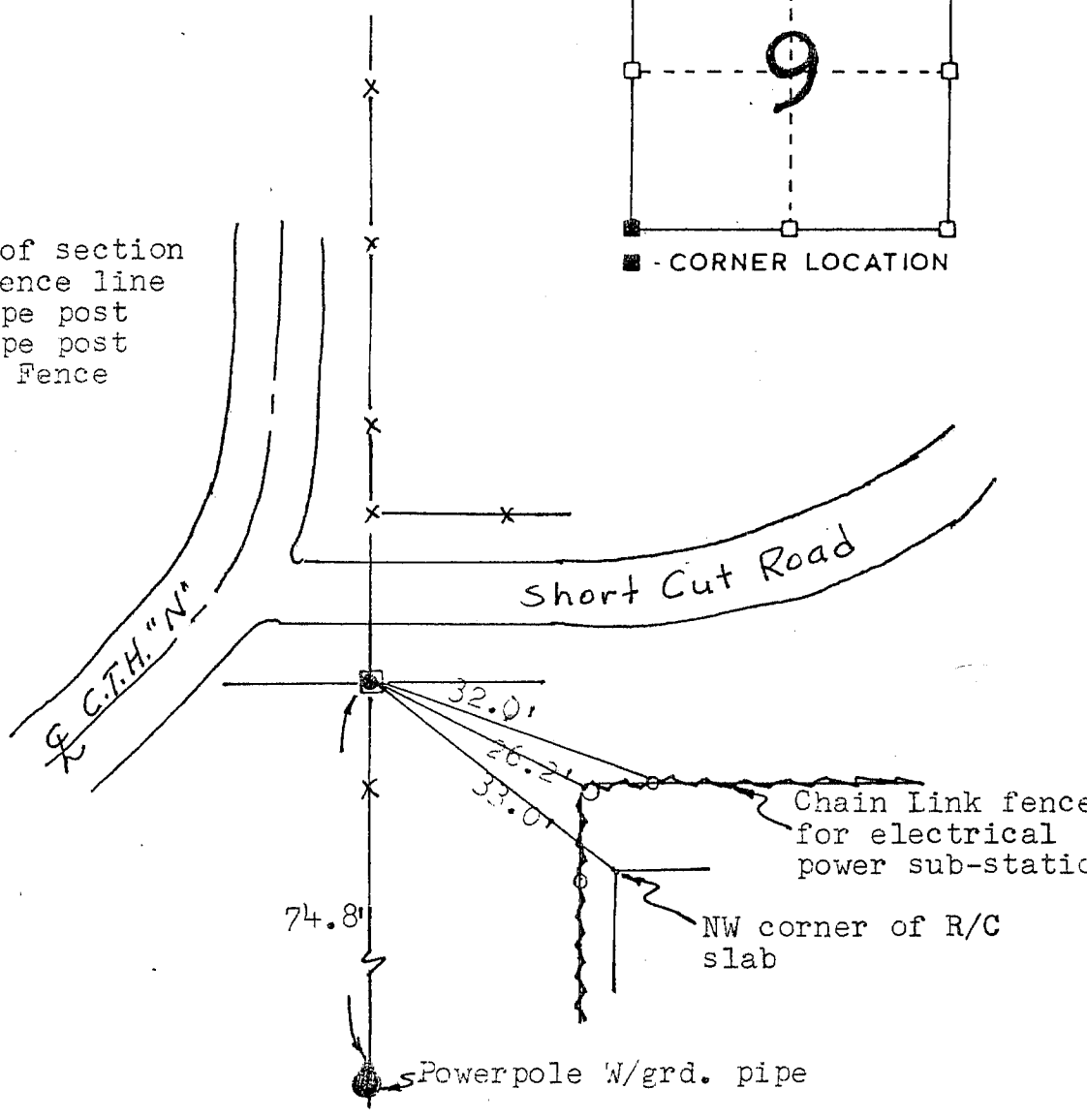


SKETCH OF CORNER
REFERENCE TIES



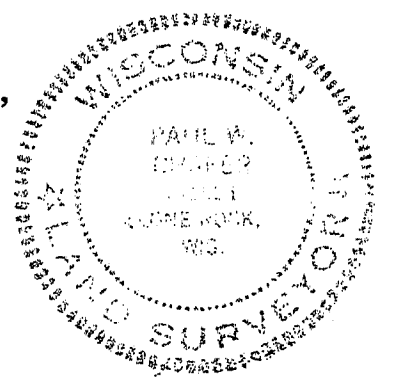
TYPE OF MONUMENT:

- SW corner of section
- x— Existing fence line
- 3" iron pipe post
- 4" iron pipe post
- ~~~~~ Chain link Fence



SURVEYOR'S CERTIFICATE
STATE OF WISCONSIN)
GRANT COUNTY)

I HEREBY CERTIFY THAT while doing a survey in Sec. 9, T. 4 N., R.3 W., Grant County, Wisconsin, I did locate a 1" iron pipe at the southwest corner of said section, and a traverse of the SW Quarter with T-2 and EDM verified that this was the corner to the best of my knowledge and belief.



DATED THIS 5 DAY OF
November 1986

Paul W. Chapin
REGISTERED LAND SURVEYOR
S- 1521

240