

GRANT COUNTY U.S. PUBLIC LAND SURVEY MONUMENT RECORD

INSTRUCTIONS: THIS RECORD SHALL SHOW THE LOCATION OF THE CORNER AND SHALL INCLUDE ALL OF THE FOLLOWING ELEMENTS (A THROUGH I).

(A) IDENTIFY THE CORNER AS REFERENCED TO THE U.S. PUBLIC LAND SURVEY SYSTEM

■ = CORNER MONUMENT RESTORED

WITNESSES TO CORNER LOCATION:

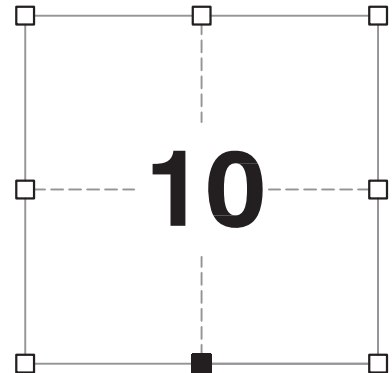
JAY P. ADAMS
PAIGE O. JELINEK

GEOGRAPHIC COORDINATES,
NAD 83 (2011) ADJUSTMENT:

LATITUDE: 42° 49' 40.85823"
LONGITUDE: 90° 42' 49.87007"

WISCONSIN COORDINATE REFERENCE SYSTEM (WISCRS),
GRANT COUNTY, NAD 83 (2011) ADJUSTMENT:

NORTHING: 516,379.24
EASTING: 818,111.28



SECTION 10
TOWNSHIP 4 NORTH, RANGE 3 WEST
TOWN OF SOUTH LANCASTER

(B) DESCRIBE ANY RECORD EVIDENCE, MONUMENT EVIDENCE, OCCUPATIONAL EVIDENCE, TESTIMONIAL EVIDENCE OR ANY OTHER MATERIAL EVIDENCE YOU CONSIDERED, AND WHETHER THE MONUMENT WAS FOUND OR PLACED.

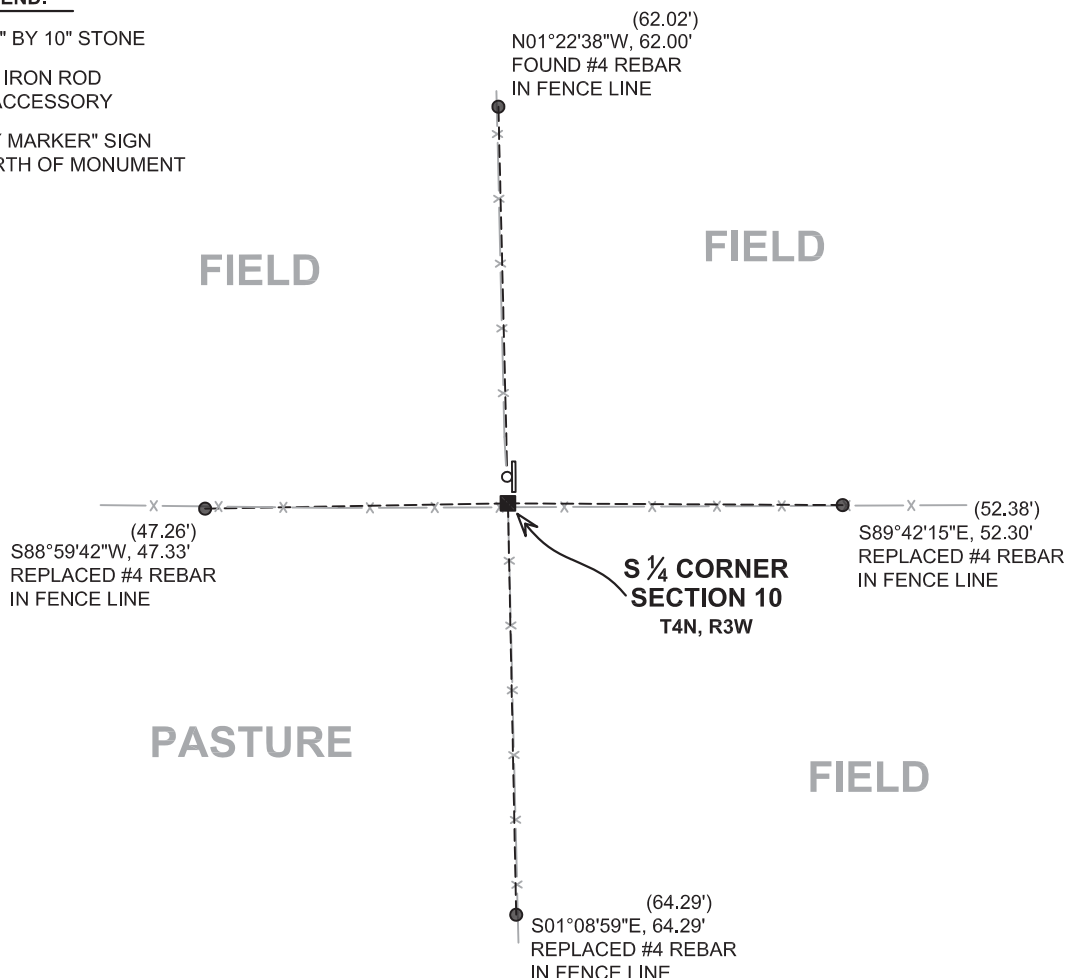
I COULD FIND NO MONUMENTS OR BEARING TREES FROM THE ORIGINAL GOVERNMENT SURVEY. I RECOVERED THE STONE (2" x 10") REFERENCED BY AUSTIN. I ACCEPTED THIS LOCATION AS THE BEST AVAILABLE EVIDENCE OF THE CORNER AND LEFT THE STONE IN PLACE.

(C) IN THE PLAN VIEW DRAWING BELOW, PROVIDE REFERENCE TIES TO AT LEAST 4 WITNESS MONUMENTS. WITNESS MONUMENTS SHALL BE MADE OF CONCRETE, NATURAL STONE, IRON, BEARING TREES OR ANY OTHER EQUALLY DURABLE MATERIAL. DEPICT THE RELEVANT MONUMENTS AND REFERENCE TIES WITH SUFFICIENT DETAIL TO ENABLE ACCURATE RELOCATION OF THE CORNER IF THE CORNER MONUMENT IS DISTURBED.

(D)

LEGEND:

- FOUND 2" BY 10" STONE
- 3/4" x 24" IRON ROD SET AS ACCESSORY
- "SURVEY MARKER" SIGN 1' +/- NORTH OF MONUMENT



Remonumentation

(E) DESCRIBE ANY MATERIAL DISCREPANCY BETWEEN THE LOCATION OF THE CORNER AS RESTORED OR REESTABLISHED AND THE LOCATION OF THAT CORNER AS PREVIOUSLY RESTORED OR REESTABLISHED BY DISTANCE AND DIRECTION. SHOW THE DISCREPANCY ON THE PLAN VIEW DRAWING UNDER (D), ABOVE. SHOW THE DISTANCES BETWEEN THE CORNER AS PREVIOUSLY RESTORED OR REESTABLISHED AND (1) THE CORNER AS RESTORED OR REESTABLISHED, AND (2) TO AT LEAST 2 OF THE WITNESS MONUMENTS SHOWN ON THE DRAWING IN (D) ABOVE.

N/A

(F) WAS THE CORNER RESTORED THROUGH ACCEPTANCE OF (1) AN OBLITERATED EVIDENCE LOCATION, OR (2) A FOUND PERPETUATED LOCATION?

(2) A FOUND PERPETUATED LOCATION.

(G&H) WAS THE CORNER REESTABLISHED THROUGH LOST CORNER PROPORTIONATE METHODS? IF SO, SHOW THE METHOD, INCLUDING THE DIRECTIONS AND DISTANCES TO OTHER PUBLIC LAND SURVEY CORNERS USED AS EVIDENCE OR USED FOR PROPORTIONING IN DETERMINING THE CORNER LOCATION.

N/A

CORNER HISTORY

THE ORIGINAL GOVERNMENT CORNER WAS ESTABLISHED BY ROBERT CLARK, JR. IN THE FIRST QUARTER OF 1833.

IN A TIE SHEET DATED 27 JANUARY 1997, LARRY AUSTIN FOUND A 2" x 6" STONE AT A 4-WAY FENCE CORNER.

THIS STONE HAS BEEN USED IN MANY AREA SURVEYS AND MOST RECENTLY REESTABLISHED IN A TIE SHEET BY LARRY AUSTIN DATED 6 APRIL 2000.

(I) I, JAY P. ADAMS, P.L.S. - 2879, CERTIFY THAT THE CORNER LOCATION SHOWN ON THIS RECORD WAS DETERMINED BY ME OR UNDER MY DIRECTION AND CONTROL AND THAT THIS U.S. PUBLIC LAND SURVEY MONUMENT RECORD IS CORRECT AND COMPLETE TO THE BEST OF MY KNOWLEDGE AND BELIEF.

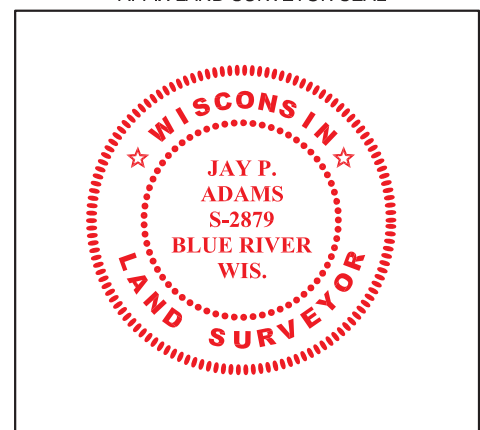


8 JANUARY 2019

SIGNATURE

DATE

AFFIX LAND SURVEYOR SEAL



GRANT COUNTY CERTIFIED LAND CORNER

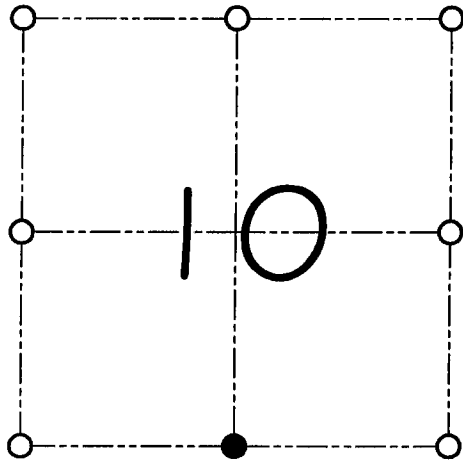
CORNER NUMBER 46

CERTIFICATE:

I, Larry L. Austin, do hereby certify that on the 6th day of April, 2000, I found evidence of the South 1/4 corner of Section 10, Town 4 North, Range 3 West, of the 4th Principal Meridian, and I re-established said corner according to the Wisconsin statutes as shown and described hereon.

Dated this 12th day of May, 2000

Larry L. Austin
Larry L. Austin S-1903



● = CORNER LOCATION

SOUTH 1/4 CORNER OF
SECTION 10, T 4 N R 3 W
TOWN OF SOUTH LANCASTER

HISTORY OF ORIGINAL CORNER ESTABLISHMENT:

Corner was originally set in 1833 by Robert Clark.
No other record of the corner was found.

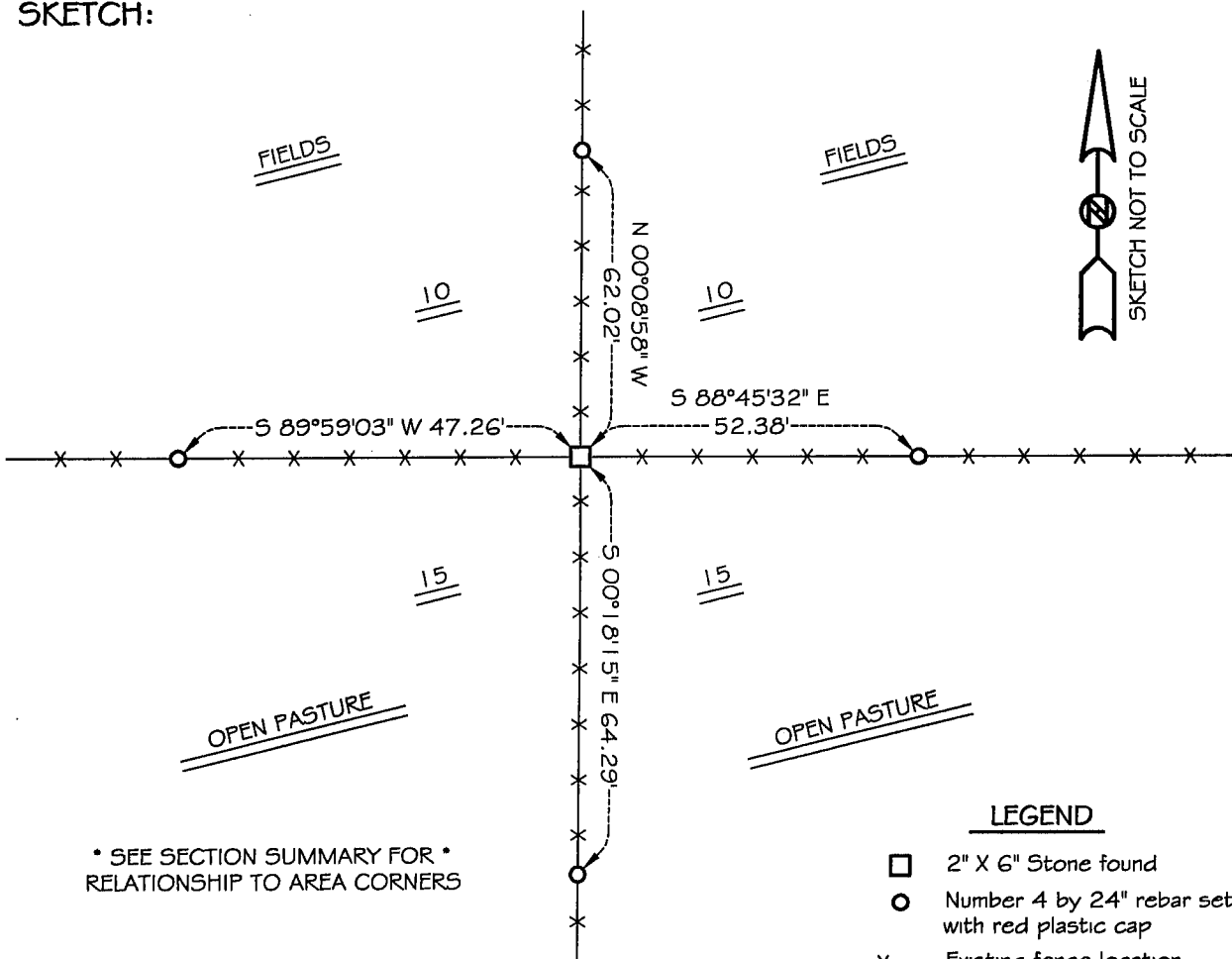
DESCRIPTION OF CORNER EVIDENCE FOUND:

I found an existing Stone at a fence corner and accepted it's location after an E.D.M. & G.P.S. traverse of the area.

DESCRIPTION OF CORNER AND WITNESS MONUMENTS, references and accessories used to perpetuate the original or re-established location of this corner

WITNESS TO THE CORNER LOCATION: SHANE AUSTIN & SHELBY BLINDERT

SKETCH:



* SEE SECTION SUMMARY FOR *
RELATIONSHIP TO AREA CORNERS

LEGEND

- 2" X 6" Stone found
- Number 4 by 24" rebar set with red plastic cap
- x- Existing fence location

GRANT COUNTY

Survey Monument Record

TYPE OF MONUMENT FOUND STONE

STATE PLANE COORDINATES: N _____
E _____

ELEVATION — M.S.L. DATUM: _____

THETA ANGLE: _____

FIELD BOOK: 96-18

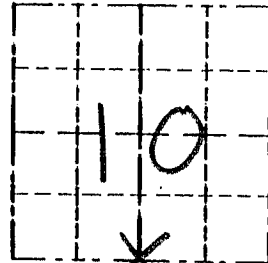
PAGE 18

CORNER NO. 46

SECTION 10

TOWN 4N

RANGE 3W

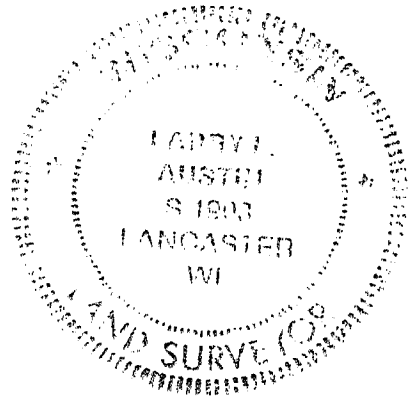


LOCATION
(Indicated by "X")

BASIS FOR MONUMENT LOCATION

(Use reverse side if necessary)

CORNER SET IN 1833 BY ROBERT CLARK. NO RECORD SEAL: OF CORNER FOUND SINCE ORIGINAL SURVEYS. I FOUND A 2" X 6" STONE AT AN OCCUPIED FENCE CORNER. VERIFIED ITS LOCATION USING EDM METHODS.



CERTIFIED CORRECT

Larry J. Austin
Registered Land Surveyor

DATE: 1-27-97

TIE SKETCH

Show at least three (3) ties and monument

LEGEND

- 2" X 6" STONE FOUND
- 1/2" X 15" IRON BAR SET

—X—X— EXISTING FENCE

