

GRANT COUNTY U.S. PUBLIC LAND SURVEY MONUMENT RECORD

INSTRUCTIONS: THIS RECORD SHALL SHOW THE LOCATION OF THE CORNER AND SHALL INCLUDE ALL OF THE FOLLOWING ELEMENTS (A THROUGH I).

(A) IDENTIFY THE CORNER AS REFERENCED TO THE U.S. PUBLIC LAND SURVEY SYSTEM

■ = CORNER MONUMENT RESTORED

WITNESSES TO CORNER LOCATION:

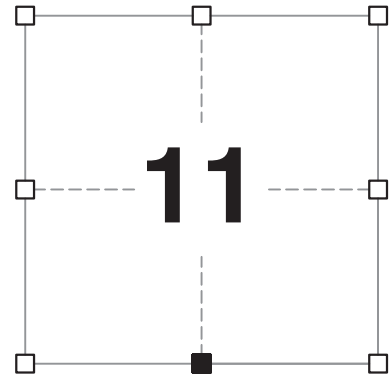
JAY P. ADAMS
PAIGE O. JELINEK

GEOGRAPHIC COORDINATES,
NAD 83 (2011) ADJUSTMENT:

LATITUDE: 42° 49' 40.77461"
LONGITUDE: 90° 41' 38.24021"

WISCONSIN COORDINATE REFERENCE SYSTEM (WISCRS),
GRANT COUNTY, NAD 83 (2011) ADJUSTMENT:

NORTHING: 516,376.86
EASTING: 823,449.24



SECTION 11
TOWNSHIP 4 NORTH, RANGE 3 WEST
TOWN OF SOUTH LANCASTER

(B) DESCRIBE ANY RECORD EVIDENCE, MONUMENT EVIDENCE, OCCUPATIONAL EVIDENCE, TESTIMONIAL EVIDENCE OR ANY OTHER MATERIAL EVIDENCE YOU CONSIDERED, AND WHETHER THE MONUMENT WAS FOUND OR PLACED.

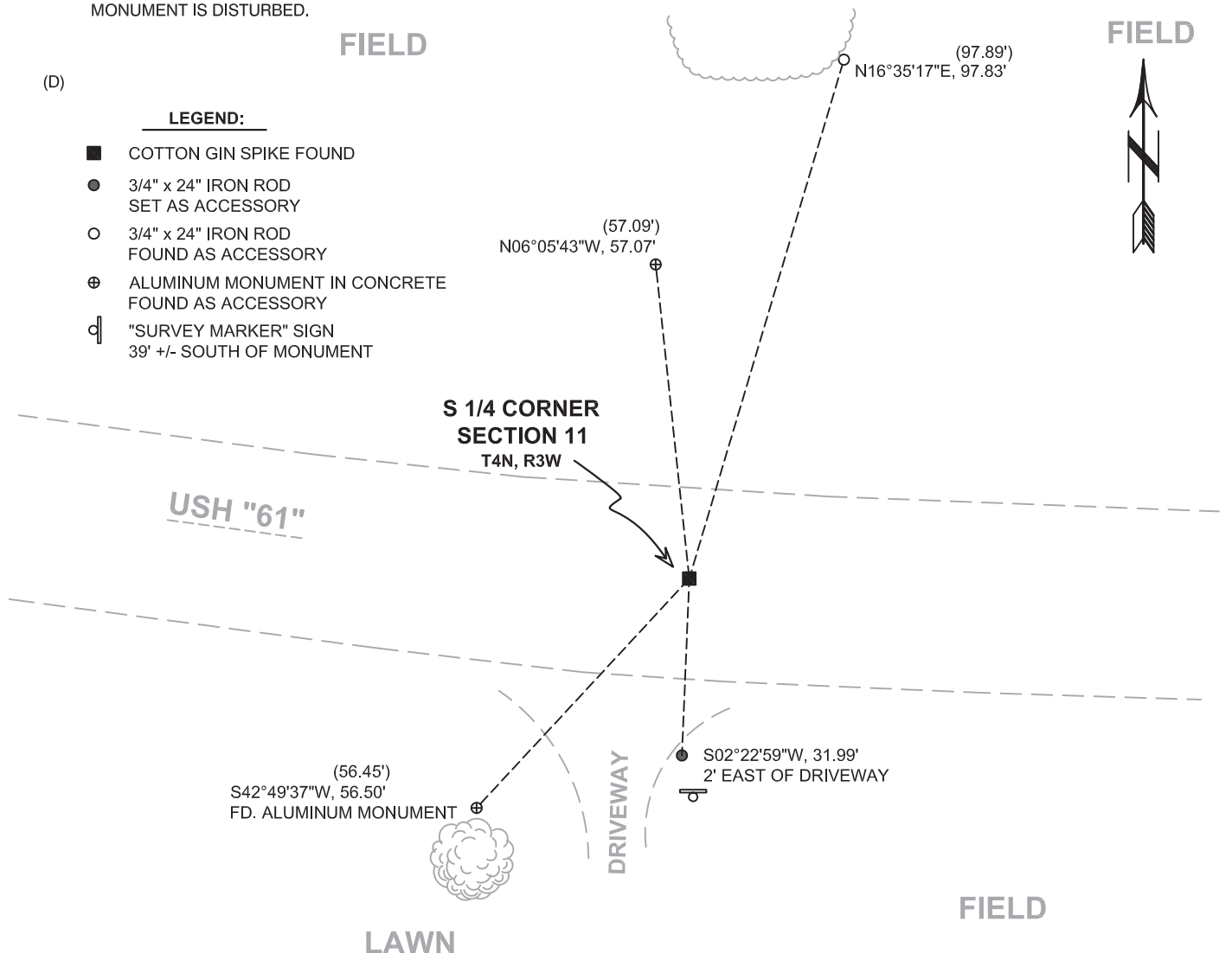
I COULD FIND NO MONUMENTS OR BEARING TREES FROM THE ORIGINAL GOVERNMENT SURVEY OR THE HISTORIC COUNTY SURVEYOR'S SUBSEQUENT RESURVEY. I RECOVERED THE COTTON GIN SPIKE AS REPORTED BY KREBS AND ACCEPTED IT'S LOCATION AS THE BEST AVAILABLE EVIDENCE OF THE CORNER AND LEFT IT IN PLACE.

(C) IN THE PLAN VIEW DRAWING BELOW, PROVIDE REFERENCE TIES TO AT LEAST 4 WITNESS MONUMENTS. WITNESS MONUMENTS SHALL BE MADE OF CONCRETE, NATURAL STONE, IRON, BEARING TREES OR ANY OTHER EQUALLY DURABLE MATERIAL. DEPICT THE RELEVANT MONUMENTS AND REFERENCE TIES WITH SUFFICIENT DETAIL TO ENABLE ACCURATE RELOCATION OF THE CORNER IF THE CORNER MONUMENT IS DISTURBED.

(D)

LEGEND:

- COTTON GIN SPIKE FOUND
- 3/4" x 24" IRON ROD SET AS ACCESSORY
- 3/4" x 24" IRON ROD FOUND AS ACCESSORY
- ⊕ ALUMINUM MONUMENT IN CONCRETE FOUND AS ACCESSORY
- Ⓜ "SURVEY MARKER" SIGN 39' +/- SOUTH OF MONUMENT



Remonumentation

(E) DESCRIBE ANY MATERIAL DISCREPANCY BETWEEN THE LOCATION OF THE CORNER AS RESTORED OR REESTABLISHED AND THE LOCATION OF THAT CORNER AS PREVIOUSLY RESTORED OR REESTABLISHED BY DISTANCE AND DIRECTION. SHOW THE DISCREPANCY ON THE PLAN VIEW DRAWING UNDER (D), ABOVE. SHOW THE DISTANCES BETWEEN THE CORNER AS PREVIOUSLY RESTORED OR REESTABLISHED AND (1) THE CORNER AS RESTORED OR REESTABLISHED, AND (2) TO AT LEAST 2 OF THE WITNESS MONUMENTS SHOWN ON THE DRAWING IN (D) ABOVE.

N/A

(F) WAS THE CORNER RESTORED THROUGH ACCEPTANCE OF (1) AN OBLITERATED EVIDENCE LOCATION, OR (2) A FOUND PERPETUATED LOCATION?

(2) A FOUND PERPETUATED LOCATION.

(G&H) WAS THE CORNER REESTABLISHED THROUGH LOST CORNER PROPORTIONATE METHODS? IF SO, SHOW THE METHOD, INCLUDING THE DIRECTIONS AND DISTANCES TO OTHER PUBLIC LAND SURVEY CORNERS USED AS EVIDENCE OR USED FOR PROPORTIONING IN DETERMINING THE CORNER LOCATION.

N/A

CORNER HISTORY

THE ORIGINAL GOVERNMENT CORNER WAS ESTABLISHED BY ROBERT CLARK JR. IN THE FIRST QUARTER OF 1833.

IN A SURVEY DATED 17 JANUARY 1846, GEORGE STUNTZ REESTABLISHED THE CORNER AT A SINGLE PROPORTIONATE LOCATION.

IN A SURVEY DATED 7 SEPTEMBER 1849, GEORGE STUNTZ WAS AGAIN AT THE CORNER.

IN A SURVEY DATED 9 SEPTEMBER 1878, JOEL BARBER REPORTS AN "ANCIENT CORNER STONE."

IN A PLAT OF SURVEY DATED 16 DECEMBER 1981, JOHN HALVERSON FOUND A PK NAIL.

IN A TIE SHEET DATED 9 MARCH 1988, TIMOTHY MOORE SET A 3/4" REBAR WITH A GRANT COUNTY ALUMINUM CAP JUST BELOW THE ROADWAY SURFACE FROM REFERENCES TO HALVERSON'S SURVEY.

IN A TIE SHEET DATED 23 APRIL 2012, JOHN KREBS SET A COTTON GIN SPIKE IN PLACE OF THE REBAR AND ALUMINUM CAP SET BY MOORE FOLLOWING ROAD CONSTRUCTION.

THIS LOCATION HAS BEEN USED IN NUMEROUS AREA SURVEYS.

(I) I, JAY P. ADAMS, P.L.S. - 2879, CERTIFY THAT THE CORNER LOCATION SHOWN ON THIS RECORD WAS DETERMINED BY ME OR UNDER MY DIRECTION AND CONTROL AND THAT THIS U.S. PUBLIC LAND SURVEY MONUMENT RECORD IS CORRECT AND COMPLETE TO THE BEST OF MY KNOWLEDGE AND BELIEF.

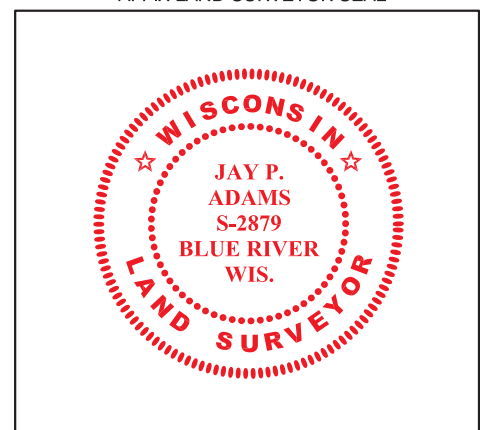


SIGNATURE

2 JANUARY 2019

DATE

AFFIX LAND SURVEYOR SEAL



U.S. PUBLIC LAND SURVEY MONUMENT RECORD - GRANT COUNTY, WI

Section 11, Town 4 North, Range 3 West, Town of South Lancaster

(a)

NOTE: This form is intended and designed to fulfill all requirements of Wisconsin Administrative Code. Chapter A-E 7.08, U.S. Public Land Survey Monument Record (3) (a) (b) (c) (d) (e) (f) (g) (h) (i). "An additional sheet may be added if necessary to conform with said requirements."

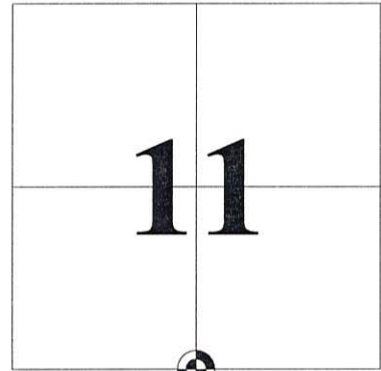
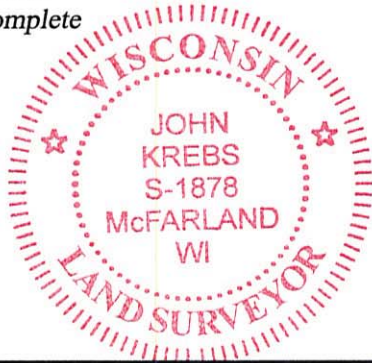
CERTIFICATE:

(i)

I, John Krebs, do hereby certify that the corner location on this record was determined by me and/or under my direct supervision and that this U.S. Public Land Survey Monument Record is correct and complete to the best of my knowledge and belief.

Dated this 4th day of April, 2012.

John Krebs 4-23-12
 John Krebs, S-1878



CORNER LOCATION

HISTORY OF CORNER ESTABLISHMENT:

Timothy J. Moore set a rebar with Aluminum cap on March 9, 1988.
 Michael S. O'Keefe, S-2743, located corner on July 6, 2011, before road construction began.

DESCRIPTION OF CORNER EVIDENCE FOUND:

(b) (f) (g) (h)

Corner was removed during road construction. Replaced corner per location by Michael S. O'Keefe. Found 2 ties as shown on a tie sheet by Timothy J. Moore, S-1830, dated March 9, 1988. Set cotton pin at Section corner, and found an two additional ties and set a tie as shown hereon.

Witnesses to corner location _____

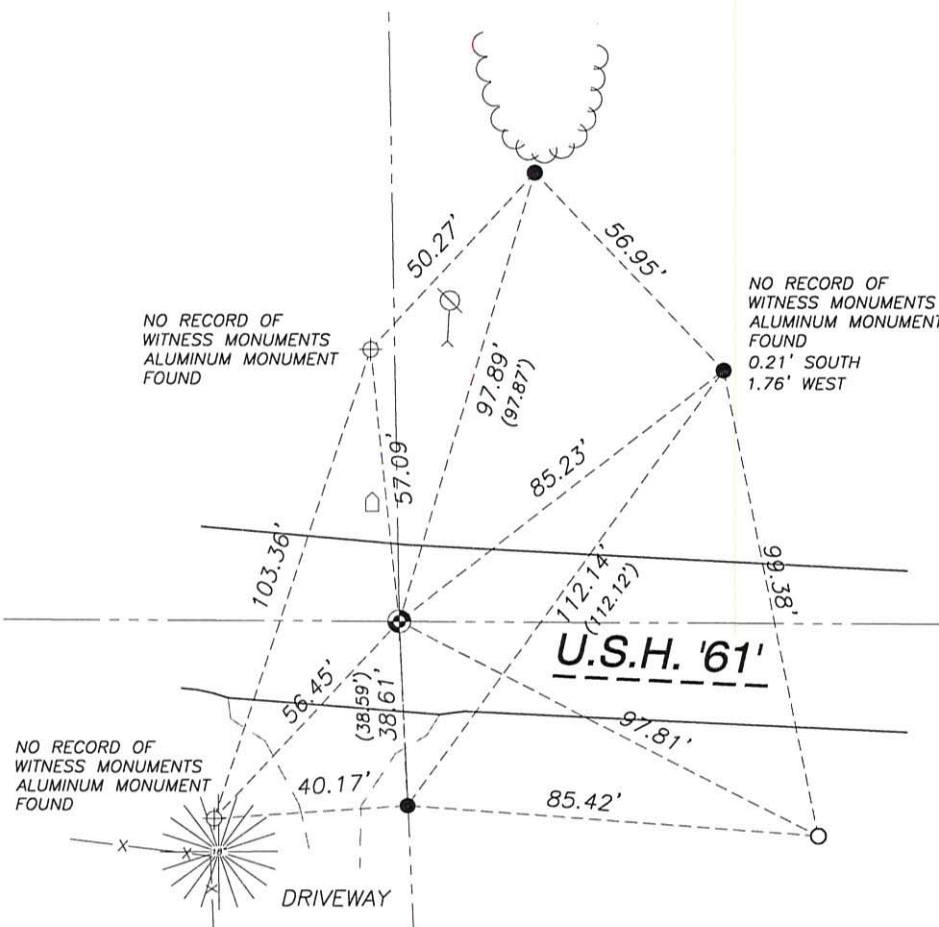
DESCRIPTION OF CORNER AND WITNESS MONUMENTS: references and accessories used to perpetuate the original or re-established location of this corner.

(c) (d) (e)

SKETCH:

LEGEND

- GOVERNMENT CORNER
- WITNESS MONUMENT FOUND
- 3/4" REBAR FOUND
- 3/4" x 24" REBAR SET (1.50 LBS/LF)
- MAIL BOX
- POWER POLE W/GUY
- CONIFEROUS TREE
- SECTION LINE
- EDGE OF PAVEMENT
- EDGE OF GRAVEL
- FENCE LINE



SCALE: 1" = 40'

SHEET 1 OF 1

44

JSD Professional Services, Inc.
 • Engineers • Surveyors • Planners

161 HORIZON DRIVE, SUITE 101
 VERONA, WISCONSIN 53593
 PHONE: (608)-848-5060

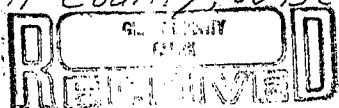
J:\2011\114660\dwg\11-4660 WisDOT Dickeyville.dwg

U. S. PUBLIC LAND SURVEY MONUMENT RECORD

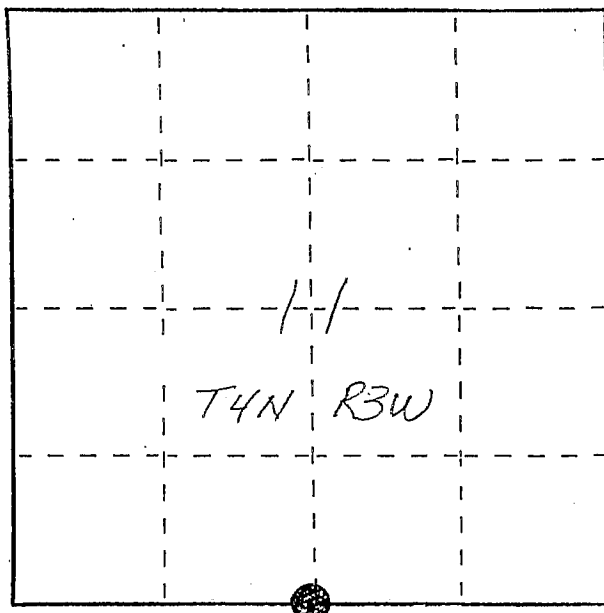
INSTRUCTIONS: This record shall show the location of the corner and shall include all of the following nine elements (a through i).

- (a) Identify the corner by reference to the U.S. public land survey system.
- = Corner monument restored.

5/4 corner section 11
 T4N R3W of the
 4th P.M.
 Town of South Lancaster
 Grant County, Wisconsin.



APR 27 1981

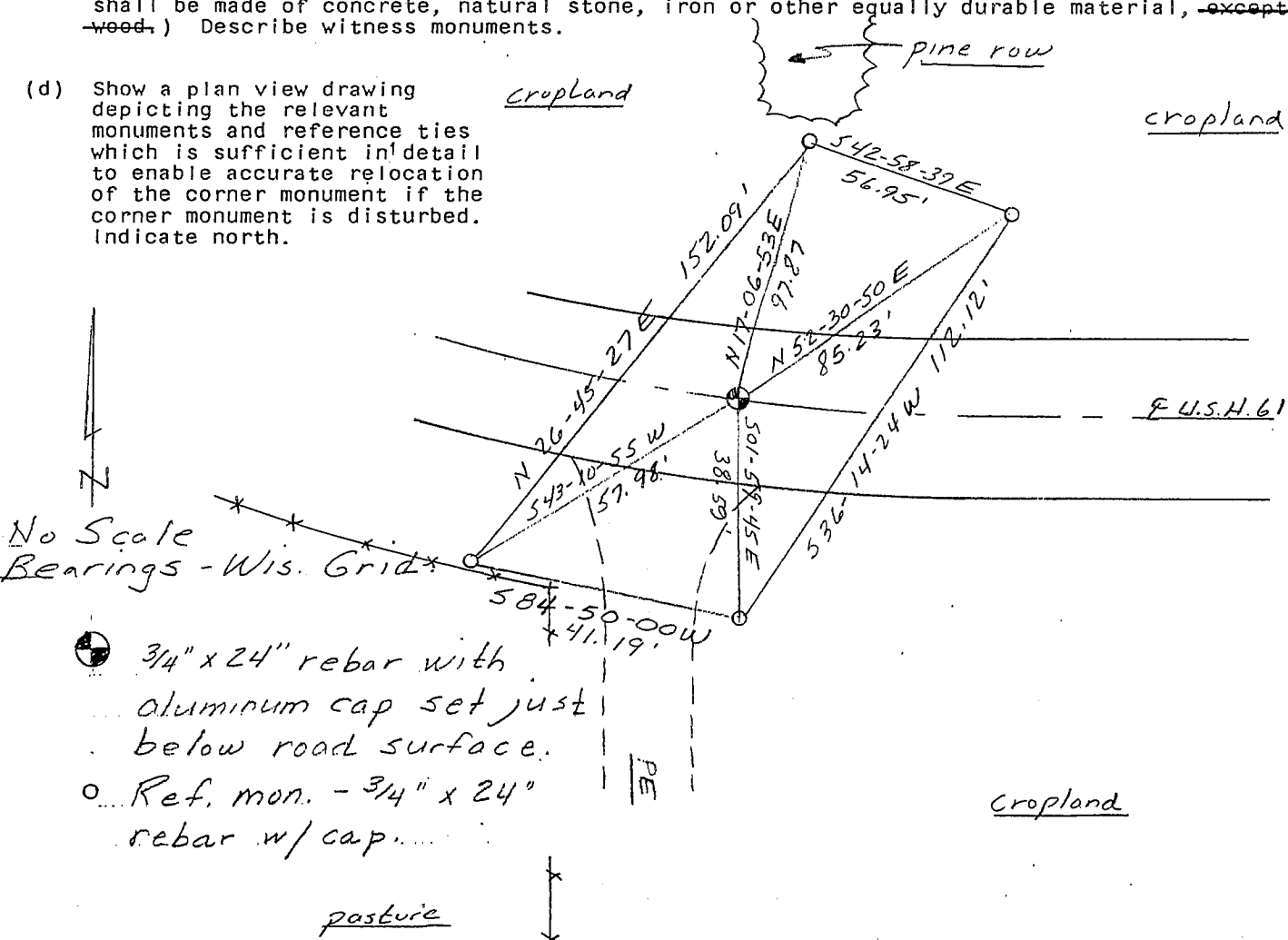


- (b) Describe any record evidence, monument evidence, occupational evidence, testimonial evidence or any other material evidence you considered, and whether the monument was found or placed.

Monument reestablished as shown on a 1981 survey by John M. Halverson. Corner location agrees with other corners reestablished in area, occupation evidence, and the 1950 U.S.H. 61 R/W plat. Due to planned construction a Berntsen monument was not set.

- (c) In the plan view drawing below, provide reference ties to at least 4 witness monuments, or, if the location is within a municipality, to at least 2 witness monuments. (Witness monuments shall be made of concrete, natural stone, iron or other equally durable material, ~~except wood.~~) Describe witness monuments.

- (d) Show a plan view drawing depicting the relevant monuments and reference ties which is sufficient in detail to enable accurate relocation of the corner monument if the corner monument is disturbed. Indicate north.

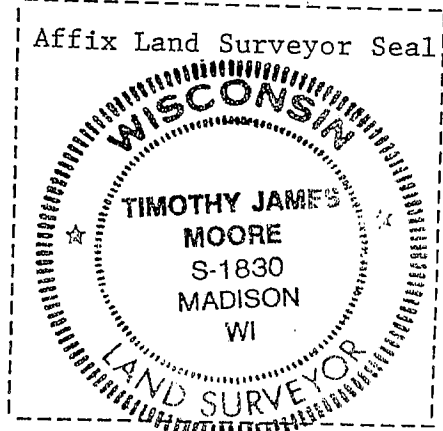
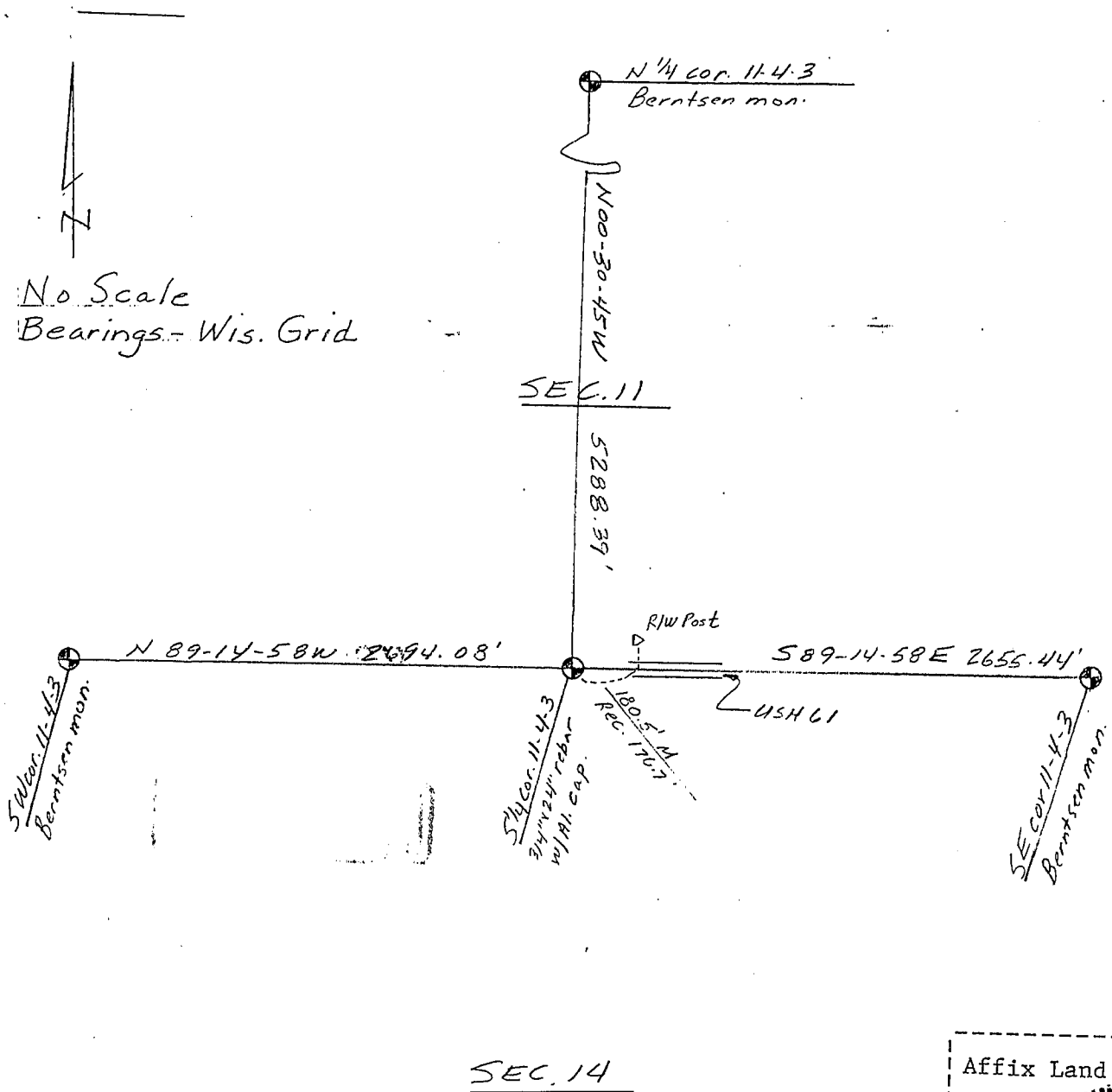


(e) Describe any material discrepancy between the location of the corner as restored or reestablished and the location of that corner as previously restored or reestablished by distance and direction. Show the discrepancy on the plan view drawing under (d), above. Show the distances between the corner as previously restored or reestablished and (1) the corner as restored or reestablished, and (2) to at least 2 of the witness monuments shown on the drawing in (d), above.

(f) Was the corner restored through acceptance of (1) an obliterated evidence location, or, (2) a found perpetuated location?

Reset corner as described in 1981 John M. Halverson survey.

(g&h) Was the corner reestablished through lost corner proportionate methods? If so, show the method, including the directions and distances to other public land survey corners used as evidence or used for proportioning in determining the corner location?



(i) I, Timothy J. Moore
 (type or print name) certify that the corner location shown on this record was determined by me or under my direction and control and that this U.S. Public Land Survey Monument Record is correct and complete to the best of my knowledge and belief.

Signature Timothy J. Moore Date 3-9-88