

## GRANT COUNTY U.S. PUBLIC LAND SURVEY MONUMENT RECORD

INSTRUCTIONS: THIS RECORD SHALL SHOW THE LOCATION OF THE CORNER AND SHALL INCLUDE ALL OF THE FOLLOWING ELEMENTS (A THROUGH I).

(A) IDENTIFY THE CORNER AS REFERENCED TO THE U.S. PUBLIC LAND SURVEY SYSTEM

■ = CORNER MONUMENT RESTORED

WITNESSES TO CORNER LOCATION:

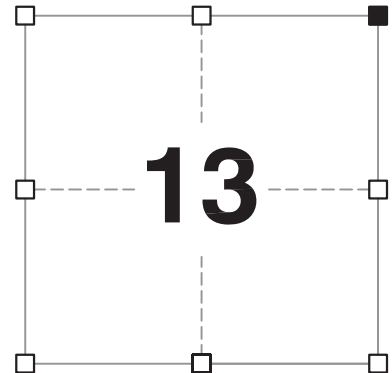
**STEVEN A. ALT**  
**BRADLEY A. SCHROEDER**

GEOGRAPHIC COORDINATES,  
NAD 83 (2011) ADJUSTMENT:

**LATITUDE: 42° 49' 41.68530"**  
**LONGITUDE: 90° 39' 50.86028"**

WISCONSIN COORDINATE REFERENCE SYSTEM (WISCRS),  
GRANT COUNTY, NAD 83 (2011) ADJUSTMENT:

**NORTHING: 516,480.55**  
**EASTING: 831,451.19**



**SECTION 13**  
**TOWNSHIP 4 NORTH, RANGE 3 WEST**  
**TOWN OF SOUTH LANCASTER**

(B) DESCRIBE ANY RECORD EVIDENCE, MONUMENT EVIDENCE, OCCUPATIONAL EVIDENCE, TESTIMONIAL EVIDENCE OR ANY OTHER MATERIAL EVIDENCE YOU CONSIDERED, AND WHETHER THE MONUMENT WAS FOUND OR PLACED.

**I COULD FIND NO MONUMENTS OR BEARING TREES FROM THE ORIGINAL GOVERNMENT SURVEY. I RECOVERED THE #8 REBAR WITH GRANT COUNTY ALUMINUM CAP REFERENCED BY LARRY AUSTIN. THE #8 REBAR WAS ACCEPTED AS THE BEST AVAILABLE EVIDENCE OF THE ORIGINAL GOVERNMENT CORNER AND LEFT IN PLACE BECAUSE TREE ROOTS MADE REPLACEMENT OF THE MONUMENT EXTREMELY DIFFICULT.**

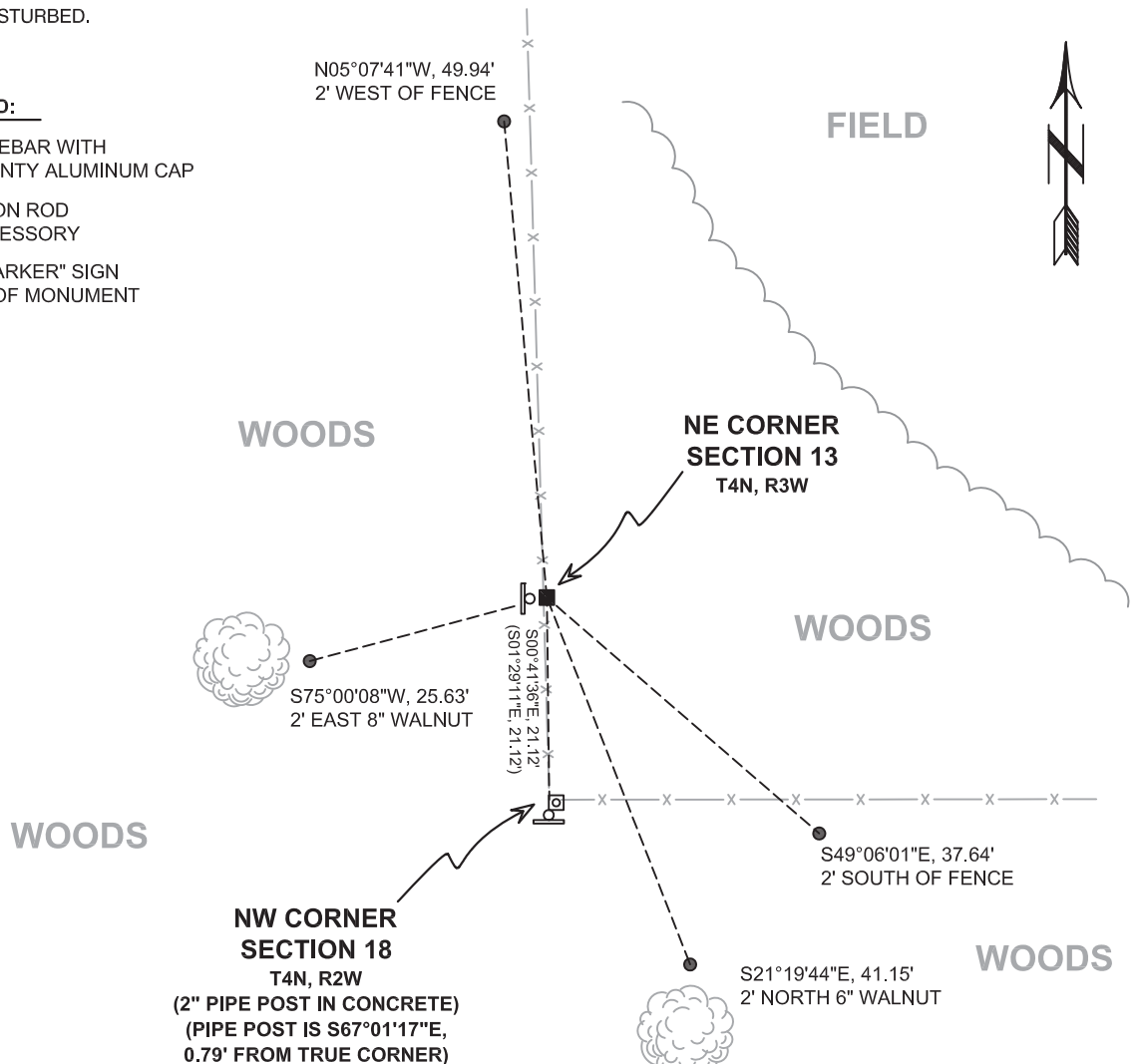
**NOTE REGARDING THE NORTHWEST CORNER OF SECTION 18, T4N, R2W: I FOUND THE PIPE POST TO NOT BE LOCATED ON THE SENIOR RANGE LINE. THE PIPE POST BEARS S67°01'17"E, 0.79 FEET FROM THE COORDINATE OF THE CORNER ON THE SENIOR RANGE LINE AT THE RECORDED OFFSET FROM THE NORTHEAST CORNER OF SECTION 13, T4N, R3W.**

(C) IN THE PLAN VIEW DRAWING BELOW, PROVIDE REFERENCE TIES TO AT LEAST 4 WITNESS MONUMENTS. WITNESS MONUMENTS SHALL BE MADE OF CONCRETE, NATURAL STONE, IRON, BEARING TREES OR ANY OTHER EQUALLY DURABLE MATERIAL. DEPICT THE RELEVANT MONUMENTS AND REFERENCE TIES WITH SUFFICIENT DETAIL TO ENABLE ACCURATE RELOCATION OF THE CORNER IF THE CORNER MONUMENT IS DISTURBED.

(D)

**LEGEND:**

- FOUND #8 REBAR WITH GRANT COUNTY ALUMINUM CAP
- 3/4" x 24" IRON ROD SET AS ACCESSORY
- ⊓ "SURVEY MARKER" SIGN 1' +/- WEST OF MONUMENT



# Remonumentation

(E) DESCRIBE ANY MATERIAL DISCREPANCY BETWEEN THE LOCATION OF THE CORNER AS RESTORED OR REESTABLISHED AND THE LOCATION OF THAT CORNER AS PREVIOUSLY RESTORED OR REESTABLISHED BY DISTANCE AND DIRECTION. SHOW THE DISCREPANCY ON THE PLAN VIEW DRAWING UNDER (D), ABOVE. SHOW THE DISTANCES BETWEEN THE CORNER AS PREVIOUSLY RESTORED OR REESTABLISHED AND (1) THE CORNER AS RESTORED OR REESTABLISHED, AND (2) TO AT LEAST 2 OF THE WITNESS MONUMENTS SHOWN ON THE DRAWING IN (D) ABOVE.

N/A

(F) WAS THE CORNER RESTORED THROUGH ACCEPTANCE OF (1) AN OBLITERATED EVIDENCE LOCATION, OR (2) A FOUND PERPETUATED LOCATION?

(2) A FOUND PERPETUATED LOCATION.

(G&H) WAS THE CORNER REESTABLISHED THROUGH LOST CORNER PROPORTIONATE METHODS? IF SO, SHOW THE METHOD, INCLUDING THE DIRECTIONS AND DISTANCES TO OTHER PUBLIC LAND SURVEY CORNERS USED AS EVIDENCE OR USED FOR PROPORTIONING IN DETERMINING THE CORNER LOCATION.

N/A

## CORNER HISTORY

THE ORIGINAL GOVERNMENT CORNER WAS ESTABLISHED BY SYLVESTER SIBLEY IN THE SECOND QUARTER OF 1832.

IN A TIE SHEET DATED 10 MAY 2008 LARRY AUSTIN SET A #8 x 30" REBAR WITH A GRANT COUNTY ALUMINUM CAP AT THE RECORDED OFFSET FROM THE NORTHWEST CORNER OF SECTION 18, T4N, R2W.

(I) I, JAY P. ADAMS, P.L.S. - 2879, CERTIFY THAT THE CORNER LOCATION SHOWN ON THIS RECORD WAS DETERMINED BY ME OR UNDER MY DIRECTION AND CONTROL AND THAT THIS U.S. PUBLIC LAND SURVEY MONUMENT RECORD IS CORRECT AND COMPLETE TO THE BEST OF MY KNOWLEDGE AND BELIEF.

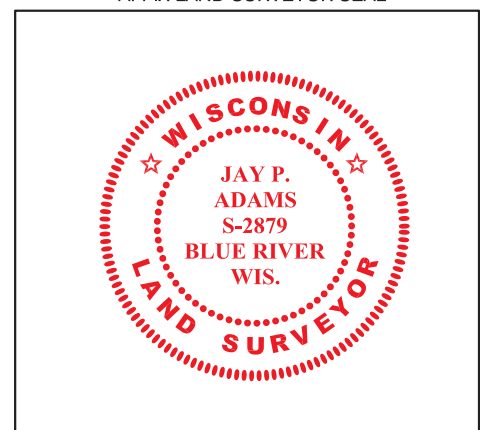


SIGNATURE

3 JANUARY 2019

DATE

AFFIX LAND SURVEYOR SEAL



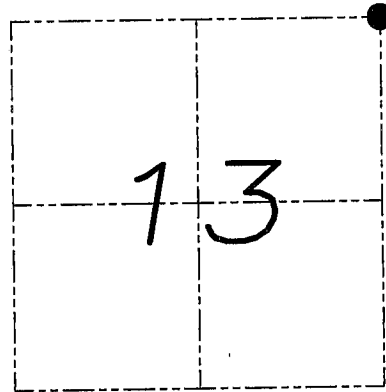
# U.S. PUBLIC LAND SURVEY MONUMENT RECORD

Section 13, Town 4 North Range 3 West, Town of South Lancaster, Grant County, Wisconsin

## CERTIFICATE

I, Larry L. Austin, do hereby certify that the corner location on this record was determined by me and/or under my direct supervision and that this U.S. public land survey monument record is correct and complete to the best of my knowledge and belief.

*Larry L. Austin*  
 Larry L. Austin, S-19103  
 LANCASTER  
 WI  
 LAND SURVEYOR  
 5.10.08  
 date



● = CORNER LOCATION

## HISTORY OF CORNER

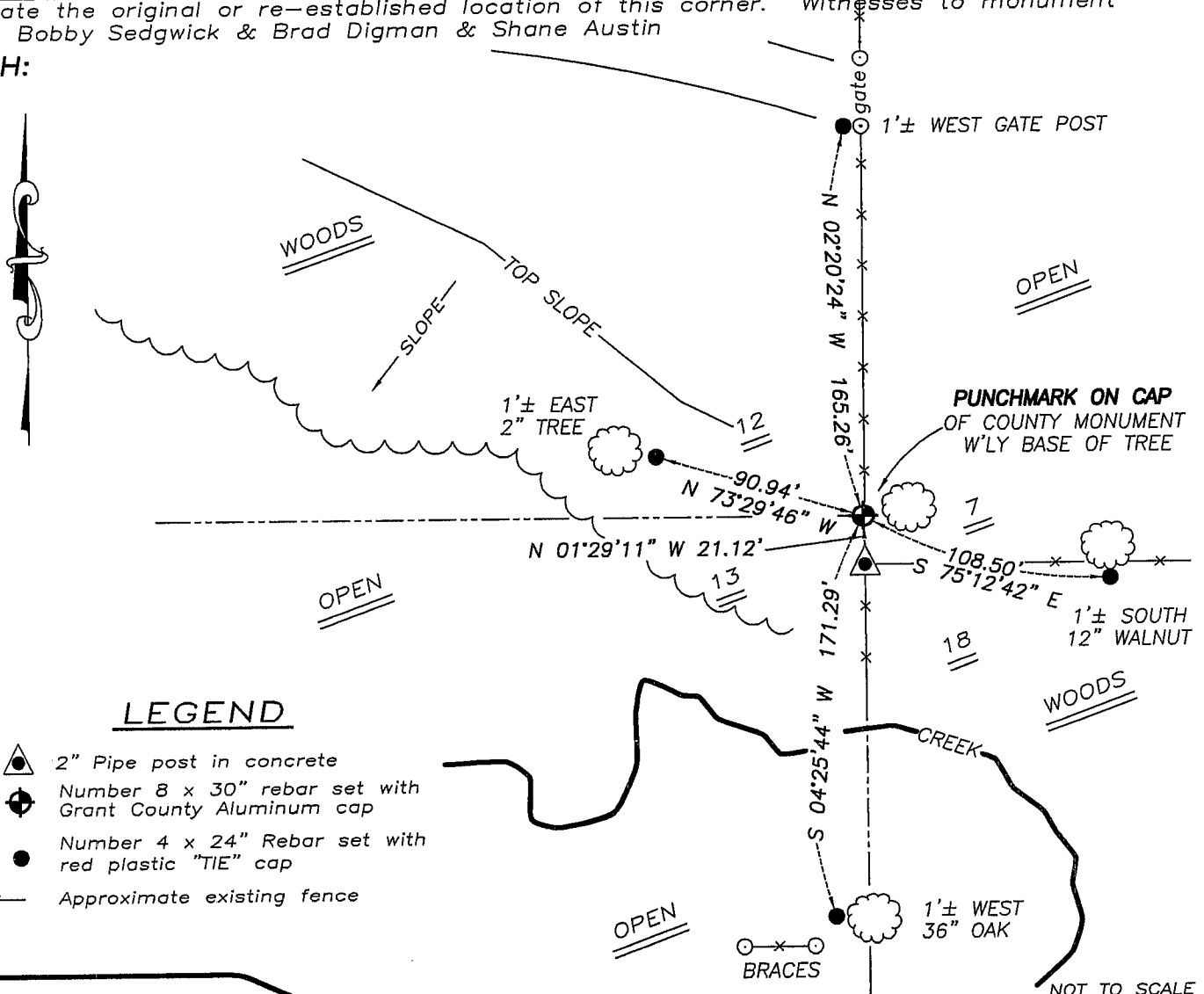
Corner was originally set by Lyon.  
 No other record of the corner was found.

## CORNER EVIDENCE FOUND

I reset the corner at the recorded offset from the Northwest corner of Section 18, T4N R2W. Verified this location using EDM & GPS methods.

**DESCRIPTION OF CORNER AND WITNESS MONUMENTS,** references and accessories used to perpetuate the original or re-established location of this corner. Witnesses to monument location Bobby Sedgwick & Brad Digman & Shane Austin

## SKETCH:



## LEGEND

- ▲ 2" Pipe post in concrete
- ⊕ Number 8 x 30" rebar set with Grant County Aluminum cap
- Number 4 x 24" Rebar set with red plastic "TIE" cap
- x- Approximate existing fence



**Austin  
 Engineering LLC**

4211 HWY 81 E, LANCASTER, WI 53813  
 PHONE 608-723-6363 FAX 608-723-6702

JOB NUMBER 07S295  
 FIELDBOOK: TDSR, 2802  
 G:\T4NR2W\T4NR2W  
 H:\TIE\T4NR2W\41

DRAWN BY: SW AUSTIN  
 APPROVED: LL AUSTIN