

## GRANT COUNTY U.S. PUBLIC LAND SURVEY MONUMENT RECORD

INSTRUCTIONS: THIS RECORD SHALL SHOW THE LOCATION OF THE CORNER AND SHALL INCLUDE ALL OF THE FOLLOWING ELEMENTS (A THROUGH I).

(A) IDENTIFY THE CORNER AS REFERENCED TO THE U.S. PUBLIC LAND SURVEY SYSTEM

■ = CORNER MONUMENT RESTORED

WITNESSES TO CORNER LOCATION:

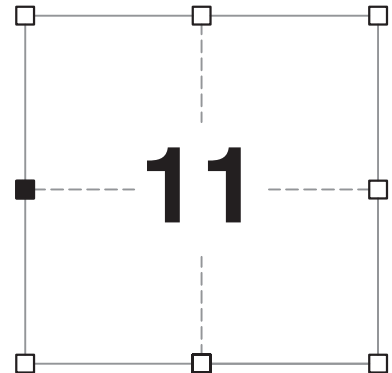
**JAY P. ADAMS**  
**TYLER D. ATKINSON**

GEOGRAPHIC COORDINATES,  
NAD 83 (2011) ADJUSTMENT:

**LATITUDE:** 42° 50' 07.09107"  
**LONGITUDE:** 90° 42' 14.70408"

WISCONSIN COORDINATE REFERENCE SYSTEM (WISCRS),  
GRANT COUNTY, NAD 83 (2011) ADJUSTMENT:

**NORTHING:** 519,037.99  
**EASTING:** 820,728.87



**SECTION 11**  
**TOWNSHIP 4 NORTH, RANGE 3 WEST**  
**TOWN OF SOUTH LANCASTER**

(B) DESCRIBE ANY RECORD EVIDENCE, MONUMENT EVIDENCE, OCCUPATIONAL EVIDENCE, TESTIMONIAL EVIDENCE OR ANY OTHER MATERIAL EVIDENCE YOU CONSIDERED, AND WHETHER THE MONUMENT WAS FOUND OR PLACED.

**I COULD FIND NO MONUMENTS OR BEARING TREES FROM THE ORIGINAL GOVERNMENT SURVEY OR THE HISTORIC COUNTY SURVEYOR'S SUBSEQUENT RESURVEY. I RECOVERED THE CAST ALUMINUM MONUMENT SET BY MOORE AND ACCEPTED THIS LOCATION AS THE BEST AVAILABLE EVIDENCE OF THE ORIGINAL GOVERNMENT CORNER AND LEFT IT IN PLACE BECAUSE OF ADEQUATE STABILITY.**

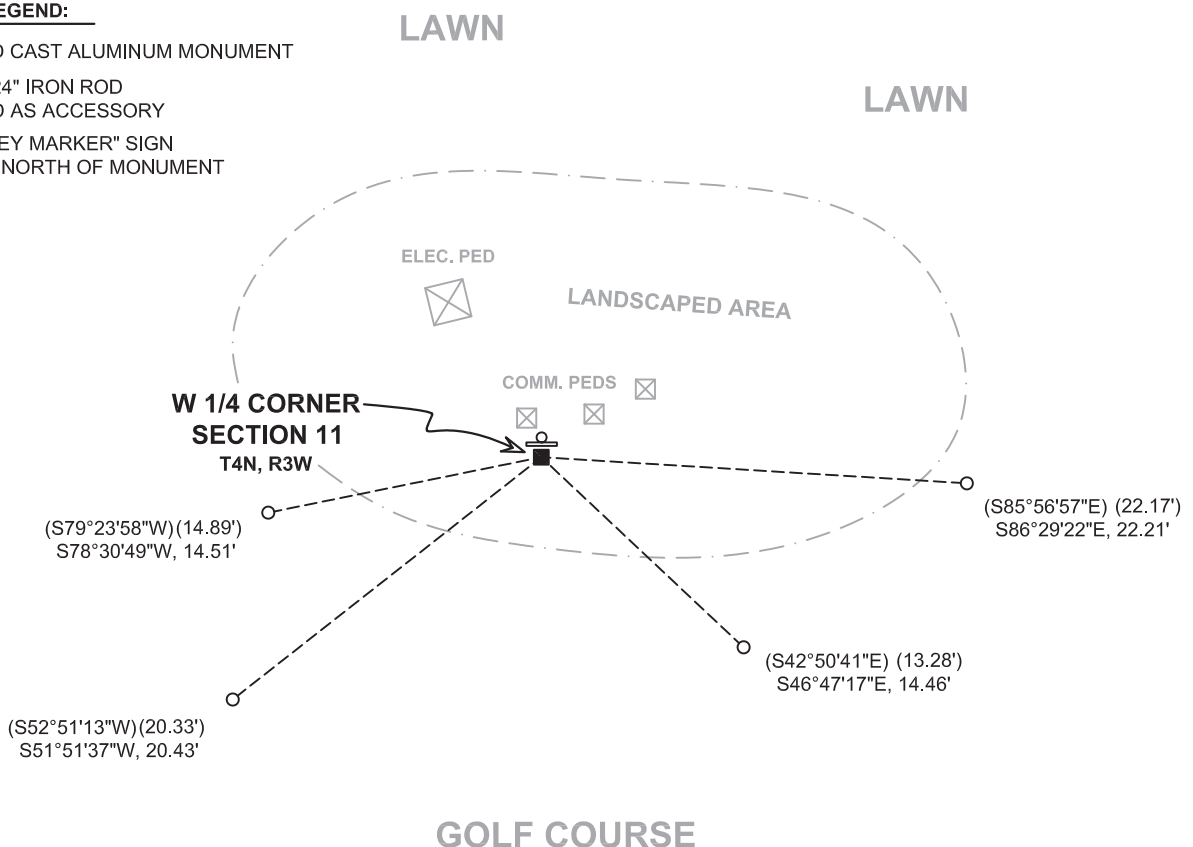
**NOTE: THIS MONUMENT IS DIFFICULT TO LOCATE WITH A MAGNETIC LOCATOR BECAUSE OF CLOSE PROXIMITY TO A PHONE PEDESTAL. THE MONUMENT IS LOCATED 0.3' SOUTH OF THE "SURVEY MARKER" SIGN POST.**

(C) IN THE PLAN VIEW DRAWING BELOW, PROVIDE REFERENCE TIES TO AT LEAST 4 WITNESS MONUMENTS. WITNESS MONUMENTS SHALL BE MADE OF CONCRETE, NATURAL STONE, IRON, BEARING TREES OR ANY OTHER EQUALLY DURABLE MATERIAL. DEPICT THE RELEVANT MONUMENTS AND REFERENCE TIES WITH SUFFICIENT DETAIL TO ENABLE ACCURATE RELOCATION OF THE CORNER IF THE CORNER MONUMENT IS DISTURBED.

(D)

**LEGEND:**

- FOUND CAST ALUMINUM MONUMENT
- 3/4" x 24" IRON ROD FOUND AS ACCESSORY
- ⌏ "SURVEY MARKER" SIGN 0.3' +/- NORTH OF MONUMENT



# Remonumentation

(E) DESCRIBE ANY MATERIAL DISCREPANCY BETWEEN THE LOCATION OF THE CORNER AS RESTORED OR REESTABLISHED AND THE LOCATION OF THAT CORNER AS PREVIOUSLY RESTORED OR REESTABLISHED BY DISTANCE AND DIRECTION. SHOW THE DISCREPANCY ON THE PLAN VIEW DRAWING UNDER (D), ABOVE. SHOW THE DISTANCES BETWEEN THE CORNER AS PREVIOUSLY RESTORED OR REESTABLISHED AND (1) THE CORNER AS RESTORED OR REESTABLISHED, AND (2) TO AT LEAST 2 OF THE WITNESS MONUMENTS SHOWN ON THE DRAWING IN (D) ABOVE.

N/A

(F) WAS THE CORNER RESTORED THROUGH ACCEPTANCE OF (1) AN OBLITERATED EVIDENCE LOCATION, OR (2) A FOUND PERPETUATED LOCATION?

(2) A FOUND PERPETUATED LOCATION.

(G&H) WAS THE CORNER REESTABLISHED THROUGH LOST CORNER PROPORTIONATE METHODS? IF SO, SHOW THE METHOD, INCLUDING THE DIRECTIONS AND DISTANCES TO OTHER PUBLIC LAND SURVEY CORNERS USED AS EVIDENCE OR USED FOR PROPORTIONING IN DETERMINING THE CORNER LOCATION.

N/A

## CORNER HISTORY

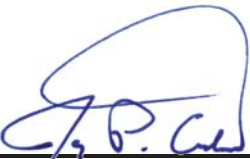
THE ORIGINAL GOVERNMENT CORNER WAS ESTABLISHED BY ROBERT CLARK JR. IN THE FIRST QUARTER OF 1833.

IN A SURVEY DATED 7 SEPTEMBER 1849, GEO. STUNTZ WAS AT THE CORNER.

IN A TIE SHEET DATED 9 MARCH 1988, TIMOTHY MOORE SET A BERNTSEN CAST ALUMINUM MONUMENT IN PLACE OF A 1.5" IRON PIPE AS SHOWN ON COVENTRY ESTATES SUBDIVISION PLAT.

SINCE THEN, THE CAST ALUMINUM MONUMENT HAS BEEN RECOVERED IN MANY AREA SURVEYS.

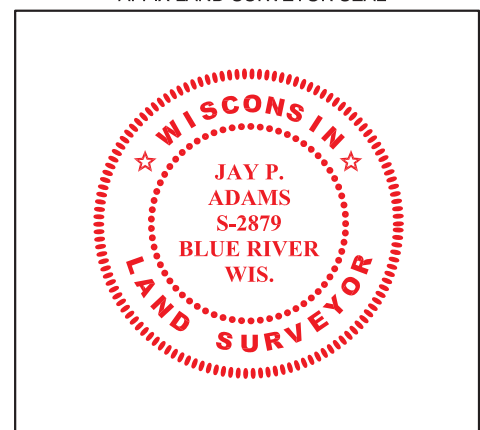
(I) I, JAY P. ADAMS, P.L.S. - 2879, CERTIFY THAT THE CORNER LOCATION SHOWN ON THIS RECORD WAS DETERMINED BY ME OR UNDER MY DIRECTION AND CONTROL AND THAT THIS U.S. PUBLIC LAND SURVEY MONUMENT RECORD IS CORRECT AND COMPLETE TO THE BEST OF MY KNOWLEDGE AND BELIEF.

  
SIGNATURE

2 JANUARY 2019

DATE

AFFIX LAND SURVEYOR SEAL



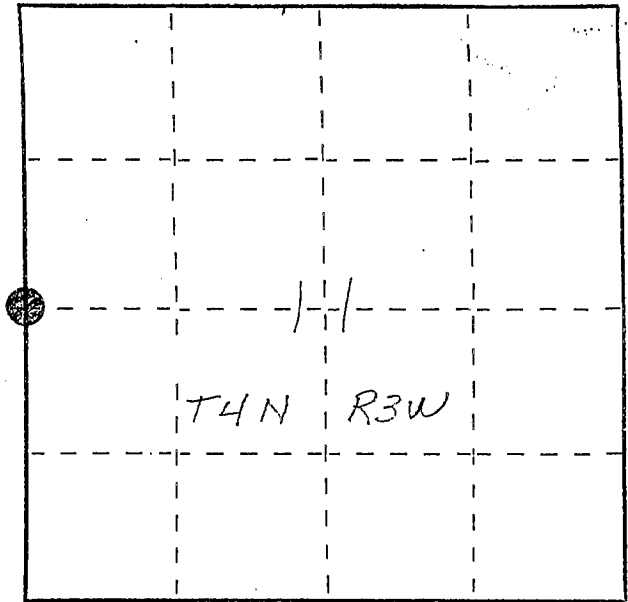
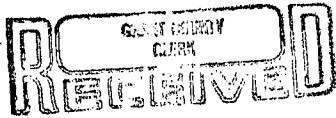
# U. S. PUBLIC LAND SURVEY MONUMENT RECORD

INSTRUCTIONS: This record shall show the location of the corner and shall include all of the following nine elements (a through i).

(a) Identify the corner by reference to the U.S. public land survey system.

● = Corner monument restored.

W<sup>1</sup>/<sub>4</sub> corner section 11  
T4N R3W of the  
4th P.M.,  
Town of South Lancaster  
Grant County, Wisconsin.



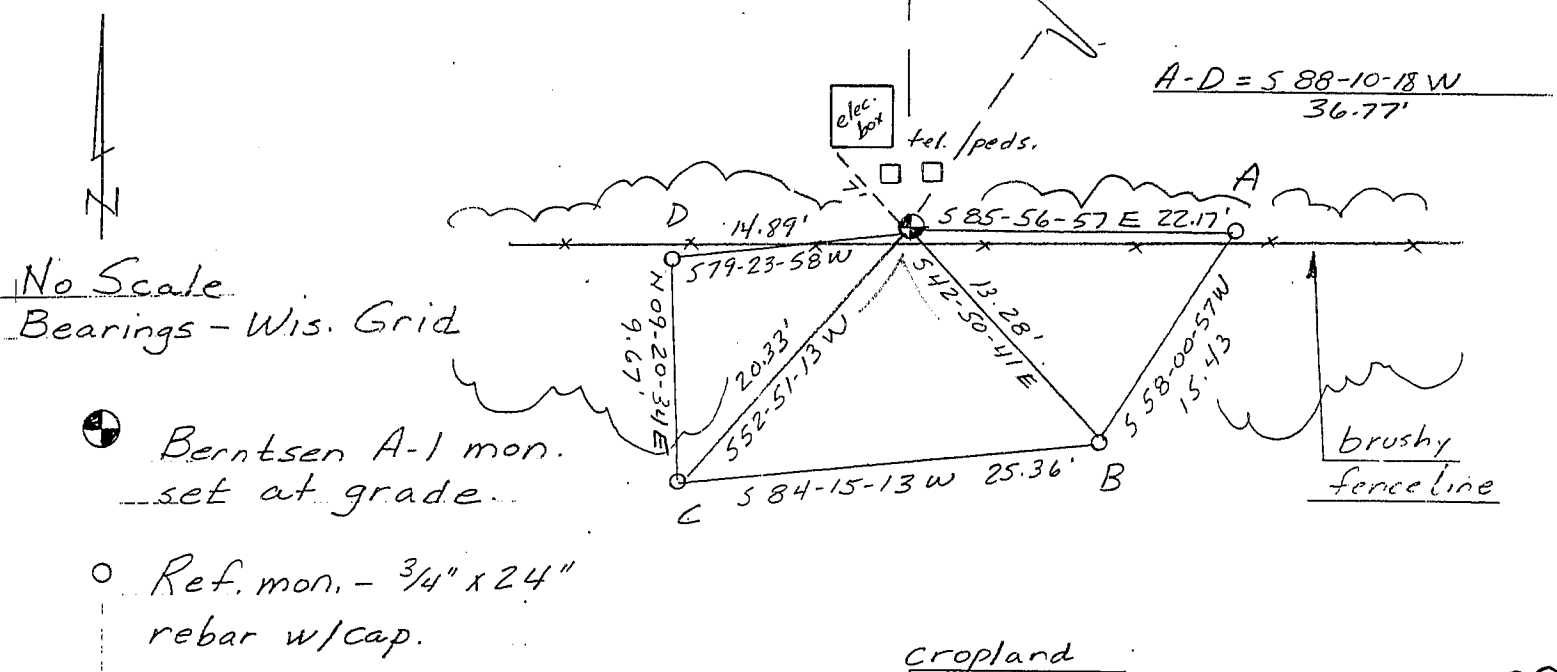
APR 27 1988

(b) Describe any record evidence, monument evidence, occupational evidence, testimonial evidence or any other material evidence you considered, and whether the monument was found or placed.

Monument set replaces a 1 1/2" iron pipe of record as shown on Coventry Estates Subdivision Plat.

(c) In the plan view drawing below, provide reference ties to at least 4 witness monuments, or, if the location is within a municipality, to at least 2 witness monuments. (Witness monuments shall be made of concrete, natural stone, iron or other equally durable material, ~~except wood.~~) Describe witness monuments.

(d) Show a plan view drawing depicting the relevant monuments and reference ties which is sufficient in detail to enable accurate relocation of the corner monument if the corner monument is disturbed. Indicate north.

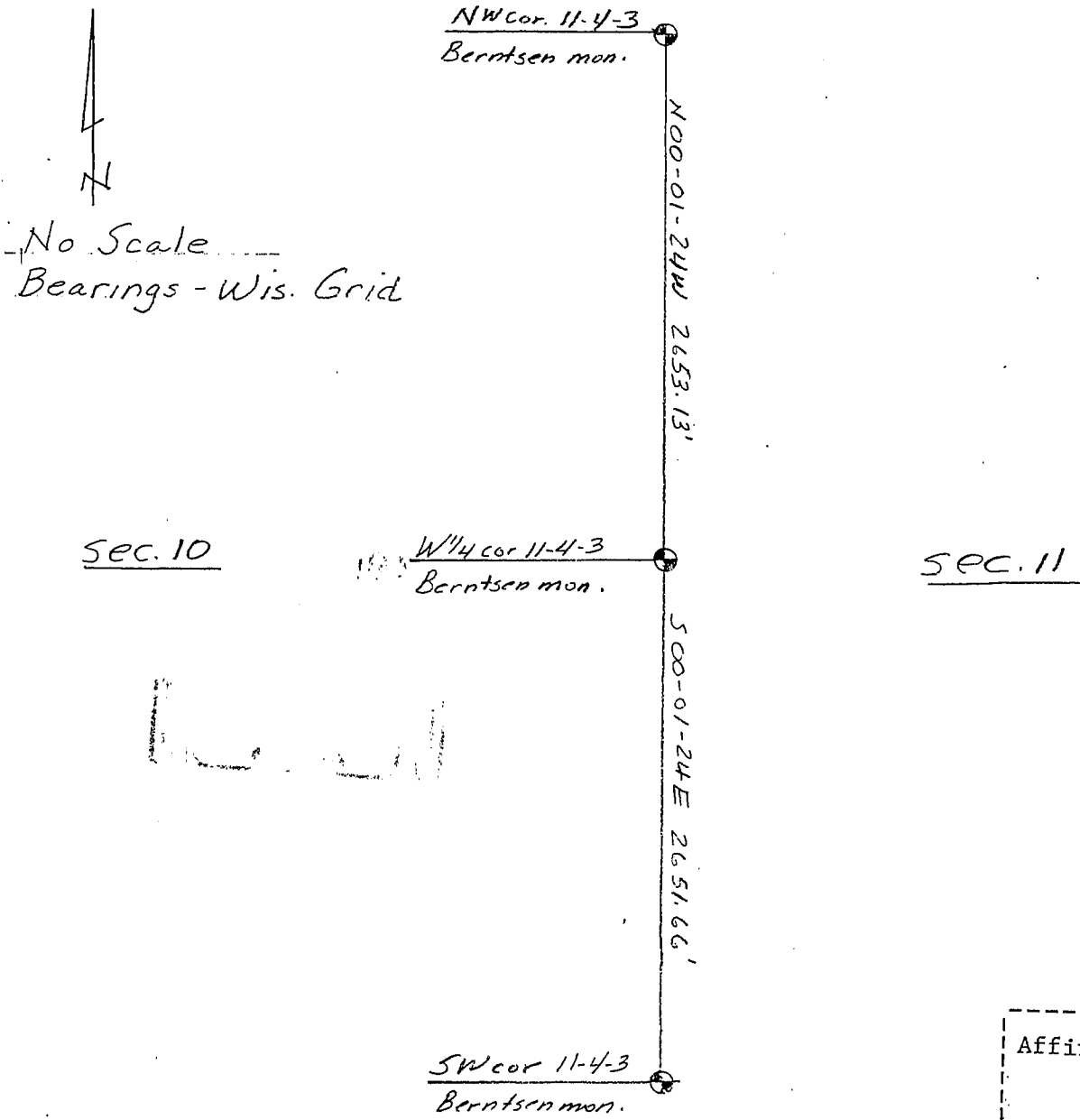


(e) Describe any material discrepancy between the location of the corner as restored or reestablished and the location of that corner as previously restored or reestablished by distance and direction. Show the discrepancy on the plan view drawing under (d), above. Show the distances between the corner as previously restored or reestablished and (1) the corner as restored or reestablished, and (2) to at least 2 of the witness monuments shown on the drawing in (d), above.

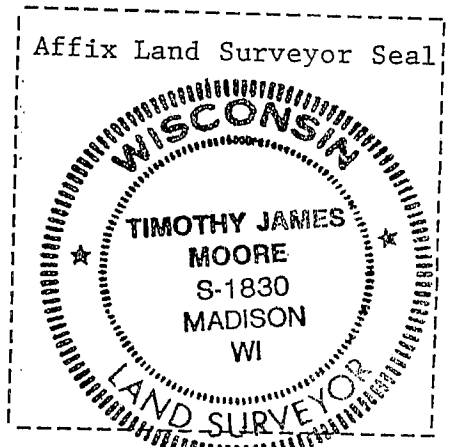
(f) Was the corner restored through acceptance of (1) an obliterated evidence location, or, (2) a found perpetuated location?

Accepted 1 1/2" iron pipe as shown on Coventry Estates Subdivision Plat.

(g&h) Was the corner reestablished through lost corner proportionate methods? If so, show the method, including the directions and distances to other public land survey corners used as evidence or used for proportioning in determining the corner location?



(i) I, Timothy J. Moore  
 (type or print name) certify that the corner location shown on this record was determined by me or under my direction and control and that this U.S. Public Land Survey Monument Record is correct and complete to the best of my knowledge and belief.



Timothy J. Moore 3-9-88  
 Signature Date