

GRANT COUNTY U.S. PUBLIC LAND SURVEY MONUMENT RECORD

INSTRUCTIONS: THIS RECORD SHALL SHOW THE LOCATION OF THE CORNER AND SHALL INCLUDE ALL OF THE FOLLOWING ELEMENTS (A THROUGH I).

(A) IDENTIFY THE CORNER AS REFERENCED TO THE U.S. PUBLIC LAND SURVEY SYSTEM

■ = CORNER MONUMENT RESTORED

WITNESSES TO CORNER LOCATION:

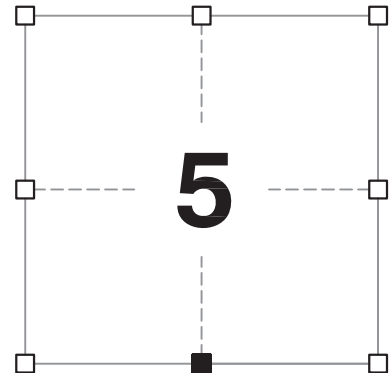
JAY P. ADAMS
STEVEN A. ALT

GEOGRAPHIC COORDINATES,
NAD 83 (2011) ADJUSTMENT:

LATITUDE: 42° 50' 33.58478"
LONGITUDE: 90° 45' 12.71161"

WISCONSIN COORDINATE REFERENCE SYSTEM (WISCRS),
GRANT COUNTY, NAD 83 (2011) ADJUSTMENT:

NORTHING: 521,709.12
EASTING: 807,463.60



SECTION 5
TOWNSHIP 4 NORTH, RANGE 3 WEST
TOWN OF SOUTH LANCASTER

(B) DESCRIBE ANY RECORD EVIDENCE, MONUMENT EVIDENCE, OCCUPATIONAL EVIDENCE, TESTIMONIAL EVIDENCE OR ANY OTHER MATERIAL EVIDENCE YOU CONSIDERED, AND WHETHER THE MONUMENT WAS FOUND OR PLACED.

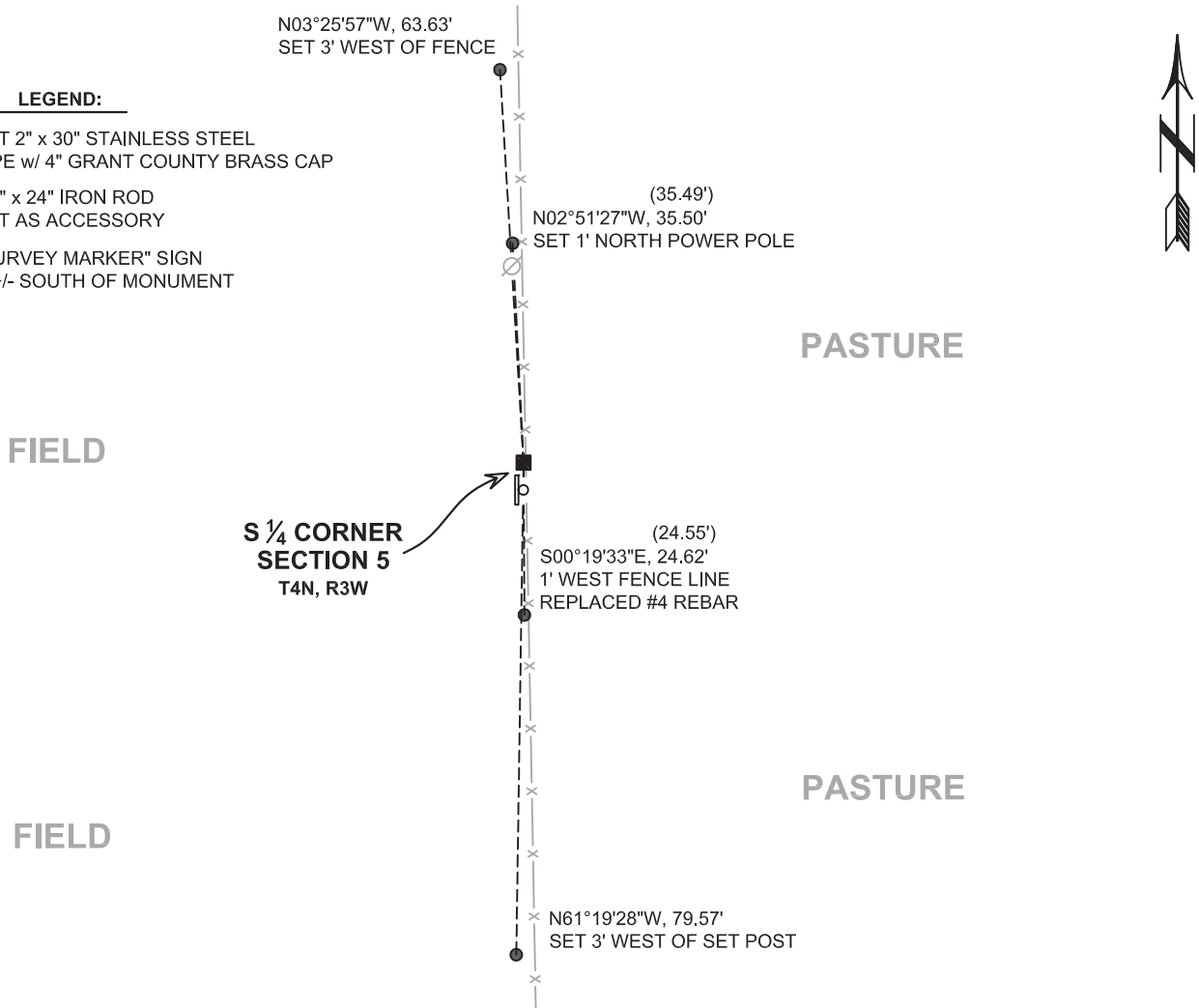
I COULD FIND NO MONUMENTS OR BEARING TREES FROM THE ORIGINAL GOVERNMENT SURVEY OR THE HISTORIC COUNTY SURVEYOR'S SUBSEQUENT RESURVEY. I RECOVERED THE #6 x 24" REBAR AND ALUMINUM CAP REFERENCED BY AUSTIN. I ACCEPTED THIS LOCATION AS THE BEST AVAILABLE EVIDENCE OF THE CORNER AND REMONUMENTED IT WITH A 2" x 30" STAINLESS STEEL PIPE WITH A 4" GRANT COUNTY BRASS CAP.

(C) IN THE PLAN VIEW DRAWING BELOW, PROVIDE REFERENCE TIES TO AT LEAST 4 WITNESS MONUMENTS. WITNESS MONUMENTS SHALL BE MADE OF CONCRETE, NATURAL STONE, IRON, BEARING TREES OR ANY OTHER EQUALLY DURABLE MATERIAL. DEPICT THE RELEVANT MONUMENTS AND REFERENCE TIES WITH SUFFICIENT DETAIL TO ENABLE ACCURATE RELOCATION OF THE CORNER IF THE CORNER MONUMENT IS DISTURBED.

(D)

LEGEND:

- SET 2" x 30" STAINLESS STEEL PIPE w/ 4" GRANT COUNTY BRASS CAP
- 3/4" x 24" IRON ROD SET AS ACCESSORY
- ⊞ "SURVEY MARKER" SIGN 1' +/- SOUTH OF MONUMENT



Remonumentation

(E) DESCRIBE ANY MATERIAL DISCREPANCY BETWEEN THE LOCATION OF THE CORNER AS RESTORED OR REESTABLISHED AND THE LOCATION OF THAT CORNER AS PREVIOUSLY RESTORED OR REESTABLISHED BY DISTANCE AND DIRECTION. SHOW THE DISCREPANCY ON THE PLAN VIEW DRAWING UNDER (D), ABOVE. SHOW THE DISTANCES BETWEEN THE CORNER AS PREVIOUSLY RESTORED OR REESTABLISHED AND (1) THE CORNER AS RESTORED OR REESTABLISHED, AND (2) TO AT LEAST 2 OF THE WITNESS MONUMENTS SHOWN ON THE DRAWING IN (D) ABOVE.

N/A

(F) WAS THE CORNER RESTORED THROUGH ACCEPTANCE OF (1) AN OBLITERATED EVIDENCE LOCATION, OR (2) A FOUND PERPETUATED LOCATION?

(2) A FOUND PERPETUATED LOCATION.

(G&H) WAS THE CORNER REESTABLISHED THROUGH LOST CORNER PROPORTIONATE METHODS? IF SO, SHOW THE METHOD, INCLUDING THE DIRECTIONS AND DISTANCES TO OTHER PUBLIC LAND SURVEY CORNERS USED AS EVIDENCE OR USED FOR PROPORTIONING IN DETERMINING THE CORNER LOCATION.

N/A

CORNER HISTORY

THE ORIGINAL GOVERNMENT CORNER WAS ESTABLISHED BY ROBERT CLARK, JR. IN THE FIRST QUARTER OF 1833.

IN A SURVEY DATED 13 DECEMBER 1842, FREEMAN WAS AT THE CORNER.

IN A TIE SHEET DATED 20 SEPTEMBER 1996, LARRY AUSTIN SET A #6 x 24" REBAR WITH A GRANT COUNTY ALUMINUM CAP AFTER EXAMINING OCCUPATIONAL EVIDENCE IN THE AREA. AUSTIN USED THIS MONUMENT IN A PLAT OF SURVEY ON THE SAME DATE.

IN A PLAT OF SURVEY DATED 7 JUNE 2000, BOWDEN FOUND THE GRANT COUNTY ALUMINUM CAP.

IN A PLAT OF SURVEY DATED 20 MAY 2008, LARRY AUSTIN FOUND THE NUMBER 6 REBAR WITH GRANT COUNTY ALUMINUM CAP.

IN AN ALTA SURVEY DATED 12 NOVEMBER 2012, JIMMY ROSE FOUND THE GRANT COUNTY ALUMINUM CAP.

(I) I, JAY P. ADAMS, P.L.S. - 2879, CERTIFY THAT THE CORNER LOCATION SHOWN ON THIS RECORD WAS DETERMINED BY ME OR UNDER MY DIRECTION AND CONTROL AND THAT THIS U.S. PUBLIC LAND SURVEY MONUMENT RECORD IS CORRECT AND COMPLETE TO THE BEST OF MY KNOWLEDGE AND BELIEF.

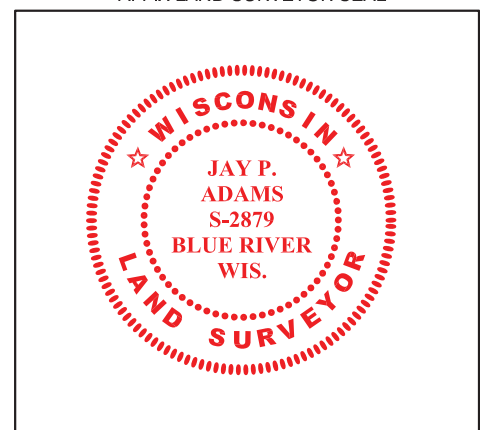


SIGNATURE

18 JANUARY 2019

DATE

AFFIX LAND SURVEYOR SEAL



GRANT COUNTY

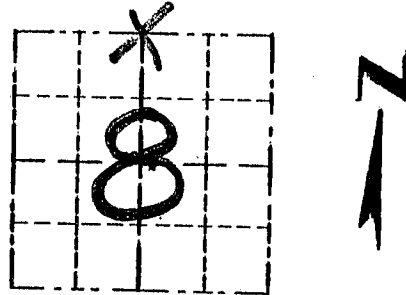
Survey Monument Record

TYPE OF MONUMENT 3/4" X 24" IRON BAR SET W/
 STATE PLANE COORDINATES: N _____ CAP. _____
 E _____
 ELEVATION — M.S.L. DATUM: _____
 THETA ANGLE: _____
 FIELD BOOK: 96-06
 PAGE _____

CORNER NO. 30
 SECTION 8
 TOWN 4N
 RANGE 3W

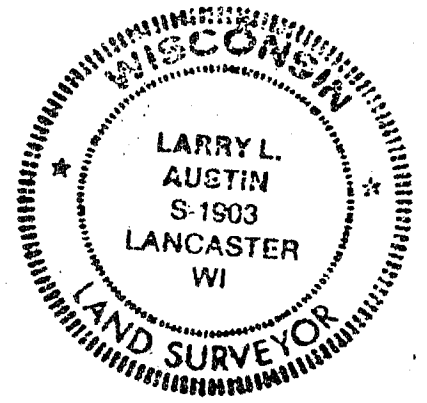
BASIS FOR MONUMENT LOCATION

(Use reverse side if necessary)



LOCATION
(Indicated by "X")

CORNER SET IN 1833 BY ROBERT CLARK. ORIGINAL BEARING TREES SEAL: WERE UNRECOVERABLE. NO RECORD OF COR. FOUND SINCE ORIGINAL SURVEYS. CORNER SET ONLINE WITH OCCUPIED 40 TO WEST AND THE NORTHWEST CORNER OF SECTION FOR NORTHING, FOR EASTING I ACCEPTED A NORTH/SOUTH FENCE. VERIFIED THIS LOCATION USING EDM METHODS.



CERTIFIED CORRECT

Larry L. Austin
 Registered Land Surveyor

DATE: 9/30/96

TIE SKETCH

Show at least three (3) ties and monument

FIELDS

PASTURE

PASTURE

LEGEND

● 3/4" X 24" IRON BAR SET W/ CAP.

○ 1/2" X 18" IRON BAR SET

— X — X — EXISTING FENCE

