

GRANT COUNTY U.S. PUBLIC LAND SURVEY MONUMENT RECORD

INSTRUCTIONS: THIS RECORD SHALL SHOW THE LOCATION OF THE CORNER AND SHALL INCLUDE ALL OF THE FOLLOWING ELEMENTS (A THROUGH I).

(A) IDENTIFY THE CORNER AS REFERENCED TO THE U.S. PUBLIC LAND SURVEY SYSTEM

■ = CORNER MONUMENT RESTORED

WITNESSES TO CORNER LOCATION:

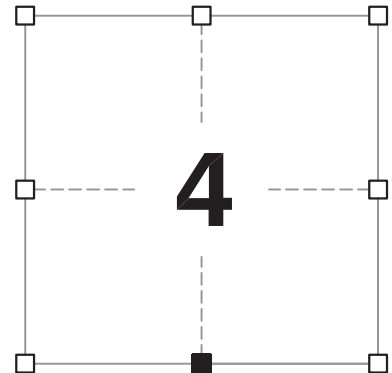
JAY P. ADAMS
TYLER D. ATKINSON

GEOGRAPHIC COORDINATES,
NAD 83 (2011) ADJUSTMENT:

LATITUDE: 42° 50' 33.62645"
LONGITUDE: 90° 44' 01.75544"

WISCONSIN COORDINATE REFERENCE SYSTEM (WISCRS),
GRANT COUNTY, NAD 83 (2011) ADJUSTMENT:

NORTHING: 521,716.87
EASTING: 812,750.09



SECTION 4
TOWNSHIP 4 NORTH, RANGE 3 WEST
TOWN OF SOUTH LANCASTER

(B) DESCRIBE ANY RECORD EVIDENCE, MONUMENT EVIDENCE, OCCUPATIONAL EVIDENCE, TESTIMONIAL EVIDENCE OR ANY OTHER MATERIAL EVIDENCE YOU CONSIDERED, AND WHETHER THE MONUMENT WAS FOUND OR PLACED.

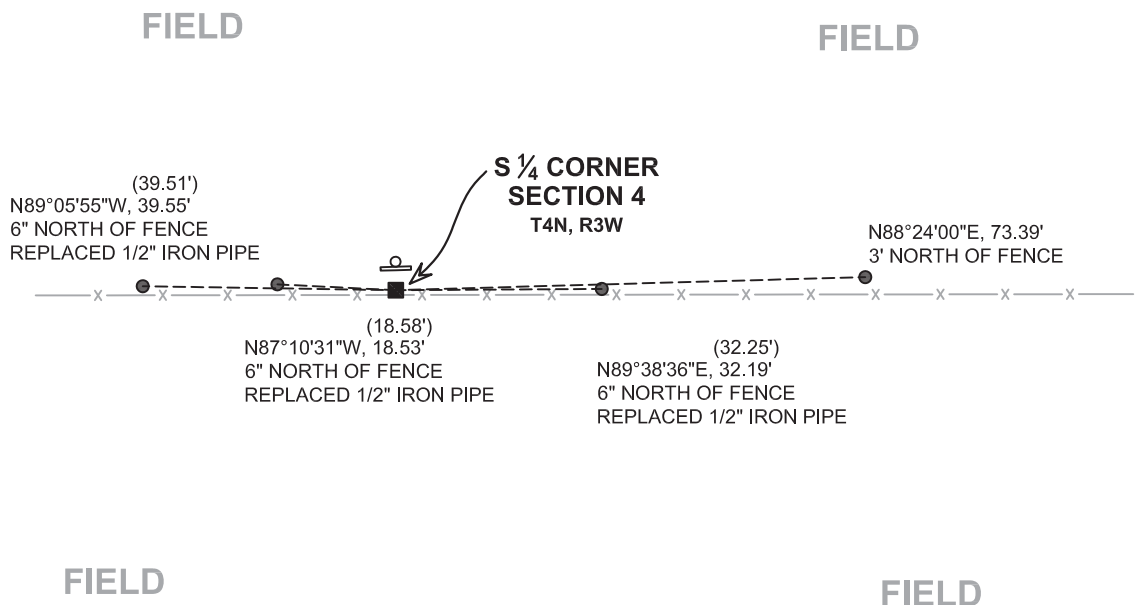
I COULD FIND NO MONUMENTS OR BEARING TREES FROM THE ORIGINAL GOVERNMENT SURVEY. I RECOVERED THE #8 x 30" REBAR AND ALUMINUM CAP REFERENCED BY AUSTIN. I ACCEPTED THIS LOCATION AS THE BEST AVAILABLE EVIDENCE OF THE CORNER AND REMONUMENTED IT WITH A 2" x 30" STAINLESS STEEL PIPE WITH A 4" GRANT COUNTY BRASS CAP.

(C) IN THE PLAN VIEW DRAWING BELOW, PROVIDE REFERENCE TIES TO AT LEAST 4 WITNESS MONUMENTS. WITNESS MONUMENTS SHALL BE MADE OF CONCRETE, NATURAL STONE, IRON, BEARING TREES OR ANY OTHER EQUALLY DURABLE MATERIAL. DEPICT THE RELEVANT MONUMENTS AND REFERENCE TIES WITH SUFFICIENT DETAIL TO ENABLE ACCURATE RELOCATION OF THE CORNER IF THE CORNER MONUMENT IS DISTURBED.

(D)

LEGEND:

- SET 2" x 30" STAINLESS STEEL PIPE w/ 4" GRANT COUNTY BRASS CAP
- 3/4" x 24" IRON ROD SET AS ACCESSORY
- ⌋ "SURVEY MARKER" SIGN 1' +/- NORTH OF MONUMENT



Remonumentation

(E) DESCRIBE ANY MATERIAL DISCREPANCY BETWEEN THE LOCATION OF THE CORNER AS RESTORED OR REESTABLISHED AND THE LOCATION OF THAT CORNER AS PREVIOUSLY RESTORED OR REESTABLISHED BY DISTANCE AND DIRECTION. SHOW THE DISCREPANCY ON THE PLAN VIEW DRAWING UNDER (D), ABOVE. SHOW THE DISTANCES BETWEEN THE CORNER AS PREVIOUSLY RESTORED OR REESTABLISHED AND (1) THE CORNER AS RESTORED OR REESTABLISHED, AND (2) TO AT LEAST 2 OF THE WITNESS MONUMENTS SHOWN ON THE DRAWING IN (D) ABOVE.

N/A

(F) WAS THE CORNER RESTORED THROUGH ACCEPTANCE OF (1) AN OBLITERATED EVIDENCE LOCATION, OR (2) A FOUND PERPETUATED LOCATION?

(2) A FOUND PERPETUATED LOCATION.

(G&H) WAS THE CORNER REESTABLISHED THROUGH LOST CORNER PROPORTIONATE METHODS? IF SO, SHOW THE METHOD, INCLUDING THE DIRECTIONS AND DISTANCES TO OTHER PUBLIC LAND SURVEY CORNERS USED AS EVIDENCE OR USED FOR PROPORTIONING IN DETERMINING THE CORNER LOCATION.

N/A

CORNER HISTORY

THE ORIGINAL GOVERNMENT CORNER WAS ESTABLISHED BY ROBERT CLARK, JR. IN THE FIRST QUARTER OF 1833.

IN A TIE SHEET DATED 18 APRIL 1996, MICHAEL LAROSA ACCEPTED AN ANGLE IRON POST AS THE CORNER.

THIS MONUMENT HAS BEEN UTILIZED IN MANY SURVEYS.

IN THE MOST RECENT TIE SHEET DATED 1 AUGUST 2013, AARON AUSTIN FOUND A DISTURBED NUMBER 7 REBAR WITH A GRANT COUNTY ALUMINUM CAP. AUSTIN FOUND TIES FROM LAROSA'S TIE SHEET AND REMONUMENTED THE CORNER WITH A #8 x 30" REBAR WITH A GRANT COUNTY ALUMINUM CAP.

AFFIX LAND SURVEYOR SEAL

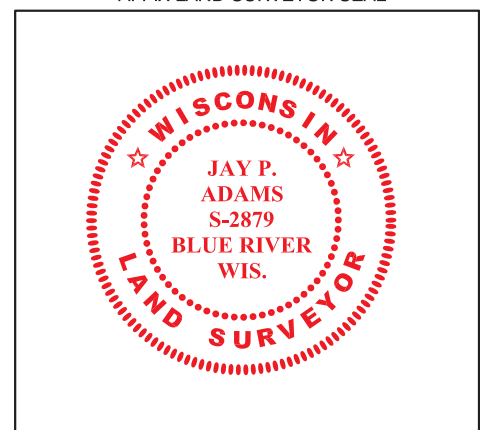
(I) I, JAY P. ADAMS, P.L.S. - 2879, CERTIFY THAT THE CORNER LOCATION SHOWN ON THIS RECORD WAS DETERMINED BY ME OR UNDER MY DIRECTION AND CONTROL AND THAT THIS U.S. PUBLIC LAND SURVEY MONUMENT RECORD IS CORRECT AND COMPLETE TO THE BEST OF MY KNOWLEDGE AND BELIEF.



SIGNATURE

19 JANUARY 2019

DATE



U.S. PUBLIC LAND SURVEY MONUMENT RECORD - GRANT COUNTY, WI

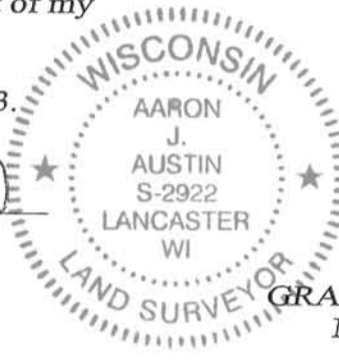
Section 4, Town 4 North Range 3 West, Town of South Lancaster

CERTIFICATE:

I, Aaron J. Austin, do hereby certify that the corner location on this record was determined by me and/or under my direct supervision and that this U.S. Public Land Survey Monument Record is correct and complete to the best of my knowledge and belief.

Dated this 1st day of August, 2013.

Aaron J. Austin
 Aaron J. Austin, S-2922



● = CORNER LOCATION

GRANT COUNTY COORDINATES:
 N=521716.82 E=812750.05

HISTORY OF CORNER ESTABLISHMENT:

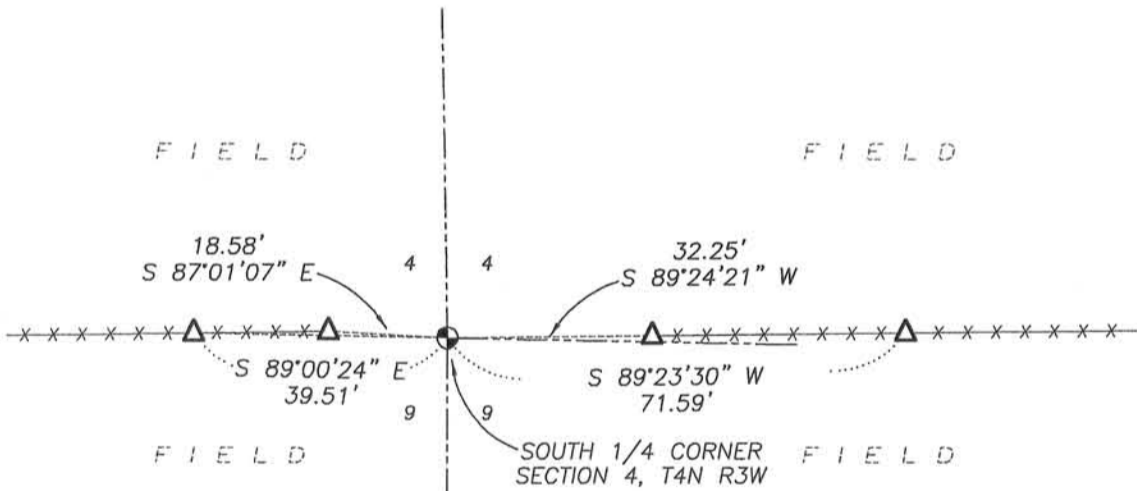
- 1833-Robert Clark set original corner.
- 1844-Samuel Wiltse shown the corner on a survey (Book A, Page 236)
- 1876-Joel Barber tied to this corner on a survey (Book D, Page 2)
- 1996 Michael LaRosa prepared a Survey Monument Record in conjunction with a survey (Book W, Page 93)
- 1997-Michael LaRosa tied to this corner on a survey (Book Y, Page 29)
- 2000-Bruce Bowden tied to this corner on a survey. (Book 7, Page 31)
- 2006-Larry Austin tied to this corner on C.S.M. No. 1252.
- 2011-Aaron Austin tied to this corner on C.S.M. No. 1606.
- 2012-Jim Rose shown the corner as reset on a ALTA/ACSM Survey. (Book 32, Page 45)
- 2012-Jim Rose shown the corner as reset on a ALTA/ACSM Survey. (Book 32, Page 64)

DESCRIPTION OF CORNER EVIDENCE FOUND:

I found a disturbed No. 7 rebar with cap as shown on the above mentioned on surveys by Jim Rose. It appears that recent tillage and/or excavation in the immediate area of this corner disturbed this monument. I found all four ties in place as set by Michael LaRosa. I reset the corner based upon these ties and verified it's location with the measurements to the North 1/4 corner and East 1/4 corner of Section 4 (C.S.M. No. 1606). This location was established by G.P.S. methods.

DESCRIPTION OF CORNER AND WITNESS MONUMENTS, references and accessories used to perpetuate the original or re-established location of this corner. Witnesses to corner location Shane Austin.

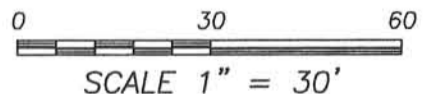
SKETCH:



LEGEND

- No. 8 x 30" rebar set with Grant County Aluminum Cap
- △ 1/2" Iron pipe found
- x-x- Approximate existing fence

Bearings are referenced to the Grant County Coordinate System (2011 adjustment) which was determined by G.P.S. observation.



Austin Engineering LLC
 austinengineeringllc.com

4211 HWY 81 E, LANCASTER, WI 53813
 PHONE: 608-723-6363 FAX: 608-723-6702

JOB NO: 13s095
 G:\HMP\T4NR3W\04
 H:\TIE\T4NR3W\28

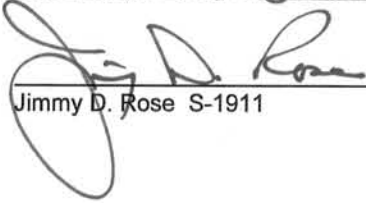
FIELDBOOK: TDSR
 DRAWN BY: AJ AUSTIN
 CREW: SW AUSTIN

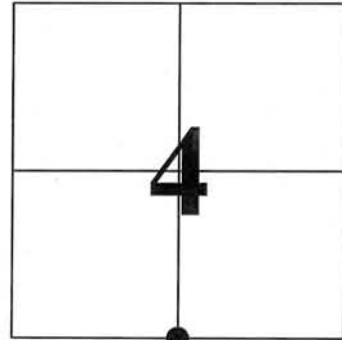
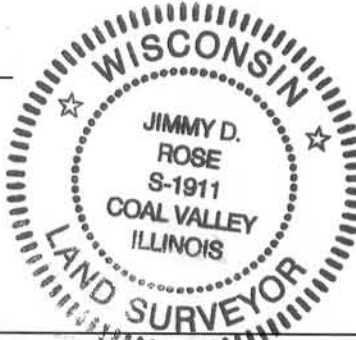
U.S. PUBLIC LAND SURVEY MONUMENT RECORD - GRANT COUNTY, WI
 Section 4, Town 4 North Range 3 West, Town of South Lancaster

CERTIFICATE:

I, Jimmy D. Rose, do hereby certify that the corner location on this record was determined by me and/or under my direct supervision and that this U.S. Public Land Survey Monument Record is correct and complete to the best of my knowledge and belief.

Dated this 11th day of December, 2012.


 Jimmy D. Rose S-1911



● = CORNER LOCATION



HISTORY OF CORNER ESTABLISHMENT: CORNER LOCATION AND ACCESSORIES PREVIOUSLY ESTABLISHED BY MICHAEL LAROSA IN 1996.

DESCRIPTION OF CORNER EVIDENCE FOUND: FOUND THREE OF THE CORNER ACCESSORIES UNABLE TO FIND REMNANTS OF ANGLE IRON CORNER POST. SET MONUMENT AS SHOWN AND ADDED ADDITIONAL CORNER ACCESSORY.

DESCRIPTION OF CORNER AND WITNESS MONUMENTS, references and accessories used to perpetuate the original or re-established location of this corner.

SKETCH:

ANGLE IRON CORNER POST WAS OBLITERATED. NEW MONUMENT SET IN IT'S PLACE

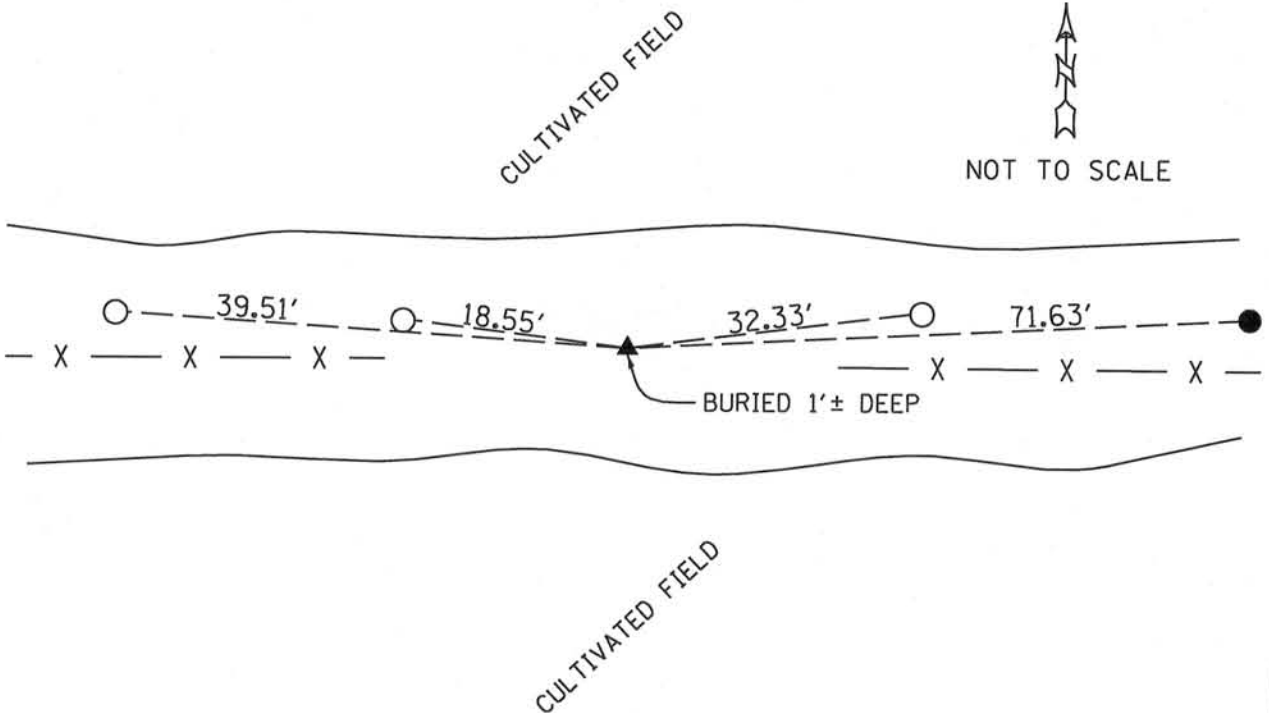
LEGEND

- ▲ SET 1" DIA. REBAR W/ GRANT COUNTY MONUMENT CAP
- SET 5/8" DIA. REBAR
- FOUND 1/2" DIA. REBAR

-X-X- FENCE



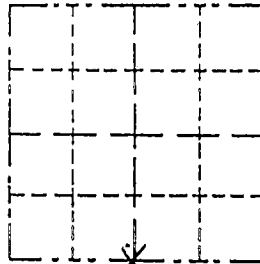
NOT TO SCALE



Survey Monument Record

CORNER NO. _____
 SECTION 4
 TOWN 4N
 RANGE 3W

TYPE OF MONUMENT Angle Iron Post
 STATE PLANE COORDINATES: N _____
 E _____
 ELEVATION — M.S.L. DATUM: _____
 THETA ANGLE: _____
 FIELD BOOK: 96-2
 PAGE _____



LOCATION
 (Indicated by "X")

- FOUND PERPETUATED LOCATION
- OBLITERATED EVIDENCE LOCATION
- LOST CORNER (RESTORED BY PROPORTIONATE METHODS)

BASIS FOR MONUMENT LOCATION

(Use reverse side if necessary)

Show info such as: History of corner, with reference to Vol. and pg., dates, surveyor; exact description of monument replaced; if location computed, by taped or EDM traverse; landowner, remarks, etc.

This corner was noted in a survey by David Davis dated 3/6/1979. The corner location was intended to have been computed 3.5' south of a control point this distance north of the existing fence line. The wrong bearing was used hence the corner location shown does not fit the physical evidence in the area. The angle iron corner post was accepted as it fell on line with evidence to the north, west and east and at the appropriate distance from the SW corner.

CERTIFIED CORRECT TO THE BEST OF MY KNOWLEDGE AND BELIEF

Michael R. LaRosa
 Registered Land Surveyor

DATE: 4/18/1996

TIE SKETCH

Show at least (4) ties and monuments

