

## GRANT COUNTY U.S. PUBLIC LAND SURVEY MONUMENT RECORD

INSTRUCTIONS: THIS RECORD SHALL SHOW THE LOCATION OF THE CORNER AND SHALL INCLUDE ALL OF THE FOLLOWING ELEMENTS (A THROUGH I).

(A) IDENTIFY THE CORNER AS REFERENCED TO THE U.S. PUBLIC LAND SURVEY SYSTEM

■ = CORNER MONUMENT RESTORED

WITNESSES TO CORNER LOCATION:

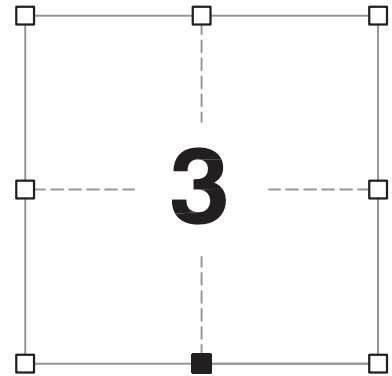
**JAY P. ADAMS**  
**TYLER D. ATKINSON**

GEOGRAPHIC COORDINATES,  
NAD 83 (2011) ADJUSTMENT:

**LATITUDE:** 42° 50' 33.19245"  
**LONGITUDE:** 90° 42' 50.70510"

WISCONSIN COORDINATE REFERENCE SYSTEM (WISCRS),  
GRANT COUNTY, NAD 83 (2011) ADJUSTMENT:

**NORTHING:** 521,677.71  
**EASTING:** 818,043.65



**SECTION 3**  
**TOWNSHIP 4 NORTH, RANGE 3 WEST**  
**CITY OF LANCASTER**

(B) DESCRIBE ANY RECORD EVIDENCE, MONUMENT EVIDENCE, OCCUPATIONAL EVIDENCE, TESTIMONIAL EVIDENCE OR ANY OTHER MATERIAL EVIDENCE YOU CONSIDERED, AND WHETHER THE MONUMENT WAS FOUND OR PLACED.

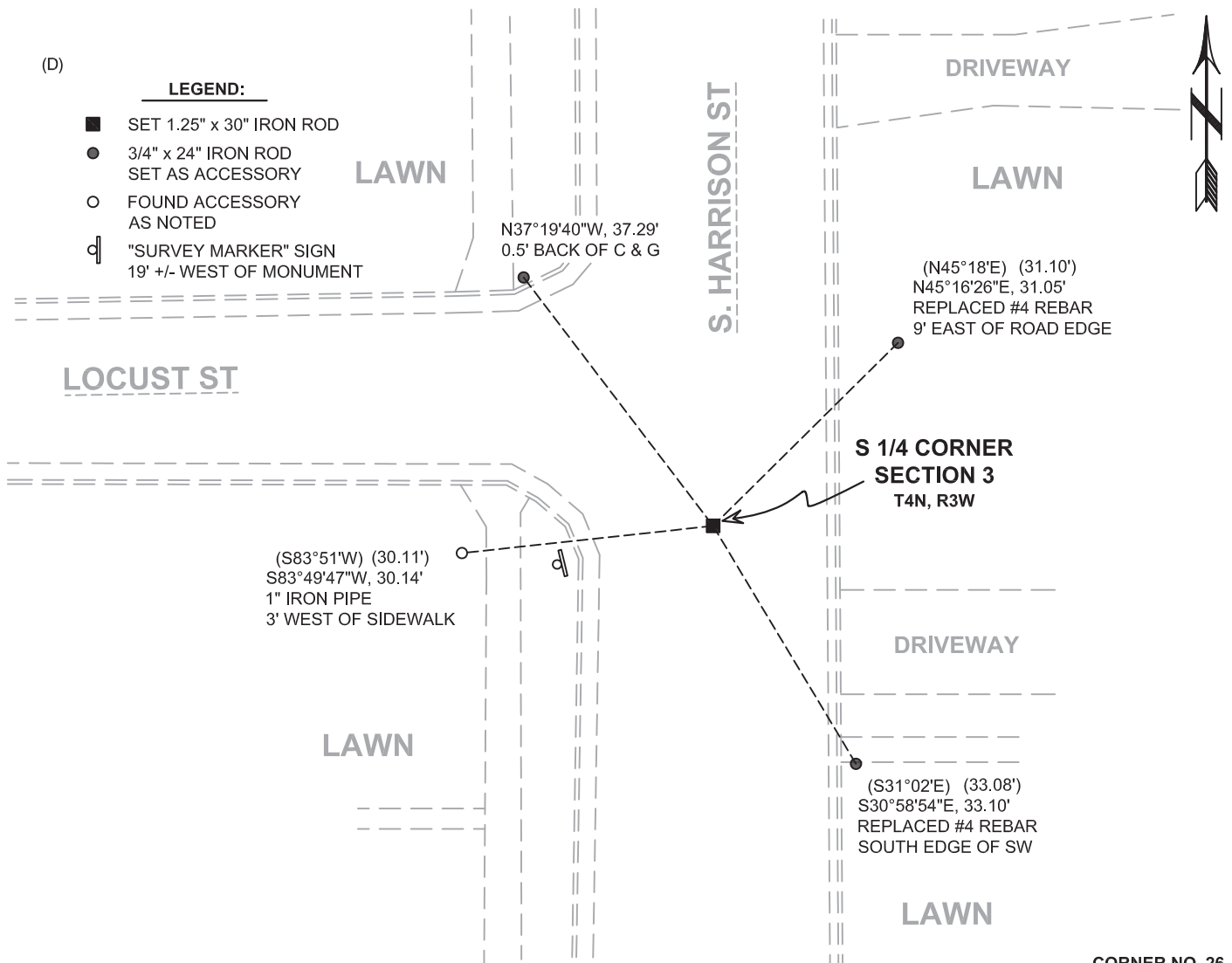
**I RECOVERED THE RAILROAD SPIKE SET BY BRUCE BOWDEN AND THREE OF AUSTIN'S TIES. I ACCEPTED THIS LOCATION AS THE BEST AVAILABLE EVIDENCE OF THE CORNER AND REMONUMENTED IT WITH A 1.25" x 30" IRON ROD AS DEPICTED HEREON.**

(C) IN THE PLAN VIEW DRAWING BELOW, PROVIDE REFERENCE TIES TO AT LEAST 4 WITNESS MONUMENTS. WITNESS MONUMENTS SHALL BE MADE OF CONCRETE, NATURAL STONE, IRON, BEARING TREES OR ANY OTHER EQUALLY DURABLE MATERIAL. DEPICT THE RELEVANT MONUMENTS AND REFERENCE TIES WITH SUFFICIENT DETAIL TO ENABLE ACCURATE RELOCATION OF THE CORNER IF THE CORNER MONUMENT IS DISTURBED.

(D)

**LEGEND:**

- SET 1.25" x 30" IRON ROD
- 3/4" x 24" IRON ROD SET AS ACCESSORY
- FOUND ACCESSORY AS NOTED
- d "SURVEY MARKER" SIGN 19' +/- WEST OF MONUMENT



# Remonumentation

(E) DESCRIBE ANY MATERIAL DISCREPANCY BETWEEN THE LOCATION OF THE CORNER AS RESTORED OR REESTABLISHED AND THE LOCATION OF THAT CORNER AS PREVIOUSLY RESTORED OR REESTABLISHED BY DISTANCE AND DIRECTION. SHOW THE DISCREPANCY ON THE PLAN VIEW DRAWING UNDER (D), ABOVE. SHOW THE DISTANCES BETWEEN THE CORNER AS PREVIOUSLY RESTORED OR REESTABLISHED AND (1) THE CORNER AS RESTORED OR REESTABLISHED, AND (2) TO AT LEAST 2 OF THE WITNESS MONUMENTS SHOWN ON THE DRAWING IN (D) ABOVE.

N/A

(F) WAS THE CORNER RESTORED THROUGH ACCEPTANCE OF (1) AN OBLITERATED EVIDENCE LOCATION, OR (2) A FOUND PERPETUATED LOCATION?

(2) A FOUND PERPETUATED LOCATION.

(G&H) WAS THE CORNER REESTABLISHED THROUGH LOST CORNER PROPORTIONATE METHODS? IF SO, SHOW THE METHOD, INCLUDING THE DIRECTIONS AND DISTANCES TO OTHER PUBLIC LAND SURVEY CORNERS USED AS EVIDENCE OR USED FOR PROPORTIONING IN DETERMINING THE CORNER LOCATION.

N/A

## CORNER HISTORY

THE ORIGINAL GOVERNMENT CORNER WAS ESTABLISHED BY ROBERT CLARK JR. IN THE FIRST QUARTER OF 1833.

THE FIRST TIE SHEET THAT REFERENCES THIS CORNER WAS MADE BY LARRY AUSTIN WHERE HE SET A #8 x 30" REBAR WITH A GRANT COUNTY ALUMINUM CAP AFTER RETRACING MANY AREA SURVEYS.

IN A TIE SHEET DATED 13 OCTOBER 2013, BRUCE BOWDEN FOUND ALL FOUR OF AUSTIN'S TIES AND PLACED A RAILROAD SPIKE IN PLACE OF THE PK NAIL WHICH HAD APPARENTLY BEEN DESTROYED BY ROAD CONSTRUCTION.

(I) I, JAY P. ADAMS, P.L.S. - 2879, CERTIFY THAT THE CORNER LOCATION SHOWN ON THIS RECORD WAS DETERMINED BY ME OR UNDER MY DIRECTION AND CONTROL AND THAT THIS U.S. PUBLIC LAND SURVEY MONUMENT RECORD IS CORRECT AND COMPLETE TO THE BEST OF MY KNOWLEDGE AND BELIEF.

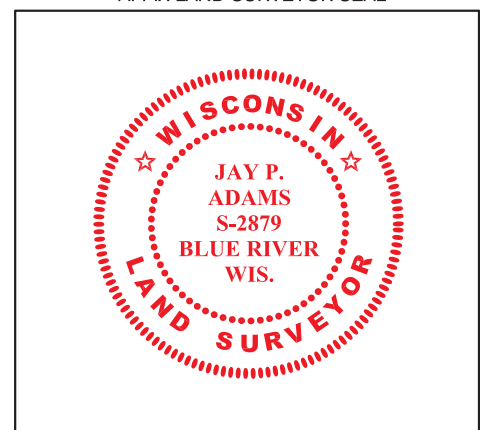


SIGNATURE

3 JANUARY 2019

DATE

AFFIX LAND SURVEYOR SEAL



# U. S. PUBLIC LAND SURVEY MONUMENT RECORD

### INSTRUCTIONS:

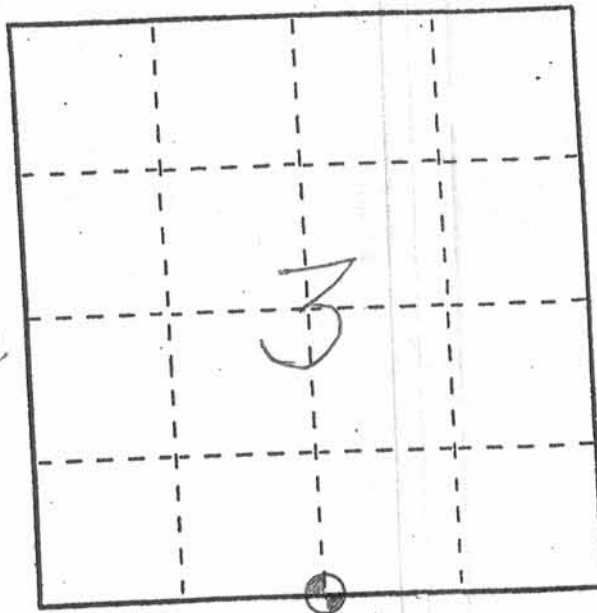
This record shall show the location of the corner and shall include all of the following nine elements (a through i).

- (a) Identify the corner by reference to the U.S. public land survey system.
- ⑦. Corner monument restored.

SOUTH 1/4 CORNER OF  
SECTION 3, TOWN 4  
NORTH, RANGE 3 WEST,  
CITY OF LANCASTER,  
GRANT COUNTY, WISC.

WGS 1984 (2011) USING GEOID 09  
WISCONS

N 521677.69  
E 818043.64  
1078.45



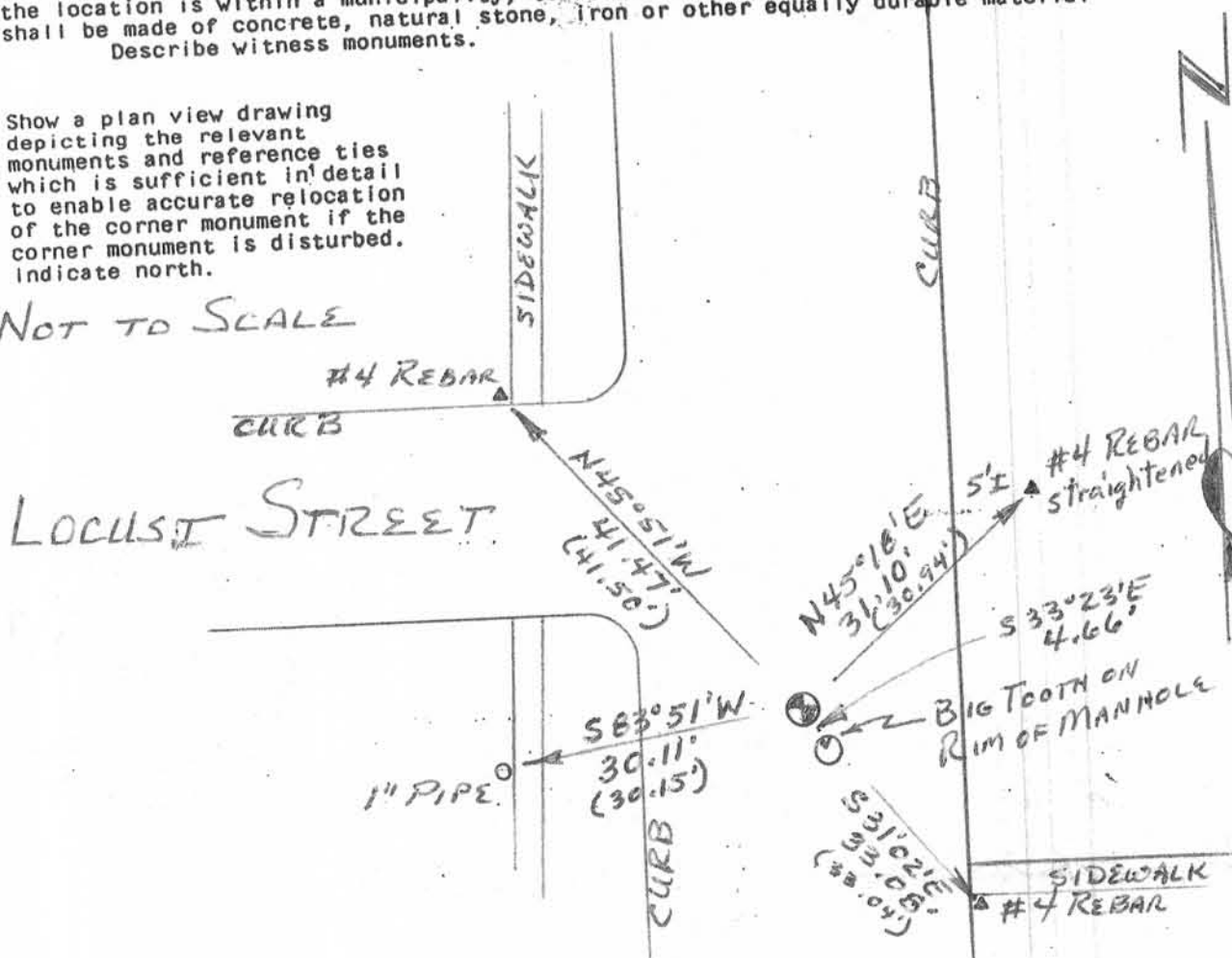
- (b) Describe any record evidence, monument evidence, occupational evidence, testimonial evidence or any other material evidence you considered, and whether the monument was found or placed.

FOUND & VERIFIED AND ACCEPTED THE FOUR TIES FROM THE TIE SHEET BY LARRY AUSTIN DATED FEB 21, 2008. MONUMENT WAS REMOVED DURING APPARENT SEWER CONSTRUCTION. RAILROAD SPIKE WAS SET IN VERY HARD ASPHALT PAVING.

- (c) In the plan view drawing below, provide reference ties to at least 4 witness monuments, or, if the location is within a municipality, to at least 2 witness monuments. (Witness monuments shall be made of concrete, natural stone, iron or other equally durable material. Describe witness monuments.)

- (d) Show a plan view drawing depicting the relevant monuments and reference ties which is sufficient in detail to enable accurate relocation of the corner monument if the corner monument is disturbed. Indicate north.

NOT TO SCALE



(e) Describe any material discrepancy between the location of the corner as restored or reestablished and the location of that corner as previously restored or reestablished by distance and direction. Show the discrepancy on the plan view drawing under (d), above. Show the distances between the corner as previously restored or reestablished and (1) the corner as restored or reestablished, and (2) to at least 2 of the witness monuments shown on the drawing in (d), above.

NONE

(f) Was the corner restored through acceptance of (1) an obliterated evidence location, or, (2) a found perpetuated location?

(2) A FOUND PERPETUATED LOCATION

(g&h) Was the corner reestablished through lost corner proportionate methods? If so, show the method, including the directions and distances to other public land survey corners used as evidence or used for proportioning in determining the corner location?

No

Affix Land Surveyor Seal



(i) I, BRUCE D. BOWDEN,  
(type or print name) certify that the corner location shown on this record was determined by me or under my direction and control and that this U.S. Public Land Survey Monument Record is correct and complete to the best of my knowledge and belief.

Bruce D. Bowden OCT 13, 2013  
Signature Date

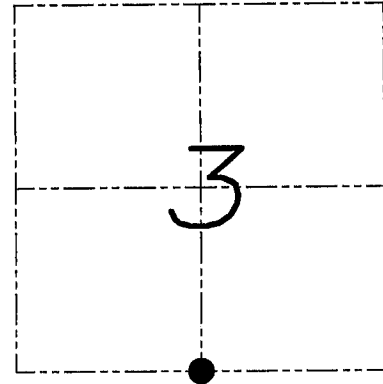
# U.S. PUBLIC LAND SURVEY MONUMENT RECORD

Section 3, Town 4 North Range 3 West, Town of South Lancaster, Grant County, Wisconsin

## CERTIFICATE

I, Larry L. Austin, do hereby certify that the corner location on this record was determined by me and/or under my direct supervision and that this U.S. public land survey monument record is correct and complete to the best of my knowledge and belief.

*Larry L. Austin*  
Larry L. Austin, S-1903



● = CORNER LOCATION

## HISTORY OF CORNER

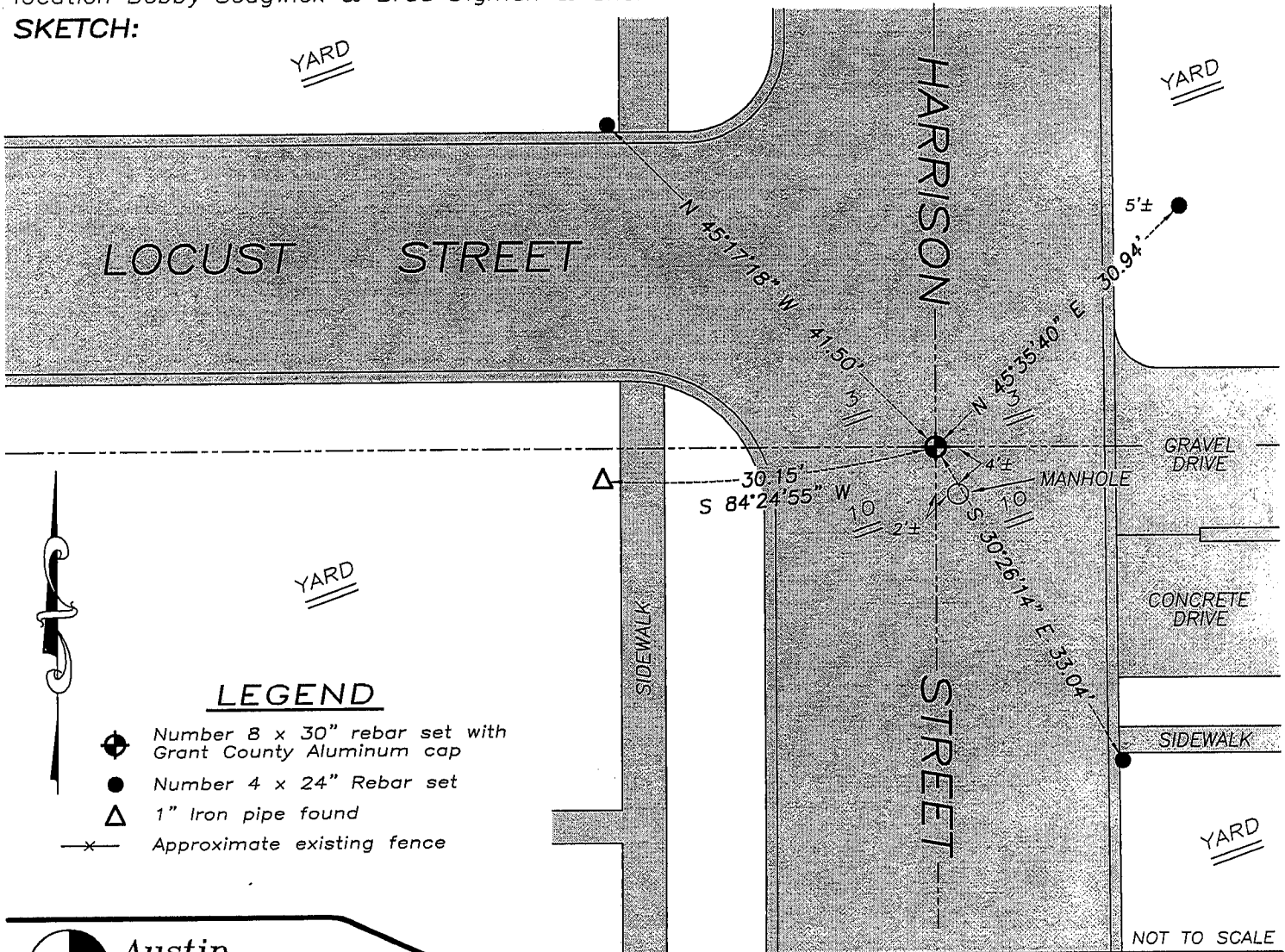
Corner was originally set in 1832 by Clark. Many surveys have tied to the corner. No tiesheet was ever filed.

## CORNER EVIDENCE FOUND

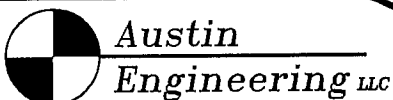
I set and tied the corner based on all local surveys in the area. Verified this location using EDM & GPS methods.

**DESCRIPTION OF CORNER AND WITNESS MONUMENTS,** references and accessories used to perpetuate the original or re-established location of this corner. Witnesses to monument location Bobby Sedgwick & Brad Digman & Shane Austin

## SKETCH:



NOT TO SCALE



4211 HWY 81 E, LANCASTER, WI 53813  
PHONE 608-723-6363 FAX 608-723-6702

JOB NUMBER 07S241  
FIELDBOOK: TDSR, 2030  
G:\LANCASTER\BLK22  
H:\TIE\T4NR3W\26

DRAWN BY: SW AUSTIN  
APPROVED: LL AUSTIN