

GRANT COUNTY U.S. PUBLIC LAND SURVEY MONUMENT RECORD

INSTRUCTIONS: THIS RECORD SHALL SHOW THE LOCATION OF THE CORNER AND SHALL INCLUDE ALL OF THE FOLLOWING ELEMENTS (A THROUGH I).

(A) IDENTIFY THE CORNER AS REFERENCED TO THE U.S. PUBLIC LAND SURVEY SYSTEM

■ = CORNER MONUMENT RESTORED

WITNESSES TO CORNER LOCATION:

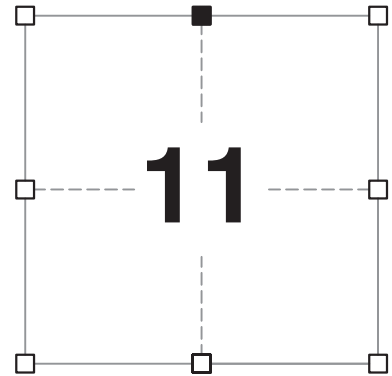
JAY P. ADAMS
PAIGE O. JELINEK

GEOGRAPHIC COORDINATES,
NAD 83 (2011) ADJUSTMENT:

LATITUDE: 42° 50' 33.00048"
LONGITUDE: 90° 41' 39.46681"

WISCONSIN COORDINATE REFERENCE SYSTEM (WISCRS),
GRANT COUNTY, NAD 83 (2011) ADJUSTMENT:

NORTHING: 521,664.31
EASTING: 823,351.20



SECTION 11
TOWNSHIP 4 NORTH, RANGE 3 WEST
CITY OF LANCASTER

(B) DESCRIBE ANY RECORD EVIDENCE, MONUMENT EVIDENCE, OCCUPATIONAL EVIDENCE, TESTIMONIAL EVIDENCE OR ANY OTHER MATERIAL EVIDENCE YOU CONSIDERED, AND WHETHER THE MONUMENT WAS FOUND OR PLACED.

I COULD FIND NO MONUMENTS OR BEARING TREES FROM THE ORIGINAL GOVERNMENT SURVEY OR THE HISTORIC COUNTY SURVEYOR'S SUBSEQUENT RESURVEY. THE PK NAIL SET BY WOOD IS NO LONGER IN THE ROADWAY SURFACE AND ONLY TWO EXISTING TIES WERE RECOVERED. I REMONUMENTED THIS CORNER BY UTILIZING EXISTING TIES AS WELL AS RECORDED SURVEY INFORMATION ALONG THE NORTH LINE OF SECTION 11. I SET A 1.25" x 30" IRON ROD AT THIS LOCATION.

NOTE: JOEL ALLEN BARBER'S FAMILY GRAVESTONE OVERLOOKS THIS CORNER AND HAS BEEN USED AS A TIE TO THE CORNER. BARBER WAS AN ATTORNEY WHO SERVED MANY COUNTY GOVERNMENT CAPACITIES INCLUDING COUNTY SURVEYOR IN THE 1800s. HE ALSO SERVED IN STATE AND FEDERAL GOVERNMENT AND WAS A PROMINENT MEMBER OF THE COMMUNITY.

(C) IN THE PLAN VIEW DRAWING BELOW, PROVIDE REFERENCE TIES TO AT LEAST 4 WITNESS MONUMENTS. WITNESS MONUMENTS SHALL BE MADE OF CONCRETE, NATURAL STONE, IRON, BEARING TREES OR ANY OTHER EQUALLY DURABLE MATERIAL. DEPICT THE RELEVANT MONUMENTS AND REFERENCE TIES WITH SUFFICIENT DETAIL TO ENABLE ACCURATE RELOCATION OF THE CORNER IF THE CORNER MONUMENT IS DISTURBED.

(D)

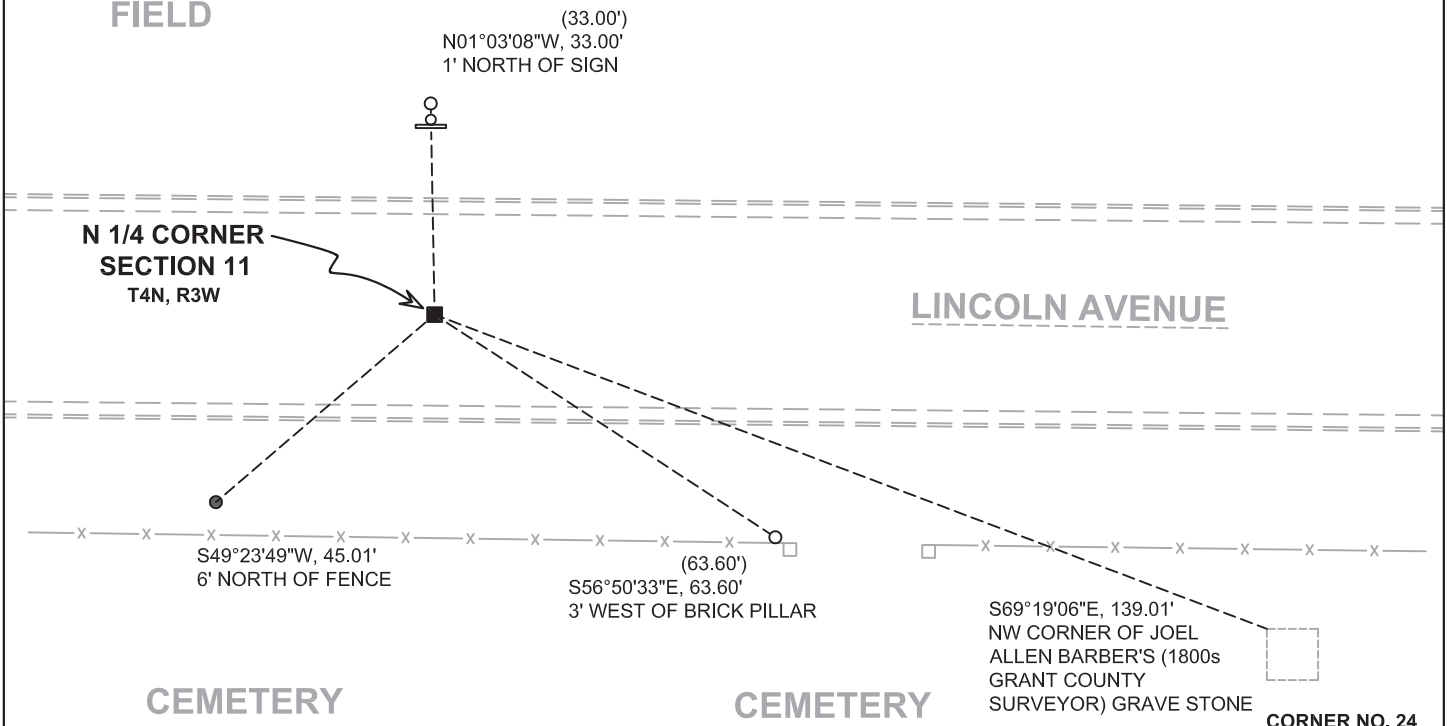
LEGEND:

- SET 1 1/4" x 30" IRON ROD
- 3/4" x 24" IRON ROD SET AS ACCESSORY
- 3/4" IRON ROD FOUND AS ACCESSORY
- ⊞ "SURVEY MARKER" SIGN 32' +/- NORTH OF MONUMENT



FIELD

FIELD



Remonumentation

(E) DESCRIBE ANY MATERIAL DISCREPANCY BETWEEN THE LOCATION OF THE CORNER AS RESTORED OR REESTABLISHED AND THE LOCATION OF THAT CORNER AS PREVIOUSLY RESTORED OR REESTABLISHED BY DISTANCE AND DIRECTION. SHOW THE DISCREPANCY ON THE PLAN VIEW DRAWING UNDER (D), ABOVE. SHOW THE DISTANCES BETWEEN THE CORNER AS PREVIOUSLY RESTORED OR REESTABLISHED AND (1) THE CORNER AS RESTORED OR REESTABLISHED, AND (2) TO AT LEAST 2 OF THE WITNESS MONUMENTS SHOWN ON THE DRAWING IN (D) ABOVE.

N/A

(F) WAS THE CORNER RESTORED THROUGH ACCEPTANCE OF (1) AN OBLITERATED EVIDENCE LOCATION, OR (2) A FOUND PERPETUATED LOCATION?

(2) A FOUND PERPETUATED LOCATION.

(G&H) WAS THE CORNER REESTABLISHED THROUGH LOST CORNER PROPORTIONATE METHODS? IF SO, SHOW THE METHOD, INCLUDING THE DIRECTIONS AND DISTANCES TO OTHER PUBLIC LAND SURVEY CORNERS USED AS EVIDENCE OR USED FOR PROPORTIONING IN DETERMINING THE CORNER LOCATION.

N/A

CORNER HISTORY

THE ORIGINAL GOVERNMENT CORNER WAS ESTABLISHED BY ROBERT CLARK JR. IN THE FIRST QUARTER OF 1833.

IN A SURVEY DATED 7 SEPTEMBER 1849, GEO. STUNTZ WAS AT THE CORNER.

IN A SURVEY DATED 6 APRIL 1971, HOMER RALPH WAS AT THE CORNER WITH NO MENTION OF A MONUMENT.

IN SURVEYS DATED 16 DECEMBER 1981 AND 8 OCTOBER 1982, JOHN HALVERSON FOUND A 1" IRON PIPE.


IN A TIE SHEET DATED 9 MARCH 1988, TIMOTHY MOORE ACCEPTED THE 1" IRON PIPE REFERENCED BY HALVERSON AND REPLACED IT WITH A BERNTSEN A-1 ALUMINUM MONUMENT.

IN A TIE SHEET DATED 8 AUGUST 2006, PETER WOOD FOUND THREE OF MOORE'S TIES AND THE BERNTSEN MONUMENT. FOLLOWING A SEWER CONSTRUCTION PROJECT THAT DESTROYED THE ALUMINUM MONUMENT, WOOD PLACED A PK NAIL IN LINCOLN AVENUE IN PLACE OF THE DESTROYED ALUMINUM MONUMENT.

THE PK NAIL HAS SINCE BEEN USED IN A NUMBER OF AREA SURVEYS.



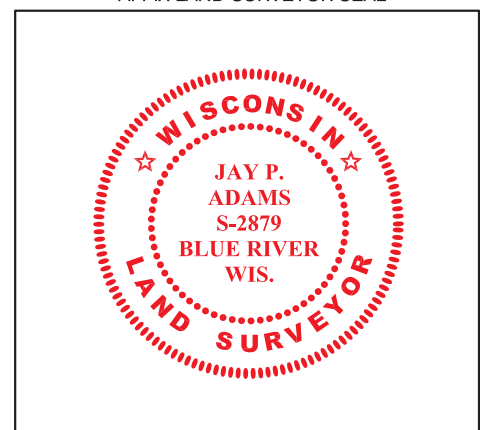
(I) I, JAY P. ADAMS, P.L.S. - 2879, CERTIFY THAT THE CORNER LOCATION SHOWN ON THIS RECORD WAS DETERMINED BY ME OR UNDER MY DIRECTION AND CONTROL AND THAT THIS U.S. PUBLIC LAND SURVEY MONUMENT RECORD IS CORRECT AND COMPLETE TO THE BEST OF MY KNOWLEDGE AND BELIEF.


SIGNATURE

3 JANUARY 2019

DATE

AFFIX LAND SURVEYOR SEAL

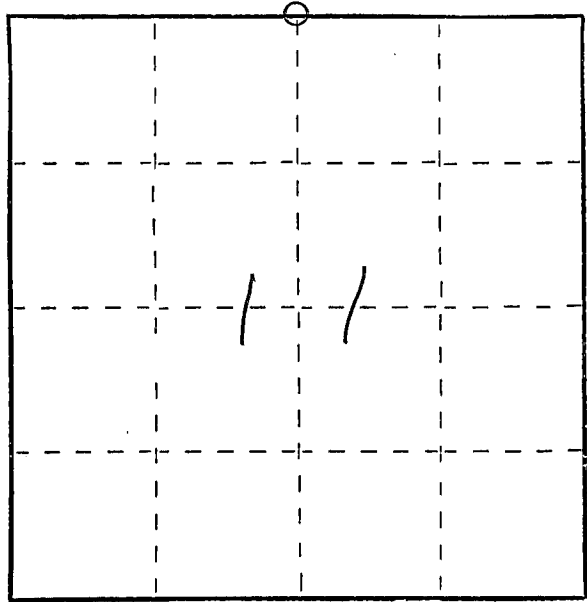


U. S. PUBLIC LAND SURVEY MONUMENT RECORD

INSTRUCTIONS: This record shall show the location of the corner and shall include all of the following nine elements (a through i).

- (a) Identify the corner by reference to the U.S. public land survey system.
 ○ = Corner monument restored.

N 1/4 CORNER Sec 11,
 T 4 N, R 3 W,
 T.S. LANCASTER, CITY OF LANCASTER
 GRANT CO., WI

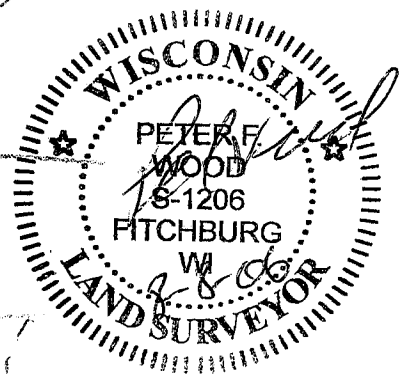
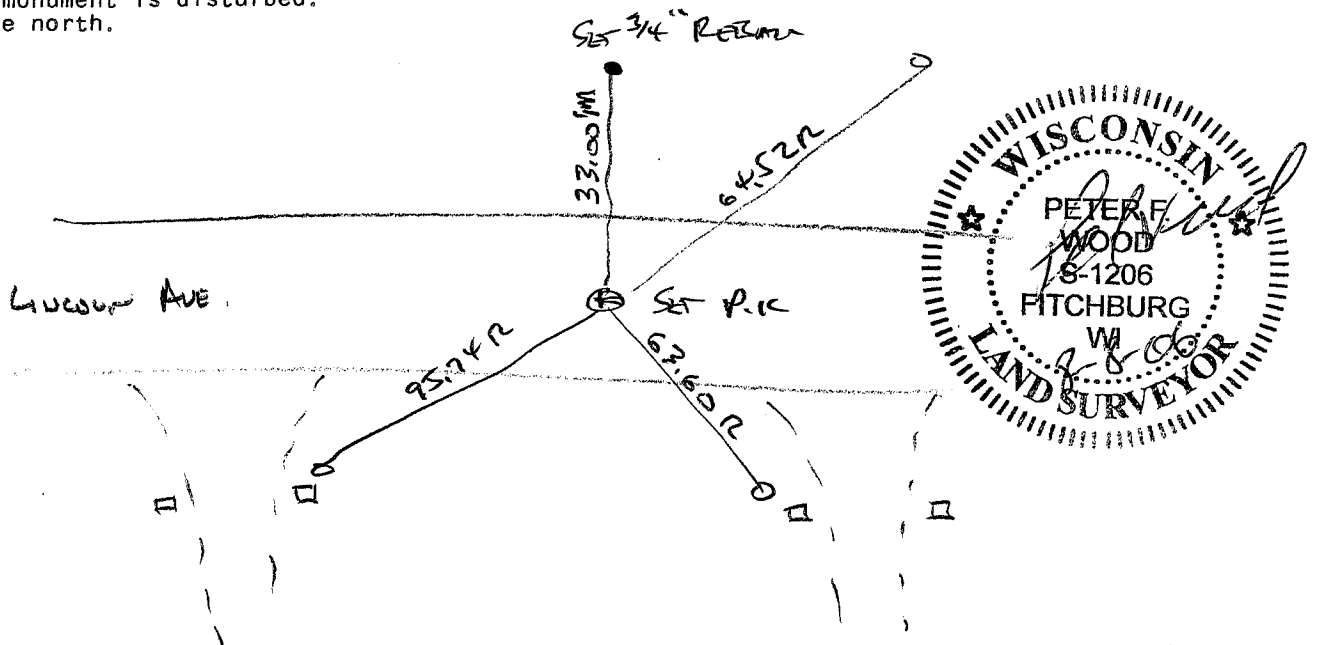


- (b) Describe any record evidence, monument evidence, occupational evidence, testimonial evidence or any other material evidence you considered, and whether the monument was found or placed.

BENSON MONUMENT FOUND 1-25-06 WAS TIED TO GPS SURVEY
 CORNER WAS DESTROYED BY SEWER CONSTRUCTION, ALL
 TIES APPEAR INTACT
 SET PILE AT CORNER 8-1-06

- (c) In the plan view drawing below, provide reference ties to at least 4 witness monuments, or, if the location is within a municipality, to at least 2 witness monuments. (Witness monuments shall be made of concrete, natural stone, iron or other equally durable material.)
 Describe witness monuments.

- (d) Show a plan view drawing depicting the relevant monuments and reference ties which is sufficient in detail to enable accurate relocation of the corner monument if the corner monument is disturbed. Indicate north.



(e) Describe any material discrepancy between the location of the corner as restored or reestablished and the location of that corner as previously restored or reestablished by distance and direction. Show the discrepancy on the plan view drawing under (d), above. Show the distances between the corner as previously restored or reestablished and (1) the corner as restored or reestablished, and (2) to at least 2 of the witness monuments shown on the drawing in (d), above.

(f) Was the corner restored through acceptance of (1) an obliterated evidence location, or, (2) a found perpetuated location?

(g&h) Was the corner reestablished through lost corner proportionate methods? If so, show the method, including the directions and distances to other public land survey corners used as evidence or used for proportioning in determining the corner location?

Affix Land Surveyor Seal

(i) I, _____
(type or print name) certify that the corner location shown on this record was determined by me or under my direction and control and that this U.S. Public Land Survey Monument Record is correct and complete to the best of my knowledge and belief.

Signature

Date

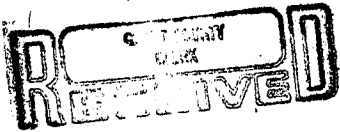
U. S. PUBLIC LAND SURVEY MONUMENT RECORD

INSTRUCTIONS: This record shall show the location of the corner and shall include all of the following nine elements (a through i).

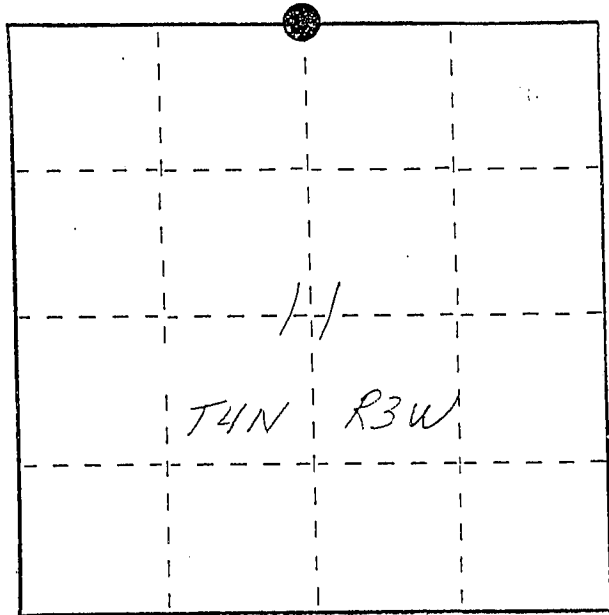
(a) Identify the corner by reference to the U.S. public land survey system.

● = Corner monument restored.

N¹/₄ corner section 11
 T4N R3W of the
 4th P.M.
 Town of South Lancaster
 Grant County, Wisconsin.



APR 27 1988

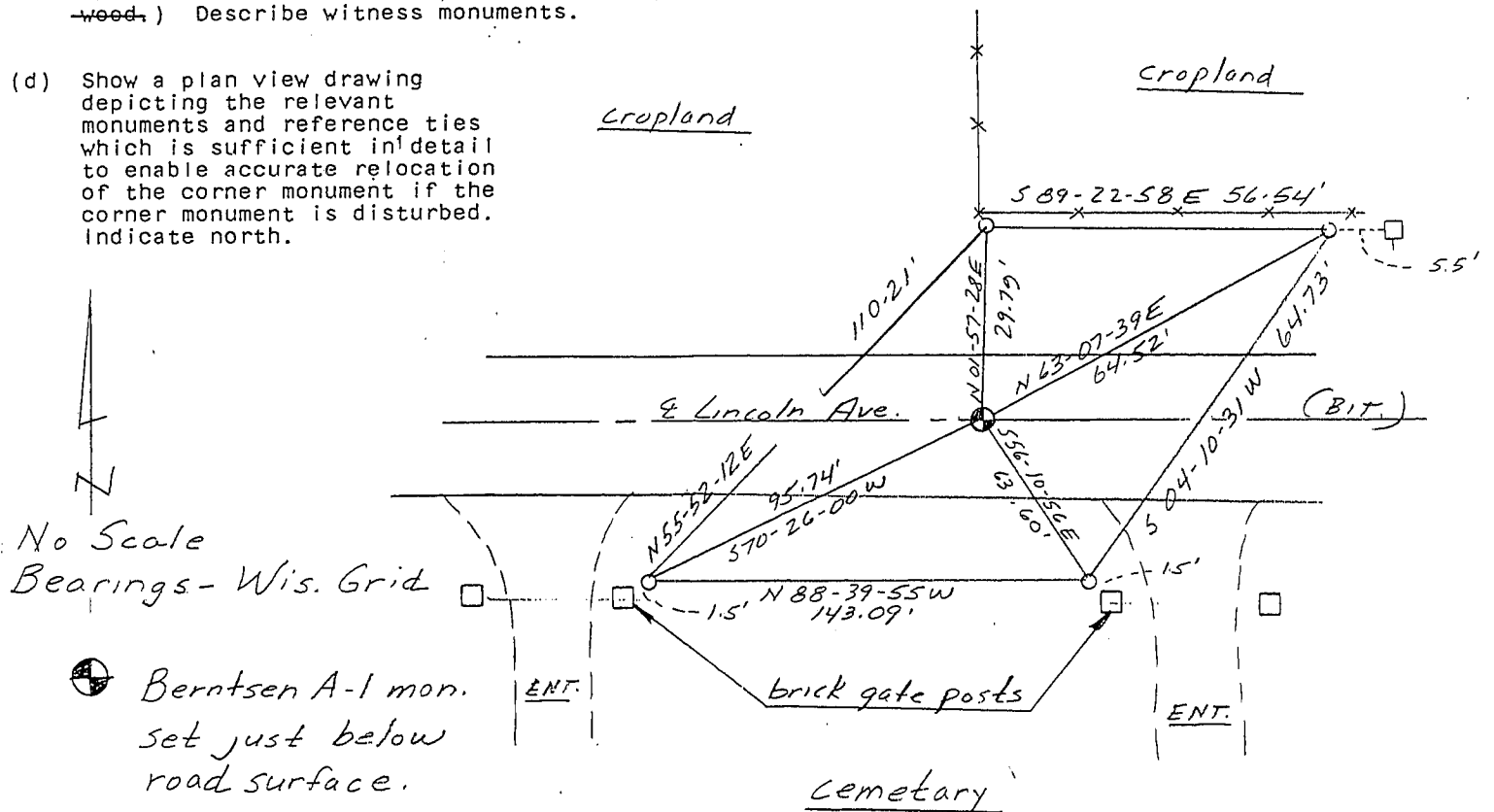


(b) Describe any record evidence, monument evidence, occupational evidence, testimonial evidence or any other material evidence you considered, and whether the monument was found or placed.

Accepted 1" iron pipe referred to in 1981 and 1982 surveys by John M. Halverson. Location fits occupation lines and fits well with other reestablished corners in section 11. Replaced 1" iron with a Berntsen mon.

(c) In the plan view drawing below, provide reference ties to at least 4 witness monuments, or, if the location is within a municipality, to at least 2 witness monuments. (Witness monuments shall be made of concrete, natural stone, iron or other equally durable material, ~~except wood.~~) Describe witness monuments.

(d) Show a plan view drawing depicting the relevant monuments and reference ties which is sufficient in detail to enable accurate relocation of the corner monument if the corner monument is disturbed. Indicate north.



No Scale

Bearings - Wis. Grid

● Berntsen A-1 mon.
 set just below
 road surface.

○ Ref. mon. - 3/4" x 24"
 rebar w/cap.

(e) Describe any material discrepancy between the location of the corner as restored or reestablished and the location of that corner as previously restored or reestablished by distance and direction. Show the discrepancy on the plan view drawing under (d), above. Show the distances between the corner as previously restored or reestablished and (1) the corner as restored or reestablished, and (2) to at least 2 of the witness monuments shown on the drawing in (d), above.

(f) Was the corner restored through acceptance of (1) an obliterated evidence location, or, (2) a found perpetuated location?

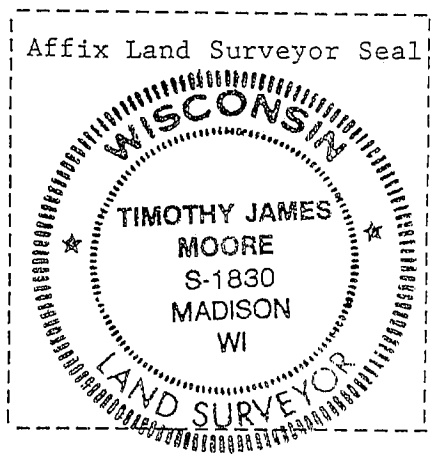
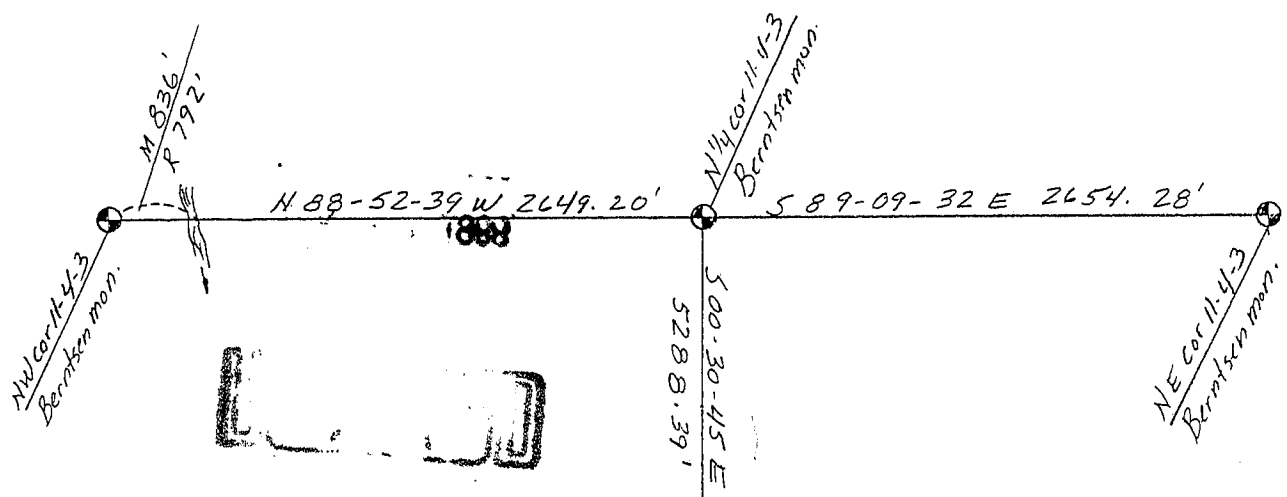
Accepted 1" iron pipe found by John M. Halverson & shown on his 1981 and 1982 surveys.

(g&h) Was the corner reestablished through lost corner proportionate methods? If so, show the method, including the directions and distances to other public land survey corners used as evidence or used for proportioning in determining the corner location?



No Scale
Bearings - Wis. Grid

SEC. 2



(i) I, Timothy J. Moore
(type or print name) certify that the corner location shown on this record was determined by me or under my direction and control and that this U.S. Public Land Survey Monument Record is correct and complete to the best of my knowledge and belief.

Timothy J. Moore 3-9-88
Signature Date