

GRANT COUNTY U.S. PUBLIC LAND SURVEY MONUMENT RECORD

INSTRUCTIONS: THIS RECORD SHALL SHOW THE LOCATION OF THE CORNER AND SHALL INCLUDE ALL OF THE FOLLOWING ELEMENTS (A THROUGH I).

(A) IDENTIFY THE CORNER AS REFERENCED TO THE U.S. PUBLIC LAND SURVEY SYSTEM

■ = CORNER MONUMENT RESTORED

WITNESSES TO CORNER LOCATION:

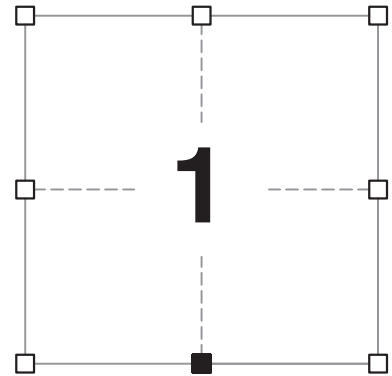
JAY P. ADAMS
PAIGE O. JELINEK

GEOGRAPHIC COORDINATES,
NAD 83 (2011) ADJUSTMENT:

LATITUDE: 42° 50' 33.39364"
LONGITUDE: 90° 40' 28.01646"

WISCONSIN COORDINATE REFERENCE SYSTEM (WISCRS),
GRANT COUNTY, NAD 83 (2011) ADJUSTMENT:

NORTHING: 521,711.42
EASTING: 828,674.47



SECTION 1
TOWNSHIP 4 NORTH, RANGE 3 WEST
TOWN OF SOUTH LANCASTER

(B) DESCRIBE ANY RECORD EVIDENCE, MONUMENT EVIDENCE, OCCUPATIONAL EVIDENCE, TESTIMONIAL EVIDENCE OR ANY OTHER MATERIAL EVIDENCE YOU CONSIDERED, AND WHETHER THE MONUMENT WAS FOUND OR PLACED.

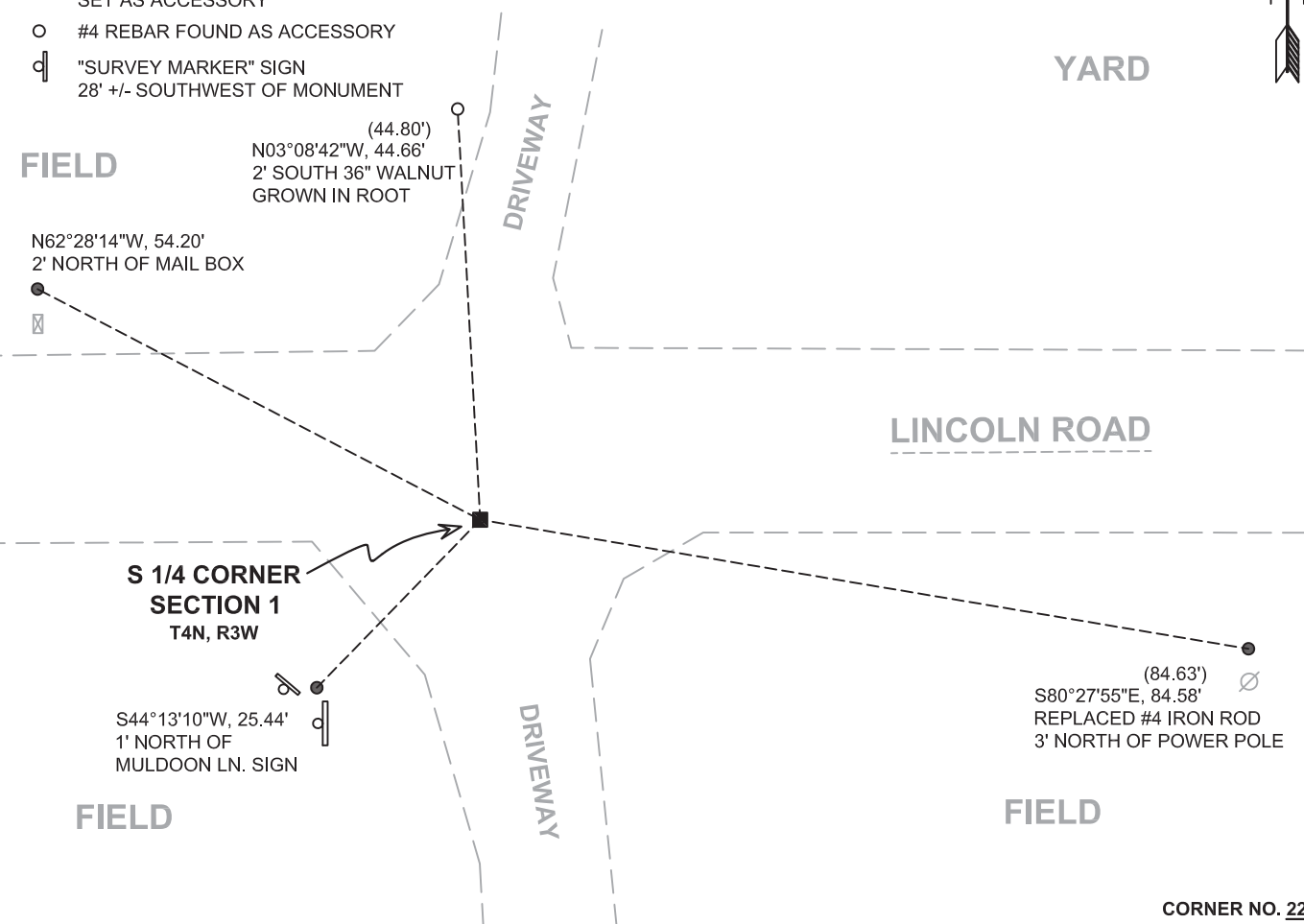
I COULD FIND NO MONUMENTS OR BEARING TREES FROM THE ORIGINAL GOVERNMENT SURVEY OR THE HISTORIC COUNTY SURVEYORS' SUBSEQUENT RESURVEYS. I RECOVERED THE 3/4" IRON ROD REFERENCED BY BUCK AND AUSTIN. I ACCEPTED THIS LOCATION AS THE BEST AVAILABLE EVIDENCE OF THE CORNER AND LEFT THE MONUMENT IN PLACE BECAUSE OF EXCEPTIONAL STABILITY.

(C) IN THE PLAN VIEW DRAWING BELOW, PROVIDE REFERENCE TIES TO AT LEAST 4 WITNESS MONUMENTS. WITNESS MONUMENTS SHALL BE MADE OF CONCRETE, NATURAL STONE, IRON, BEARING TREES OR ANY OTHER EQUALLY DURABLE MATERIAL. DEPICT THE RELEVANT MONUMENTS AND REFERENCE TIES WITH SUFFICIENT DETAIL TO ENABLE ACCURATE RELOCATION OF THE CORNER IF THE CORNER MONUMENT IS DISTURBED.

(D)

LEGEND:

- FOUND 3/4" IRON ROD
- 3/4" x 24" IRON ROD SET AS ACCESSORY
- #4 REBAR FOUND AS ACCESSORY
- d "SURVEY MARKER" SIGN 28' +/- SOUTHWEST OF MONUMENT



Remonumentation

(E) DESCRIBE ANY MATERIAL DISCREPANCY BETWEEN THE LOCATION OF THE CORNER AS RESTORED OR REESTABLISHED AND THE LOCATION OF THAT CORNER AS PREVIOUSLY RESTORED OR REESTABLISHED BY DISTANCE AND DIRECTION. SHOW THE DISCREPANCY ON THE PLAN VIEW DRAWING UNDER (D), ABOVE. SHOW THE DISTANCES BETWEEN THE CORNER AS PREVIOUSLY RESTORED OR REESTABLISHED AND (1) THE CORNER AS RESTORED OR REESTABLISHED, AND (2) TO AT LEAST 2 OF THE WITNESS MONUMENTS SHOWN ON THE DRAWING IN (D) ABOVE.

N/A

(F) WAS THE CORNER RESTORED THROUGH ACCEPTANCE OF (1) AN OBLITERATED EVIDENCE LOCATION, OR (2) A FOUND PERPETUATED LOCATION?

(2) A FOUND PERPETUATED LOCATION.

(G&H) WAS THE CORNER REESTABLISHED THROUGH LOST CORNER PROPORTIONATE METHODS? IF SO, SHOW THE METHOD, INCLUDING THE DIRECTIONS AND DISTANCES TO OTHER PUBLIC LAND SURVEY CORNERS USED AS EVIDENCE OR USED FOR PROPORTIONING IN DETERMINING THE CORNER LOCATION.

N/A

CORNER HISTORY

THE ORIGINAL GOVERNMENT CORNER WAS ESTABLISHED BY ROBERT CLARK JR. IN THE FIRST QUARTER OF 1833.

IN A SURVEY DATED JUNE 1844, WILTSE WAS AT THE CORNER.

IN A SURVEY DATED 25 DECEMBER 1900, SAMPSON SET THE CORNER SINGLE PROPORTIONATELY.

IN A TIE SHEET DATED 13 AUGUST 1999 AND A CERTIFIED SURVEY MAP DATED 6 APRIL 1999, THOMAS BUCK SET A 3/4" x 3/4" IRON ROD ONLINE BETWEEN THE SOUTHEAST AND SOUTHWEST CORNERS OF SECTION 1 AT THE PROJECTION OF OCCUPATION ALONG THE NORTH-SOUTH QUARTER SECTION LINE.

IN PLATS OF SURVEY DATED 29 SEPTEMBER 2013 AND 28 APRIL 2017, AARON AUSTIN FOUND BUCK'S 3/4" IRON ROD.

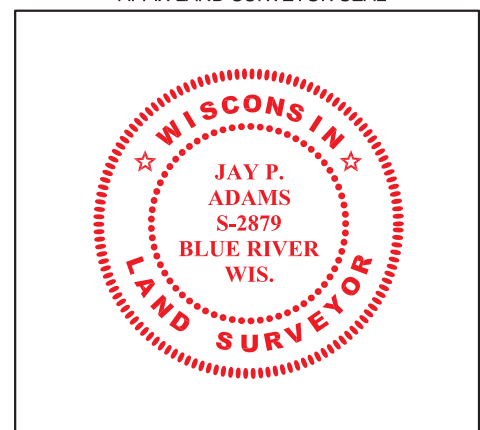
(I) I, JAY P. ADAMS, P.L.S. - 2879, CERTIFY THAT THE CORNER LOCATION SHOWN ON THIS RECORD WAS DETERMINED BY ME OR UNDER MY DIRECTION AND CONTROL AND THAT THIS U.S. PUBLIC LAND SURVEY MONUMENT RECORD IS CORRECT AND COMPLETE TO THE BEST OF MY KNOWLEDGE AND BELIEF.

SIGNATURE

2 JANUARY 2019

DATE

AFFIX LAND SURVEYOR SEAL



Survey Monument Record

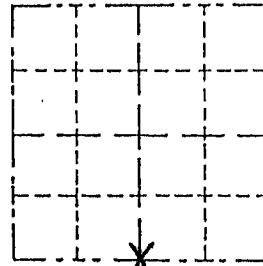
TYPE OF MONUMENT 3/4" X 24" IRON ROD
 STATE PLANE COORDINATES: N _____
 E _____
 ELEVATION — M.S.L. DATUM: _____
 THETA ANGLE: _____
 FIELD BOOK: _____
 PAGE _____

CORNER NO. _____
 SECTION 1
 TOWN 4 NORTH
 RANGE 3 WEST

BASIS FOR MONUMENT LOCATION

(Use reverse side if necessary)

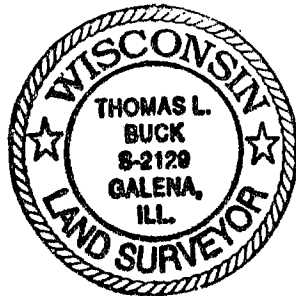
Show info such as: History of corner, with reference to Vol. and pg., dates, surveyor; exact description of monument replaced; if location computed, by taped or EDM traverse; landowner, remarks, etc.



LOCATION
 (Indicated by "X")

- FOUND PERPETUATED LOCATION
- OBLITERATED EVIDENCE LOCATION
- LOST CORNER (RESTORED BY PROPORTIONATE METHODS)

I FOUND NO HISTORY OF THIS CORNER SINCE THE ORIGINAL GOVERNMENT SURVEY. I SET THIS CORNER BY USING THE BEST FIT OF A NORTH-SOUTH FENCE ALONG THE N-S 1/4 LINE FOR MY EAST-WEST LOCATION AND I INTERSECTED A STRAIGHT LINE BETWEEN THE SW. CORNER AND THESE. CORNER. AFTER AN E.D.M. TRAVERSE AND A LOCATION SURVEY OF THE AREA.



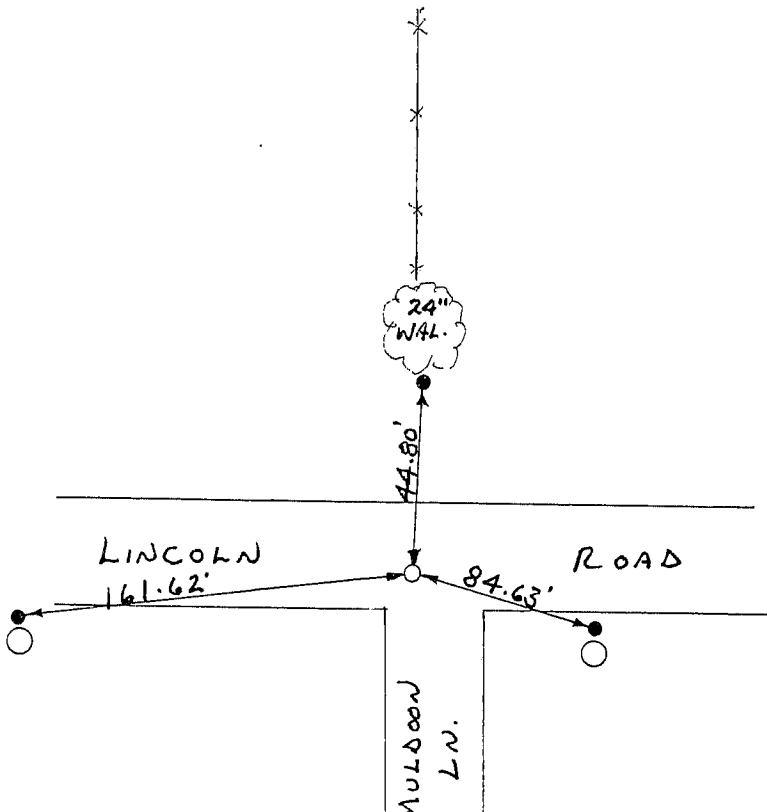
CERTIFIED CORRECT TO THE BEST OF MY KNOWLEDGE AND BELIEF

Thomas Buck
 Registered Land Surveyor

DATE: 8/13/99

TIE SKETCH

Show at least three (3) ties and monument



NO SCALE

- = EXISTING POWER POLE
- = 3/4" X 24" IRON ROD
- = 1/2" IRON ROD
- *-* = EXISTING FENCE