

# GRANT COUNTY

## U.S. PUBLIC LAND SURVEY MONUMENT RECORD

INSTRUCTIONS: THIS RECORD SHALL SHOW THE LOCATION OF THE CORNER AND SHALL INCLUDE ALL OF THE FOLLOWING ELEMENTS (A THROUGH I).

(A) IDENTIFY THE CORNER AS REFERENCED TO THE U.S. PUBLIC LAND SURVEY SYSTEM

■ = CORNER MONUMENT RESTORED

WITNESSES TO CORNER LOCATION:

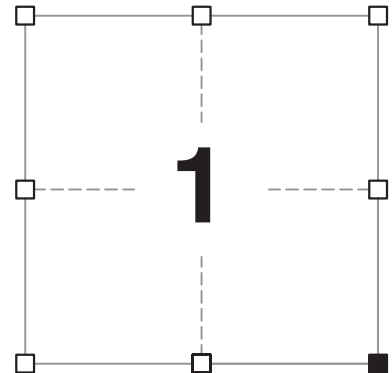
**STEVEN A. ALT**  
**BRADLEY A. SCHROEDER**

GEOGRAPHIC COORDINATES,  
NAD 83 (2011) ADJUSTMENT:

**LATITUDE:** 42° 50' 33.94584"  
**LONGITUDE:** 90° 39' 52.11693"

WISCONSIN COORDINATE REFERENCE SYSTEM (WISCRS),  
GRANT COUNTY, NAD 83 (2011) ADJUSTMENT:

**NORTHING:** 521,771.47  
**EASTING:** 831,349.03



**SECTION 1**  
**TOWNSHIP 4 NORTH, RANGE 3 WEST**  
**TOWN OF SOUTH LANCASTER**

(B) DESCRIBE ANY RECORD EVIDENCE, MONUMENT EVIDENCE, OCCUPATIONAL EVIDENCE, TESTIMONIAL EVIDENCE OR ANY OTHER MATERIAL EVIDENCE YOU CONSIDERED, AND WHETHER THE MONUMENT WAS FOUND OR PLACED.

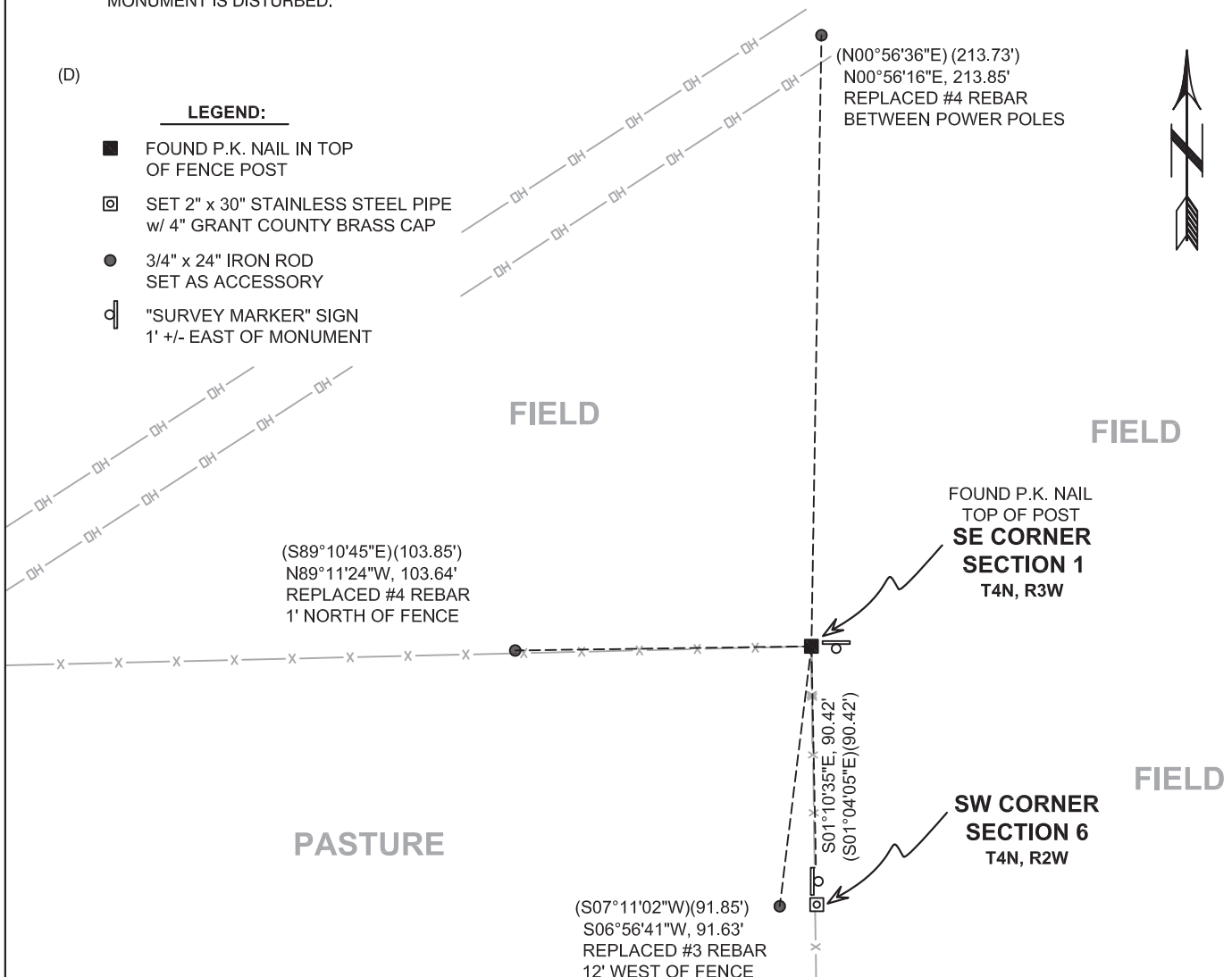
**I COULD FIND NO MONUMENTS OR BEARING TREES FROM THE ORIGINAL GOVERNMENT SURVEY OR THE HISTORIC COUNTY SURVEYOR'S SUBSEQUENT RESURVEY. I RECOVERED THE PK NAIL IN THE TOP OF THE FENCE POST AND ACCEPTED IT'S LOCATION AS THE BEST AVAILABLE EVIDENCE OF THE CORNER.**

(C) IN THE PLAN VIEW DRAWING BELOW, PROVIDE REFERENCE TIES TO AT LEAST 4 WITNESS MONUMENTS. WITNESS MONUMENTS SHALL BE MADE OF CONCRETE, NATURAL STONE, IRON, BEARING TREES OR ANY OTHER EQUALLY DURABLE MATERIAL. DEPICT THE RELEVANT MONUMENTS AND REFERENCE TIES WITH SUFFICIENT DETAIL TO ENABLE ACCURATE RELOCATION OF THE CORNER IF THE CORNER MONUMENT IS DISTURBED.

(D)

**LEGEND:**

- FOUND P.K. NAIL IN TOP OF FENCE POST
- SET 2" x 30" STAINLESS STEEL PIPE w/ 4" GRANT COUNTY BRASS CAP
- 3/4" x 24" IRON ROD SET AS ACCESSORY
- ⌋ "SURVEY MARKER" SIGN 1' +/- EAST OF MONUMENT



# Remonumentation

(E) DESCRIBE ANY MATERIAL DISCREPANCY BETWEEN THE LOCATION OF THE CORNER AS RESTORED OR REESTABLISHED AND THE LOCATION OF THAT CORNER AS PREVIOUSLY RESTORED OR REESTABLISHED BY DISTANCE AND DIRECTION. SHOW THE DISCREPANCY ON THE PLAN VIEW DRAWING UNDER (D), ABOVE. SHOW THE DISTANCES BETWEEN THE CORNER AS PREVIOUSLY RESTORED OR REESTABLISHED AND (1) THE CORNER AS RESTORED OR REESTABLISHED, AND (2) TO AT LEAST 2 OF THE WITNESS MONUMENTS SHOWN ON THE DRAWING IN (D) ABOVE.

N/A

(F) WAS THE CORNER RESTORED THROUGH ACCEPTANCE OF (1) AN OBLITERATED EVIDENCE LOCATION, OR (2) A FOUND PERPETUATED LOCATION?

(2) A FOUND PERPETUATED LOCATION.

(G&H) WAS THE CORNER REESTABLISHED THROUGH LOST CORNER PROPORTIONATE METHODS? IF SO, SHOW THE METHOD, INCLUDING THE DIRECTIONS AND DISTANCES TO OTHER PUBLIC LAND SURVEY CORNERS USED AS EVIDENCE OR USED FOR PROPORTIONING IN DETERMINING THE CORNER LOCATION.

N/A

## CORNER HISTORY

THE ORIGINAL GOVERNMENT CORNER WAS ESTABLISHED BY SYLVESTER SIBLEY IN THE SECOND QUARTER OF 1832.

IN A SURVEY DATED 25 DECEMBER 1900, CHARLES SAMPSON SET A STONE AT THE CORNER.

IN A TIE SHEET DATED 13 AUGUST 1999, THOMAS BUCK SET A PK NAIL IN CONCRETE. HE USED THE PK NAIL IN A CERTIFIED SURVEY MAP DATED 6 APRIL 1999.

IN A TIE SHEET DATED 25 JUNE 2008, LARRY AUSTIN SET A PK NAIL AT BUCK'S LOCATION IN TOP OF A FENCE POST.

IN A SURVEY DATED 17 APRIL 2017, AARON AUSTIN FOUND THE PK NAIL.

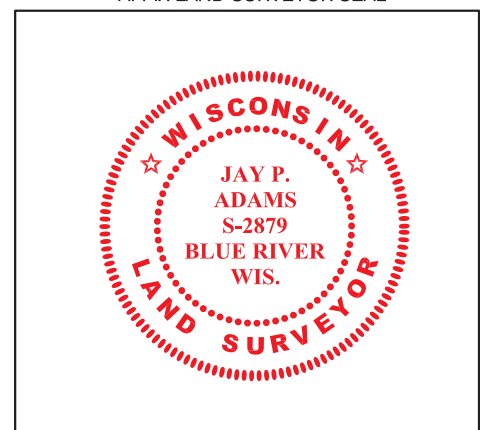
(I) I, JAY P. ADAMS, P.L.S. - 2879, CERTIFY THAT THE CORNER LOCATION SHOWN ON THIS RECORD WAS DETERMINED BY ME OR UNDER MY DIRECTION AND CONTROL AND THAT THIS U.S. PUBLIC LAND SURVEY MONUMENT RECORD IS CORRECT AND COMPLETE TO THE BEST OF MY KNOWLEDGE AND BELIEF.

SIGNATURE

7 JANUARY 2019

DATE

AFFIX LAND SURVEYOR SEAL



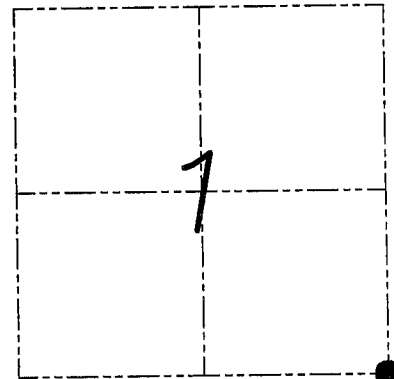
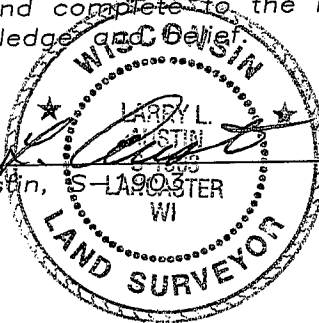
# U.S. PUBLIC LAND SURVEY MONUMENT RECORD

Section 1, Town 4 North Range 3 West, Town of South Lancaster, Grant County, Wisconsin

## CERTIFICATE

I, Larry L. Austin, do hereby certify that the corner location on this record was determined by me and/or under my direct supervision and that this U.S. public land survey monument record is correct and complete to the best of my knowledge and belief.

*Larry L. Austin*  
 Larry L. Austin, S-LANCASTER WI date 6.25.08



● = CORNER LOCATION

## HISTORY OF CORNER

Corner was originally set by Lyon. In 1999 Thomas Buck set a P.K. nail in an occupied fence corner. No recent record of the corner was found.

## CORNER EVIDENCE FOUND

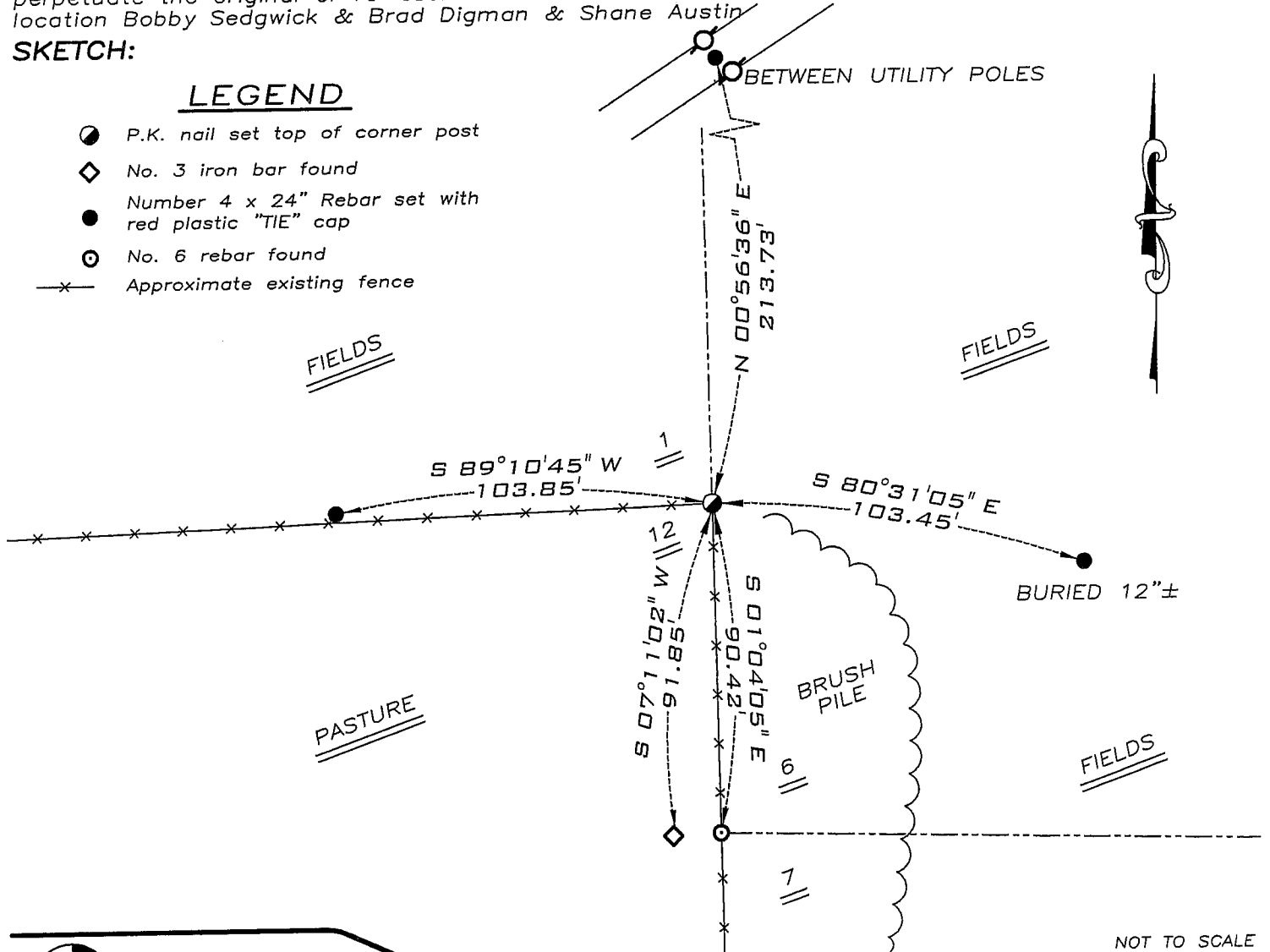
I reset the corner at the recorded Thomas Buck location. Verified this location using EDM & GPS methods.

**DESCRIPTION OF CORNER AND WITNESS MONUMENTS**, references and accessories used to perpetuate the original or re-established location of this corner. Witnesses to monument location Bobby Sedgwick & Brad Digman & Shane Austin

## SKETCH:

### LEGEND

- P.K. nail set top of corner post
- ◇ No. 3 iron bar found
- Number 4 x 24" Rebar set with red plastic "TIE" cap
- No. 6 rebar found
- x- Approximate existing fence



NOT TO SCALE



**Austin Engineering LLC**

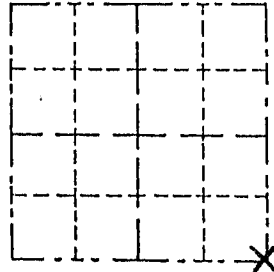
4211 HWY 81 E, LANCASTER, WI 53813  
 PHONE 608-723-6363 FAX 608-723-6702

JOB NUMBER 08S029-LENZ ESTATE  
 FIELDBOOK: TDSR, 2802 DRAWN BY: SW AUSTIN  
 G:\T5NR2W\32 APPROVED: LL AUSTIN  
 H:\TIE\T4NR3W\21

Survey Monument Record

CORNER NO. \_\_\_\_\_  
 SECTION 1  
 TOWN 4 NORTH  
 RANGE 3 WEST

TYPE OF MONUMENT P.K. NAIL IN CONCRETE  
 STATE PLANE COORDINATES: N \_\_\_\_\_  
 E \_\_\_\_\_  
 ELEVATION — M.S.L. DATUM: \_\_\_\_\_  
 THETA ANGLE: \_\_\_\_\_  
 FIELD BOOK: \_\_\_\_\_  
 PAGE \_\_\_\_\_



BASIS FOR MONUMENT LOCATION

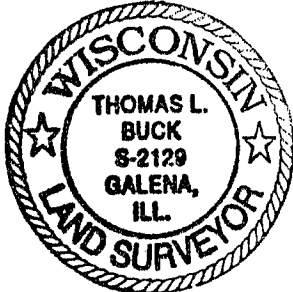
(Use reverse side if necessary)

Show info such as: History of corner, with reference to Vol. and pg., dates, surveyor; exact description of monument replaced; if location computed, by taped or EDM traverse; landowner, remarks, etc.

LOCATION  
 (Indicated by "X")

- FOUND PERPETUATED LOCATION
- OBLITERATED EVIDENCE LOCATION
- LOST CORNER (RESTORED BY PROPORTIONATE METHODS)

I FOUND NO HISTORY OF THIS CORNER SINCE THE ORIGINAL GOVERNMENT SURVEY. I SET THIS CORNER AT THE OCCUPIED FENCE CORNER WHICH FIT WELL WITH ALL THE OTHER PHYSICAL EVIDENCE. AFTER AN E.D.M. TRAVERSE AND LOCATION SURVEY OF THE AREA.



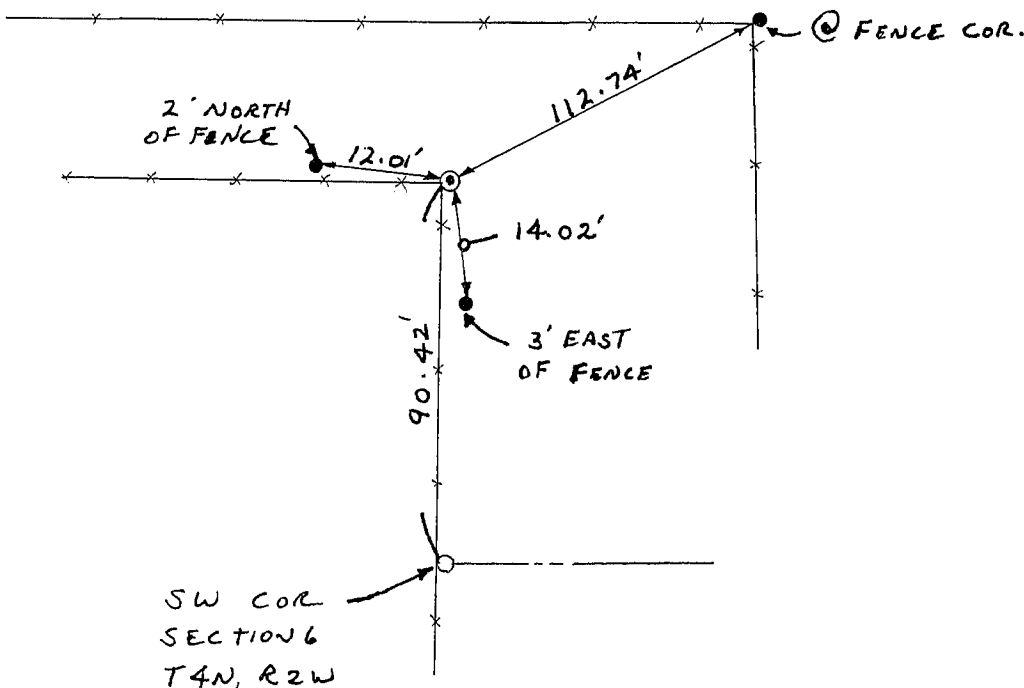
CERTIFIED CORRECT TO THE BEST OF MY KNOWLEDGE AND BELIEF

Thomas Buck  
 Registered Land Surveyor

DATE: 8/13/99

TIE SKETCH

Show at least three (3) ties and monument



NO SCALE

- ⊙ = P.K. NAIL IN CONC.
- = 3/4" X 24" IRON ROD
- = 1/2" IRON ROD
- \*—\*— = EXISTING FENCE