

GRANT COUNTY U.S. PUBLIC LAND SURVEY MONUMENT RECORD

INSTRUCTIONS: THIS RECORD SHALL SHOW THE LOCATION OF THE CORNER AND SHALL INCLUDE ALL OF THE FOLLOWING ELEMENTS (A THROUGH I).

(A) IDENTIFY THE CORNER AS REFERENCED TO THE U.S. PUBLIC LAND SURVEY SYSTEM

■ = CORNER MONUMENT RESTORED

WITNESSES TO CORNER LOCATION:

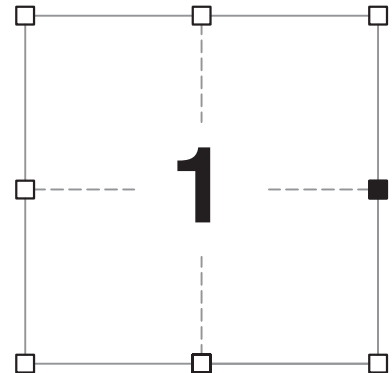
STEVEN A. ALT
BRADLEY A. SCHROEDER

GEOGRAPHIC COORDINATES,
NAD 83 (2011) ADJUSTMENT:

LATITUDE: 42° 51' 00.17309"
LONGITUDE: 90° 39' 52.80300"

WISCONSIN COORDINATE REFERENCE SYSTEM (WISCRS),
GRANT COUNTY, NAD 83 (2011) ADJUSTMENT:

NORTHING: 524,426.75
EASTING: 831,293.65



SECTION 1
TOWNSHIP 4 NORTH, RANGE 3 WEST
TOWN OF SOUTH LANCASTER

(B) DESCRIBE ANY RECORD EVIDENCE, MONUMENT EVIDENCE, OCCUPATIONAL EVIDENCE, TESTIMONIAL EVIDENCE OR ANY OTHER MATERIAL EVIDENCE YOU CONSIDERED, AND WHETHER THE MONUMENT WAS FOUND OR PLACED.

I COULD FIND NO MONUMENTS OR BEARING TREES FROM THE ORIGINAL GOVERNMENT SURVEY OR THE HISTORIC COUNTY SURVEYORS' RESURVEYS. I RECOVERED THE #8 REBAR WITH GRANT COUNTY ALUMINUM CAP REFERENCED BY LARRY AUSTIN AND ACCEPTED ITS LOCATION AS THE BEST AVAILABLE EVIDENCE OF THE CORNER.

(C) IN THE PLAN VIEW DRAWING BELOW, PROVIDE REFERENCE TIES TO AT LEAST 4 WITNESS MONUMENTS. WITNESS MONUMENTS SHALL BE MADE OF CONCRETE, NATURAL STONE, IRON, BEARING TREES OR ANY OTHER EQUALLY DURABLE MATERIAL. DEPICT THE RELEVANT MONUMENTS AND REFERENCE TIES WITH SUFFICIENT DETAIL TO ENABLE ACCURATE RELOCATION OF THE CORNER IF THE CORNER MONUMENT IS DISTURBED.

(D)

LEGEND:

- FOUND #8 REBAR w/ GRANT COUNTY ALUMINUM CAP
- ▣ FOUND GRANT COUNTY ALUMINUM CAP
- 3/4" x 24" IRON ROD SET AS ACCESSORY
- ⊓ "SURVEY MARKER" SIGN 0.5' +/- NORTH OF TIE

(N02°40'13"E) (334.45')
N02°33'44"E, 334.10'
REPLACED DISTURBED #4
REBAR IN FENCE



N06°59'49"E, 206.68'
2' SOUTH OF FENCE
CORNER

PASTURE

FIELD

FIELD

FIELD

E 1/4 CORNER
SECTION 1
T4N, R3W
(BURIED 16 INCHES)

W 1/4 CORNER
SECTION 6
T4N, R2W
(BURIED 16 INCHES)

(N80°59'28"W)(309.67')
N81°09'22"W, 309.83'
FOUND #6 REBAR
0.5' SOUTH OF FENCE

(N01°05'36"W)(90.42')
S01°11'42"E, 90.74'

Remonumentation

(E) DESCRIBE ANY MATERIAL DISCREPANCY BETWEEN THE LOCATION OF THE CORNER AS RESTORED OR REESTABLISHED AND THE LOCATION OF THAT CORNER AS PREVIOUSLY RESTORED OR REESTABLISHED BY DISTANCE AND DIRECTION. SHOW THE DISCREPANCY ON THE PLAN VIEW DRAWING UNDER (D), ABOVE. SHOW THE DISTANCES BETWEEN THE CORNER AS PREVIOUSLY RESTORED OR REESTABLISHED AND (1) THE CORNER AS RESTORED OR REESTABLISHED, AND (2) TO AT LEAST 2 OF THE WITNESS MONUMENTS SHOWN ON THE DRAWING IN (D) ABOVE.

N/A

(F) WAS THE CORNER RESTORED THROUGH ACCEPTANCE OF (1) AN OBLITERATED EVIDENCE LOCATION, OR (2) A FOUND PERPETUATED LOCATION?

(2) A FOUND PERPETUATED LOCATION.

(G&H) WAS THE CORNER REESTABLISHED THROUGH LOST CORNER PROPORTIONATE METHODS? IF SO, SHOW THE METHOD, INCLUDING THE DIRECTIONS AND DISTANCES TO OTHER PUBLIC LAND SURVEY CORNERS USED AS EVIDENCE OR USED FOR PROPORTIONING IN DETERMINING THE CORNER LOCATION.

N/A

CORNER HISTORY

THE ORIGINAL GOVERNMENT CORNER WAS ESTABLISHED BY SYLVESTER SIBLEY IN THE SECOND QUARTER OF 1832.

IN A SURVEY DATED JUNE 1844, WILTSE WAS AT THE CORNER.

IN A SURVEY DATED 22 MARCH 1880, JOEL BARBER WAS AT THE CORNER.

IN A SURVEY DATED 25 DECEMBER 1900, CHARLES SAMPSON NOTES "STONE CORNER BY MCNAIR."

IN A TIE SHEET DATED 25 JUNE 2008, LARRY AUSTIN REPORTS SETTING A #8 x 30" REBAR WITH A GRANT COUNTY ALUMINUM CAP AT THE RECORDED OFFSET FROM THE WEST QUARTER CORNER OF SECTION 6, T4N, R2W.

SINCE THAT TIME, LARRY AND AARON AUSTIN HAVE REPORTED FINDING THE #8 REBAR AND ALUMINUM CAP.

(I) I, JAY P. ADAMS, P.L.S. - 2879, CERTIFY THAT THE CORNER LOCATION SHOWN ON THIS RECORD WAS DETERMINED BY ME OR UNDER MY DIRECTION AND CONTROL AND THAT THIS U.S. PUBLIC LAND SURVEY MONUMENT RECORD IS CORRECT AND COMPLETE TO THE BEST OF MY KNOWLEDGE AND BELIEF.

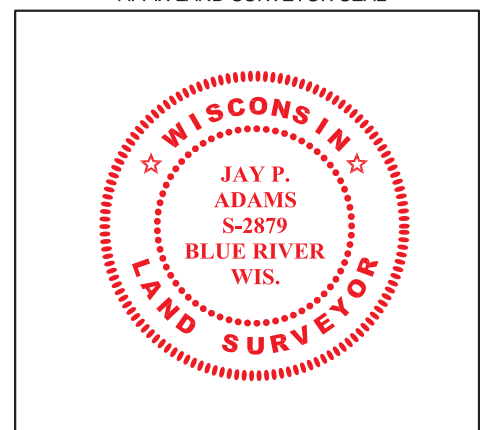


SIGNATURE

7 JANUARY 2019

DATE

AFFIX LAND SURVEYOR SEAL

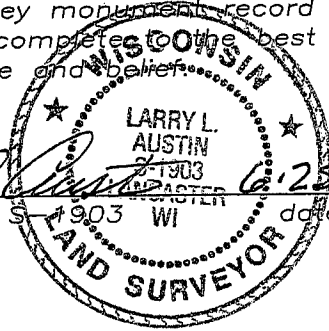


U.S. PUBLIC LAND SURVEY MONUMENT RECORD

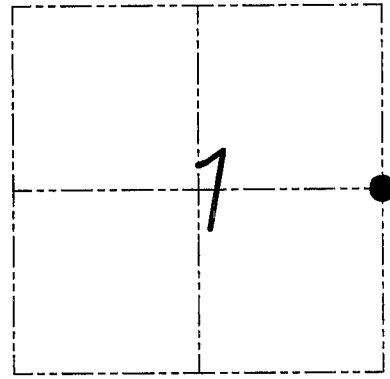
Section 1, Town 4 North Range 3 West, Town of South Lancaster, Grant County, Wisconsin

CERTIFICATE

I, Larry L. Austin, do hereby certify that the corner location on this record was determined by me and/or under my direct supervision and that this U.S. public land survey monument record is correct and complete to the best of my knowledge and belief.



Larry L. Austin
 Larry L. Austin, S 1903 WI date 6.25.08



● = CORNER LOCATION

HISTORY OF CORNER

Corner was originally set by Lyon.
 No other record of the corner was found.

CORNER EVIDENCE FOUND

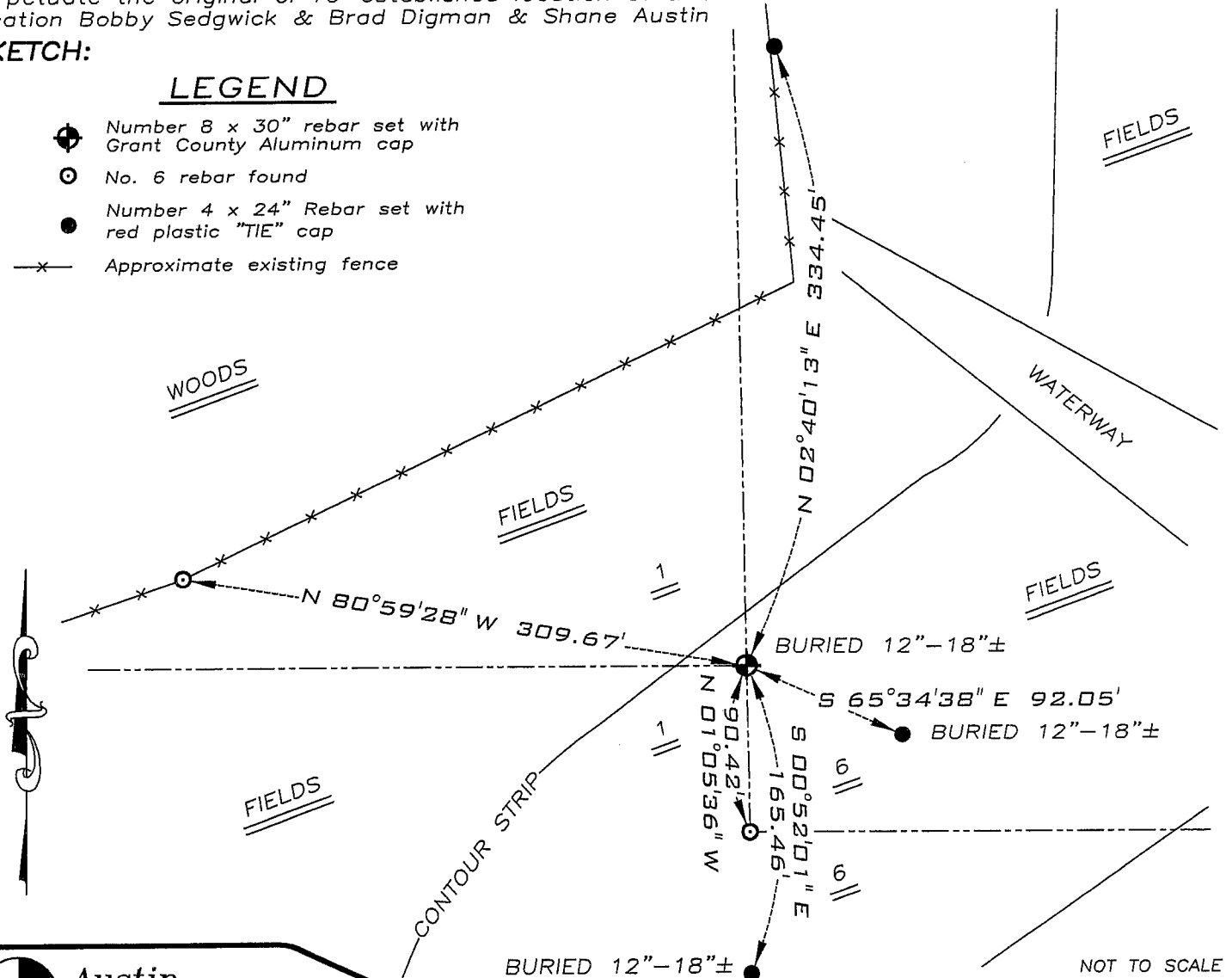
I reset the corner at the recorded offset from the West 1/4 corner of Section 6, T4N R2W. Verified this location using EDM & GPS methods.

DESCRIPTION OF CORNER AND WITNESS MONUMENTS, references and accessories used to perpetuate the original or re-established location of this corner. Witnesses to monument location Bobby Sedgwick & Brad Digman & Shane Austin

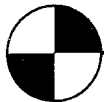
SKETCH:

LEGEND

- Number 8 x 30" rebar set with Grant County Aluminum cap
- No. 6 rebar found
- Number 4 x 24" Rebar set with red plastic "TIE" cap
- x- Approximate existing fence



NOT TO SCALE



Austin Engineering LLC

4211 HWY 81 E, LANCASTER, WI 53813
 PHONE 608-723-6363 FAX 608-723-6702

JOB NUMBER 08S029-LENZ ESTATE
 FIELDBOOK: TDSR, 2802
 G:\T5NR2W\32
 H:\TIE\T4NR3W\20

DRAWN BY: SW AUSTIN
 APPROVED: LL AUSTIN