

GRANT COUNTY U.S. PUBLIC LAND SURVEY MONUMENT RECORD

INSTRUCTIONS: THIS RECORD SHALL SHOW THE LOCATION OF THE CORNER AND SHALL INCLUDE ALL OF THE FOLLOWING ELEMENTS (A THROUGH I).

(A) IDENTIFY THE CORNER AS REFERENCED TO THE U.S. PUBLIC LAND SURVEY SYSTEM

■ = CORNER MONUMENT RESTORED

WITNESSES TO CORNER LOCATION:

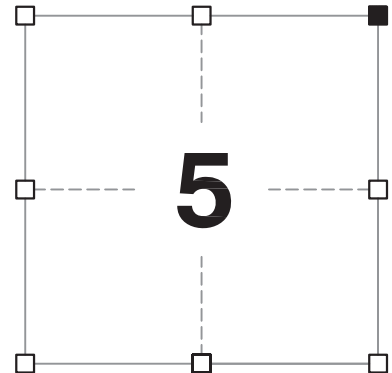
JAY P. ADAMS
TYLER D. ATKINSON

GEOGRAPHIC COORDINATES,
NAD 83 (2011) ADJUSTMENT:

LATITUDE: 42° 51' 27.71410"
LONGITUDE: 90° 44' 38.72187"

WISCONSIN COORDINATE REFERENCE SYSTEM (WISCRS),
GRANT COUNTY, NAD 83 (2011) ADJUSTMENT:

NORTHING: 527,190.95
EASTING: 809,992.32



SECTION 5
TOWNSHIP 4 NORTH, RANGE 3 WEST
TOWN OF SOUTH LANCASTER

(B) DESCRIBE ANY RECORD EVIDENCE, MONUMENT EVIDENCE, OCCUPATIONAL EVIDENCE, TESTIMONIAL EVIDENCE OR ANY OTHER MATERIAL EVIDENCE YOU CONSIDERED, AND WHETHER THE MONUMENT WAS FOUND OR PLACED.

I COULD FIND NO MONUMENTS OR BEARING TREES FROM THE ORIGINAL GOVERNMENT SURVEY OR THE HISTORIC COUNTY SURVEYOR'S SUBSEQUENT RESURVEYS. I RECOVERED THE DRIVEABLE ALUMINUM MONUMENT AND ALUMINUM CAP REFERENCED BY AUSTIN. I ACCEPTED THIS LOCATION AS THE BEST AVAILABLE EVIDENCE OF THE CORNER AND LEFT IT IN PLACE BECAUSE OF ADEQUATE STABILITY AND ITS CLOSE PROXIMITY TO A WOODEN SET POST. MONUMENT IS ON THE NORTH SIDE OF SAID WOODEN SET POST.

(C) IN THE PLAN VIEW DRAWING BELOW, PROVIDE REFERENCE TIES TO AT LEAST 4 WITNESS MONUMENTS. WITNESS MONUMENTS SHALL BE MADE OF CONCRETE, NATURAL STONE, IRON, BEARING TREES OR ANY OTHER EQUALLY DURABLE MATERIAL. DEPICT THE RELEVANT MONUMENTS AND REFERENCE TIES WITH SUFFICIENT DETAIL TO ENABLE ACCURATE RELOCATION OF THE CORNER IF THE CORNER MONUMENT IS DISTURBED.

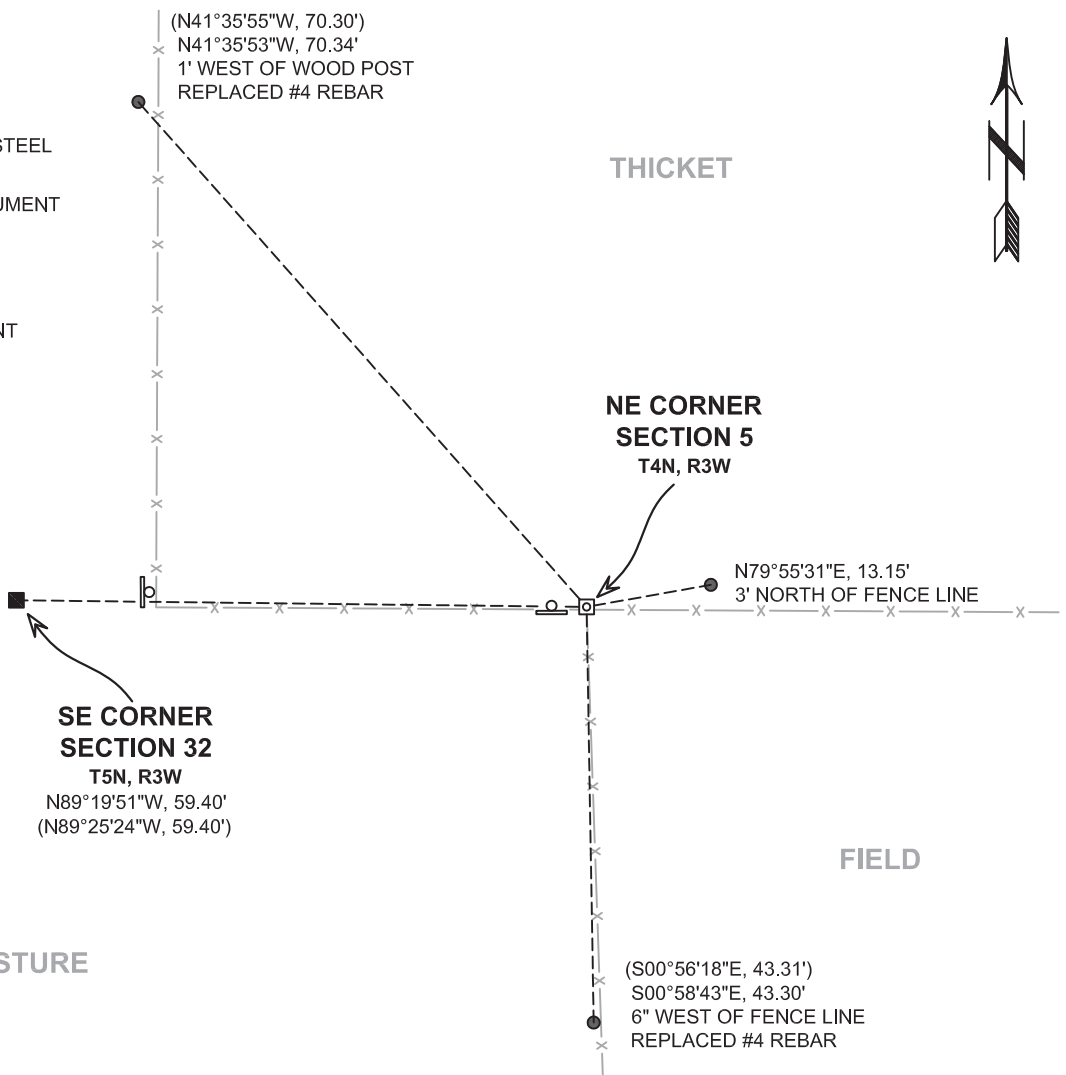
(D)

LEGEND:

- SET 2" x 30" STAINLESS STEEL PIPE w/ 4" BRASS CAP
- FOUND ALUMINUM MONUMENT
- 3/4" x 24" IRON ROD SET AS ACCESSORY
- ⊓ "SURVEY MARKER" SIGN 1' +/- WEST OF MONUMENT

PASTURE

THICKET



FIELD

PASTURE

Remonumentation

(E) DESCRIBE ANY MATERIAL DISCREPANCY BETWEEN THE LOCATION OF THE CORNER AS RESTORED OR REESTABLISHED AND THE LOCATION OF THAT CORNER AS PREVIOUSLY RESTORED OR REESTABLISHED BY DISTANCE AND DIRECTION. SHOW THE DISCREPANCY ON THE PLAN VIEW DRAWING UNDER (D), ABOVE. SHOW THE DISTANCES BETWEEN THE CORNER AS PREVIOUSLY RESTORED OR REESTABLISHED AND (1) THE CORNER AS RESTORED OR REESTABLISHED, AND (2) TO AT LEAST 2 OF THE WITNESS MONUMENTS SHOWN ON THE DRAWING IN (D) ABOVE.

N/A

(F) WAS THE CORNER RESTORED THROUGH ACCEPTANCE OF (1) AN OBLITERATED EVIDENCE LOCATION, OR (2) A FOUND PERPETUATED LOCATION?

(2) A FOUND PERPETUATED LOCATION.

(G&H) WAS THE CORNER REESTABLISHED THROUGH LOST CORNER PROPORTIONATE METHODS? IF SO, SHOW THE METHOD, INCLUDING THE DIRECTIONS AND DISTANCES TO OTHER PUBLIC LAND SURVEY CORNERS USED AS EVIDENCE OR USED FOR PROPORTIONING IN DETERMINING THE CORNER LOCATION.

N/A

CORNER HISTORY

THE ORIGINAL GOVERNMENT CORNER WAS ESTABLISHED BY ROBERT CLARK, JR. IN THE FIRST QUARTER OF 1833.

IN A SURVEY DATED 3 JUNE 1844, WILTSE WAS AT THE CORNER.

IN A SURVEY DATED 26 DECEMBER 1876, JOEL BARBER WAS AT THE CORNER.

IN TWO PLATS OF SURVEY DATED IN 1987, LARRY AUSTIN NOTES AN ALUMINUM MONUMENT AT THE CORNER.

SINCE THAT TIME, THE ALUMINUM MONUMENT HAS BEEN NOTED IN MANY SURVEYS.

IN A TIE SHEET DATED 26 DECEMBER 2013 AARON AUSTIN FOUND THE ALUMINUM MONUMENT AND CAP.

(I) I, JAY P. ADAMS, P.L.S. - 2879, CERTIFY THAT THE CORNER LOCATION SHOWN ON THIS RECORD WAS DETERMINED BY ME OR UNDER MY DIRECTION AND CONTROL AND THAT THIS U.S. PUBLIC LAND SURVEY MONUMENT RECORD IS CORRECT AND COMPLETE TO THE BEST OF MY KNOWLEDGE AND BELIEF.

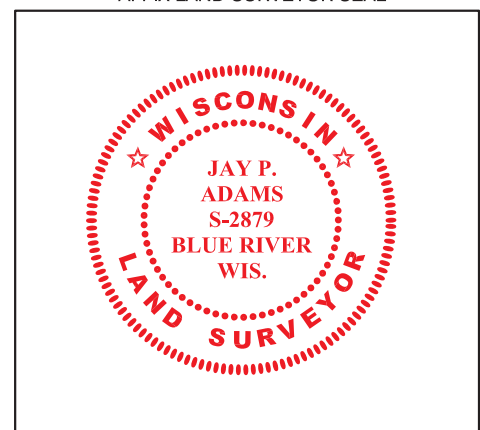


SIGNATURE

12 FEBRUARY 2019

DATE

AFFIX LAND SURVEYOR SEAL



U.S. PUBLIC LAND SURVEY MONUMENT RECORD - GRANT COUNTY, WI

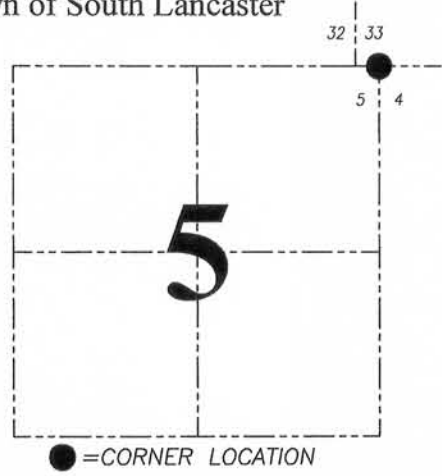
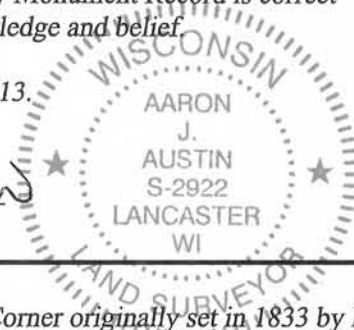
Section 5, Town 4 North Range 3 West, Town of South Lancaster

CERTIFICATE:

I, Aaron J. Austin, do hereby certify that the corner location on this record was determined by me and/or under my direct supervision and that this U.S. Public Land Survey Monument Record is correct and complete to the best of my knowledge and belief.

Dated this 26th day of December, 2013.

Aaron J. Austin
 Aaron J. Austin, S-2922



● = CORNER LOCATION

HISTORY OF CORNER ESTABLISHMENT:

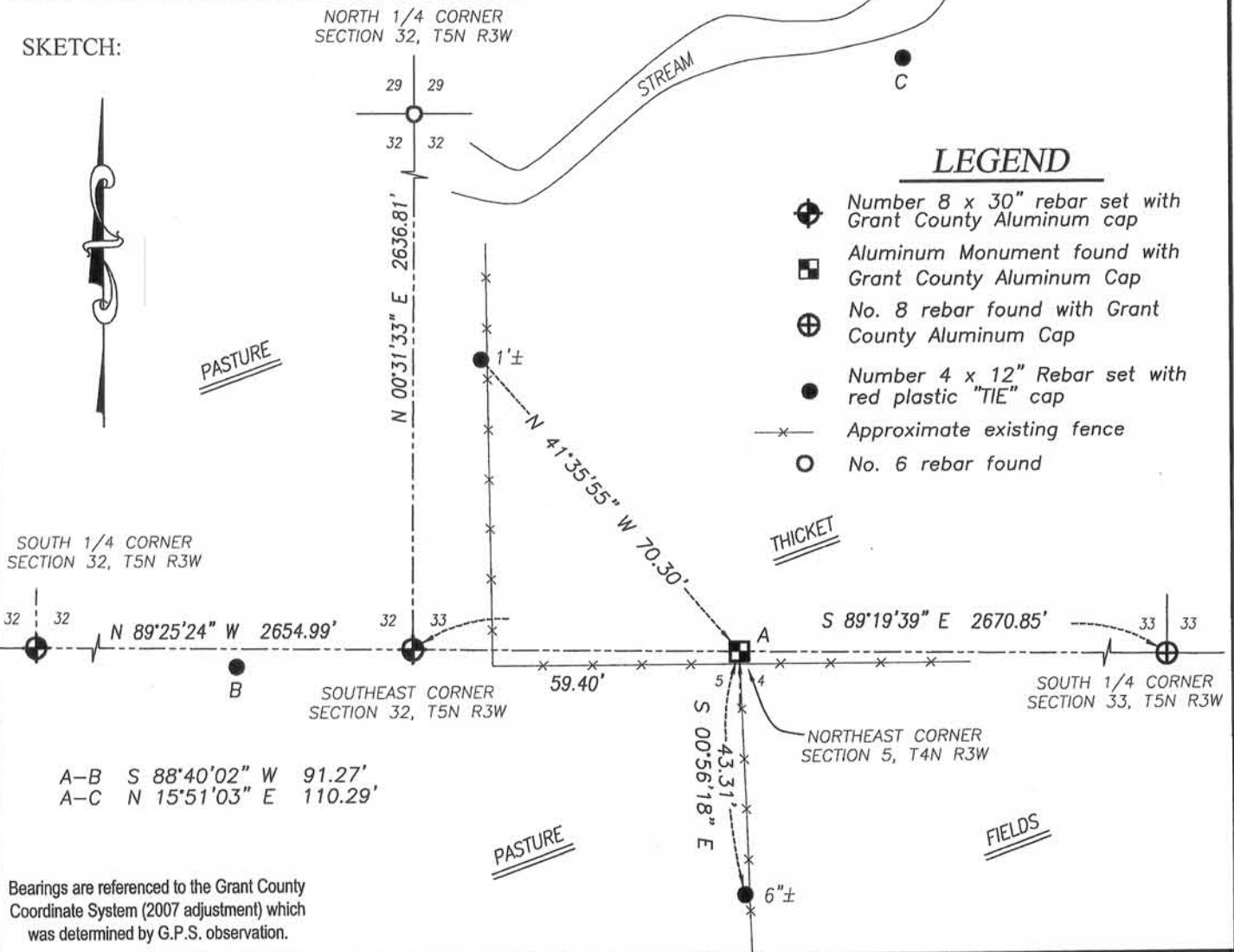
- Corner originally set in 1833 by Robert Clark.
- 1844-Samuel Wilste shown corner on a survey, Book A, Page 236.
- 1876-Joel Barber shown corner on a survey in Book D, Page 2.
- 1976-David Krohn shown corner on a survey in Book G, Page 159.
- 1977-David Krohn shown corner on a survey in Book G, Page 160.
- 1977-David Krohn shown corner on a survey in Book G, Page 161.
- 1987-Larry Austin shown corner on a survey in Book K, Page 180.
- 1987-Larry Austin shown corner on a survey in Book K, Page 181.
- 1997-Michael LaRosa shown corner on a survey in Book Z, Page 12.
- 1997-Michael LaRosa shown corner on survey in Book Z, Page 54.
- 2000-Bruce Bowden shown corner on a survey in Book 7, Page 31.
- 2012-Jimmy Rose shown corner on a survey in Book 32, Page 47.
- 2012-Jimmy Rose shown corner on a survey filed in Book 32, Page 64.

DESCRIPTION OF CORNER EVIDENCE FOUND:

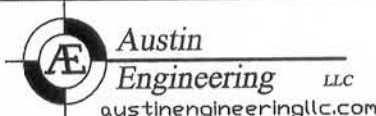
I found and accepted an Aluminum Monument shown on several surveys mentioned above. I verified this location with E.D.M. and G.P.S. methods.

DESCRIPTION OF CORNER AND WITNESS MONUMENTS, references and accessories used to perpetuate the original or re-established location of this corner. Witnesses to corner location Shane Austin

SKETCH:



Bearings are referenced to the Grant County Coordinate System (2007 adjustment) which was determined by G.P.S. observation.



4211 HWY 81 E, LANCASTER, WI 53813
 PHONE: 608-723-6363 FAX: 608-723-6702

JOB NO: 13S165
 G:\13S165
 H:\TIE\T4NR3W\09

FIELDBOOK: TDSR
 DRAWN BY: SW AUSTIN
 CREW: SW AUSTIN