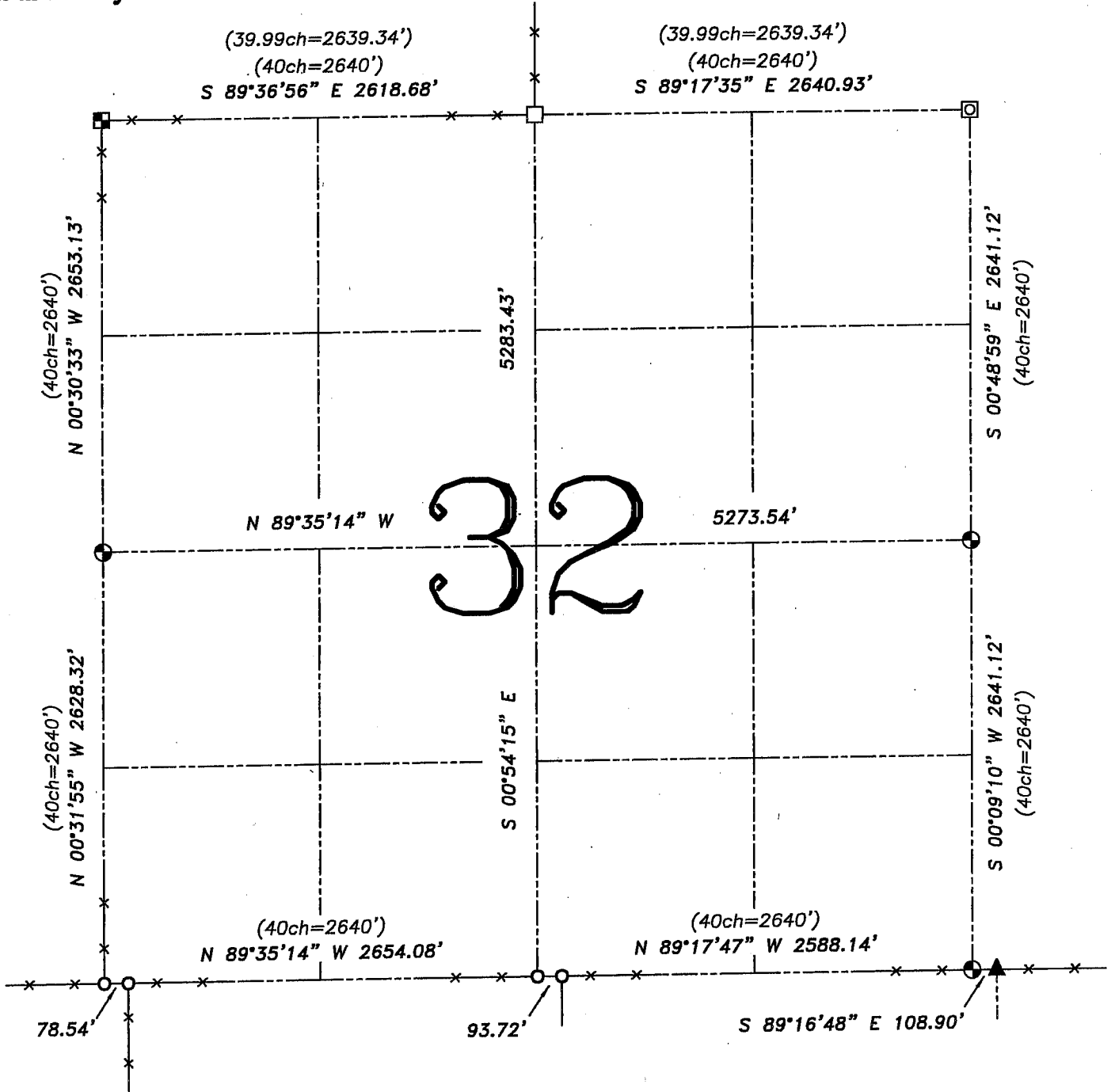


U.S. PUBLIC LAND SURVEY MONUMENT RECORD – GRANT COUNTY, WI

Summary of Section 32, Town 4 North, Range 2 West, Town of Ellenboro

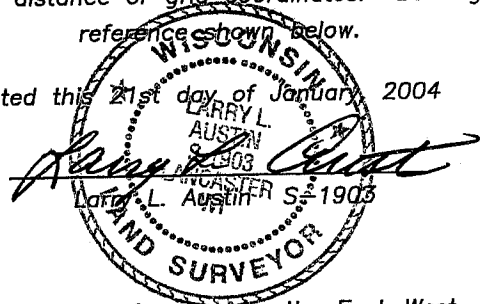


LEGEND

- ⊙ No. 8 x 30" rebar set with Grant County Aluminum Cap – wt=2.67#/l.f.
- No. 6 rebar found
- No. 10 rebar found
- ⊠ Aluminum Monument found with Grant County Aluminum Cap
- ▲ 2" diameter iron pipe found
- ⊡ No. 8 rebar found
- () Recorded as
- x— Approximate location of existing fence

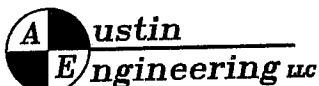
Relationship of all section corners to other section corners shall be shown hereon by bearing and distance or grid coordinates. Bearing reference shown below.

Dated this 21st day of January, 2004



Bearings referenced to the East-West Quarter line of this Section, which is assumed to bear N 89° 35' 14" W.

SKETCH NOT TO SCALE



4211 HWY 81 E, LANCASTER, WI 53813
PHONE 608-723-6363 FAX 608-723-6702

JOB NUMBER 03S052
FIELDBOOK: TSDR, 9726
G:\T4NR2W\T4NR2W
H:\TIE\T4NR2W\32SUM

DRAWN BY: SW AUSTIN
APPROVED: LL AUSTIN