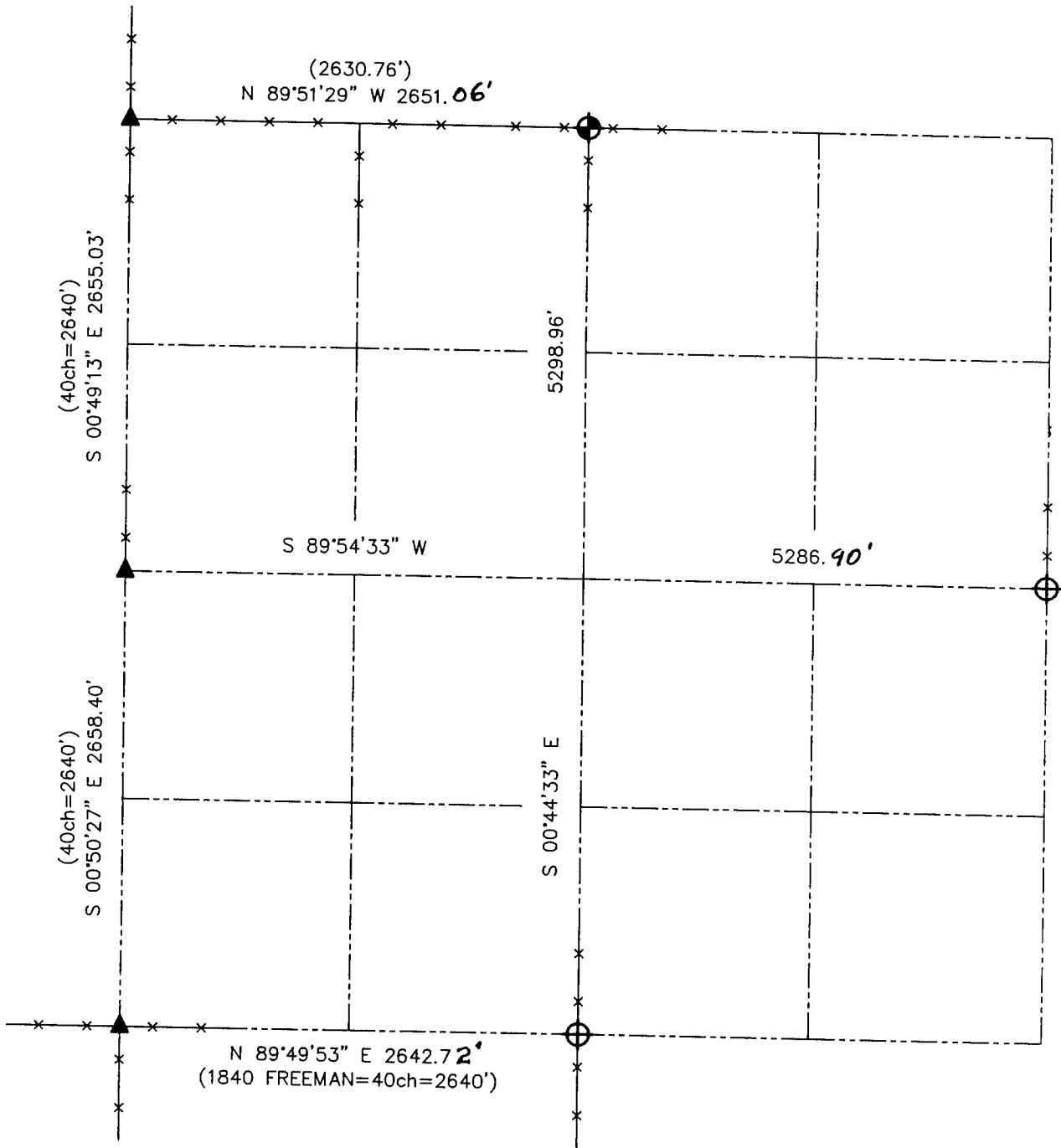


**U.S. PUBLIC LAND SURVEY MONUMENT RECORD - GRANT COUNTY, WI**  
 Summary of Section 26, Town 4 North Range 2 West, Town of Ellenboro



**LEGEND**

- NUMBER 8 x 30" REBAR SET WITH GRANT COUNTY ALUMINUM CAP
- NUMBER 8 REBAR FOUND WITH GRANT COUNTY ALUMINUM CAP
- 2" IRON PIPE FOUND
- ( ) RECORDED AS



Relationship of all section corners to other section corners shall be shown hereon by bearing and distance or grid coordinates. Bearing reference shown below.

Dated this 15th day of October, 2001  
  
 Larry I. Austin, S-1903  
 LAND SURVEYOR

Bearings referenced to the East-West Quarter line of Section, which is assumed to bear S 89°54'33" W.

SKETCH NOT TO SCALE

**AUSTIN ENGINEERING, LLC**

4211 HWY 81 EAST, LANCASTER, WI 53813  
 PHONE 608-723-6363 FAX 608-723-6702

FIELDBOOK: SDR33, 2109  
 G:\T4NR2W\26  
 C:\SWA\TIE\T4NR2W\26SUM

CREW: BS-SB-SA  
 DRAWN BY: SW AUSTIN  
 APPROVED: LL AUSTIN