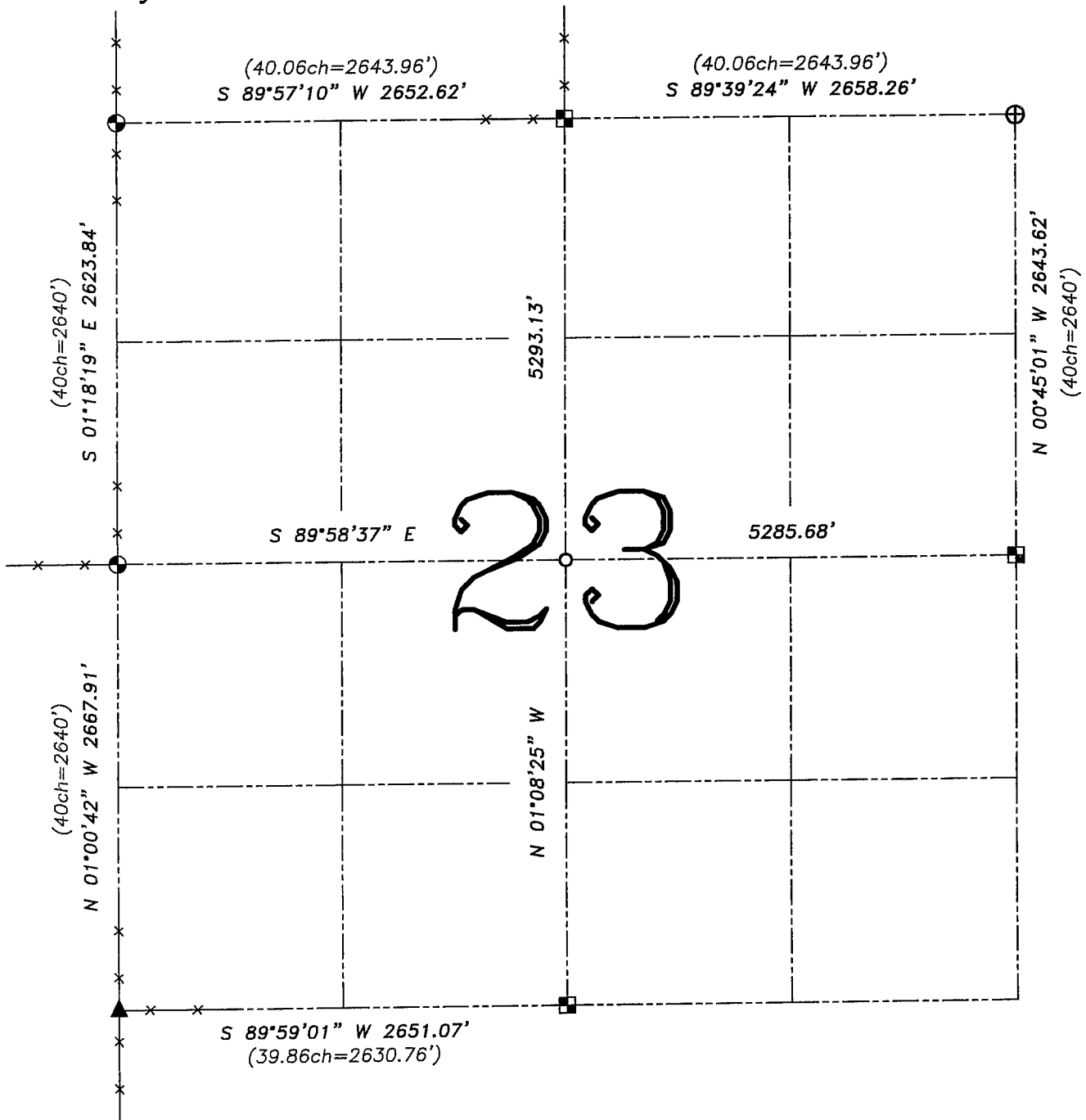


U.S. PUBLIC LAND SURVEY MONUMENT RECORD – GRANT COUNTY, WI

Summary of Section 23, Town 4 North, Range 2 West, Town of Ellenboro

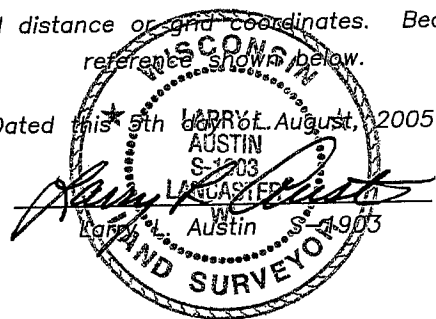


LEGEND

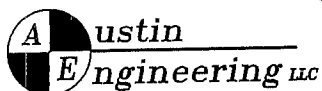
- ⊕ No. 8 rebar found with Grant County Aluminum Cap
- ⊙ No. 8 x 30" rebar set with Grant County Aluminum Cap – wt=2.67#/l.f.
- No. 6 rebar found
- ⊠ Aluminum Monument found with Grant County Aluminum Cap
- ▲ 2" Iron pipe found
- () Recorded as
- x— Approximate location of existing fence

Relationship of all section corners to other section corners shall be shown hereon by bearing and distance or grid coordinates. Bearing reference shown below.

Dated this 5th day of August, 2005



Bearings referenced to the South of the Southwest Quarter of this Section, which is assumed to bear S 89°59'01" W.



4211 HWY 81 E, LANCASTER, WI 53813
PHONE 608-723-6363 FAX 608-723-6702

JOB NUMBER: 05s073
FIELDBOOK: TDSR, 2510
G:\T4NR2W\24
H:\TIE\T4NR2W\23SUM

DRAWN BY: SW AUSTIN
APPROVED: LL AUSTIN

SKETCH NOT TO SCALE