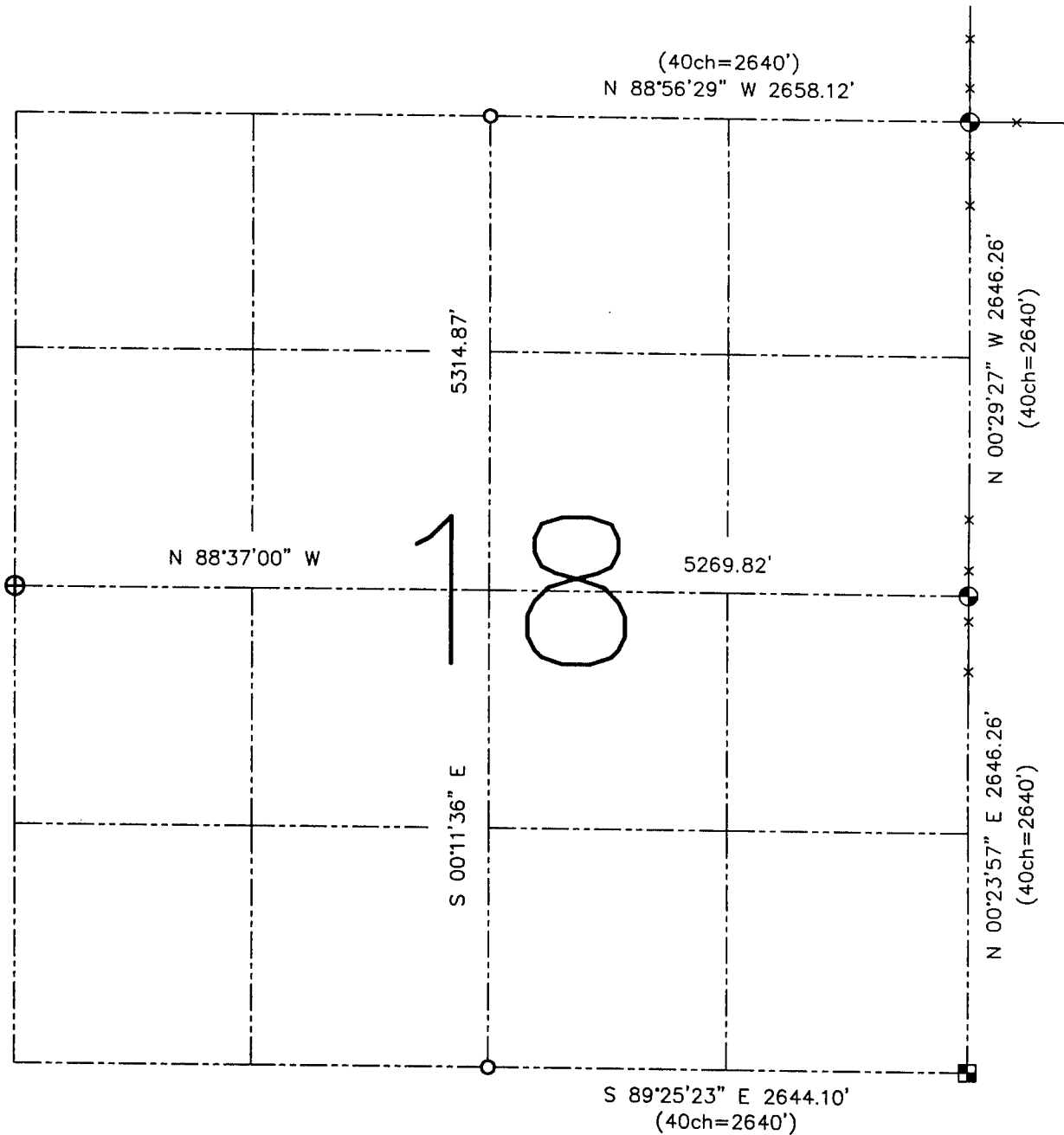


U.S. PUBLIC LAND SURVEY MONUMENT RECORD – GRANT COUNTY, WI

Summary of Section 18, Town 4 North, Range 2 West, Town of Ellenboro



LEGEND

- ⊕ No. 8 rebar found with Grant County Aluminum Cap
- ⊙ No. 8 x 30" rebar set with Grant County Aluminum Cap - wt=2.67#/l.f.
- No. 6 rebar found
- ⊠ Aluminum Monument found with Grant County Aluminum Cap

() Recorded as

—x— Approximate location of existing fence

Relationship of all section corners to other section corners shall be shown hereon by bearing and distance or grid coordinates. Bearing reference shown below.

Dated this 16th day of September 2002

Larry L. Austin
Larry L. Austin



Bearings referenced to the East-West Quarter line of this Section, which is assumed to bear N 88° 37' 00" W.

SKETCH NOT TO SCALE