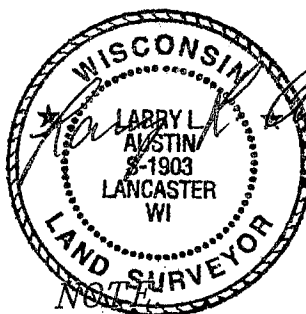
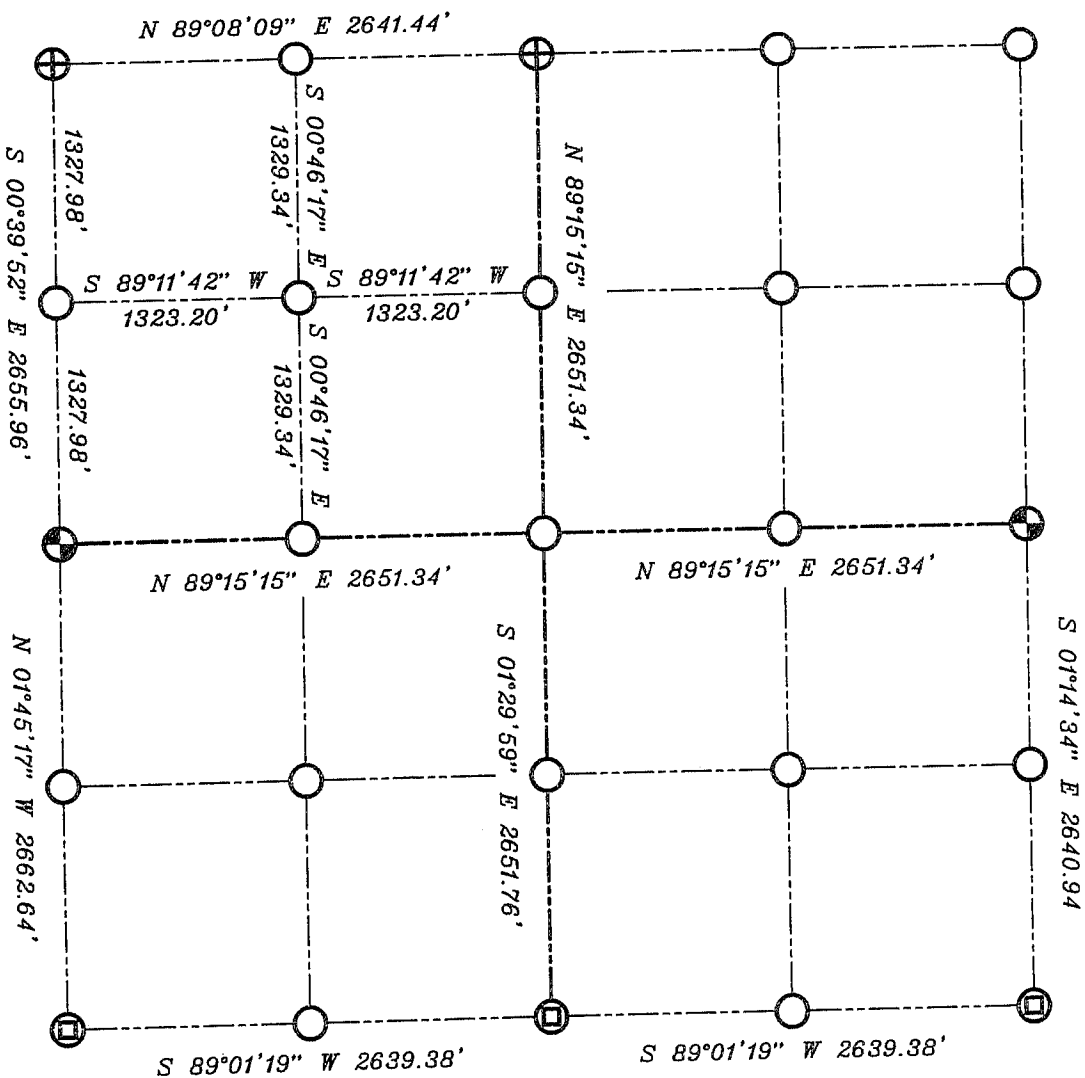





# GRANT COUNTY SECTION SUMMARY

$\frac{9}{\text{SECTION}} - \frac{4}{\text{TOWN}} - \frac{2}{\text{RANGE}}$



### LEGEND

-  NO. 8 X 30" REBAR SET WITH GRANT COUNTY ALUMINUM CAP
-  EXISTING ALUMINUM MONUMENT
-  EXISTING NO. 10 REBAR

Relationships of all section corners to other section corners shall be shown hereon by bearing and distance or grid coordinates  
Show or describe bearing reference



BEARINGS REFERENCED TO THE NORTH LINE OF THE NORTHWEST QUARTER OF SECTION 9, WHICH IS ASSUMED TO BEAR N 89°08'09" E.