

U.S. PUBLIC LAND SURVEY MONUMENT RECORD - GRANT COUNTY, WI

Section 31, Town 4 North Range 2 West, Town of Ellenboro (a)

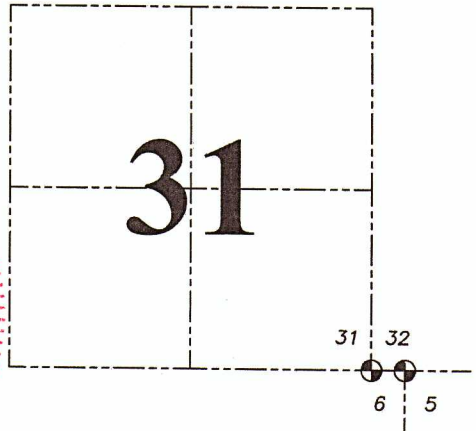
NOTE: This form is intended and designed to fulfill all requirements of the Wisconsin Administrative Code Chapter A-E 7.08, U.S. Public Land Survey Monument Record (3) (a) (b) (c) (d) (e) (f) (g) (h) (i).

CERTIFICATE: (i)

I, Aaron J. Austin, Wisconsin Professional Land Surveyor, do hereby certify that the corner location on this record was determined by me and/or under my direct supervision and that this U.S. Public Land Survey Monument Record is correct and complete to the best of my knowledge and belief.

Dated this 12th day of April, 2022.

Aaron J. Austin
Aaron J. Austin, S-2922



⊕ = CORNER LOCATION

Grant County Coordinates:
NAD 83 (2011)
Northing: 495,139.72
Easting: 837,048.80

HISTORY OF CORNER ESTABLISHMENT:

Original corner was set in 1832 by Sibley.
Larry Austin set a 3/4" Rebar and prepared a Survey Monument Record dated 9/12/1997.

DESCRIPTION OF CORNER EVIDENCE FOUND: (b) (f) (g) (h)

I set a 7/8" x 24" Rebar from two of Larry's witness corners. I set two additional witness corners after I verified the Monument's location with G.P.S. and E.D.M. methods.

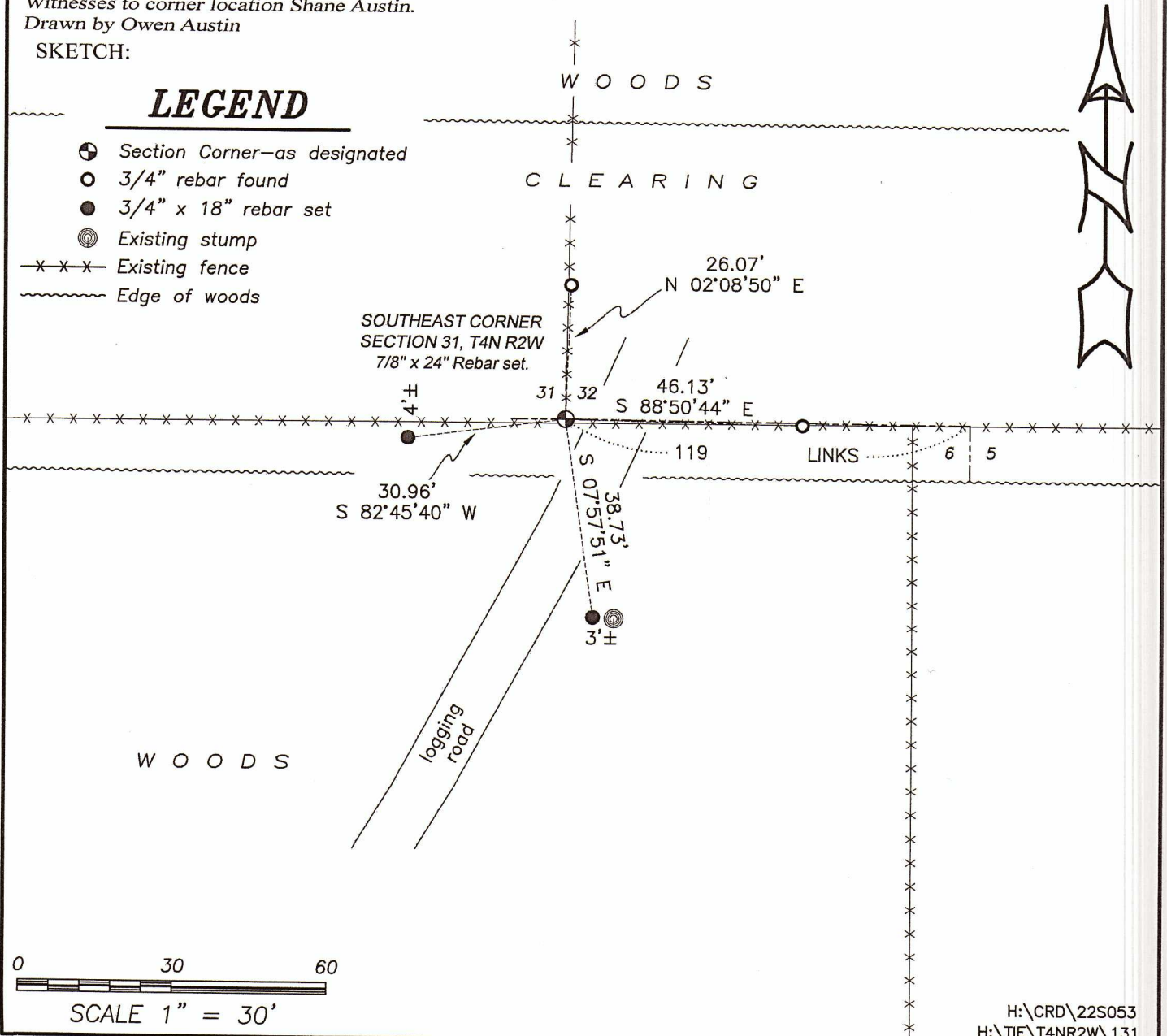
DESCRIPTION OF CORNER AND WITNESS MONUMENTS, references and accessories used to perpetuate the original or re-established location of this corner. (c) (d) (e)

Witnesses to corner location Shane Austin.
Drawn by Owen Austin

SKETCH:

LEGEND

- ⊕ Section Corner—as designated
- 3/4" rebar found
- 3/4" x 18" rebar set
- ⊙ Existing stump
- x-x-x- Existing fence
- ~~~~~ Edge of woods

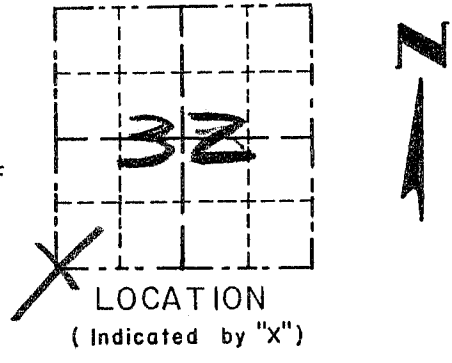


Survey Monument Record

TYPE OF MONUMENT 3/4" x 24" IRON BAR
SET

CORNER NO. 131
 SECTION 32
 TOWN 4N
 RANGE 2W

FIELD BOOK: 97-13
 PAGE (12)



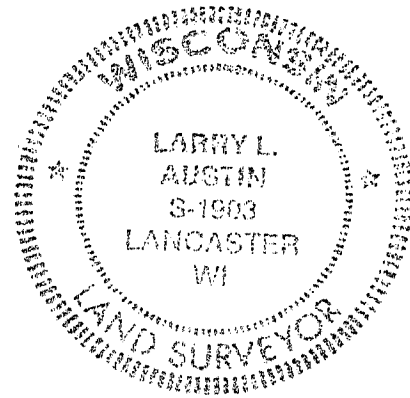
BASIS FOR MONUMENT LOCATION

(Use reverse side if necessary)

Show info such as: History of corner, with reference to Vol. and pg., dates, surveyor; exact description of monument replaced; if location computed, by taped or EDM traverse; landowner, remarks, etc.

SEAL:

CORNER WAS SET IN 1832 BY SIBLEY. I FOUND AN OCCUPIED FENCE CORNER. ACCEPTED ITS LOCATION AFTER AN EDM TRAVERSE OF AREA.



CERTIFIED CORRECT

Larry L. Austin
 Registered Land Surveyor

DATE: 9-12-97

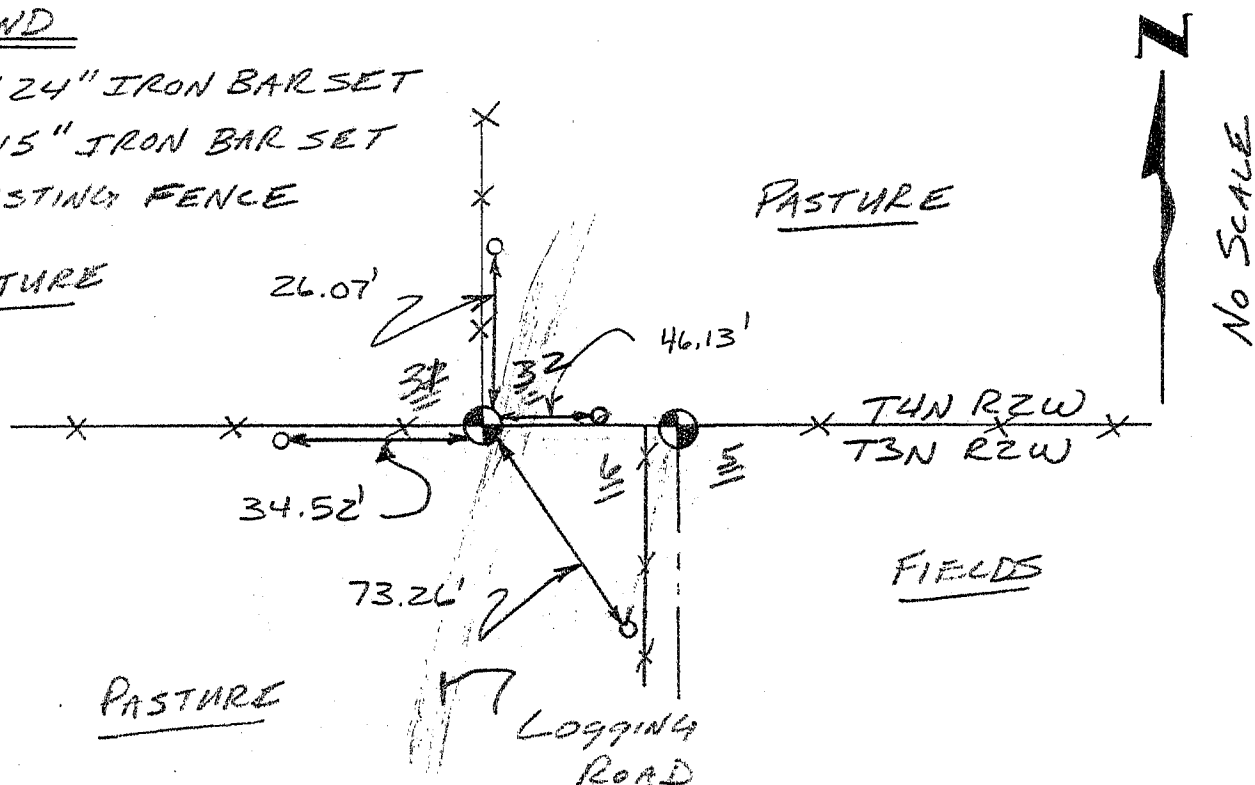
TIE SKETCH

Show at least three (3) ties and monument

LEGEND

- ⊕ 3/4" x 24" IRON BAR SET
- 1/2" x 15" IRON BAR SET
- XX EXISTING FENCE

PASTURE



PASTURE

Logging Road

No Scale