

GRANT COUNTY CERTIFIED LAND CORNER

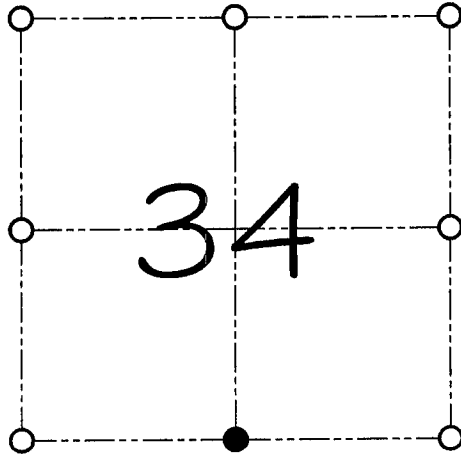
CORNER NUMBER 126

CERTIFICATE:

I, Larry L. Austin, do hereby certify that on the 2nd day of June, 2000, I found evidence of the South 1/4 corner of Section 34, Town 4 North, Range 2 West, of the 4th Principal Meridian, and I re-established said corner according to the Wisconsin statutes as shown and described hereon.

Dated this 20th day of October, 2000

Larry L. Austin
Larry L. Austin S-1903



● = CORNER LOCATION

SOUTH 1/4 CORNER OF
SECTION 34, T. 4 N R. 2 W
TOWN OF ELLENBORO

HISTORY OF ORIGINAL CORNER ESTABLISHMENT:

Corner was originally set in 1833 by Clark.
In 1990 I set a #6 Iron bar at this location.

DESCRIPTION OF CORNER EVIDENCE FOUND:

I found and accepted the #6 Iron bar.
I verified it's location after an EDM & GPS traverse of the area.

DESCRIPTION OF CORNER AND WITNESS MONUMENTS, references and accessories used to perpetuate the original or re-established location of this corner

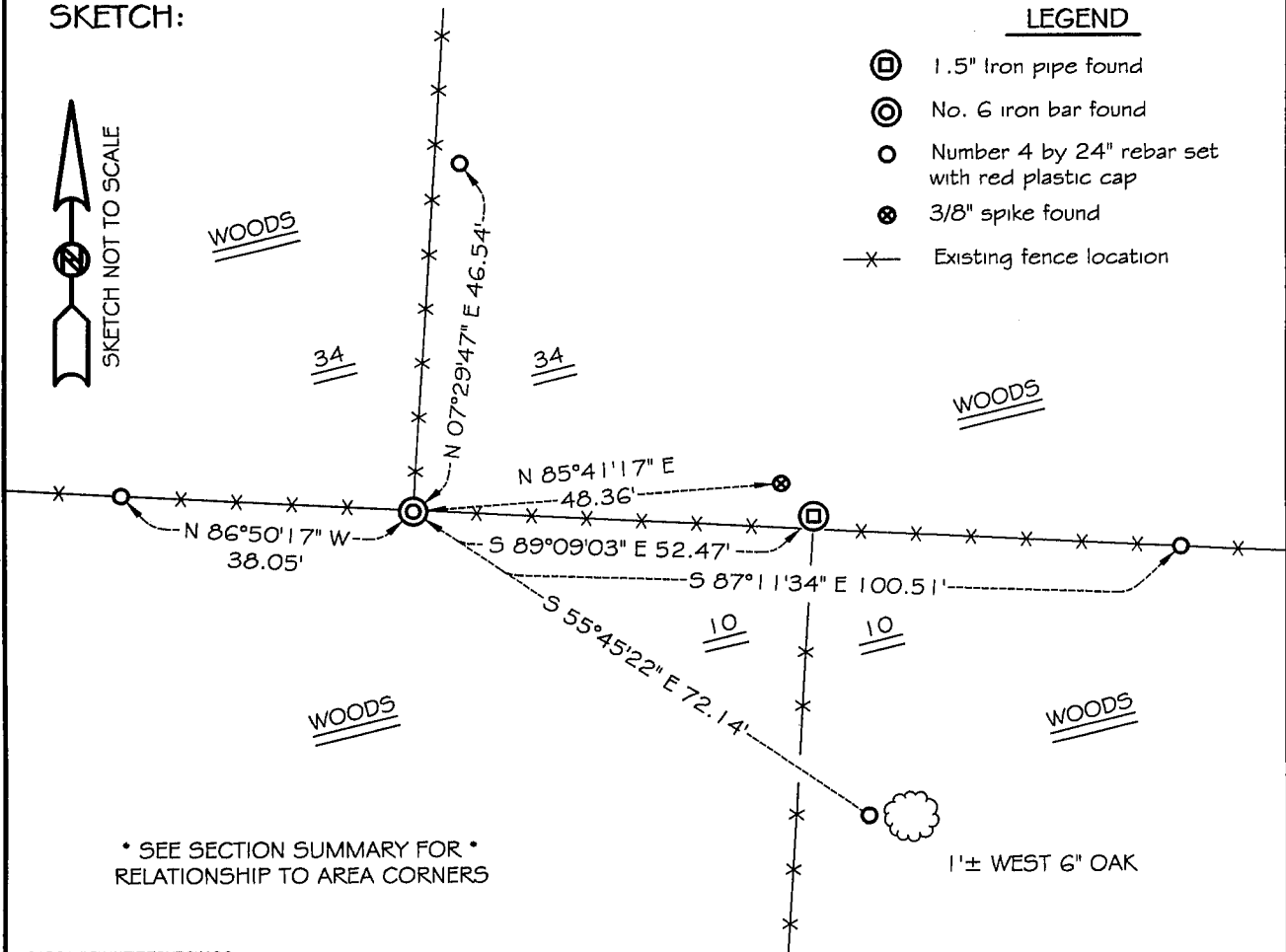
WITNESS TO THE CORNER LOCATION: SHELBY BLINDERT & BOBBY SEDGWICK

SKETCH:

LEGEND



- ⊙ 1.5" Iron pipe found
- ⊙ No. 6 iron bar found
- Number 4 by 24" rebar set with red plastic cap
- ⊗ 3/8" spike found
- x— Existing fence location



* SEE SECTION SUMMARY FOR *
RELATIONSHIP TO AREA CORNERS