

GRANT COUNTY CERTIFIED LAND CORNER

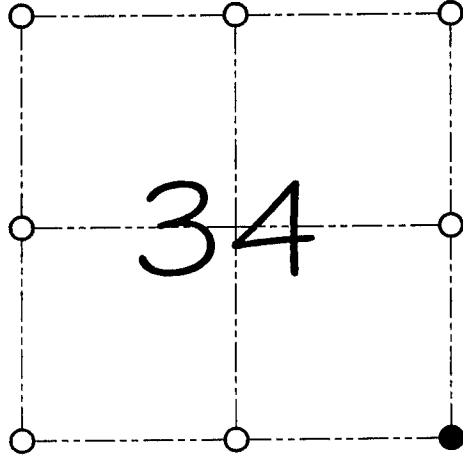
CORNER NUMBER 125

CERTIFICATE:

I, Larry L. Austin, do hereby certify that on the 2nd day of June, 2000, I found evidence of the Southeast corner of Section 34, Town 4 North, Range 2 West, of the 4th Principal Meridian, and I re-established said corner according to the Wisconsin statutes as shown and described hereon.

Dated this 20th day of October, 2000

Larry L. Austin
Larry L. Austin S-1903



● = CORNER LOCATION

SOUTHEAST CORNER OF SECTION 34, T.4 N R.2 W TOWN OF ELLENBORO

HISTORY OF ORIGINAL CORNER ESTABLISHMENT:

Corner was originally set in 1833 by Clark.
In 1993 I set an Aluminum monument at this location.

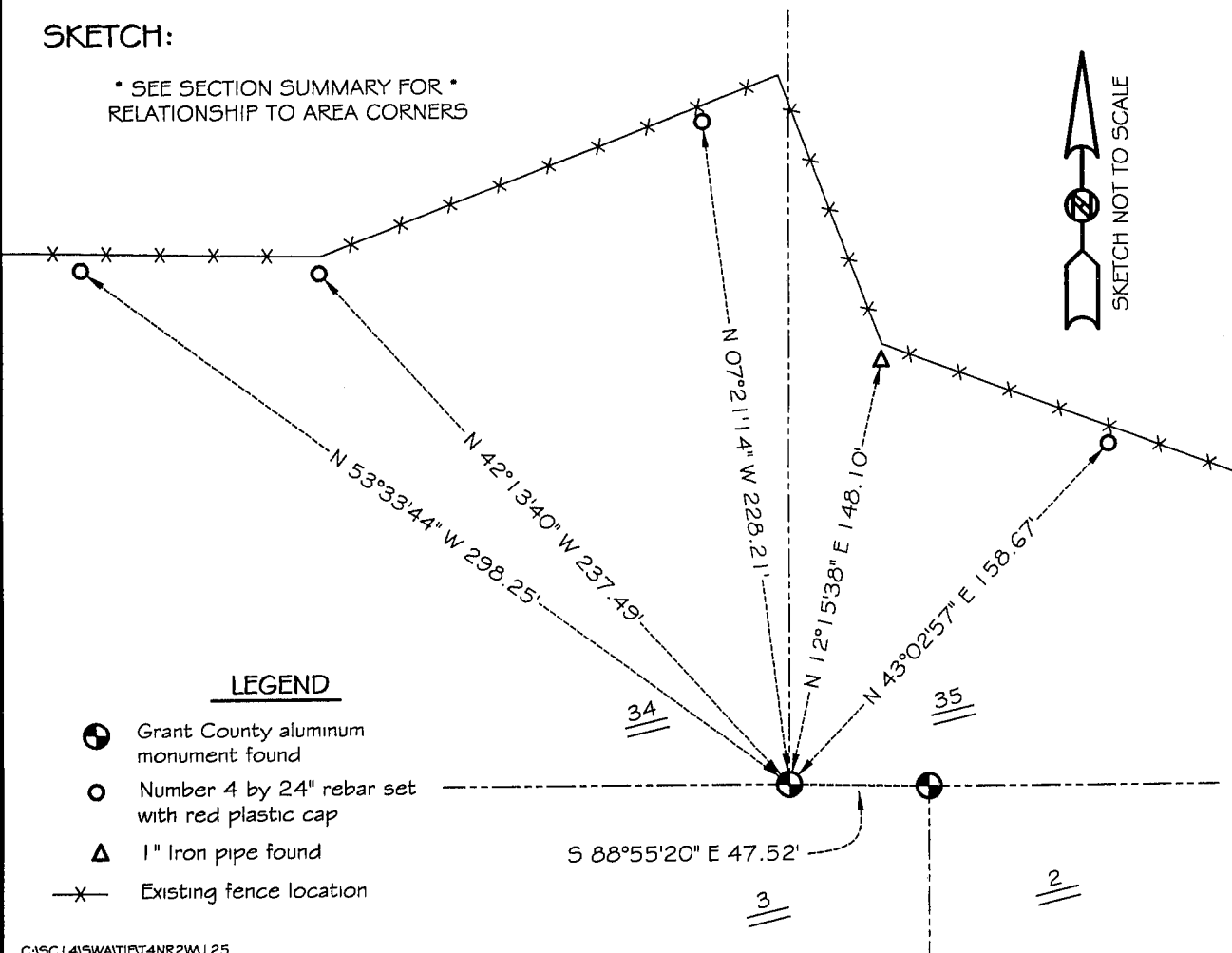
DESCRIPTION OF CORNER EVIDENCE FOUND:

I found and accepted the Aluminum monument after an EDM & GPS traverse of the area.

DESCRIPTION OF CORNER AND WITNESS MONUMENTS, references and accessories used to perpetuate the original or re-established location of this corner
WITNESS TO THE CORNER LOCATION: SHELBY BLINDERT & BOBBY SEDGWICK

SKETCH:

* SEE SECTION SUMMARY FOR *
RELATIONSHIP TO AREA CORNERS



LEGEND

- Grant County aluminum monument found
- Number 4 by 24" rebar set with red plastic cap
- △ 1" Iron pipe found
- x- Existing fence location