

REMON

42121

GRANT COUNTY U.S. PUBLIC LAND SURVEY MONUMENT RECORD

INSTRUCTIONS: THIS RECORD SHALL SHOW THE LOCATION OF THE CORNER AND SHALL INCLUDE ALL OF THE FOLLOWING ELEMENTS (A THROUGH I).

(A) IDENTIFY THE CORNER AS REFERENCED TO THE U.S. PUBLIC LAND SURVEY SYSTEM

■ = CORNER MONUMENT RESTORED

WITNESSES TO CORNER LOCATION:

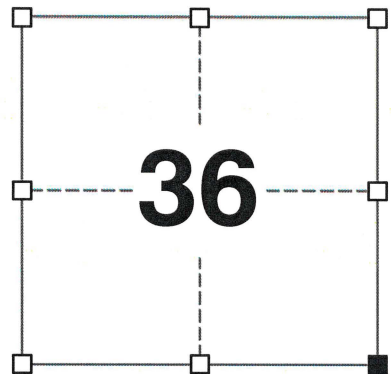
JAY P. ADAMS
TYLER D. ATKINSON

GEOGRAPHIC COORDINATES,
NAD 83 (2011) ADJUSTMENT:

LATITUDE: 42° 46' 08.89672"
LONGITUDE: 90° 32' 42.11552"

WISCONSIN COORDINATE REFERENCE SYSTEM (WISCRS),
GRANT COUNTY, NAD 83 (2011) ADJUSTMENT:

NORTHING: 495,011.148
EASTING: 863,466.829



SECTION 36
TOWNSHIP 4 NORTH, RANGE 2 WEST
TOWN OF ELLENBORO

(B) DESCRIBE ANY RECORD EVIDENCE, MONUMENT EVIDENCE, OCCUPATIONAL EVIDENCE, TESTIMONIAL EVIDENCE OR ANY OTHER MATERIAL EVIDENCE YOU CONSIDERED, AND WHETHER THE MONUMENT WAS FOUND OR PLACED.

I COULD FIND NO MONUMENTS OR BEARING TREES FROM THE ORIGINAL GOVERNMENT SURVEY OR THE HISTORIC COUNTY SURVEYOR'S SUBSEQUENT RESURVEYS. I RECOVERED THE 1" REBAR REPORTED BY LARRY AUSTIN. I ACCEPTED THIS LOCATION AS THE BEST AVAILABLE EVIDENCE OF THE ORIGINAL GOVERNMENT CORNER AND LEFT THE 1" REBAR IN PLACE.

(C) IN THE PLAN VIEW DRAWING BELOW, PROVIDE REFERENCE TIES TO AT LEAST 4 WITNESS MONUMENTS. WITNESS MONUMENTS SHALL BE MADE OF CONCRETE, NATURAL STONE, IRON, BEARING TREES OR ANY OTHER EQUALLY DURABLE MATERIAL. DEPICT THE RELEVANT MONUMENTS AND REFERENCE TIES WITH SUFFICIENT DETAIL TO ENABLE ACCURATE RELOCATION OF THE CORNER IF THE CORNER MONUMENT IS DISTURBED.

(D) (N32°20'22"W), (47.32')
N33°05'25"W, 47.42'
REPLACED NO. 4 REBAR
18' WEST OF ROAD EDGE

(N35°06'23"E), (48.90')
N34°16'37"E, 48.95'
REPLACED NO. 4 REBAR
11' EAST OF ROAD EDGE

FIELD

WHIG ROAD

FIELD



LEGEND:

- FOUND 1" REBAR
- 3/4" x 24" IRON ROD SET AS ACCESSORY
- ⊥ "SURVEY MARKER" SIGN 35' +/- EAST OF MONUMENT

SOUTHEAST
CORNER
SECTION 36
T4N, R2W

FIELD

FIELD

S33°28'24"W, 45.72'
18.5' WEST OF ROAD EDGE

(S37°15'48"E), (45.80')
S38°14'14"E, 45.76'
REPLACED NO. 4 REBAR
11' EAST OF ROAD EDGE

42121

(E) DESCRIBE ANY MATERIAL DISCREPANCY BETWEEN THE LOCATION OF THE CORNER AS RESTORED OR REESTABLISHED AND THE LOCATION OF THAT CORNER AS PREVIOUSLY RESTORED OR REESTABLISHED BY DISTANCE AND DIRECTION. SHOW THE DISCREPANCY ON THE PLAN VIEW DRAWING UNDER (D), ABOVE. SHOW THE DISTANCES BETWEEN THE CORNER AS PREVIOUSLY RESTORED OR REESTABLISHED AND (1) THE CORNER AS RESTORED OR REESTABLISHED, AND (2) TO AT LEAST 2 OF THE WITNESS MONUMENTS SHOWN ON THE DRAWING IN (D) ABOVE.

N/A

(F) WAS THE CORNER RESTORED THROUGH ACCEPTANCE OF (1) AN OBLITERATED EVIDENCE LOCATION, OR (2) A FOUND PERPETUATED LOCATION?

(2) A FOUND PERPETUATED LOCATION.

(G&H) WAS THE CORNER REESTABLISHED THROUGH LOST CORNER PROPORTIONATE METHODS? IF SO, SHOW THE METHOD, INCLUDING THE DIRECTIONS AND DISTANCES TO OTHER PUBLIC LAND SURVEY CORNERS USED AS EVIDENCE OR USED FOR PROPORTIONING IN DETERMINING THE CORNER LOCATION.

N/A

CORNER HISTORY

THE ORIGINAL GOVERNMENT CORNER WAS ESTABLISHED BY SYLVESTER SIBLEY IN THE SECOND QUARTER OF 1832.

IN SURVEYS DATED FEBRUARY 1841, JOS. E. FREEMAN VISITED THE CORNER.

IN A SURVEY DATED 30 JANUARY 1844, SAM WILTSE VISITED THE CORNER.

IN A SURVEY PLAT LAST REVISED 24 MAY 1988, LARRY AUSTIN REPORTED SETTING A 1" X 30" REBAR AT THE CORNER.

IN A TIE SHEET DATED 15 OCTOBER 1999, LARRY AUSTIN REPORTED FINDING A 1" REBAR AT THE CORNER.

IN A PLAT OF SURVEY LAST REVISED 31 DECEMBER 1999, LARRY AUSTIN REPORTED FINDING A NO. 6 REBAR AT THE CORNER.

IN A CERTIFIED SURVEY MAP DATED 27 MAY 2000, LARRY AUSTIN REPORTED FINDING A NO. 6 REBAR AT THE CORNER.

IN A CERTIFIED SURVEY MAP DATED 31 JULY 2000, LARRY AUSTIN REPORTED FINDING A NO. 6 REBAR AT THE CORNER.

IN A CERTIFIED SURVEY MAP DATED 13 JUNE 2005, LARRY AUSTIN REPORTED FINDING A NO. 6 REBAR AT THE CORNER.

IN A PLAT OF SURVEY DATED 17 OCTOBER 2008, LARRY AUSTIN REPORTED FINDING A NO. 6 REBAR AT THE CORNER.

IN A PLAT OF SURVEY DATED 8 DECEMBER 2015, AARON AUSTIN REPORTED FINDING A 1" REBAR AT THE CORNER.

IN A CERTIFIED SURVEY MAP DATED 3 FEBRUARY 2016, AARON AUSTIN REPORTED FINDING A 1" REBAR AT THE CORNER.

IN A PLAT OF SURVEY DATED 14 NOVEMBER 2016, AARON AUSTIN REPORTED FINDING A 1" REBAR AT THE CORNER.

IN A CERTIFIED SURVEY MAP DATED 12 NOVEMBER 2016, AARON AUSTIN REPORTED FINDING A 1" REBAR AT THE CORNER.

IN A PLAT OF SURVEY DATED 4 OCTOBER 2017, AARON AUSTIN REPORTED FINDING AN ALUMINUM MONUMENT AT THE CORNER.

AFFIX LAND SURVEYOR SEAL

(I) I, JAY P. ADAMS, P.L.S. - 2879, CERTIFY THAT THE CORNER LOCATION SHOWN ON THIS RECORD WAS DETERMINED BY ME OR UNDER MY DIRECTION AND CONTROL AND THAT THIS U.S. PUBLIC LAND SURVEY MONUMENT RECORD IS CORRECT AND COMPLETE TO THE BEST OF MY KNOWLEDGE AND BELIEF.

17 FEBRUARY 2020

SIGNATURE

DATE



GRANT COUNTY CERTIFIED LAND CORNER

CORNER NUMBER 121

CERTIFICATE:

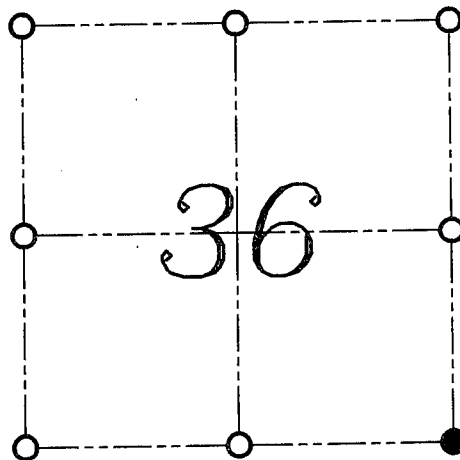
I, LARRY L. AUSTIN, DO HEREBY CERTIFY THAT ON THIRTEENTH DAY OF OCTOBER, 1999, I FOUND EVIDENCE OF THE SOUTHEAST CORNER OF SECTION 36, TOWN 4 NORTH, RANGE 2 WEST, OF THE FOURTH PRINCIPAL MERIDIAN, AND I RE-ESTABLISHED SAID CORNER ACCORDING TO THE WISCONSIN STATUTES AS SHOWN AND DESCRIBED HEREON.

DATED THIS FIFTEENTH DAY OF OCTOBER, 1999

Larry L. Austin
LARRY L. AUSTIN S-1903



SEAL



● = CORNER LOCATION

SOUTHEAST CORNER OF
SECTION 36, T 4 N R 2 W
TOWN OF ELLENBORO

HISTORY OF ORIGINAL CORNER ESTABLISHMENT:

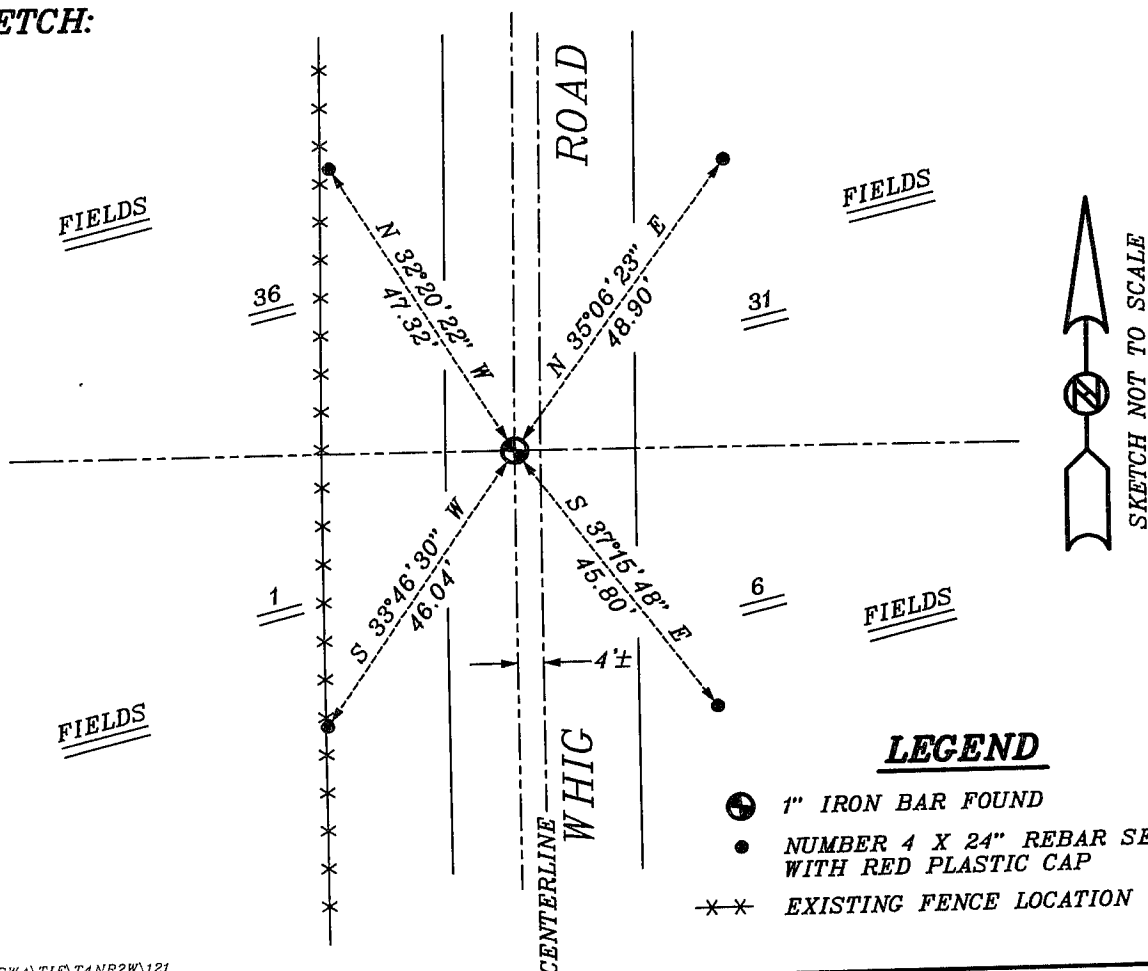
Corner was originally set in 1832 by Sibley.
I set a 1" by 30" rebar in 1988.

DESCRIPTION OF CORNER EVIDENCE FOUND:

I found the corner set in 1988.
I accepted it's location after an E.D.M. and G.P.S.
traverse of the area.

DESCRIPTION OF CORNER AND WITNESS MONUMENTS, REFERENCES AND ACCESSORIES USED TO PERPETUATE THE ORIGINAL OR RE-ESTABLISHED LOCATION OF THIS CORNER:
WITNESS TO THE CORNER LOCATION: BOBBY SEDGWICK ; SHELBY BLINDERT

SKETCH:



LEGEND

- 1" IRON BAR FOUND
- NUMBER 4 X 24" REBAR SET WITH RED PLASTIC CAP
- *-* EXISTING FENCE LOCATION