

Remon

42120

GRANT COUNTY U.S. PUBLIC LAND SURVEY MONUMENT RECORD

INSTRUCTIONS: THIS RECORD SHALL SHOW THE LOCATION OF THE CORNER AND SHALL INCLUDE ALL OF THE FOLLOWING ELEMENTS (A THROUGH I).

(A) IDENTIFY THE CORNER AS REFERENCED TO THE U.S. PUBLIC LAND SURVEY SYSTEM

■ = CORNER MONUMENT RESTORED

WITNESSES TO CORNER LOCATION:

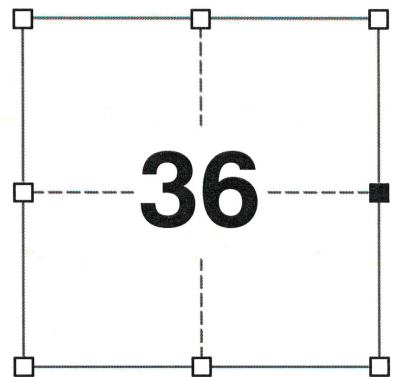
JAY P. ADAMS
TYLER D. ATKINSON

GEOGRAPHIC COORDINATES,
NAD 83 (2011) ADJUSTMENT:

LATITUDE: 42° 46' 35.26747"
LONGITUDE: 90° 32' 42.56966"

WISCONSIN COORDINATE REFERENCE SYSTEM (WISCRS),
GRANT COUNTY, NAD 83 (2011) ADJUSTMENT:

NORTHING: 497,680.903
EASTING: 863,424.890



SECTION 36
TOWNSHIP 4 NORTH, RANGE 2 WEST
TOWN OF ELLENBORO

(B) DESCRIBE ANY RECORD EVIDENCE, MONUMENT EVIDENCE, OCCUPATIONAL EVIDENCE, TESTIMONIAL EVIDENCE OR ANY OTHER MATERIAL EVIDENCE YOU CONSIDERED, AND WHETHER THE MONUMENT WAS FOUND OR PLACED.

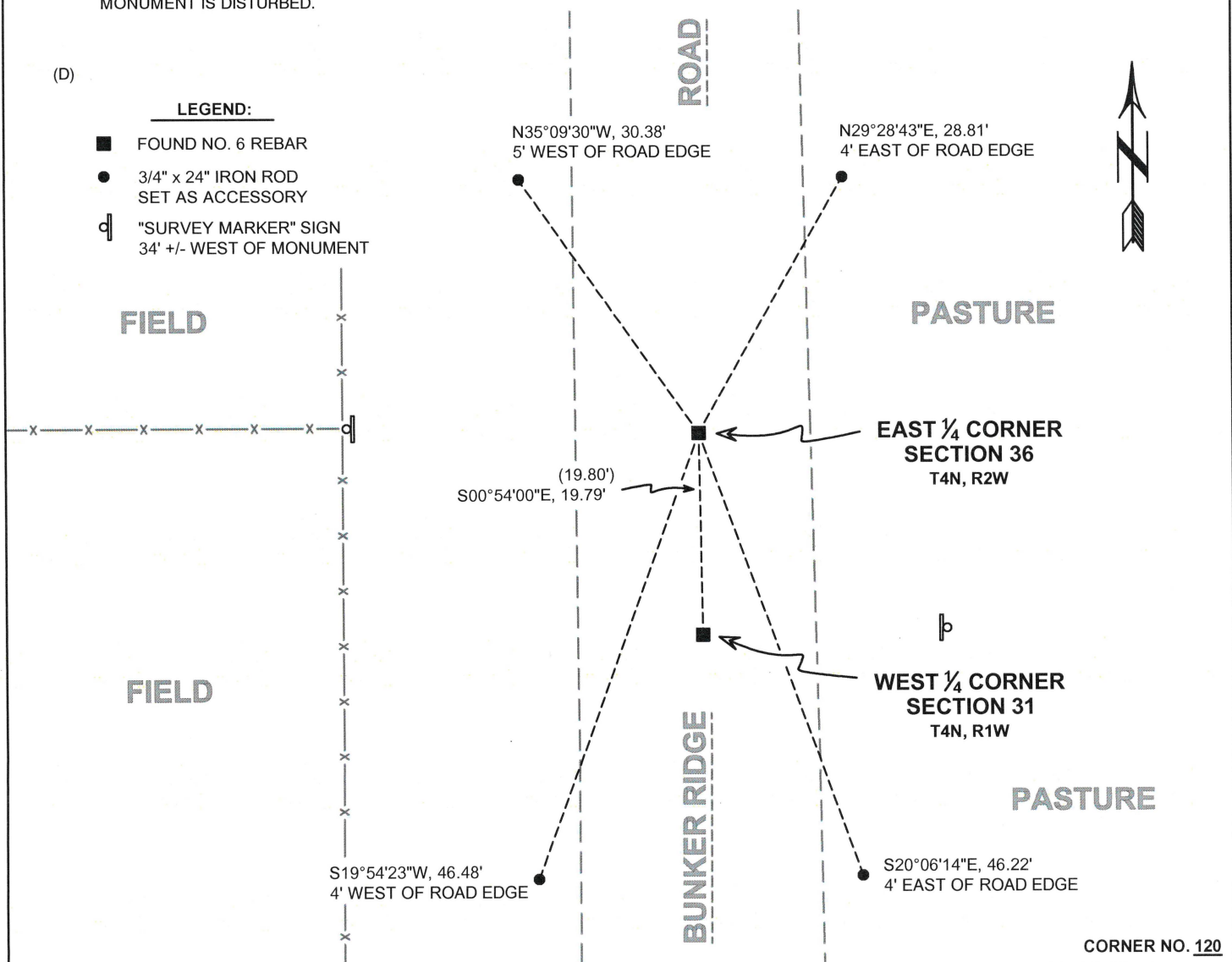
I COULD FIND NO MONUMENTS OR BEARING TREES FROM THE ORIGINAL GOVERNMENT SURVEY OR THE HISTORIC COUNTY SURVEYOR'S SUBSEQUENT RESURVEYS. I RECOVERED THE NO. 6 REBAR SET BY LARRY AUSTIN. I ACCEPTED THIS LOCATION AS THE BEST AVAILABLE EVIDENCE OF THE ORIGINAL GOVERNMENT CORNER AND LEFT THIS MONUMENT IN PLACE.

(C) IN THE PLAN VIEW DRAWING BELOW, PROVIDE REFERENCE TIES TO AT LEAST 4 WITNESS MONUMENTS. WITNESS MONUMENTS SHALL BE MADE OF CONCRETE, NATURAL STONE, IRON, BEARING TREES OR ANY OTHER EQUALLY DURABLE MATERIAL. DEPICT THE RELEVANT MONUMENTS AND REFERENCE TIES WITH SUFFICIENT DETAIL TO ENABLE ACCURATE RELOCATION OF THE CORNER IF THE CORNER MONUMENT IS DISTURBED.

(D)

LEGEND:

- FOUND NO. 6 REBAR
- 3/4" x 24" IRON ROD SET AS ACCESSORY
- d "SURVEY MARKER" SIGN 34' +/- WEST OF MONUMENT



(E) DESCRIBE ANY MATERIAL DISCREPANCY BETWEEN THE LOCATION OF THE CORNER AS RESTORED OR REESTABLISHED AND THE LOCATION OF THAT CORNER AS PREVIOUSLY RESTORED OR REESTABLISHED BY DISTANCE AND DIRECTION. SHOW THE DISCREPANCY ON THE PLAN VIEW DRAWING UNDER (D), ABOVE. SHOW THE DISTANCES BETWEEN THE CORNER AS PREVIOUSLY RESTORED OR REESTABLISHED AND (1) THE CORNER AS RESTORED OR REESTABLISHED, AND (2) TO AT LEAST 2 OF THE WITNESS MONUMENTS SHOWN ON THE DRAWING IN (D) ABOVE.

N/A

(F) WAS THE CORNER RESTORED THROUGH ACCEPTANCE OF (1) AN OBLITERATED EVIDENCE LOCATION, OR (2) A FOUND PERPETUATED LOCATION?

(2) A FOUND PERPETUATED LOCATION.

(G&H) WAS THE CORNER REESTABLISHED THROUGH LOST CORNER PROPORTIONATE METHODS? IF SO, SHOW THE METHOD, INCLUDING THE DIRECTIONS AND DISTANCES TO OTHER PUBLIC LAND SURVEY CORNERS USED AS EVIDENCE OR USED FOR PROPORTIONING IN DETERMINING THE CORNER LOCATION.

N/A

CORNER HISTORY

THE ORIGINAL GOVERNMENT CORNER WAS ESTABLISHED BY SYLVESTER SIBLEY IN APRIL 1832.

IN A SURVEY DATED 3 AUGUST 1840, THOMAS HUGILL VISITED THE CORNER.

IN A SURVEY DATED 7 JANUARY 1842, JOS. E. FREEMAN VISITED THE CORNER.

IN A SURVEY DATED 30 JANUARY 1844, SAM WILTSE VISITED THE CORNER.

IN A SURVEY PLAT DATED 23 APRIL 1997 AND SUBSEQUENT TIE SHEET DATED 20 DECEMBER 1997, LARRY AUSTIN SET A 3/4" X 24" IRON BAR AT THE CORNER.

IN A PLAT OF SURVEY LAST REVISED 31 DECEMBER 1999, LARRY AUSTIN REPORTED A NO. 6 REBAR AT THE CORNER.

IN A CERTIFIED SURVEY MAP DATED 27 MAY 2000, LARRY AUSTIN REPORTED A NO. 6 REBAR AT THE CORNER.

IN A PLAT OF SURVEY DATED 16 SEPTEMBER 2004, LARRY AUSTIN REPORTED A NO. 6 REBAR AT THE CORNER.

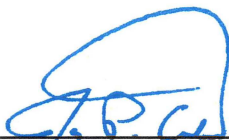
IN A PLAT OF SURVEY DATED 25 JANUARY 2010, LARRY AUSTIN REPORTED A NO. 6 REBAR AT THE CORNER.

IN A CERTIFIED SURVEY MAP DATED 3 FEBRUARY 2016, AARON AUSTIN REPORTED A NO. 6 REBAR AT THE CORNER.

IN A SITE MAP DATED 5 MARCH 2018, AARON AUSTIN REPORTED A 3/4" REBAR AT THE CORNER.

AFFIX LAND SURVEYOR SEAL

(I) I, JAY P. ADAMS, P.L.S. - 2879, CERTIFY THAT THE CORNER LOCATION SHOWN ON THIS RECORD WAS DETERMINED BY ME OR UNDER MY DIRECTION AND CONTROL AND THAT THIS U.S. PUBLIC LAND SURVEY MONUMENT RECORD IS CORRECT AND COMPLETE TO THE BEST OF MY KNOWLEDGE AND BELIEF.



SIGNATURE

14 FEBRUARY 2020

DATE

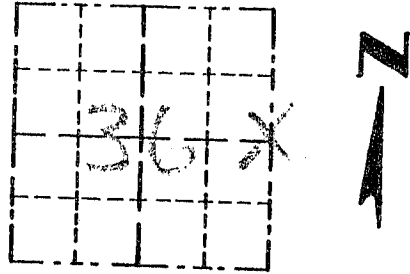


Survey Monument Record

TYPE OF MONUMENT 3/4" X 24" IRON BAR
SET

CORNER NO. 120
 SECTION 36
 TOWN 41N
 RANGE 21W

FIELD BOOK: 97-08
 PAGE (3)



LOCATION
 (Indicated by "X")

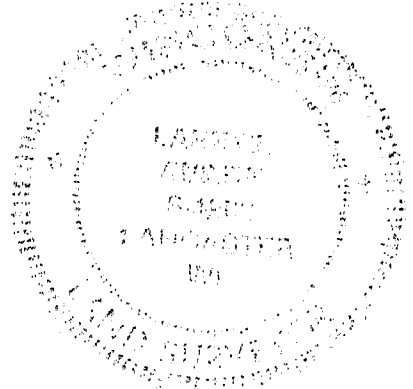
BASIS FOR MONUMENT LOCATION

(Use reverse side if necessary)

Show info such as: History of corner, with reference to Vol. and pg., dates, surveyor; exact description of monument replaced; if location computed, by taped or EDM traverse; landowner, remarks, etc.

SEAL:

CORNER SET IN 1832 BY
 SIBLEY, NO RECORD OF THE CORNER FOUND
 SINCE ORIGINAL SURVEY; CORNER
 WAS SET ONLINE WITH A
 FENCE WEST FOR NORTHING;
 EASTING WAS SET BY EXISTING
 CENTERLINE NORTH/SOUTH, VERIFIED ITS
 LOCATION USING EDM METHODS.



CERTIFIED CORRECT

Randy J. Quitt
 Registered Land Surveyor

DATE: 12-20-97

TIE SKETCH

Show at least three (3) ties and monument

LEGEND

- ⊙ 3/4" X 24" IRON BAR SET
- 1/2" X 15" IRON BAR SET
- XX EXISTING FENCE

