

# GRANT COUNTY U.S. PUBLIC LAND SURVEY MONUMENT RECORD

INSTRUCTIONS: THIS RECORD SHALL SHOW THE LOCATION OF THE CORNER AND SHALL INCLUDE ALL OF THE FOLLOWING ELEMENTS (A THROUGH I).

(A) IDENTIFY THE CORNER AS REFERENCED TO THE U.S. PUBLIC LAND SURVEY SYSTEM

■ = CORNER MONUMENT RESTORED

WITNESSES TO CORNER LOCATION:

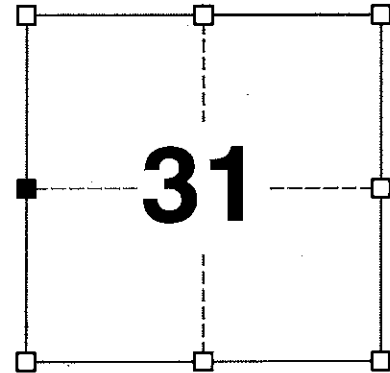
JAY P. ADAMS  
STEVEN A. ALT

GEOGRAPHIC COORDINATES,  
NAD 83 (2011) ADJUSTMENT:

LATITUDE: 42° 46' 37.20471"  
LONGITUDE: 90° 39' 45.36759"

WISCONSIN COORDINATE REFERENCE SYSTEM (WISCRS),  
GRANT COUNTY, NAD 83 (2011) ADJUSTMENT:

NORTHING: 497,803.73  
EASTING: 831,890.94



SECTION 31  
TOWNSHIP 4 NORTH, RANGE 2 WEST  
TOWN OF ELLENBORO

(B) DESCRIBE ANY RECORD EVIDENCE, MONUMENT EVIDENCE, OCCUPATIONAL EVIDENCE, TESTIMONIAL EVIDENCE OR ANY OTHER MATERIAL EVIDENCE YOU CONSIDERED, AND WHETHER THE MONUMENT WAS FOUND OR PLACED.

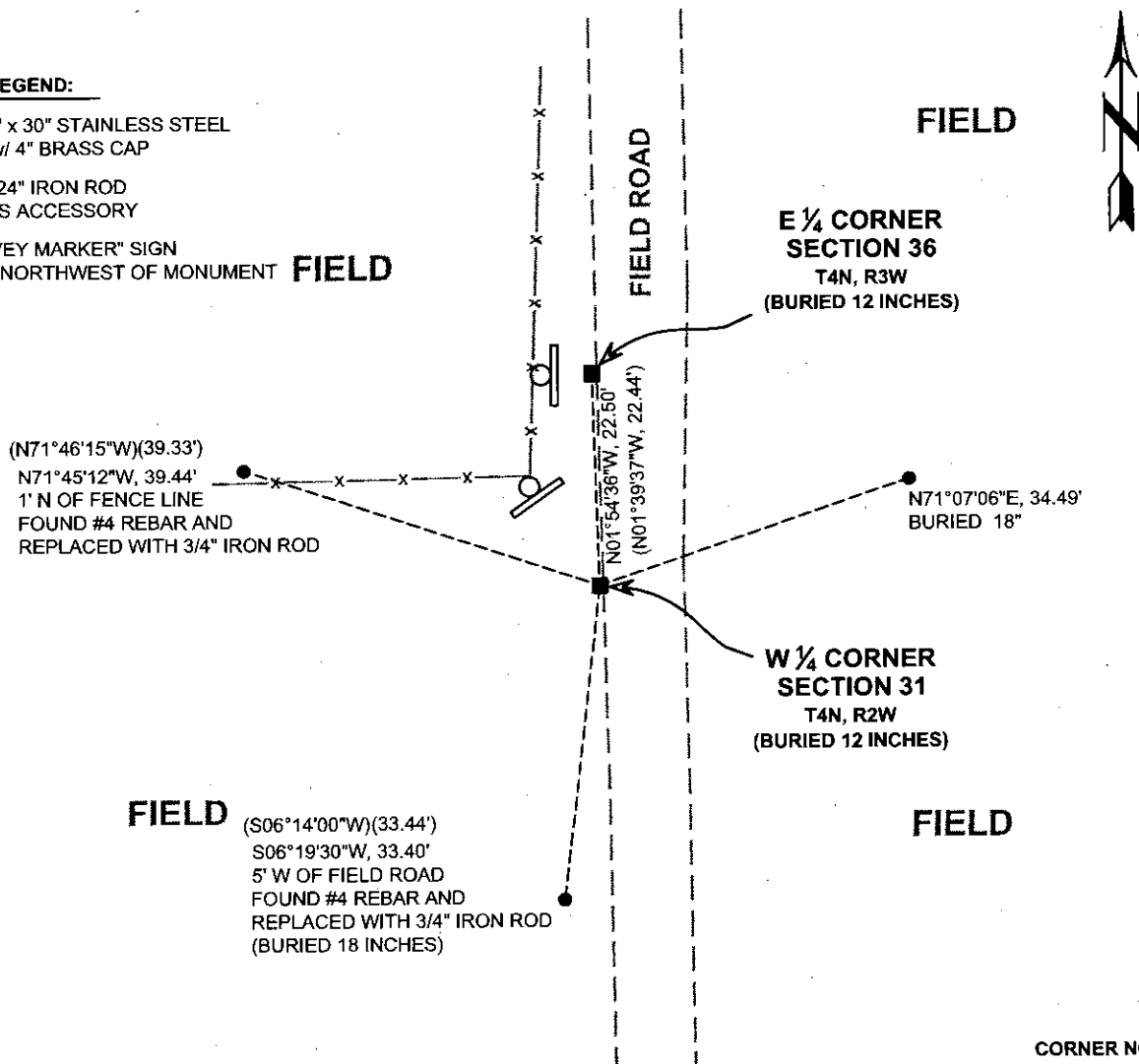
I COULD FIND NO MONUMENTS OR BEARING TREES FROM THE HISTORIC COUNTY SURVEYOR'S SURVEY. I RECOVERED THE #8 x 30" REBAR WITH GRANT COUNTY ALUMINUM CAP REFERENCED BY LARRY AND AARON AUSTIN. THIS LOCATION WAS ACCEPTED AS THE BEST AVAILABLE EVIDENCE OF THE CORNER AND WAS REPLACED WITH A 2" x 30" STAINLESS STEEL PIPE WITH A 4" GRANT COUNTY BRASS CAP AS DEPICTED BELOW.

(C) IN THE PLAN VIEW DRAWING BELOW, PROVIDE REFERENCE TIES TO AT LEAST 4 WITNESS MONUMENTS. WITNESS MONUMENTS SHALL BE MADE OF CONCRETE, NATURAL STONE, IRON, BEARING TREES OR ANY OTHER EQUALLY DURABLE MATERIAL. DEPICT THE RELEVANT MONUMENTS AND REFERENCE TIES WITH SUFFICIENT DETAIL TO ENABLE ACCURATE RELOCATION OF THE CORNER IF THE CORNER MONUMENT IS DISTURBED.

(D)

**LEGEND:**

- SET 2" x 30" STAINLESS STEEL PIPE w/ 4" BRASS CAP
- 3/4" x 24" IRON ROD SET AS ACCESSORY
- ⊕ "SURVEY MARKER" SIGN 13' +/- NORTHWEST OF MONUMENT



(E) DESCRIBE ANY MATERIAL DISCREPANCY BETWEEN THE LOCATION OF THE CORNER AS RESTORED OR REESTABLISHED AND THE LOCATION OF THAT CORNER AS PREVIOUSLY RESTORED OR REESTABLISHED BY DISTANCE AND DIRECTION. SHOW THE DISCREPANCY ON THE PLAN VIEW DRAWING UNDER (D), ABOVE. SHOW THE DISTANCES BETWEEN THE CORNER AS PREVIOUSLY RESTORED OR REESTABLISHED AND (1) THE CORNER AS RESTORED OR REESTABLISHED, AND (2) TO AT LEAST 2 OF THE WITNESS MONUMENTS SHOWN ON THE DRAWING IN (D) ABOVE.

N/A

(F) WAS THE CORNER RESTORED THROUGH ACCEPTANCE OF (1) AN OBLITERATED EVIDENCE LOCATION, OR (2) A FOUND PERPETUATED LOCATION?

(2) A FOUND PERPETUATED LOCATION.

(G&H) WAS THE CORNER REESTABLISHED THROUGH LOST CORNER PROPORTIONATE METHODS? IF SO, SHOW THE METHOD, INCLUDING THE DIRECTIONS AND DISTANCES TO OTHER PUBLIC LAND SURVEY CORNERS USED AS EVIDENCE OR USED FOR PROPORTIONING IN DETERMINING THE CORNER LOCATION.

N/A

CORNER HISTORY

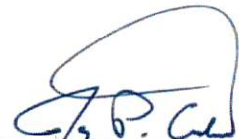
THIS CORNER WAS NOT ESTABLISHED BY THE ORIGINAL GOVERNMENT SURVEY.

IN A SURVEY DATED 6 NOVEMBER 1868, JOEL BARBER SET CORNER 34 LINKS SOUTH OF EAST QUARTER CORNER OF SECTION 36 TOWNSHIP 4 NORTH, RANGE 3 WEST.

IN A PLAT OF SURVEY DATED 29 FEBRUARY 2007 AND A TIE SHEET DATED 1 MAY 2007, LARRY AUSTIN SET A #8 x 30" REBAR WITH GRANT COUNTY ALUMINUM CAP.

IN A PLAT OF SURVEY DATED 7 APRIL 2011, AARON AUSTIN FOUND #8 REBAR WITH CAP.

(I) I, JAY P. ADAMS, P.L.S. - 2879, CERTIFY THAT THE CORNER LOCATION SHOWN ON THIS RECORD WAS DETERMINED BY ME OR UNDER MY DIRECTION AND CONTROL AND THAT THIS U.S. PUBLIC LAND SURVEY MONUMENT RECORD IS CORRECT AND COMPLETE TO THE BEST OF MY KNOWLEDGE AND BELIEF.

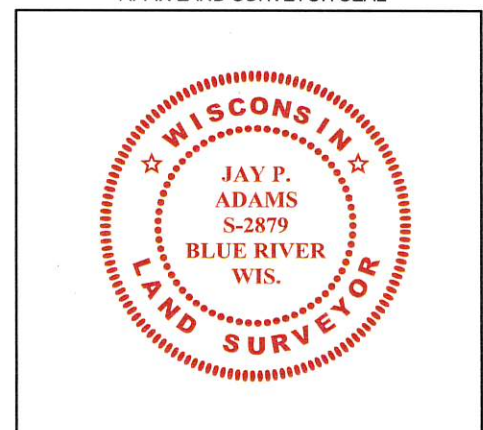


SIGNATURE

21 FEBRUARY 2018

DATE

AFFIX LAND SURVEYOR SEAL

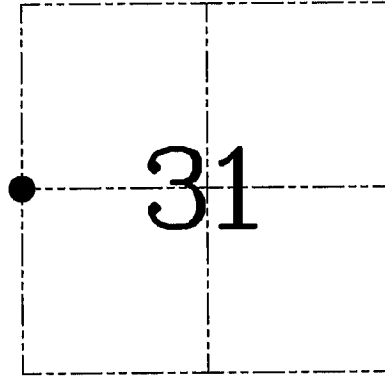
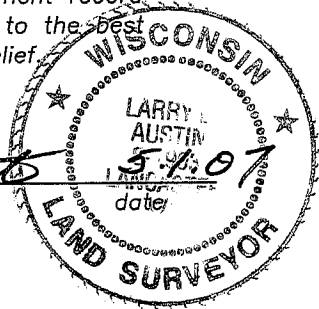


**U.S. PUBLIC LAND SURVEY MONUMENT RECORD – GRANT COUNTY, WI**  
**Section 31, Town 4 North Range 2 West, Town of Ellenboro**

CERTIFICATE

I, Larry L. Austin, do hereby certify that the corner location on this record was determined by me and/or under my direct supervision and that this U.S. public land survey monument record is correct and complete to the best of my knowledge and belief.

*Larry L. Austin*  
 Larry L. Austin, S-1903



● = CORNER LOCATION

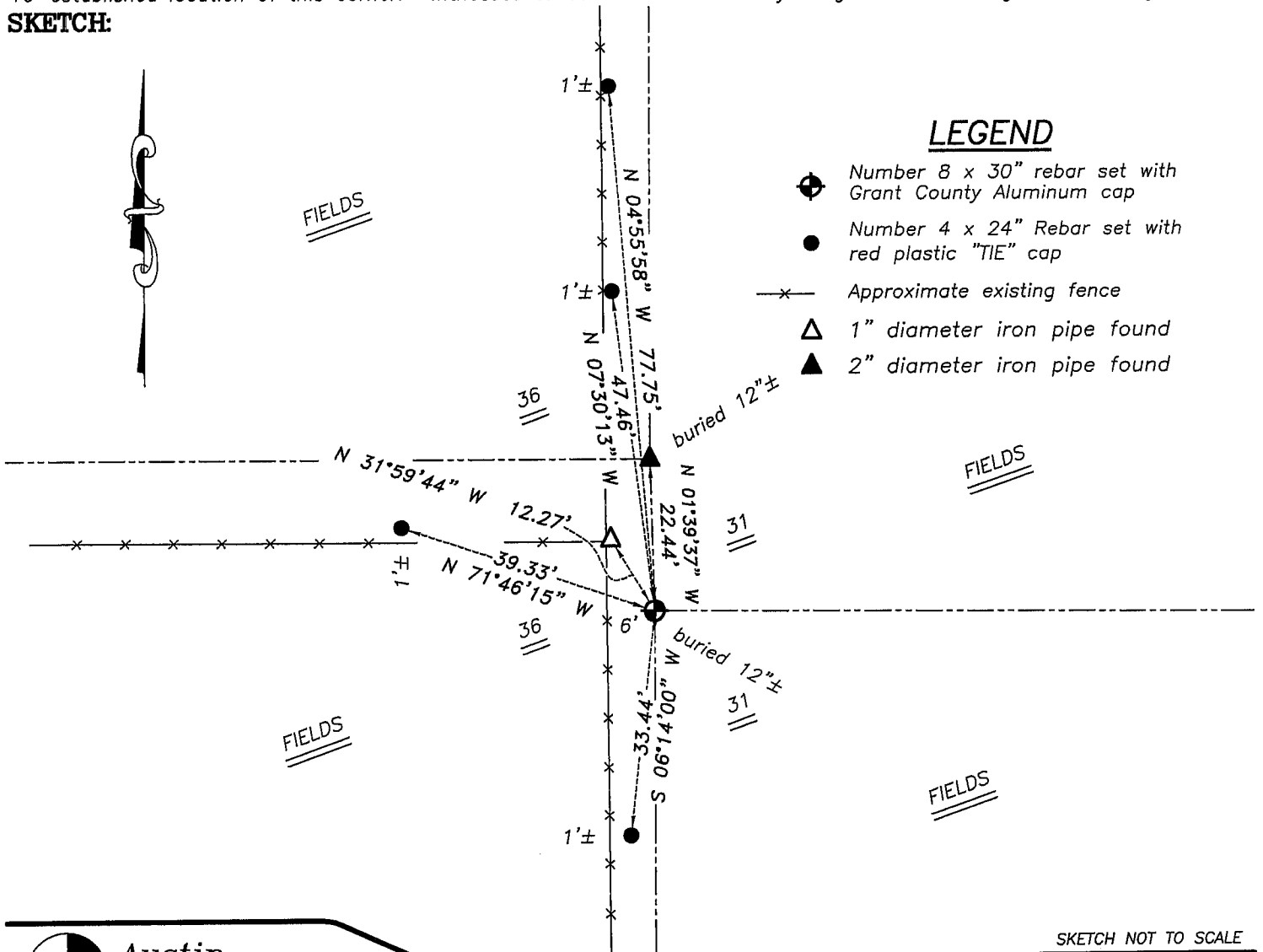
HISTORY OF CORNER ESTABLISHMENT

Corner was never originally set.  
 No other record of the corner was found.

DESCRIPTION OF CORNER EVIDENCE FOUND

I set the corner at the proportioned offset from the existing East 1/4 of Section 36, T4N R3W. Verified this location using EDM & GPS Methods.

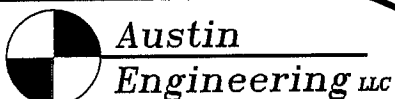
DESCRIPTION OF CORNER AND WITNESS MONUMENTS, references and accessories used to perpetuate the original or re-established location of this corner. Witnesses to corner location Bobby Sedgwick & Brad Digman & Shelby Blindert  
**SKETCH:**



LEGEND

- ⊗ Number 8 x 30" rebar set with Grant County Aluminum cap
- Number 4 x 24" Rebar set with red plastic "TIE" cap
- x— Approximate existing fence
- △ 1" diameter iron pipe found
- ▲ 2" diameter iron pipe found

SKETCH NOT TO SCALE



4211 HWY 81 E, LANCASTER, WI 53813  
 PHONE 608-723-6363 FAX 608-723-6702

JOB NUMBER 07S042  
 FIELDBOOK: TDSR, 2613  
 G:\T4NR2W\T4NR2W  
 H:\TIE\T4NR2W\114

DRAWN BY: SW AUSTIN  
 APPROVED: LL AUSTIN