

REMON
42108

GRANT COUNTY U.S. PUBLIC LAND SURVEY MONUMENT RECORD

INSTRUCTIONS: THIS RECORD SHALL SHOW THE LOCATION OF THE CORNER AND SHALL INCLUDE ALL OF THE FOLLOWING ELEMENTS (A THROUGH I).

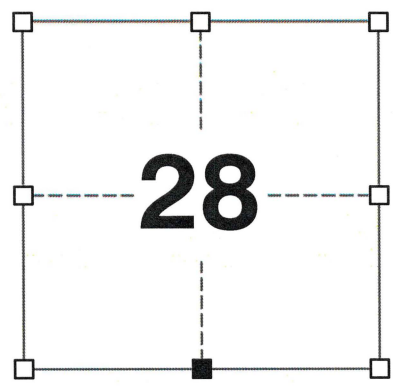
(A) IDENTIFY THE CORNER AS REFERENCED TO THE U.S. PUBLIC LAND SURVEY SYSTEM

■ = CORNER MONUMENT RESTORED

WITNESSES TO CORNER LOCATION:
JAY P. ADAMS
TYLER D. ATKINSON

GEOGRAPHIC COORDINATES,
NAD 83 (2011) ADJUSTMENT:
LATITUDE: 42° 47' 02.35708"
LONGITUDE: 90° 36' 51.03971"

WISCONSIN COORDINATE REFERENCE SYSTEM (WISCRS),
GRANT COUNTY, NAD 83 (2011) ADJUSTMENT:
NORTHING: 500,375.144
EASTING: 844,887.150



SECTION 28
TOWNSHIP 4 NORTH, RANGE 2 WEST
TOWN OF ELLENBORO

(B) DESCRIBE ANY RECORD EVIDENCE, MONUMENT EVIDENCE, OCCUPATIONAL EVIDENCE, TESTIMONIAL EVIDENCE OR ANY OTHER MATERIAL EVIDENCE YOU CONSIDERED, AND WHETHER THE MONUMENT WAS FOUND OR PLACED.

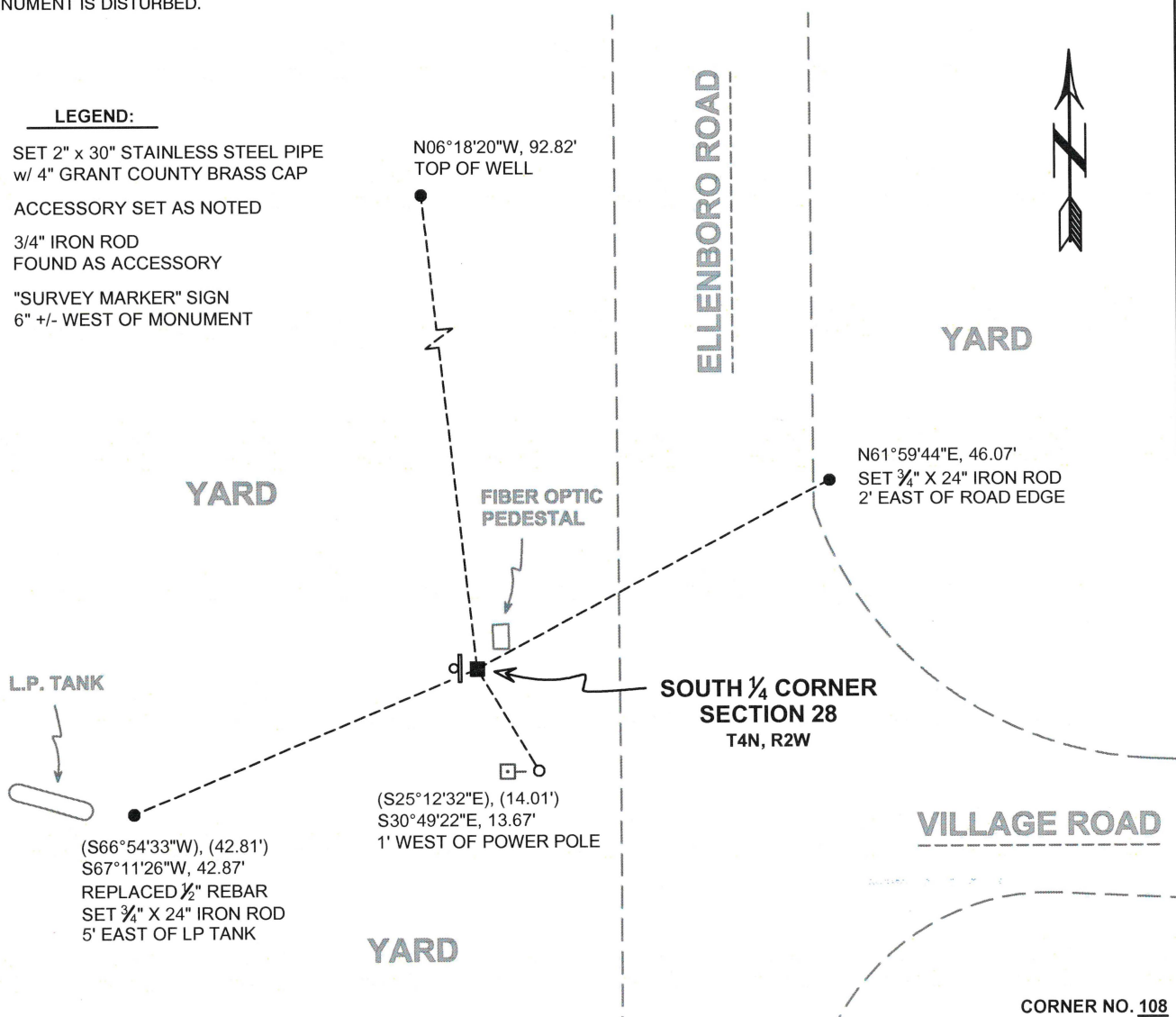
I COULD FIND NO MONUMENTS OR BEARING TREES FROM THE ORIGINAL GOVERNMENT SURVEY OR THE HISTORIC COUNTY SURVEYOR'S SUBSEQUENT RESURVEYS. I RECOVERED THE 1" IRON PIPE REPORTED BY KERST. I ACCEPTED THIS LOCATION AS THE BEST AVAILABLE EVIDENCE OF THE ORIGINAL GOVERNMENT CORNER AND REMONUMENTED IT WITH A 2" x 30" STAINLESS STEEL PIPE WITH A 4" GRANT COUNTY BRASS CAP.

(C) IN THE PLAN VIEW DRAWING BELOW, PROVIDE REFERENCE TIES TO AT LEAST 4 WITNESS MONUMENTS. WITNESS MONUMENTS SHALL BE MADE OF CONCRETE, NATURAL STONE, IRON, BEARING TREES OR ANY OTHER EQUALLY DURABLE MATERIAL. DEPICT THE RELEVANT MONUMENTS AND REFERENCE TIES WITH SUFFICIENT DETAIL TO ENABLE ACCURATE RELOCATION OF THE CORNER IF THE CORNER MONUMENT IS DISTURBED.

(D)

LEGEND:

- SET 2" x 30" STAINLESS STEEL PIPE w/ 4" GRANT COUNTY BRASS CAP
- ACCESSORY SET AS NOTED
- 3/4" IRON ROD FOUND AS ACCESSORY
- ⊞ "SURVEY MARKER" SIGN 6" +/- WEST OF MONUMENT



REMON

(E) DESCRIBE ANY MATERIAL DISCREPANCY BETWEEN THE LOCATION OF THE CORNER AS RESTORED OR REESTABLISHED AND THE LOCATION OF THAT CORNER AS PREVIOUSLY RESTORED OR REESTABLISHED BY DISTANCE AND DIRECTION. SHOW THE DISCREPANCY ON THE PLAN VIEW DRAWING UNDER (D), ABOVE. SHOW THE DISTANCES BETWEEN THE CORNER AS PREVIOUSLY RESTORED OR REESTABLISHED AND (1) THE CORNER AS RESTORED OR REESTABLISHED, AND (2) TO AT LEAST 2 OF THE WITNESS MONUMENTS SHOWN ON THE DRAWING IN (D) ABOVE.

N/A

(F) WAS THE CORNER RESTORED THROUGH ACCEPTANCE OF (1) AN OBLITERATED EVIDENCE LOCATION, OR (2) A FOUND PERPETUATED LOCATION?

(2) A FOUND PERPETUATED LOCATION.

(G&H) WAS THE CORNER REESTABLISHED THROUGH LOST CORNER PROPORTIONATE METHODS? IF SO, SHOW THE METHOD, INCLUDING THE DIRECTIONS AND DISTANCES TO OTHER PUBLIC LAND SURVEY CORNERS USED AS EVIDENCE OR USED FOR PROPORTIONING IN DETERMINING THE CORNER LOCATION.

N/A

CORNER HISTORY

THE ORIGINAL GOVERNMENT CORNER WAS ESTABLISHED BY ROBERT CLARK JR. IN THE FIRST QUARTER OF 1833.

IN SURVEYS DATED 30 JANUARY 1841, JOS. E. FREEMAN VISITED THE CORNER.

IN SURVEYS DATED 6 JULY 1853, JOHN CLARK VISITED THE CORNER.

IN A SURVEY DATED 21 OCTOBER 1856, C.J. OVERTON VISITED THE CORNER.

IN SURVEYS DATED 18 NOVEMBER 1870, JOSEPH ALLEN VISITED THE CORNER AND TOOK A NEW CEDAR BEARING TREE.

IN A SURVEY DATED 27 NOVEMBER 1894, CHARLES SAMPSON NOTED THE CORNER WAS LOCATED BY ALLEN IN 1870.

IN SURVEY PLATS DATED 9 JULY 1981, KENNETH KERST REPORTED FINDING A 1" IRON PIPE AT THE CORNER.

SINCE 9 JULY 1981, THIS CORNER HAS BEEN USED IN NUMEROUS SURVEYS NOTING A 1" IRON PIPE AT THE CORNER.

IN A PLAT OF SURVEY AND SUBSEQUENT TIE SHEET DATED SEPTEMBER 2015, AARON AUSTIN REPORTED FINDING A 1" IRON PIPE AT THE CORNER.

AFFIX LAND SURVEYOR SEAL

(I) I, JAY P. ADAMS, P.L.S. - 2879, CERTIFY THAT THE CORNER LOCATION SHOWN ON THIS RECORD WAS DETERMINED BY ME OR UNDER MY DIRECTION AND CONTROL AND THAT THIS U.S. PUBLIC LAND SURVEY MONUMENT RECORD IS CORRECT AND COMPLETE TO THE BEST OF MY KNOWLEDGE AND BELIEF.

SIGNATURE

14 FEBRUARY 2020

DATE



U.S. PUBLIC LAND SURVEY MONUMENT RECORD - GRANT COUNTY, WI

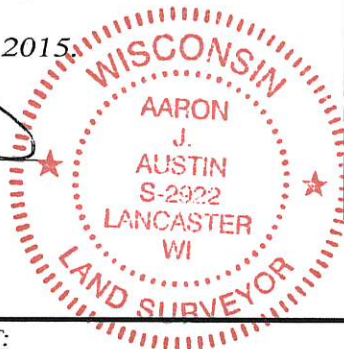
Section 28, Town 4 North Range 2 West, Town of Ellenboro

CERTIFICATE:

I, Aaron J. Austin, Wisconsin Professional Land Surveyor, do hereby certify that the corner location on this record was determined by me and/or under my direct supervision and that this U.S. Public Land Survey Monument Record is correct and complete to the best of my knowledge and belief.

Dated this 28th day of September, 2015.

Aaron J. Austin
 Aaron J. Austin, S-2922



Corner No. 108



HISTORY OF CORNER ESTABLISHMENT:

- 1833-Clark set original corner.
 - 1870-Joseph Allen tied to the corner on a Survey filed in Book C, Page 237.
 - 1981-K.A. Kerst found a 1" Iron pipe in Book H, Page 118.
 - 1995-Larry Austin tied to the corner on a Survey filed in Book W, Page 51.
 - 2004-Larry Austin tied to the corner on C.S.M. No. 1077.
- Several surveys have accepted this corner location.

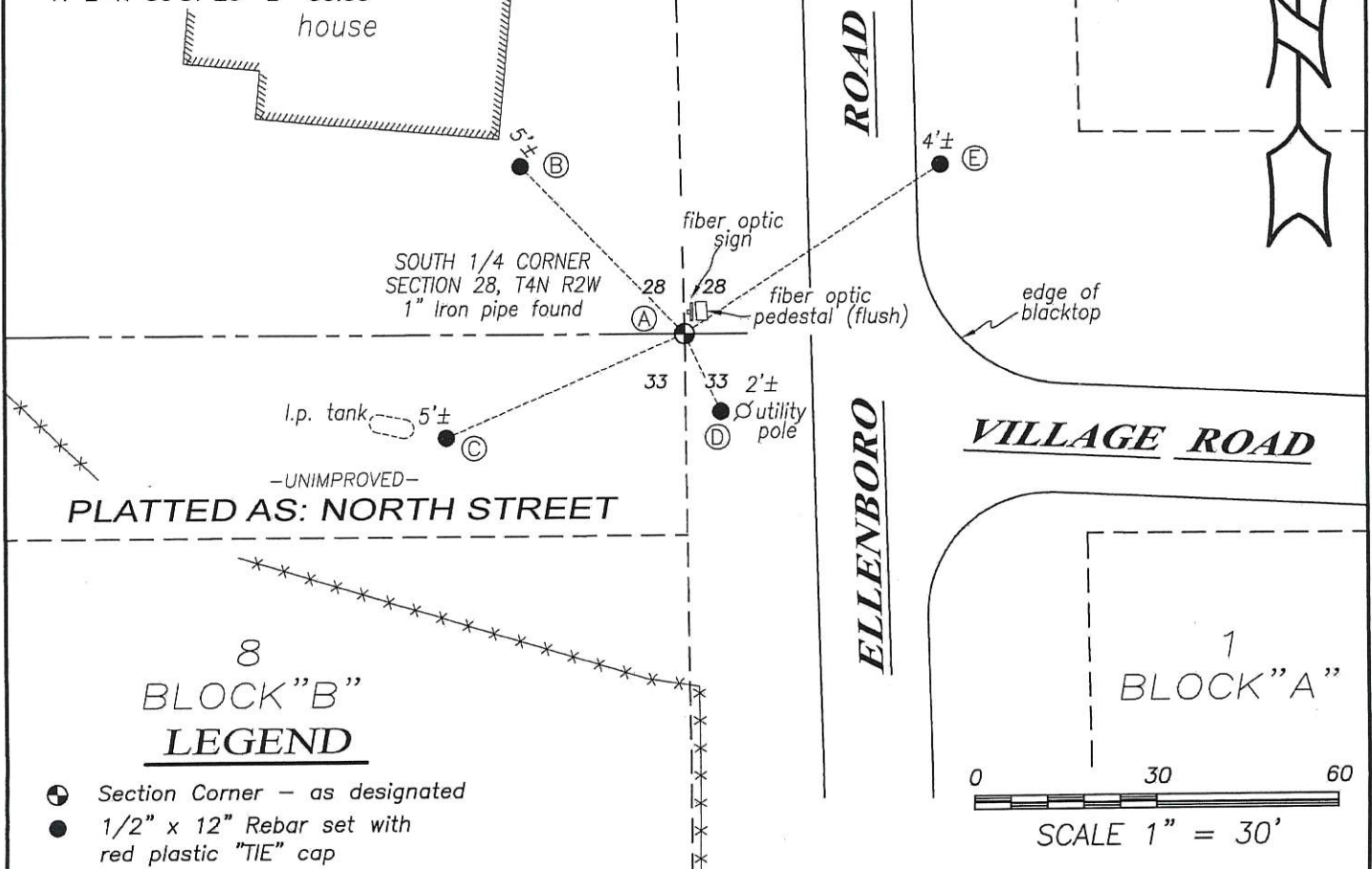
DESCRIPTION OF CORNER EVIDENCE FOUND:

I found a 3/4" rebar in place. I set 4 new witness corners after verification to area corners by E.D.M. and G.P.S. methods.

DESCRIPTION OF CORNER AND WITNESS MONUMENTS, references and accessories used to perpetuate the original or re-established location of this corner. Witnesses to corner location Shane Austin.

SKETCH:

- A-B=N 44°40'10" W 38.45'
- A-C=S 66°54'33" W 42.81'
- A-D=S 25°12'32" E 14.01'
- A-E=N 56°57'26" E 50.53'



- ⊙ Section Corner - as designated
- 1/2" x 12" Rebar set with red plastic "TIE" cap



4211 HWY 81 E, LANCASTER, WI 53813
 PHONE: 608-723-6363 FAX: 608-723-6702

JOB NO: 15s181
 G:\15S142
 H:\TIE\T4NR2W\108

FIELDBOOK: TDSR
 DRAWN BY: AJ AUSTIN
 CREW: SW AUSTIN