

GRANT COUNTY CERTIFIED LAND CORNER

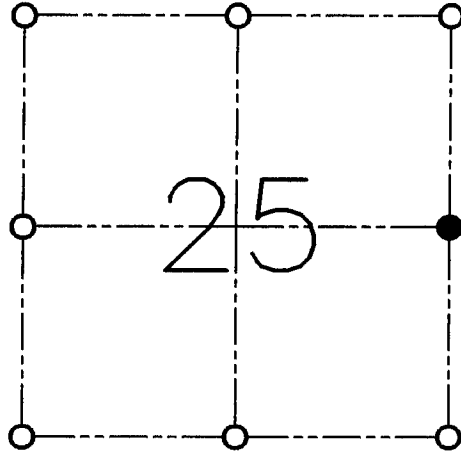
CORNER NO. 100

CERTIFICATE:

I, LARRY L. AUSTIN, DO HEREBY CERTIFY THAT ON SIXTEENTH DAY OF FEBRUARY, 1998, I FOUND NO EVIDENCE OF THE EAST 1/4 CORNER OF SECTION 25, TOWN 4 NORTH, RANGE 2 WEST, OF THE FOURTH PRINCIPAL MERIDIAN, AND I RE-ESTABLISHED SAID CORNER ACCORDING TO THE WISCONSIN STATUTES AS SHOWN AND DESCRIBED HEREON.

DATED THIS TWENTIETH DAY OF MARCH, 1998

Larry L. Austin
LARRY L. AUSTIN S-1903



● = CORNER LOCATION

**EAST 1/4 OF SECTION 25
T 4 N R 2 W
TOWN OF ELLENBORO**

HISTORY OF ORIGINAL CORNER ESTABLISHMENT:

CORNER WAS SET IN 1832 BY SIBLEY.

DESCRIPTION OF CORNER EVIDENCE FOUND:

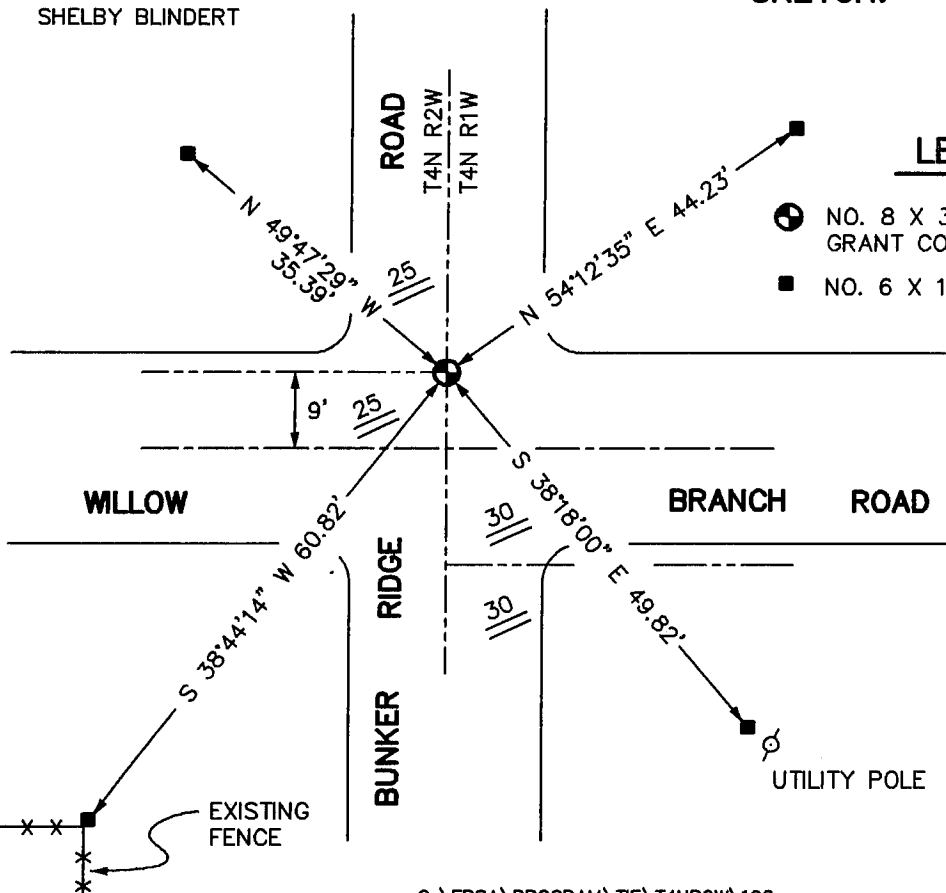
I FOUND NO EVIDENCE OF THIS CORNER. I SET THE CORNER MIDWAY ONLINE BETWEEN THE NORTHEAST AND SOUTHEAST CORNERS. VERIFIED THIS LOCATION USING E.D.M. AND G.P.S. METHODS.

DESCRIPTION OF CORNER AND WITNESS MONUMENTS, REFERENCES AND ACCESSORIES USED TO PERPETUATE THE ORIGINAL OR RE-ESTABLISHED LOCATION OF THIS CORNER:

WITNESS TO THE CORNER LOCATION:

BOBBY SEDGWICK
SHELBY BLINDERT

SKETCH:



LEGEND

- NO. 8 X 30" REBAR SET WITH GRANT COUNTY ALUMINUM CAP
- NO. 6 X 16" REBAR SET

