

RECEIVED MAR 26 1999

GRANT COUNTY CERTIFIED LAND CORNER

CORNER NO. 99

CERTIFICATE:

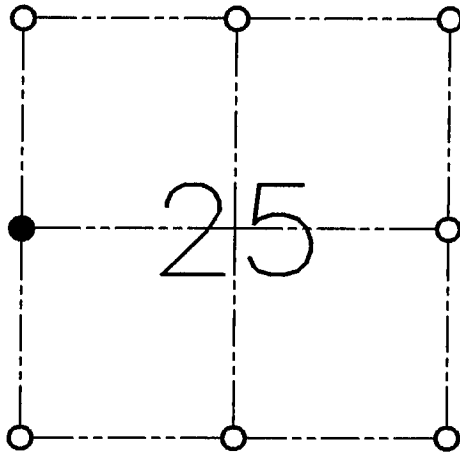
I, LARRY L. AUSTIN, DO HEREBY CERTIFY THAT ON SIXTEENTH DAY OF FEBRUARY, 1998, I FOUND NO EVIDENCE OF THE WEST 1/4 CORNER OF SECTION 25, TOWN 4 NORTH, RANGE 2 WEST, OF THE FOURTH PRINCIPAL MERIDIAN, AND I RE-ESTABLISHED SAID CORNER ACCORDING TO THE WISCONSIN STATUTES AS SHOWN AND DESCRIBED HEREON.

DATED THIS SIXTEENTH DAY OF MARCH, 1998

Larry L. Austin
LARRY L. AUSTIN S-1903



SEAL



● = CORNER LOCATION

WEST 1/4 OF SECTION 25
T 4 N R 2 W
TOWN OF ELLENBORO

HISTORY OF ORIGINAL CORNER ESTABLISHMENT:

CORNER WAS SET IN 1833 BY ROBERT CLARK.

DESCRIPTION OF CORNER EVIDENCE FOUND:

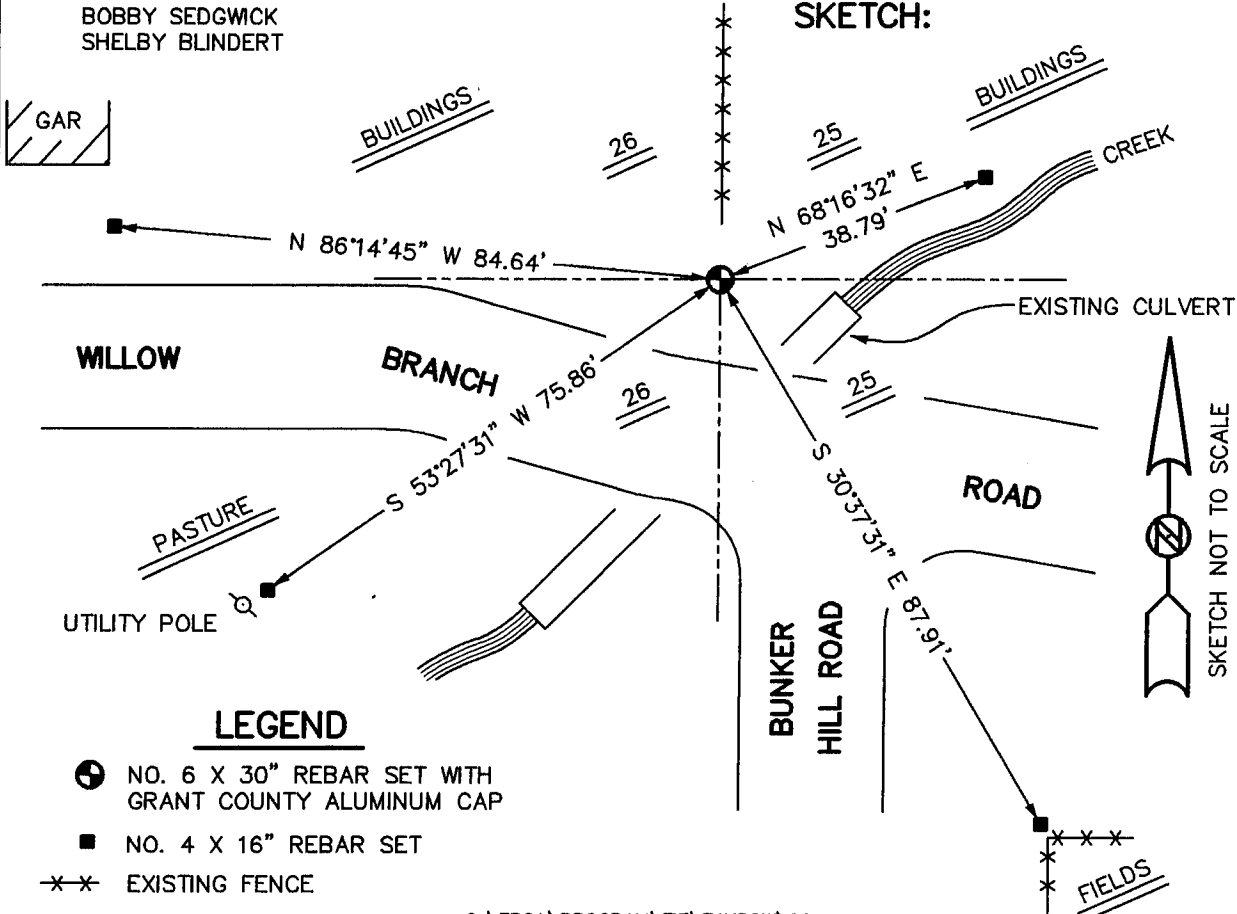
IN 1971 HOMER RALPH SET A P.K. NAIL AT THIS LOCATION. I FOUND THIS LOCATION TO BE INCORRECT. I SET THE CORNER MIDWAY BETWEEN THE NORTHWEST AND SOUTHWEST CORNERS. THIS LOCATION FIT WELL WITH CORNERS IN THE AREA. VERIFIED THIS LOCATION USING E.D.M. AND G.P.S. METHODS.

DESCRIPTION OF CORNER AND WITNESS MONUMENTS, REFERENCES AND ACCESSORIES USED TO PERPETUATE THE ORIGINAL OR RE-ESTABLISHED LOCATION OF THIS CORNER:

WITNESS TO THE CORNER LOCATION:

BOBBY SEDGWICK
SHELBY BLINDERT

SKETCH:



LEGEND

- NO. 6 X 30" REBAR SET WITH GRANT COUNTY ALUMINUM CAP
- NO. 4 X 16" REBAR SET
- *-* EXISTING FENCE