

GRANT COUNTY U.S. PUBLIC LAND SURVEY MONUMENT RECORD

INSTRUCTIONS: THIS RECORD SHALL SHOW THE LOCATION OF THE CORNER AND SHALL INCLUDE ALL OF THE FOLLOWING ELEMENTS (A THROUGH I)

(A) IDENTIFY THE CORNER BY REFERENCE TO THE U.S. PUBLIC LAND SURVEY SYSTEM

■ = CORNER MONUMENT RESTORED

WITNESSES TO CORNER LOCATION:

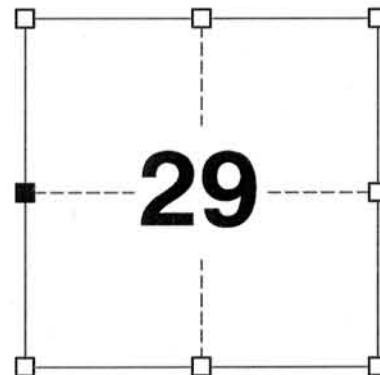
JAY P. ADAMS
JASON A. PELOCK

GEOGRAPHIC COORDINATES,
NAD 83 (2011) ADJUSTMENT:

LATITUDE: 42° 47' 29.2128"
LONGITUDE: 90° 38' 37.5615"

WISCONSIN COUNTY COORDINATE SYSTEM (WCCS), GRANT COUNTY,
NAD 83 (2011) ADJUSTMENT:

NORTHING: 503,078.00
EASTING: 836,938.34



SECTION 29
TOWN 4 NORTH, RANGE 2 WEST
TOWN OF ELLENBORO

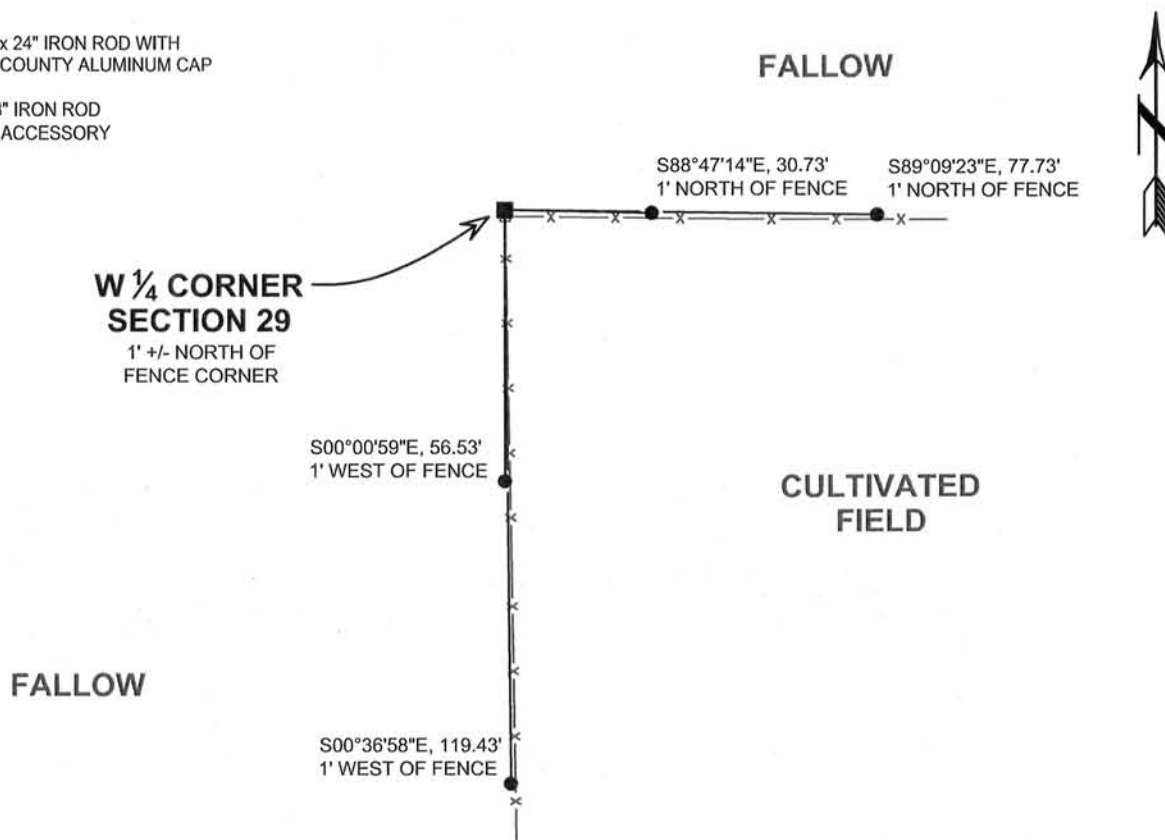
(B) DESCRIBE ANY RECORD EVIDENCE, MONUMENT EVIDENCE, OCCUPATIONAL EVIDENCE, TESTIMONIAL EVIDENCE, OR ANY OTHER MATERIAL EVIDENCE YOU CONSIDERED, AND WHETHER THE MONUMENT WAS FOUND OR PLACED.

I COULD FIND NO MONUMENTS OR BEARING TREES FROM THE ORIGINAL GOVERNMENT SURVEY OR THE HISTORIC COUNTY SURVEYOR'S RESURVEYS. I WAS ALSO UNABLE TO RECOVER THE 1" IRON BAR REPORTED BY AUSTIN POSSIBLY BECAUSE OF FENCE REPLACEMENT. I REMONUMENTED THE CORNER USING AREA SURVEYS BY AUSTIN. I ACCEPTED THIS LOCATION AS THE BEST AVAILABLE EVIDENCE OF THE ORIGINAL GOVERNMENT CORNER AND SET A 3/4" x 24" IRON ROD WITH A GRANT COUNTY ALUMINUM CAP.

(C) IN THE PLAN VIEW DRAWING BELOW, PROVIDE REFERENCE TIES TO AT LEAST 4 WITNESS MONUMENTS, (WITNESS MONUMENTS SHALL BE MADE OF CONCRETE, NATURAL STONE, IRON OR ANY OTHER EQUALLY DURABLE MATERIAL.) DESCRIBE WITNESS MONUMENTS.

(D) SHOW A PLAN VIEW DRAWING DEPICTING THE RELEVANT MONUMENTS AND REFERENCE TIES, WHICH IS SUFFICIENTLY DETAILED TO ENABLE ACCURATE RELOCATION OF THE CORNER MONUMENT IF IT IS DISTURBED.

- SET 3/4" x 24" IRON ROD WITH GRANT COUNTY ALUMINUM CAP
- 3/4" x 18" IRON ROD SET AS ACCESSORY



(E) DESCRIBE ANY MATERIAL DISCREPANCY BETWEEN THE LOCATION OF THE CORNER AS RESTORED OR REESTABLISHED AND THE LOCATION OF THAT CORNER AS PREVIOUSLY RESTORED OR REESTABLISHED BY DISTANCE AND DIRECTION. SHOW THE DISCREPANCY ON THE PLAN VIEW DRAWING UNDER (D), ABOVE. SHOW THE DISTANCES BETWEEN THE CORNER AS PREVIOUSLY RESTORED OR REESTABLISHED AND (1) THE CORNER AS RESTORED OR REESTABLISHED, AND (2) TO AT LEAST 2 OF THE WITNESS MONUMENTS SHOWN ON THE DRAWING IN (D) ABOVE.

N/A

(F) WAS THE CORNER RESTORED THROUGH ACCEPTANCE OF (1) AN OBLITERATED EVIDENCE LOCATION, OR, (2) A FOUND PERPETUATED LOCATION?

(1) AN OBLITERATED EVIDENCE LOCATION

(G&H) WAS THE CORNER REESTABLISHED THROUGH LOST CORNER PROPORTIONATE METHODS? IF SO, SHOW THE METHOD, INCLUDING THE DIRECTIONS AND DISTANCES TO OTHER PUBLIC LAND SURVEY CORNERS USED AS EVIDENCE OR USED FOR PROPORTIONING IN DETERMINING THE CORNER LOCATION.

N/A

CORNER HISTORY

ORIGINAL GOVERNMENT CORNER ESTABLISHED BY ROBERT CLARK IN THE FIRST QUARTER OF 1833.

A NUMBER OF HISTORIC COUNTY SURVEYOR RECORDS REFERENCE RECOVERING THIS CORNER.

MORE RECENTLY, A TIE SHEET DATED 1 NOVEMBER 1995, LARRY AUSTIN DEPICTS A 1" IRON BAR AT A TWO-WAY FENCE CORNER.

AFFIX LAND SURVEYOR SEAL

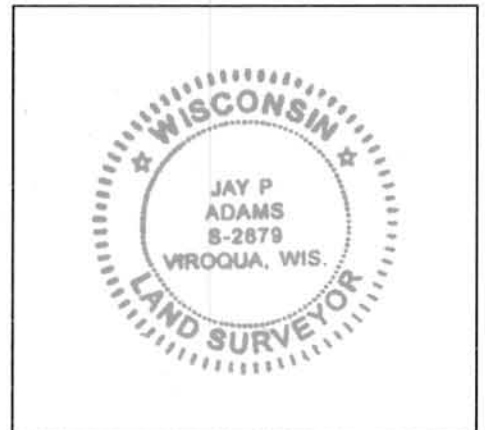
(I) I, JAY P. ADAMS, R.L.S. 2879, CERTIFY THAT THE CORNER LOCATION SHOWN ON THIS RECORD WAS DETERMINED BY ME OR UNDER MY DIRECTION AND CONTROL AND THAT THIS U.S. PUBLIC LAND SURVEY MONUMENT RECORD IS CORRECT AND COMPLETE TO THE BEST OF MY KNOWLEDGE AND BELIEF.



SIGNATURE

11 MARCH 2013

DATE

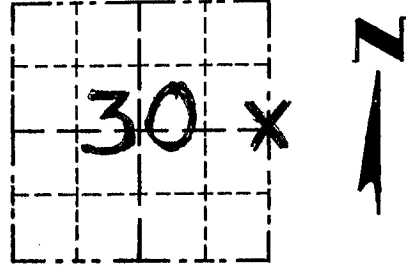


GRANT COUNTY

Survey Monument Record

TYPE OF MONUMENT 1" IRON BAR
 STATE PLANE COORDINATES: N _____
 E _____
 ELEVATION — M.S.L. DATUM: _____
 THETA ANGLE: _____
 FIELD BOOK: 9511
 PAGE _____

CORNER NO. 95
 SECTION 30
 TOWN 4 N
 RANGE 2 W



LOCATION
 (Indicated by "X")

BASIS FOR MONUMENT LOCATION

(Use reverse side if necessary)

Show info such as: History of corner, with reference to Vol. and pg., dates, surveyor; exact description of monument replaced; if location computed, by taped or EDM traverse; landowner, remarks, etc.

SEAL:

ORIGINAL CORNER SET IN
 1833 BY ROBERT CLARK

1" IRON BAR IS AT OCCUPIED
 FENCE CORNER AND VERIFIED
 BY EDM TRAVERSE OF
 THE AREA



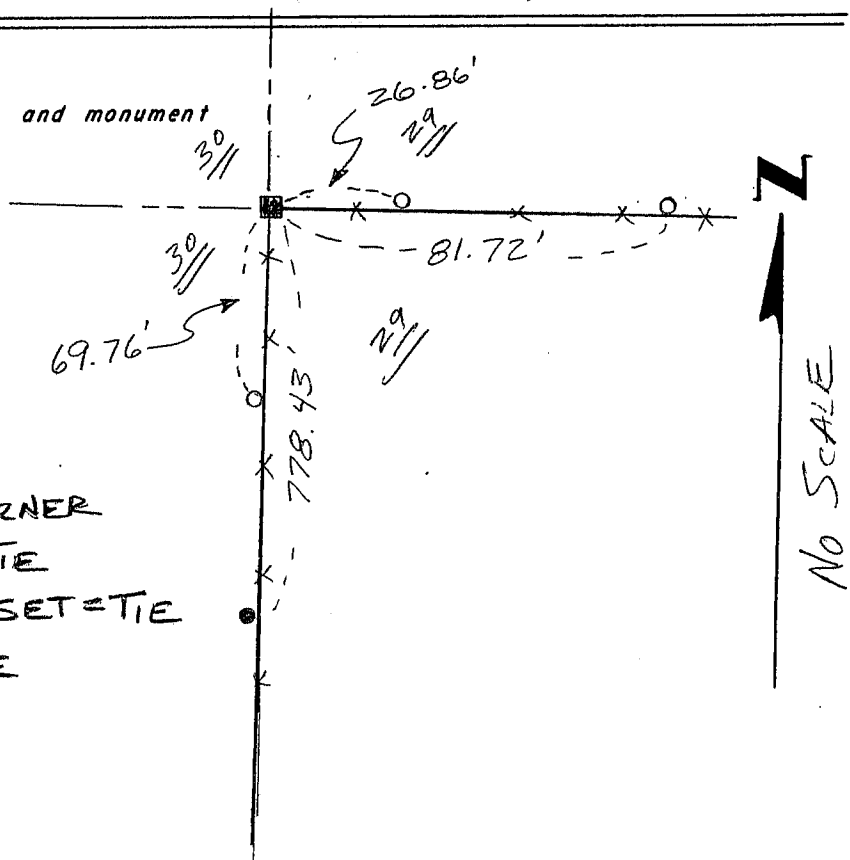
CERTIFIED CORRECT

Larry L. Austin
 Registered Land Surveyor

DATE: 11/1/95

TIE SKETCH

Show at least three (3) ties and monument



LEGEND

- 1" IRON BAR = CORNER
- 3/4" IRON BAR = TIE
- 1" x 12" IRON PIPE SET = TIE
- X --- EXISTING FENCE