

42091

U.S. PUBLIC LAND SURVEY MONUMENT RECORD - GRANT COUNTY, WI

Section 29, Town 4 North Range 2 West, Town of Ellenboro (a)

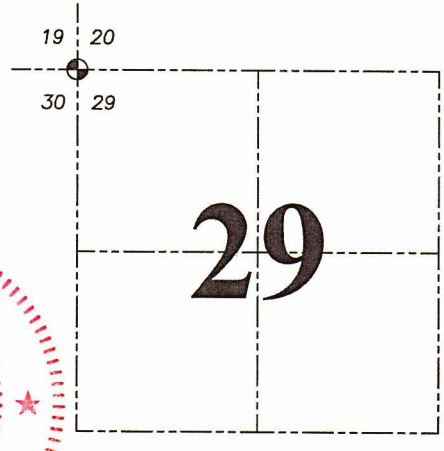
NOTE: This form is intended and designed to fulfill all requirements of the Wisconsin Administrative Code Chapter A-E 7.08, U.S. Public Land Survey Monument Record (3) (a) (b) (c) (d) (e) (f) (g) (h) (i).

CERTIFICATE: (i)

I, Aaron J. Austin, Wisconsin Professional Land Surveyor, do hereby certify that the corner location on this record was determined by me and/or under my direct supervision and that this U.S. Public Land Survey Monument Record is correct and complete to the best of my knowledge and belief.

Dated this 10th day of June, 2021.

Aaron J. Austin
Aaron J. Austin, S-2922



⊕ = CORNER LOCATION

Grant County Coordinates:
NAD 83 (2011)
Northing: 505,732.13
Easting: 836,890.33

HISTORY OF CORNER ESTABLISHMENT:

Original corner was set in 1833 by Robert Clark.
Larry Austin set a 3/4" Rebar and prepared a Survey Monument Record dated 1/25/1997.

DESCRIPTION OF CORNER EVIDENCE FOUND: (b) (f) (g) (h)

I found the 3/4" Rebar and two witness corners Larry set. I set two additional witness corners after I verified the Monument's location with G.P.S. and E.D.M. methods.

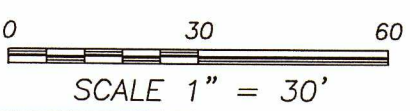
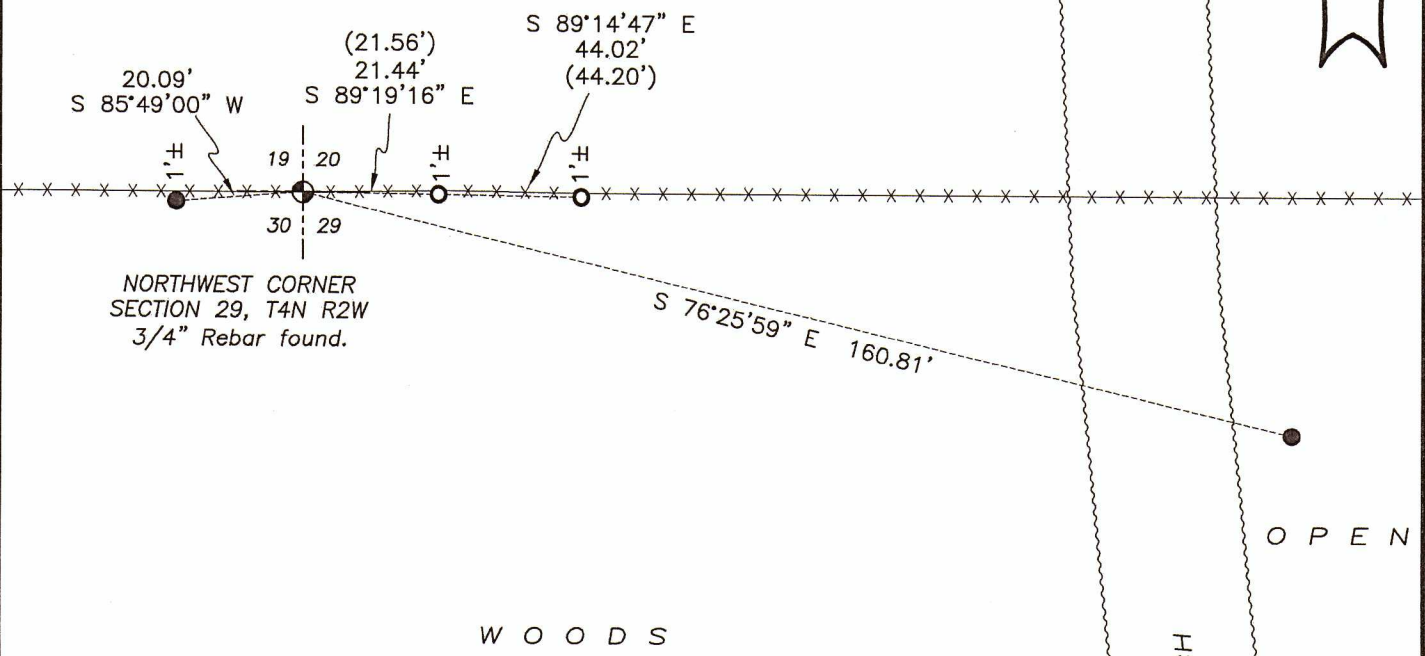
DESCRIPTION OF CORNER AND WITNESS MONUMENTS, references and accessories used to perpetuate the original or re-established location of this corner. (c) (d) (e)

Witnesses to corner location Owen Austin.
Drawn by Owen Austin

SKETCH:

LEGEND

- ⊕ Section Corner—as designated
- 1/2" rebar found
- 5/8" x 18" rebar set
- x-x-x- Existing fence
- () Recorded as



H:\CRD\21S009
H:\TIE\T4NR2W\91

GRANT COUNTY

Survey Monument Record

TYPE OF MONUMENT 3/4" X 24" IRON BAR SET

STATE PLANE COORDINATES: N _____
E _____

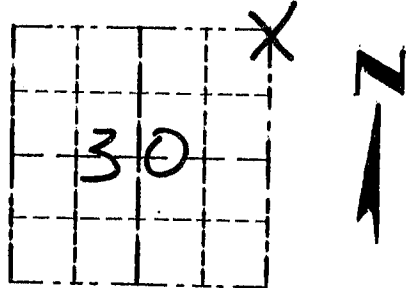
ELEVATION — M.S.L. DATUM: _____

THETA ANGLE: _____

FIELD BOOK: 96-14

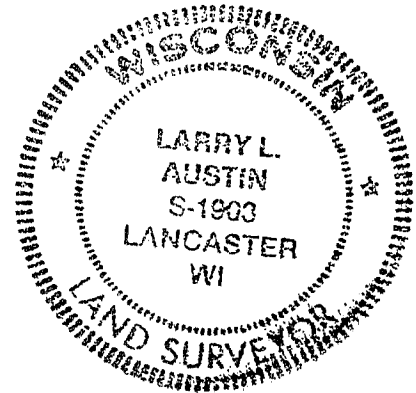
PAGE (26)

CORNER NO. 91
SECTION 30
TOWN 4N
RANGE 2W



LOCATION
(Indicated by "X")

SEAL:



CORNER SET IN 1833
BY ROBERT CLARK.
IN 1996 DAVID BURBACH
SET A 3/8" X 12" SPIKE
AT A OCCUPIED CHANGE IN
E-W FENCE. I ACCEPTED
HIS LOCATION AFTER A
PHONE CONVERSATION I
HAD WITH HIM. VERIFIED
ITS LOCATION USING EDM
METHODS

CERTIFIED CORRECT

Larry L. Austin
Registered Land Surveyor

DATE: 1-25-97

TIE SKETCH

Show at least three (3) ties and monument

LEGEND

⊕ 3/4" X 24" IRON BAR SET

○ 1/2" X 15" IRON BAR SET

--- EXISTING FENCE Woods

