

Remon
42088

GRANT COUNTY U.S. PUBLIC LAND SURVEY MONUMENT RECORD

INSTRUCTIONS: THIS RECORD SHALL SHOW THE LOCATION OF THE CORNER AND SHALL INCLUDE ALL OF THE FOLLOWING ELEMENTS (A THROUGH I).

- (A) IDENTIFY THE CORNER AS REFERENCED TO THE U.S. PUBLIC LAND SURVEY SYSTEM

■ = CORNER MONUMENT RESTORED

WITNESSES TO CORNER LOCATION:

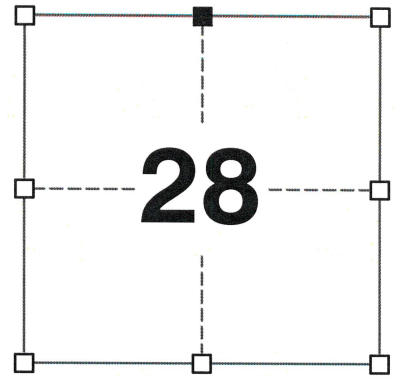
JAMIE L. BRANDT
STEVE A. ALT

GEOGRAPHIC COORDINATES,
NAD 83 (2011) ADJUSTMENT:

LATITUDE: 42° 47' 54.52165"
LONGITUDE: 90° 36' 52.46419"

WISCONSIN COORDINATE REFERENCE SYSTEM (WISCRS),
GRANT COUNTY, NAD 83 (2011) ADJUSTMENT:

NORTHING: 505,656.230
EASTING: 844,769.310



SECTION 28
TOWNSHIP 4 NORTH, RANGE 2 WEST
TOWN OF ELLENBORO

- (B) DESCRIBE ANY RECORD EVIDENCE, MONUMENT EVIDENCE, OCCUPATIONAL EVIDENCE, TESTIMONIAL EVIDENCE OR ANY OTHER MATERIAL EVIDENCE YOU CONSIDERED, AND WHETHER THE MONUMENT WAS FOUND OR PLACED.

I COULD FIND NO MONUMENTS OR BEARING TREES FROM THE ORIGINAL GOVERNMENT SURVEY OR THE HISTORIC COUNTY SURVEYOR'S SUBSEQUENT RESURVEYS. I RECOVERED THE 3/4" X 24" IRON BAR SET BY LARRY AUSTIN. I ACCEPTED THIS LOCATION AS THE BEST AVAILABLE EVIDENCE OF THE ORIGINAL GOVERNMENT CORNER AND REMONUMENTED IT WITH A 2" X 30" STAINLESS STEEL PIPE WITH A 4" GRANT COUNTY BRASS CAP.

- (C) IN THE PLAN VIEW DRAWING BELOW, PROVIDE REFERENCE TIES TO AT LEAST 4 WITNESS MONUMENTS. WITNESS MONUMENTS SHALL BE MADE OF CONCRETE, NATURAL STONE, IRON, BEARING TREES OR ANY OTHER EQUALLY DURABLE MATERIAL. DEPICT THE RELEVANT MONUMENTS AND REFERENCE TIES WITH SUFFICIENT DETAIL TO ENABLE ACCURATE RELOCATION OF THE CORNER IF THE CORNER MONUMENT IS DISTURBED.

- (D)

LEGEND:

- SET 2" x 30" STAINLESS STEEL PIPE w/ 4" GRANT COUNTY BRASS CAP
- 3/4" x 24" IRON ROD SET AS ACCESSORY
- ⊠ "SURVEY MARKER" SIGN 2' +/- EAST OF MONUMENT

FIELD



N10°48'44"W, 44.03'
6' SOUTH OF TELEPHONE
PEDESTAL

N47°23'20"E, 57.68'
3' NORTHEAST OF CULVERT END

BUCKWHEAT RIDGE ROAD

N64°45'40"W, 35.55'
4' SOUTH OF ROAD EDGE

**NORTH 1/4 CORNER
SECTION 28
T4N, R2W**

WOODED

FIELD

S03°21'09"E, 45.83'
5' EAST OF FIELD EDGE

FIELD EDGE

CORNER NO. 88

42088

(E) DESCRIBE ANY MATERIAL DISCREPANCY BETWEEN THE LOCATION OF THE CORNER AS RESTORED OR REESTABLISHED AND THE LOCATION OF THAT CORNER AS PREVIOUSLY RESTORED OR REESTABLISHED BY DISTANCE AND DIRECTION. SHOW THE DISCREPANCY ON THE PLAN VIEW DRAWING UNDER (D), ABOVE. SHOW THE DISTANCES BETWEEN THE CORNER AS PREVIOUSLY RESTORED OR REESTABLISHED AND (1) THE CORNER AS RESTORED OR REESTABLISHED, AND (2) TO AT LEAST 2 OF THE WITNESS MONUMENTS SHOWN ON THE DRAWING IN (D) ABOVE.

N/A

(F) WAS THE CORNER RESTORED THROUGH ACCEPTANCE OF (1) AN OBLITERATED EVIDENCE LOCATION, OR (2) A FOUND PERPETUATED LOCATION?

(2) A FOUND PERPETUATED LOCATION.

(G&H) WAS THE CORNER REESTABLISHED THROUGH LOST CORNER PROPORTIONATE METHODS? IF SO, SHOW THE METHOD, INCLUDING THE DIRECTIONS AND DISTANCES TO OTHER PUBLIC LAND SURVEY CORNERS USED AS EVIDENCE OR USED FOR PROPORTIONING IN DETERMINING THE CORNER LOCATION.

N/A

CORNER HISTORY

THE ORIGINAL GOVERNMENT CORNER WAS ESTABLISHED BY ROBERT CLARK JR. IN THE FIRST QUARTER OF 1833.

IN A SURVEY DATED 4 JUNE 1847, GEORGE STUNTZ SET A CEDAR POST AT THE CORNER AND MARKED IT WITH "1/4 S."

IN A SURVEY DATED 6 JULY 1853, JOHN CLARK VISITED THE CORNER.

IN A SURVEY DATED 21 OCTOBER 1856, OVERTON VISITED THE CORNER.

IN A PLAT OF SURVEY DATED 13 MAY 1991, LARRY AUSTIN NOTED A 1-1/2" IRON PIPE AT THE CORNER.

IN A PLAT OF SURVEY LAST REVISED 8 JUNE 1994, LARRY AUSTIN NOTED A 1" REBAR AT THE CORNER.

IN A SURVEY PLAT LAST REVISED 5 OCTOBER 1994, LARRY AUSTIN FOUND A 3/4" X 30" IRON BAR AT THE CORNER.

IN A SURVEY PLAT DATED 28 JULY 1995, LARRY AUSTIN NOTED A 1" IRON REBAR AT THE CORNER.

IN A TIE SHEET DATED 20 AUGUST 1995, LARRY AUSTIN SET A 3/4" X 24" IRON BAR AT THE CORNER.

IN A PLAT OF SURVEY LAST REVISED 16 JULY 1998, LARRY AUSTIN FOUND A NO. 6 REBAR AT THE CORNER.

IN A UTILITY EASEMENT DATED 26 JUNE 1999, LARRY AUSTIN FOUND A 1" REBAR AT THE CORNER.

SINCE 20 AUGUST 1995, THIS CORNER HAS BEEN USED IN NUMEROUS SURVEYS NOTING A NO. 6 REBAR AT THE CORNER.

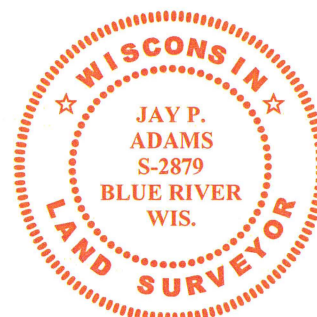
(I) I, JAY P. ADAMS, P.L.S. - 2879, CERTIFY THAT THE CORNER LOCATION SHOWN ON THIS RECORD WAS DETERMINED BY ME OR UNDER MY DIRECTION AND CONTROL AND THAT THIS U.S. PUBLIC LAND SURVEY MONUMENT RECORD IS CORRECT AND COMPLETE TO THE BEST OF MY KNOWLEDGE AND BELIEF.

SIGNATURE

13 FEBRUARY 2020

DATE

AFFIX LAND SURVEYOR SEAL



U.S. PUBLIC LAND SURVEY MONUMENT RECORD - GRANT COUNTY, WI

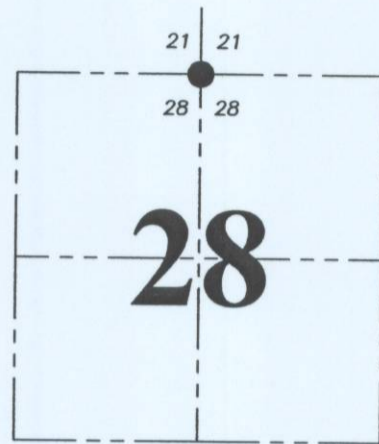
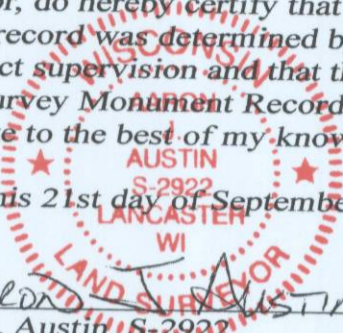
Section 28, Town 4 North Range 2 West, Town of Ellenboro

CERTIFICATE:

I, Aaron J. Austin, Wisconsin Professional Land Surveyor, do hereby certify that the corner location on this record was determined by me and/or under my direct supervision and that this U.S. Public Land Survey Monument Record is correct and complete to the best of my knowledge and belief.

Dated this 21st day of September, 2015.

Aaron J. Austin
 Aaron J. Austin, S-2922



● = CORNER LOCATION

HISTORY OF CORNER ESTABLISHMENT:

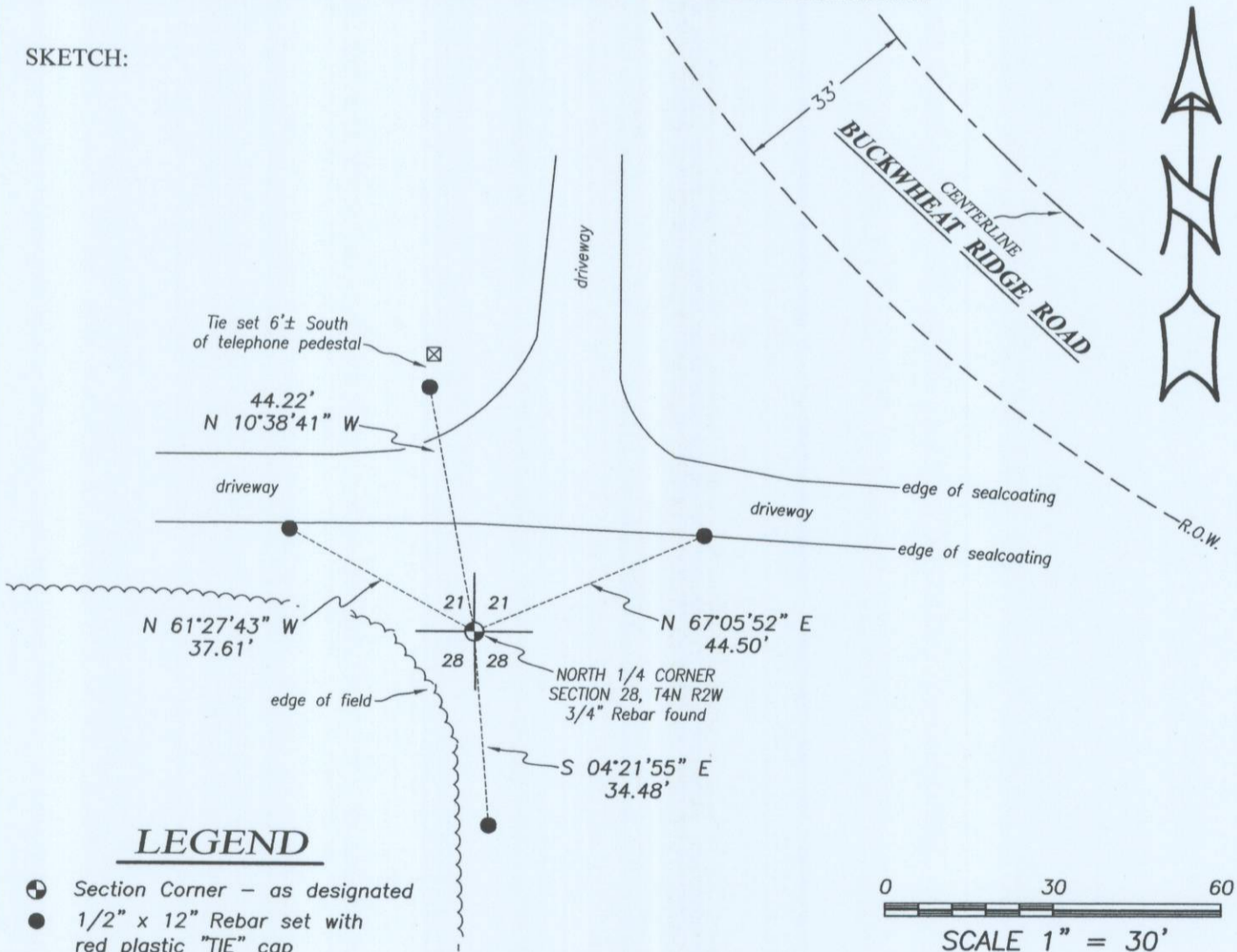
1832-Clark set original corner.
 1995-Larry Austin reset the corner and prepared a Grant County Survey Monument Record.
 Several surveys have accepted this corner location.

DESCRIPTION OF CORNER EVIDENCE FOUND:

I found a 3/4" rebar in place. I set 4 new witness corners after verification to area corners by E.D.M. and G.P.S. methods.

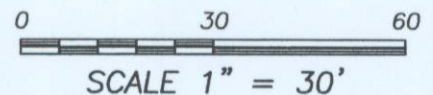
DESCRIPTION OF CORNER AND WITNESS MONUMENTS, references and accessories used to perpetuate the original or re-established location of this corner. Witnesses to corner location Shane Austin.

SKETCH:



LEGEND

- ⊕ Section Corner - as designated
- 1/2" x 12" Rebar set with red plastic "TIE" cap



Austin Engineering LLC
 austinengineeringllc.com

4211 HWY 81 E, LANCASTER, WI 53813
 PHONE: 608-723-6363 FAX: 608-723-6702

JOB NO: 15S142
 G:\15S142
 H:\TIE\T4NR2W\88

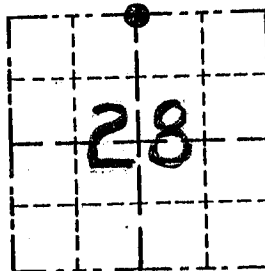
FIELDBOOK: TDSR
 DRAWN BY: AJ AUSTIN
 CREW: SW AUSTIN

GRANT COUNTY

Survey Monument Record

TYPE OF MONUMENT 3/4" x 24" IRON BAR
 STATE PLANE COORDINATES: N _____
 E _____
 ELEVATION — M.S.L. DATUM: _____
 THETA ANGLE: _____
 FIELD BOOK: _____
 PAGE _____

CORNER NO. 88
 SECTION 28
 TOWN 4 N
 RANGE 2 W
N 1/4 COR.



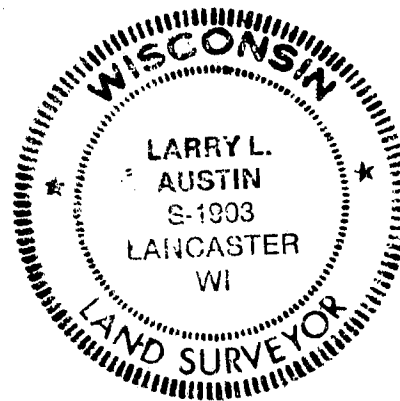
LOCATION
 (Indicated by "●")

BASIS FOR MONUMENT LOCATION

(Use reverse side if necessary)

Show info such as: History of corner, with reference to Vol. and pg., dates, surveyor; exact description of monument replaced; if location computed, by taped or EDM traverse; landowner, remarks, etc.

SEAL:



CORNER WAS ORIGINALLY SET IN 1833 BY CLARK; NO RECORD FOUND OF THE CORNER SINCE THE ORIGINAL SURVEY. I PROPORTIONED THE CORNER E-W; THIS LOCATION FITS OCCUPATION PRETTY GOOD. VERIFIED THIS LOCATION BY MEASUREMENTS TO OTHER CORNERS IN THE AREA.

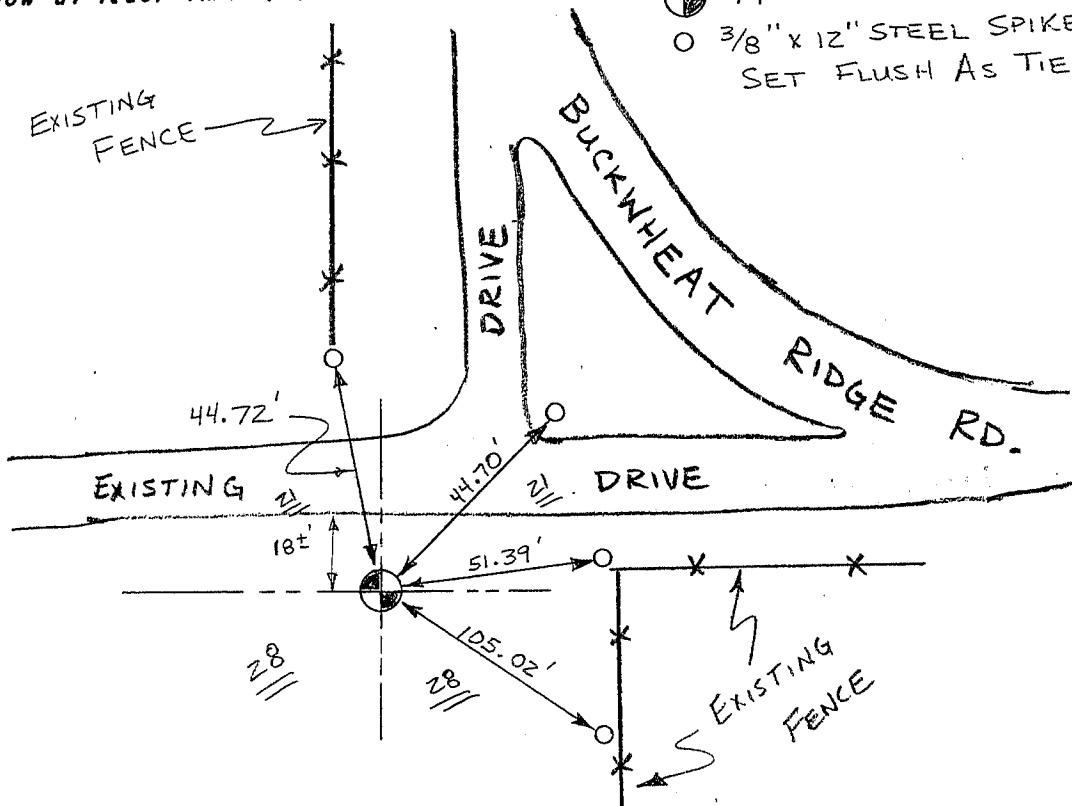
CERTIFIED CORRECT

Larry L. Austin
 Registered Land Surveyor

DATE: 8/20/95

TIE SKETCH

Show at least three (3) ties and monument



LEGEND

- 3/4" x 24" IRON BAR SET = CORNER
- 3/8" x 12" STEEL SPIKE SET FLUSH AS TIES



NO SCALE