

# U.S. PUBLIC LAND SURVEY MONUMENT RECORD - GRANT COUNTY, WI

Section 22, Town 4 North Range 2 West, Town of Ellenboro (a)

NOTE: This form is intended and designed to fulfill all requirements of the Wisconsin Administrative Code Chapter A-E 7.08, U.S. Public Land Survey Monument Record (3) (a) (b) (c) (d) (e) (f) (g) (h) (i).

CERTIFICATE: (i)

I, Aaron J. Austin, Wisconsin Professional Land Surveyor, do hereby certify that the corner location on this record was determined by me and/or under my direct supervision and that this U.S. Public Land Survey Monument Record is correct and complete to the best of my knowledge and belief.

Dated this 22th day of April, 2019.

*Aaron J. Austin*

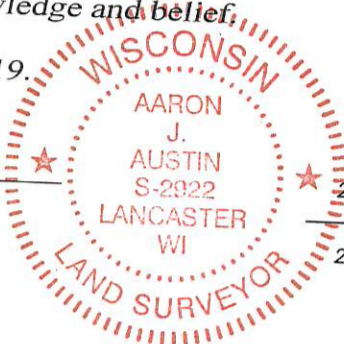
Aaron J. Austin, S-2922

Grant County Coordinates:

NAD 83 (2011)

Northing: 505,660.62

Easting: 847,371.94



21 22  
28 27

⊕ = CORNER LOCATION

### HISTORY OF CORNER ESTABLISHMENT:

Original corner was set in 1833 by Robert Clark.

Larry Austin found a 2" iron pipe on a Survey dated 5-13-1991 filed in Book P, Page 102.

Several other surveys have accepted this 2" Iron pipe as the corner.

### DESCRIPTION OF CORNER EVIDENCE FOUND: (b) (f) (g) (h)

I found a 2" iron pipe and set four new witness corners after I verified the monument's location with G.P.S. and E.D.M. methods.

### DESCRIPTION OF CORNER AND WITNESS MONUMENTS:

original or re-established location of this corner. (c) (d) (e) references and accessories used to perpetuate the

Witnesses to corner location Shane Austin, Owen Austin.

Drawn by: Owen Austin

SKETCH:

## LEGEND

- ⊕ Section Corner—as designated
- 3/4" x 18" rebar set
- x-x-x- Existing fence

