

**U.S. PUBLIC LAND SURVEY MONUMENT RECORD**

(As Required By s. A-E 7.08, WI Adm. Code)

History of original corner establishment and subsequent restorations and description of any record, monument, occupational, testimonial or other evidence considered:

HISTORY IS THE ORIG GOUT SURVEY, NO MONUMENT FOUND. OCCUPATIONAL MONUMENT IS 4 WAY FENCE INTERSECTION. MONUMENT WAS PLACED AT FENCE INTERSECTION AFTER EDM & GPS TRAVERSE OF SECTION 14 FOR EVIDENCE

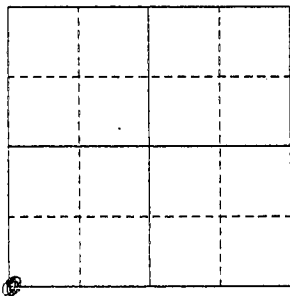
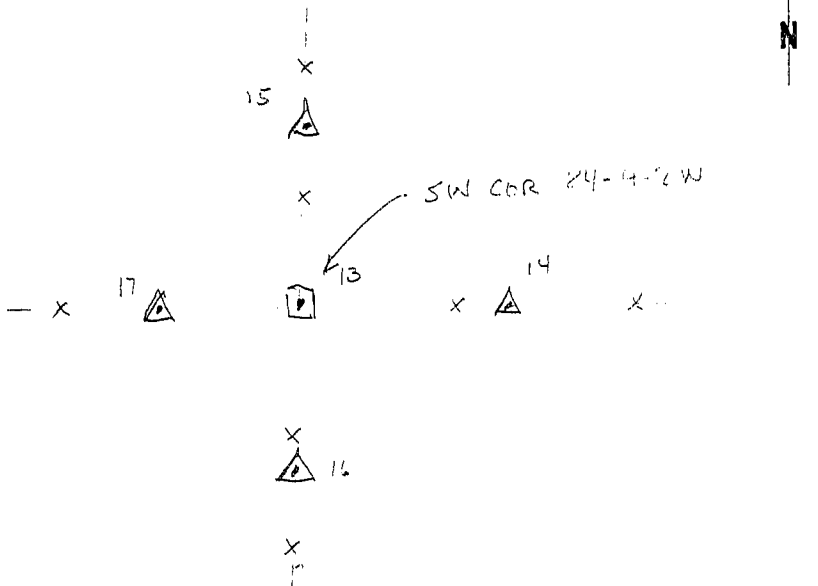
Corner was: (Check All That Apply)

- Restored through acceptance of an obliterated evidence location
- Restored through acceptance of a found perpetuated location
- Considered a lost corner and reestablished through lost corner proportionate methods (include a plan view drawing showing distances and directions to other Public Land Survey Corners used for proportioning and determining the corner location)
- Restored or reestablished in a location that differs from a previous restoration or reestablishment (include a plan view drawing and indicate what was set and /or found)

Describe the monument and accessories used to perpetuate the location of this corner. (Include a plan view drawing and indicate what was set and/or found)

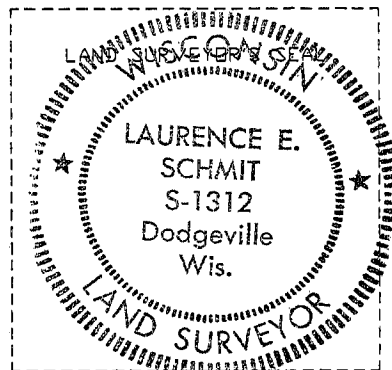
13-14	N 82° 09' 33" E	14.79'
13-15	N 1° 47' 15" E	23.87'
13-16	S 3° 50' 18" E	20.02'
13-17	S 86° 27' 18" W	30.53'

The SW  
corner of Section 24  
T. 2 N., R. 3 W E.,  
GRANT County, Wisconsin  
Job ID: 2000S-137  
Book # 2000-3 p. 69



● = Location of Corner

- LEGEND
- ◻ 7/8" x 24" REBAR WITH GRANT COUNTY ALUM CAP SET
  - △ SET 1/2" IRON PIPE TIES
  - x- FENCE



I, LAURENCE E. SCHMIT  
Type or print name) certify that the corner location shown on this record was determined by me or under my direction and control and that this U.S. Public Land Survey Monument Record is correct and complete to the best of my knowledge and belief.

Laurence E. Schmit 8-2-2000  
Signature Date

Index No. \_\_\_\_\_